

MATERIAL	DESCRIPTION
1731240003	NO COVER
1731240004	WITH COVER

**SECTION Z-Z**

Dimensions: 0.55 +0.30/-0.18, 1.43 +0.30/-0.18, 4.50, 3.94, 29.00 REF, 23.20, 55.04 REF, 45.31 REF, 21.31 REF, 27.31 REF, 23.30 ±0.13.

**DETAIL B SCALE 10:1**

DATE CODE, dddy, 0.80 TYP, 16.00, 32.50 REF, 0.41 +0.24/-0.16.

**DETAIL 2 SCALE 8:1**

GROUND, SIGNAL, GROUND, 18.20 ±0.05 AT BASE OF CARD SLOT, D1, C1, B1, A1, 4.00, 1.30, 24.00, Ø2.08 TYP.

**NOTES:**

- MATERIALS:**  
CONNECTOR HOUSING: HIGH TEMPERATURE THERMOPLASTIC GLASS-FILLED, UL 94V-O  
EMI HOUSING: NICKEL PLATED DIE CAST ALLOY  
COVER: STAINLESS STEEL  
EMI CLIPS: NICKEL PLATED PHOS BRONZE  
TERMINALS: COPPER ALLOY
- PLATING:**  
CONTACT AREA: 0.76µm MIN. GOLD OVER 2.54µm MIN. NICKEL  
TAIL AREA: 0.76µm - 1.52µm TIN OVER 1.27µm MIN NICKEL
- THIS CONNECTOR IS DESIGNED TO MATE WITH MOLEX CABLE SERIES INDICATED IN THE MOLEX PRODUCT SPEC. PS-173124-0001.
- REFER TO ROUTING GUIDE AS-173124-0002 FOR PCB TRACE INFORMATION.
- PACKAGING SPECIFICATION: TRAY PACK PER PK-170501-0001.
- REFER TO AS-170501-0001 FOR THE APPLICATION SPECIFICATION.
- MOUNTING HARDWARE REQUIRED: M2x0.4 CAP SCREWS (6)  
MOUNTING SCREW LENGTH: BOARD THICKNESS + 4mm MAX
- THERMAL SOLUTION MUST PROVIDE MODULE GUIDANCE OR MODULE MAY STUB ON CONNECTOR DURING MATING.  
SAME FUNCTION AS COVER OR HEATSINK.

**RELEASE STATUS** | **RELEASE DATE**

**FORMAT:** release.dwg | **REVISION:** G | **DATE:** 2017/01/24

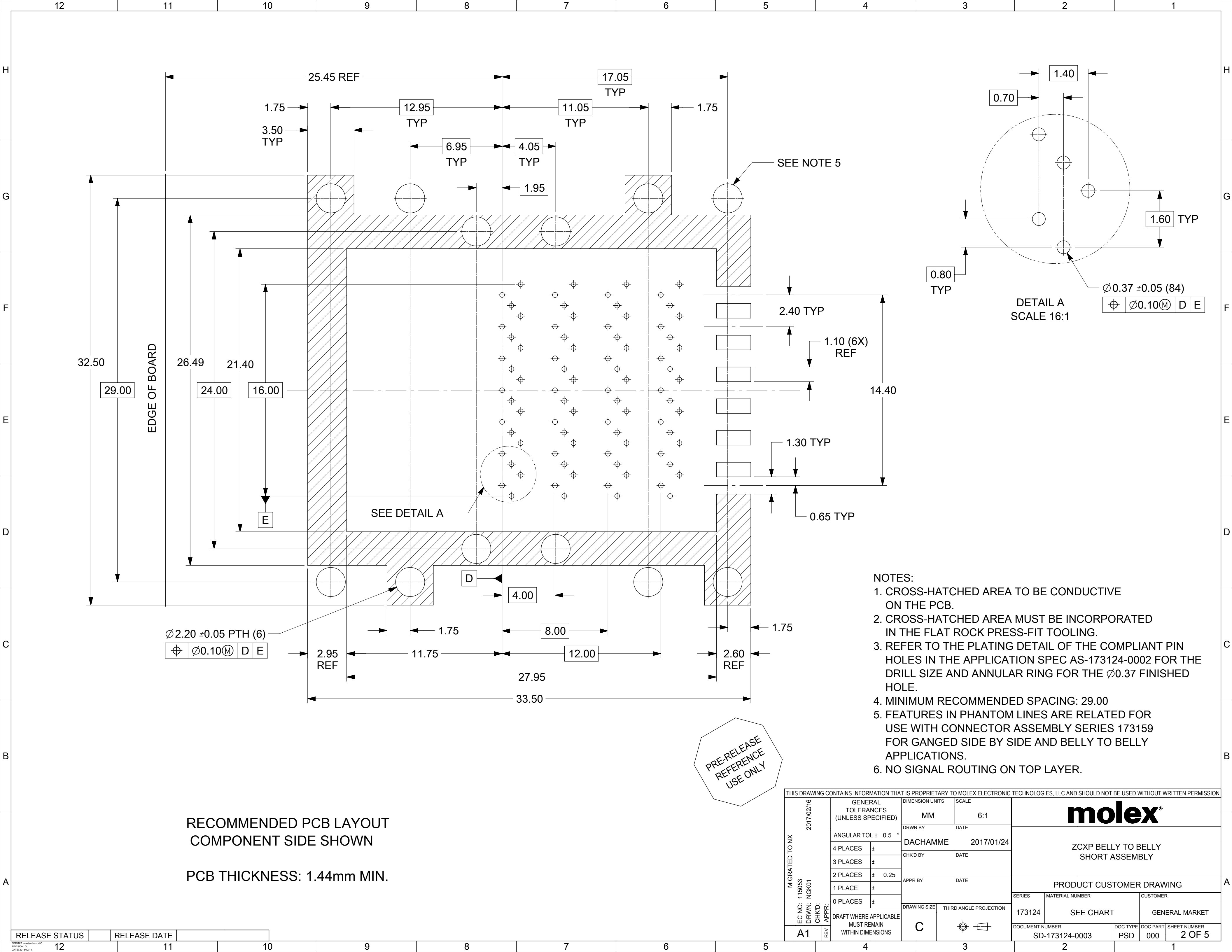
**THIS DRAWING CONTAINS INFORMATION THAT IS PROPRIETARY TO MOLEX ELECTRONIC TECHNOLOGIES, LLC AND SHOULD NOT BE USED WITHOUT WRITTEN PERMISSION**

GENERAL TOLERANCES (UNLESS SPECIFIED)		DIMENSION UNITS	SCALE
		MM	2:1
ANGULAR TOL ± 0.5 °		DRWN BY	DATE
4 PLACES ±		DACHAMME	2017/01/24
3 PLACES ±		CHK'D BY	DATE
2 PLACES ± 0.25		APPR BY	DATE
1 PLACE ±		DRAWING SIZE	THIRD ANGLE PROJECTION
0 PLACES ±		C	
DRAFT WHERE APPLICABLE MUST REMAIN WITHIN DIMENSIONS			

SERIES	MATERIAL NUMBER	CUSTOMER
173124	SEE CHART	GENERAL MARKET

DOCUMENT NUMBER	DOC TYPE	DOC PART	SHEET NUMBER
SD-173124-0003	PSD	000	1 OF 5

RELEASE STATUS		RELEASE DATE												A1	REV	WITHIN DIMENSIONS		C			SD-173124-0003		PSD	000	1 OF 5	
12		11		10		9		8		7		6		5		4		3		2		1				



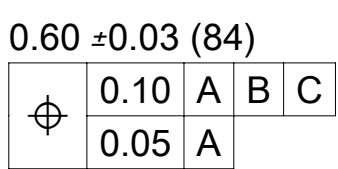
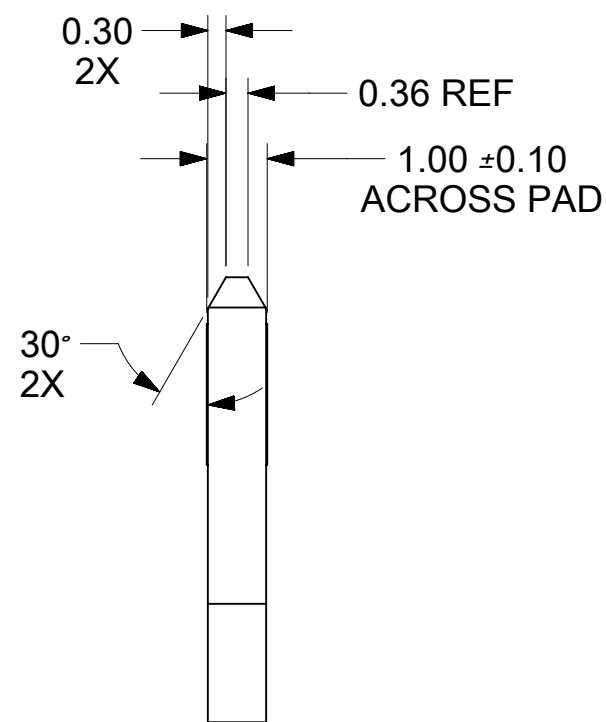
RECOMMENDED PCB LAYOUT  
COMPONENT SIDE SHOWN

PCB THICKNESS: 1.44mm MIN.

- NOTES:
1. CROSS-HATCHED AREA TO BE CONDUCTIVE ON THE PCB.
  2. CROSS-HATCHED AREA MUST BE INCORPORATED IN THE FLAT ROCK PRESS-FIT TOOLING.
  3. REFER TO THE PLATING DETAIL OF THE COMPLIANT PIN HOLES IN THE APPLICATION SPEC AS-173124-0002 FOR THE DRILL SIZE AND ANNULAR RING FOR THE  $\varnothing 0.37$  FINISHED HOLE.
  4. MINIMUM RECOMMENDED SPACING: 29.00
  5. FEATURES IN PHANTOM LINES ARE RELATED FOR USE WITH CONNECTOR ASSEMBLY SERIES 173159 FOR GANGED SIDE BY SIDE AND BELLY TO BELLY APPLICATIONS.
  6. NO SIGNAL ROUTING ON TOP LAYER.

PRE-RELEASE  
REFERENCE  
USE ONLY

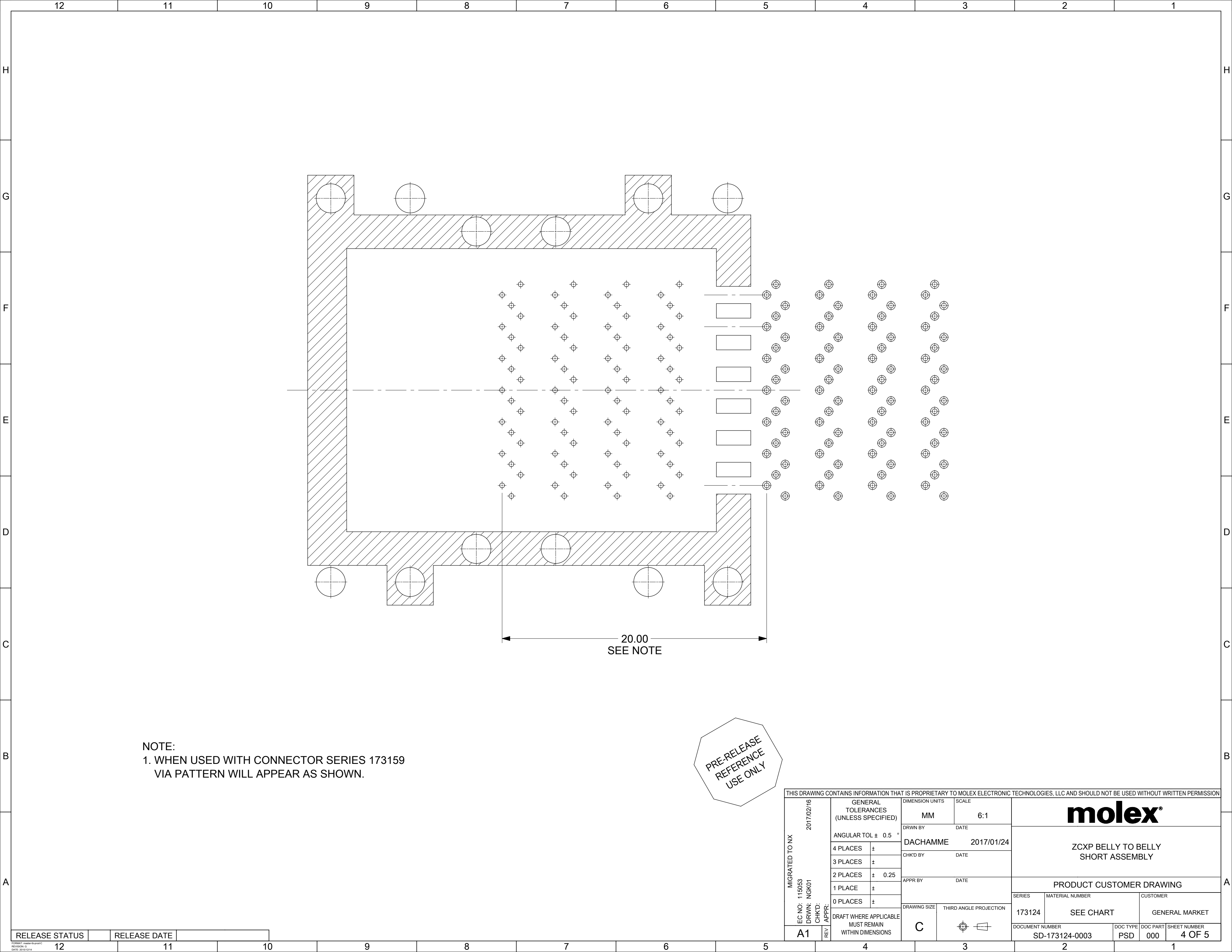
THIS DRAWING CONTAINS INFORMATION THAT IS PROPRIETARY TO MOLEX ELECTRONIC TECHNOLOGIES, LLC AND SHOULD NOT BE USED WITHOUT WRITTEN PERMISSION									
MIGRATED TO NX EC NO: 115053 DRWN: NGK01 CHKD: REV APPR:	GENERAL TOLERANCES (UNLESS SPECIFIED)		DIMENSION UNITS	SCALE	<b>molex</b> <sup>®</sup>				
	ANGULAR TOL ± 0.5 °		MM	6:1					
	4 PLACES	±	DRWN BY	DATE	ZCXP BELLY TO BELLY SHORT ASSEMBLY				
	3 PLACES	±	DACHAMME	2017/01/24					
	2 PLACES	± 0.25	CHK'D BY	DATE	PRODUCT CUSTOMER DRAWING				
	1 PLACE	±	APPR BY	DATE					
	0 PLACES	±	DRAFT WHERE APPLICABLE MUST REMAIN WITHIN DIMENSIONS	DATE					
A1	REV	APPR	DRAWING SIZE	THIRD ANGLE PROJECTION	SERIES	MATERIAL NUMBER	CUSTOMER		
			C		173124	SEE CHART	GENERAL MARKET		
					DOCUMENT NUMBER	SD-173124-0003	DOC TYPE	PSD	DOC PART
							000	SHEET NUMBER	2 OF 5



PRE-RELEASE  
REFERENCE  
USE ONLY

1. 0.03 MINIMUM KEEP OUT FOR SOLDER MASK AROUND ALL PADS
2. DATUM B TARGETS ARE DEFINED BY THE RESPECTIVE PAD CENTER LINES AND THE LEADING EDGE OF THE TARGET PADS

THIS DRAWING CONTAINS INFORMATION THAT IS PROPRIETARY TO MOLEX ELECTRONIC TECHNOLOGIES, LLC AND SHOULD NOT BE USED WITHOUT WRITTEN PERMISSION															
MIGRATED TO NX EC NO: 115053 DRWN: NGK01 CHK'D: APPR:		2017/02/16		GENERAL TOLERANCES (UNLESS SPECIFIED)		DIMENSION UNITS		SCALE		<div>molex®</div>					
						MM		6:1							
		ANGULAR TOL ± 0.5 °		DRWN BY		DATE		ZCXP BELLY TO BELLY SHORT ASSEMBLY							
				DACHAMME		2017/01/24									
		4 PLACES ±		CHK'D BY		DATE									
		3 PLACES ±													
		2 PLACES ± 0.25		APPR BY		DATE		PRODUCT CUSTOMER DRAWING							
		1 PLACE ±													
0 PLACES ±		DRAWING SIZE		THIRD ANGLE PROJECTION		SERIES		MATERIAL NUMBER		CUSTOMER					
DRAFT WHERE APPLICABLE MUST REMAIN WITHIN DIMENSIONS						173124		SEE CHART		GENERAL MARKET					
		A1		REV		DOCUMENT NUMBER SD-173124-0003				DOC TYPE PSD	DOC PART 000	SHEET NUMBER 3 OF 5			

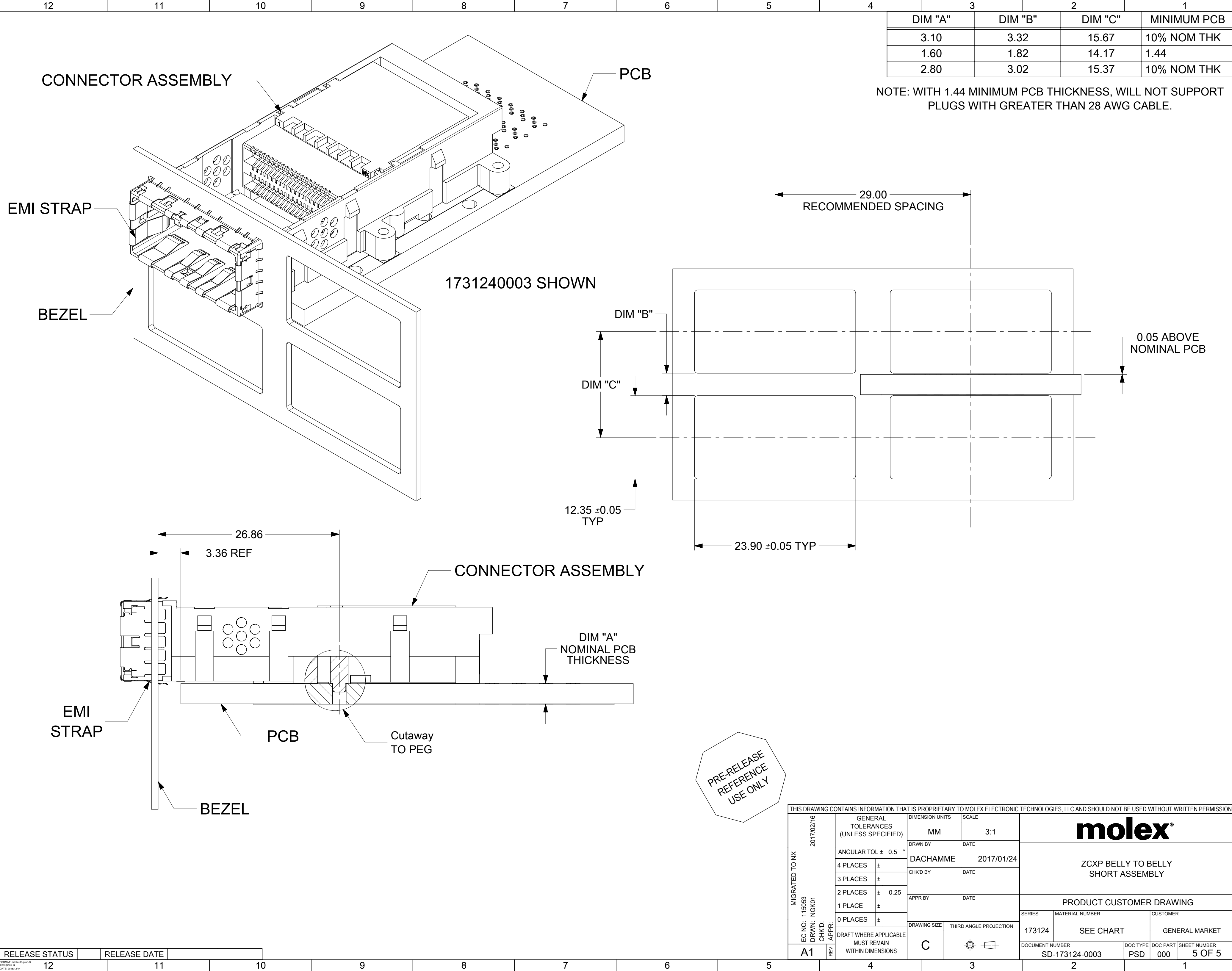


NOTE:  
1. WHEN USED WITH CONNECTOR SERIES 173159  
VIA PATTERN WILL APPEAR AS SHOWN.

PRE-RELEASE  
REFERENCE  
USE ONLY

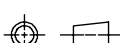
THIS DRAWING CONTAINS INFORMATION THAT IS PROPRIETARY TO MOLEX ELECTRONIC TECHNOLOGIES, LLC AND SHOULD NOT BE USED WITHOUT WRITTEN PERMISSION											
MIGRATED TO NX EC NO: 115053 DRWN: NGK01 CHKD: REV APPR:	2017/02/16		GENERAL TOLERANCES (UNLESS SPECIFIED)		DIMENSION UNITS	SCALE	<b>molex®</b>				
			ANGULAR TOL ± 0.5 °		MM	6:1					
			4 PLACES ±		DRWN BY	DATE	ZCXP BELLY TO BELLY SHORT ASSEMBLY				
			3 PLACES ±		DACHAMME	2017/01/24					
			2 PLACES ± 0.25		CHK'D BY	DATE	PRODUCT CUSTOMER DRAWING				
			1 PLACE ±		APPR BY	DATE					
			0 PLACES ±				SERIES	MATERIAL NUMBER	CUSTOMER		
A1			DRAFT WHERE APPLICABLE MUST REMAIN WITHIN DIMENSIONS		DRAWING SIZE	THIRD ANGLE PROJECTION	173124	SEE CHART	GENERAL MARKET		
					C		DOCUMENT NUMBER		DOC TYPE	DOC PART	SHEET NUMBER
							SD-173124-0003		PSD	000	4 OF 5

RELEASE STATUS		RELEASE DATE	
----------------	--	--------------	--



DIM "A"	DIM "B"	DIM "C"	MINIMUM PCB
3.10	3.32	15.67	10% NOM THK
1.60	1.82	14.17	1.44
2.80	3.02	15.37	10% NOM THK

NOTE: WITH 1.44 MINIMUM PCB THICKNESS, WILL NOT SUPPORT PLUGS WITH GREATER THAN 28 AWG CABLE.

THIS DRAWING CONTAINS INFORMATION THAT IS PROPRIETARY TO MOLEX ELECTRONIC TECHNOLOGIES, LLC AND SHOULD NOT BE USED WITHOUT WRITTEN PERMISSION															
MIGRATED TO NX EC NO: 115053 DRWN: NGK01 CHKD: APPR:		GENERAL TOLERANCES (UNLESS SPECIFIED)		DIMENSION UNITS		SCALE		<div>molex<sup>®</sup></div>							
				MM		3:1									
		ANGULAR TOL ± 0.5 °		DRWN BY		DATE		ZCXP BELLY TO BELLY SHORT ASSEMBLY							
		4 PLACES ±		DACHAMME		2017/01/24									
		3 PLACES ±		CHK'D BY		DATE									
		2 PLACES ± 0.25		APPR BY		DATE		PRODUCT CUSTOMER DRAWING							
		1 PLACE ±		DRAWING SIZE		THIRD ANGLE PROJECTION									
0 PLACES ±		DRAFT WHERE APPLICABLE MUST REMAIN WITHIN DIMENSIONS		C				173124		SEE CHART		GENERAL MARKET			
A1		REV						DOCUMENT NUMBER		DOC TYPE		DOC PART		SHEET NUMBER	
								SD-173124-0003		PSD		000		5 OF 5	