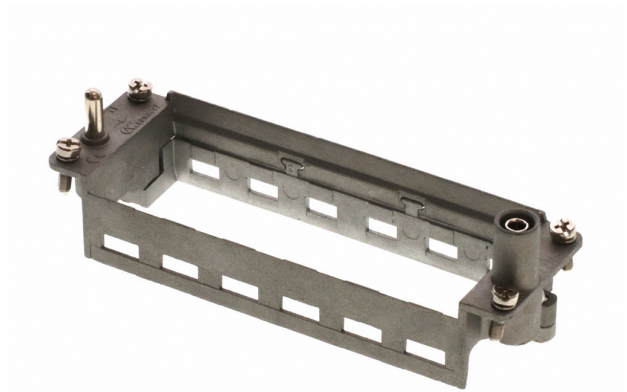





**Part Number :** 936010562  
**Product Description :** GWconnect STD - Standard, Single Lever Bulkhead Mount Housing, Polyamide, with 1 Lever, Right Angle, with Gasket, Size 3A«21x21», Pg11 Thread, Grey White  
**Series Number :** 93601  
**Status :** Active  
**Product Category :** Heavy-Duty Connectors  
**Engineering Number :** 7803.6205.0



## Product Environment Compliance

### Compliance

GADSL/IMDS	Not Relevant
China RoHS	
EU ELV	Not Relevant
Low-Halogen Status	Low-Halogen per IEC 61249-2-21
REACH SVHC	Contains Lead per D(2024)4144-DC (27 June 2024)
EU RoHS	Compliant with Exemption 6(c) per EU 2015/863

### Multiple Part Product Compliance Statements

- Eu RoHS
- REACH SVHC
- Low-Halogen

### Multiple Part Industry Compliance Documents

- IPC 1752A Class C
- IPC 1752A Class D
- Molex Product Compliance Declaration
- IEC-62474
- chemSHERPA (xml)

### EU RoHS Certificate of Compliance

## Part Details

## General

Status	Active
Category	Heavy-Duty Connectors
Series	93601
Description	GWconnect STD - Standard, Single Lever Bulkhead Mount Housing, Polyamide, with 1 Lever, Right Angle, with Gasket, Size 3A«21x21», Pg11 Thread, Grey White
Comments	IP67 with screw gasket.
Component Type	Single Lever Bulkhead Housing
IP Rating	IP66, IP67
Product Family	GWconnect Heavy Duty Connectors (HDC)
Product Name	GWconnect
Standard	ANSI/UL 50, ANSI/UL 50 E, CSA C22.2 No.94-1-2, EN 61984
Type	STD
UPC	887191838830

## Agency

CSA	256883
UL	E249674

## Electrical

Voltage - Maximum	230V / 400V
-------------------	-------------

## Physical

Component Size	3A «21x21»
Housing Color	Grey White RAL 9002
Lock to Mating Part	Yes
Material - Gasket	NBR
Material - Housing	Polyamide
Material - Lever	Polyamide
Mounting Style	Bulkhead
Net Weight	18.000/g
Number of Levers	1

Packaging Type	Bag
Thread Size	Pg11
Thread Type	(Pg)

Use with Part(s)

Description	Part Number
Use With	Size 3A «21x21» S-A, S-D, and S-Q Inserts