

DESIGNED & DIMENSIONED
IN MILLIMETERS[INCHES]

FIG 1
(UPT-04-03.0-01-X-V SHOWN)

DO NOT
SCALE FROM
THIS PRINT

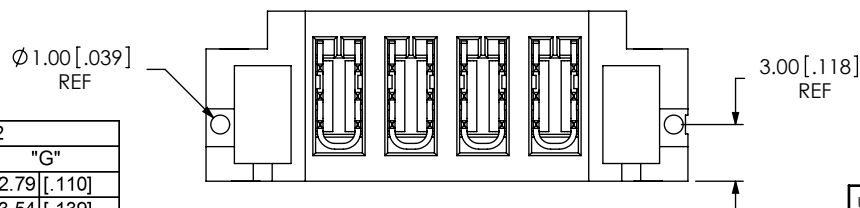
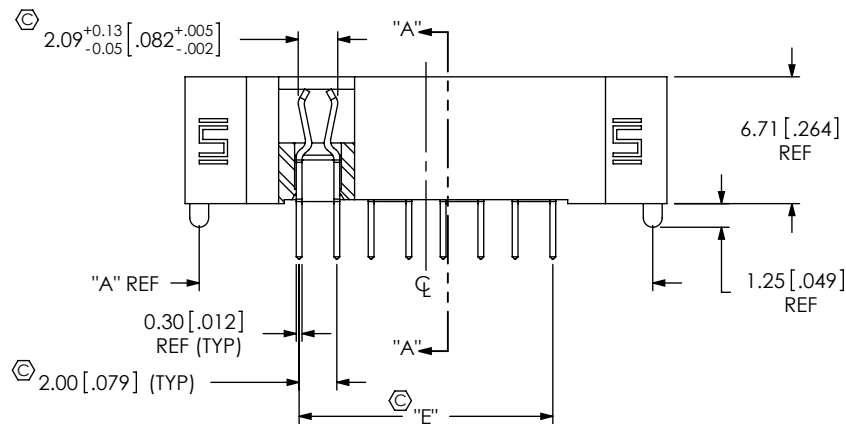
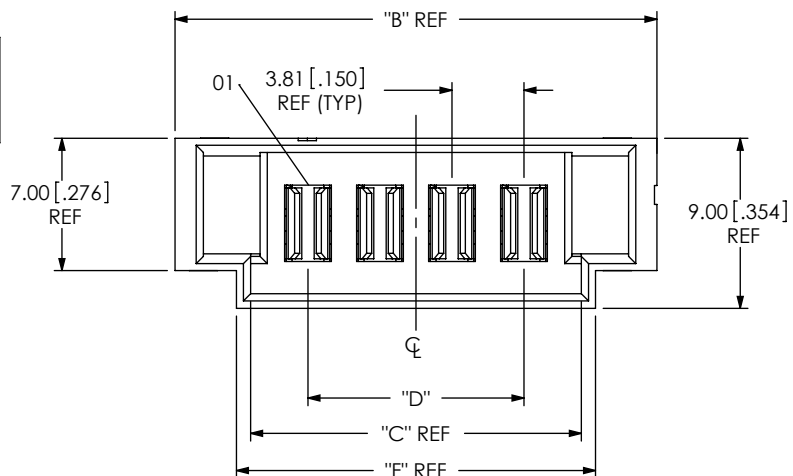


TABLE 2	
TAIL LENGTH	"G"
-01	2.79 [.110]
-02	3.54 [.139]
-03	2.33 [.092]

TABLE 1						
PART NUMBER	"A"	"B"	"C"	"D"	"E"	"F"
UPT-02-03.0-XX-X-V-XX	16.38 [.645]	17.88 [.704]	9.88 [.389]	3.81 [.150]	5.82 [.229]	11.38 [.448]
UPT-04-03.0-XX-X-V-XX	24.00 [.945]	25.50 [1.004]	17.50 [.689]	11.43 [.450]	13.44 [.529]	19.00 [.748]
UPT-06-03.0-XX-X-V-XX	31.62 [1.245]	33.12 [1.304]	25.12 [.989]	19.05 [.750]	21.06 [.829]	26.62 [1.048]
UPT-08-03.0-XX-X-V-XX	39.24 [1.545]	40.74 [1.604]	32.74 [1.289]	26.67 [1.050]	28.68 [1.129]	34.24 [1.348]

UPT-XX-XX.X-XX-X-XX-XX-XX

No. OF POSITIONS
-02: 2 POSITIONS
-04: 4 POSITIONS
-06: 6 POSITIONS
-08: 8 POSITIONS

HEIGHT
-03.0

OPTION
TAPE & REEL

OPTION
-LC: LOCKING CLIP
(AVAILABLE WITH -V OPTION ONLY)

TAIL OPTION

-VERTICAL
-PV: PRESS FIT VERTICAL
(ONLY AVAILABLE ON -03 TAIL LENGTH)

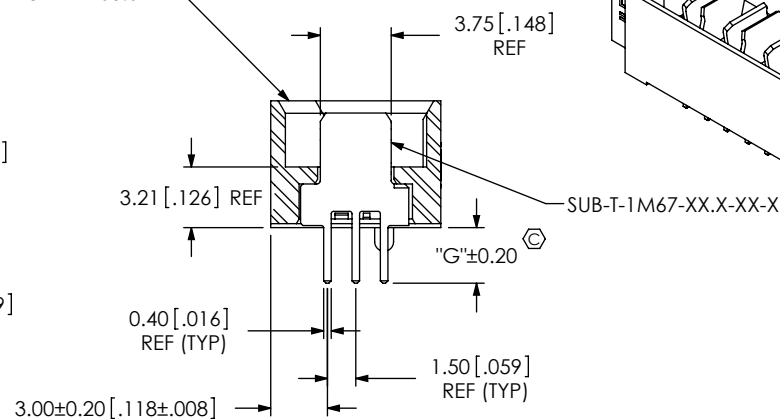
PLATING

-L: 10 μ" LIGHT SELECTIVE GOLD IN CONTACT
AREA, MATTE TIN ON TAIL
-T: MATTE TIN CONTACT AND TAIL
(ONLY AVAILABLE ON -PV)

TAIL LENGTH

-01: FOR 1.57 [.062] THICK PCB (SEE FIG 1)
(USE SUB-T-1M67-XX.X-01-X)
-02: FOR 2.36 [.093] THICK PCB (SEE FIG 2)
(USE SUB-T-1M67-XX.X-02-X)
-03: PRESS-FIT FOR 1.57 [.062] THICK PCB AND UP
(USE SUB-T-1M95-XX.X-X) (SEE FIG 3)
(SEE NOTE 7)

UPT-XX-03.0-V



SECTION "A"- "A"

NOTES:

1. Ⓢ REPRESENTS A CRITICAL DIMENSION.
2. BURR ALLOWANCE: 0.038 [.0015] MAX.
3. MINIMUM PUSHOUT FORCE: 4.45N [1.0 LB].
4. MAXIMUM BOW: 0.15 [.006].
5. MINIMUM -LC PULL OUT FORCE: 2.23 N [0.5 LB]
6. PARTS TO BE PACKAGED IN TUBES UNLESS OTHERWISE STATED.
7. APPLICATION TOOLING REQUIRED FOR PV TAIL LENGTH CONTACT IPG.

UNLESS OTHERWISE SPECIFIED,
DIMENSIONS ARE IN MILLIMETERS.
TOLERANCES ARE:

DECIMALS ANGLES
X.X: ±0.3 [.01]
X.XX: ±0.13 [.005]
X.XXX: ±0.051 [.0020]

PROPRIETARY NOTE

THIS DOCUMENT CONTAINS INFORMATION
CONFIDENTIAL AND PROPRIETARY TO
SAMTEC, INC. AND SHALL NOT BE REPRODUCED
OR TRANSFERRED TO OTHER DOCUMENTS OR
DISCLOSED TO OTHERS OR USED FOR ANY
PURPOSE OTHER THAN THAT WHICH IT WAS
OBTAINED WITHOUT THE EXPRESSED WRITTEN
CONSENT OF SAMTEC, INC.

MATERIAL: DO NOT SCALE DRAWING
INSULATOR: LCP, COLOR: BLACK UV 94 VO
TERMINAL: BeCu
LOCKING CLIP: PHOS BRONZE

SHEET SCALE: 1:0.4

samtec

520 PARK EAST BLVD, NEW ALBANY, IN 47150
PHONE: 812-944-6733 FAX: 812-948-5047
e-Mail: info@SAMTEC.com code: 55322

DESCRIPTION:

UPT-V, ASSEMBLY

DWG. NO.

UPT-XX-XX.X-XX-X-XX-XX-XX

BY: B RAY

08/21/2008

SHEET 1 OF 2

FIG 2
(UPT-04-03.0-02-X-V-LC SHOWN)
(SAME AS FIG 1, DIFFERENT AS SHOWN)

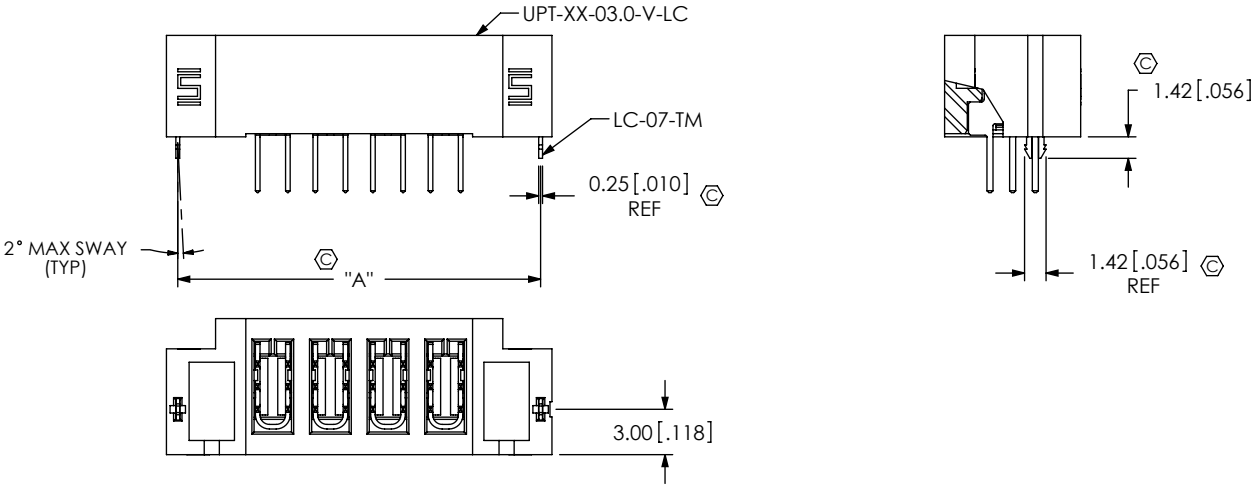
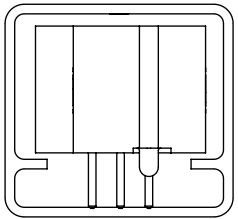
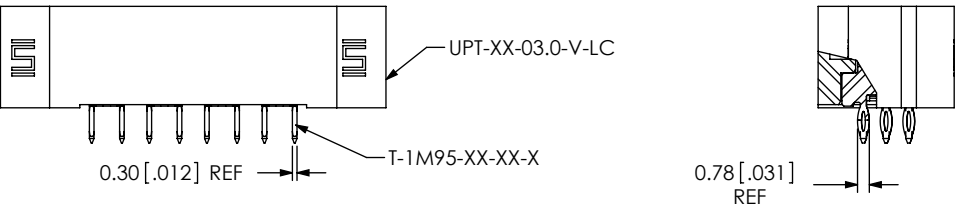
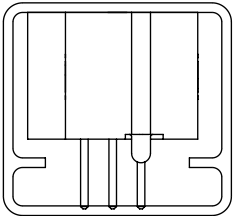


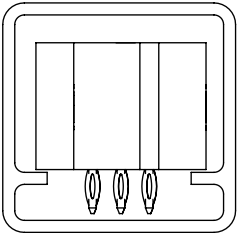
FIG 3
(UPT-04-03-X-PV SHOWN)
(SAME AS FIG 1, DIFFERENT AS SHOWN)



-01 TAIL LENGTH



-02 TAIL LENGTH



-03 TAIL LENGTH

PACKAGING TUBE VIEW

TUBE TABLE		
TAIL LENGTH	TUBE	PLUG
-01	PT-YFW-07F-P	TP-29
-02	PT-YFW-07F-P	TP-29
-03	PT-YFW-07F-P	TP-29

TABLE 3		
PLATING	POWER PIN CONTACT AREA	POWER PIN TAIL
-L	LIGHT GOLD	MATTE TIN
-T	MATTE TIN	MATTE TIN

PROPRIETARY NOTE
THIS DOCUMENT CONTAINS INFORMATION
CONFIDENTIAL AND PROPRIETARY TO
SAMTEC, INC. AND SHALL NOT BE REPRODUCED
OR TRANSFERRED TO OTHER DOCUMENTS OR
DISCLOSED TO OTHERS OR USED FOR ANY
PURPOSE OTHER THAN THAT WHICH IT WAS
OBTAINED WITHOUT THE EXPRESSED WRITTEN
CONSENT OF SAMTEC, INC.

DO NOT SCALE DRAWING

SHEET SCALE: 3:1



520 PARK EAST BLVD, NEW ALBANY, IN 47150
PHONE: 812-944-6733 FAX: 812-948-5047
e-Mail: info@SAMTEC.com code: 55322

DESCRIPTION:
UPT-V, ASSEMBLY

DWG. NO.
UPT-XX-XX.X-XX-X-XX-XX-XX

BY: B RAY 08/21/2008 SHEET 2 OF 2