

821B YYY - 2 1 3 R 00 1

SERIES 12.00 [0.475]

# OF POSITIONS (Ex. 002)

\*\*SEE CHART A\*\*

2 = FEMALE

1 = GOLD FLASH

RoHS COMPLIANT

NICKEL/CHROME PLATED SHELL

VERTICAL (PANEL MOUNT)

CHARACTERISSTICS

MATERIALS

SHELL : BRASS

SHELL PLATING : NICKEL

NUT : BRASS

NUT PLATING : NICKEL

LATCH SLEEVE : BRASS

LATCH SLEEVE PLATING : NICKEL

CONTACTS : COPPER ALLOY

CONTACT PLATING : 7µ" GOLD PLATED OVER 196µ" NICKEL MIN.

INSULATOR : PPS (HIGH TEMPERATURE)

MECHANICAL

DURABILITY: 5000 CYCLES

OPERATING TEMP. RANGE: -40° C ~ +200° C

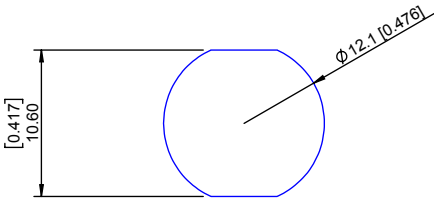
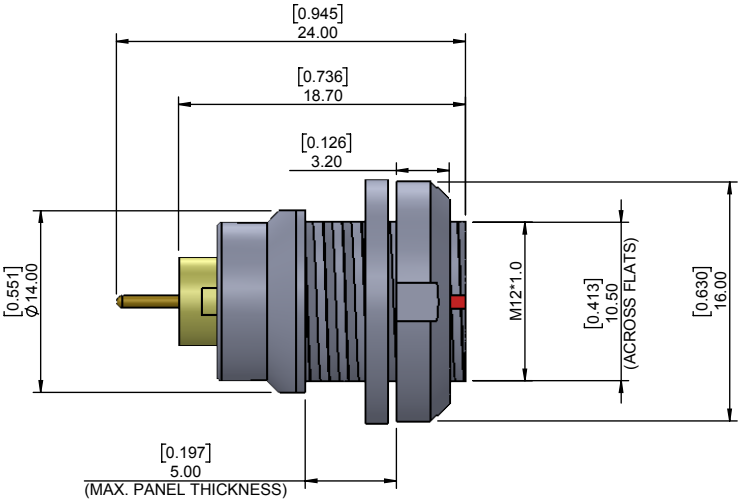
PROCESS TEMPERATURE : 260°C FOR 5 SECONDS

MAX. TORQUE VALUE : 4.5 Nm [39 IN/lbs]

SHIELDING: 75dB @ 10MHz

40dB @ 1GHz

IP RATING: 50



PANEL CUTOUT

TOLERANCE = +0.10, -0.0  
[+0.004, -0.00]

\*\*NOTE\*\*  
SEE PAGE 2 FOR BOARD LAYOUTS

CHART A

● = KEY LOCATION      \*\*VIEW FROM TERMINATION END\*\*

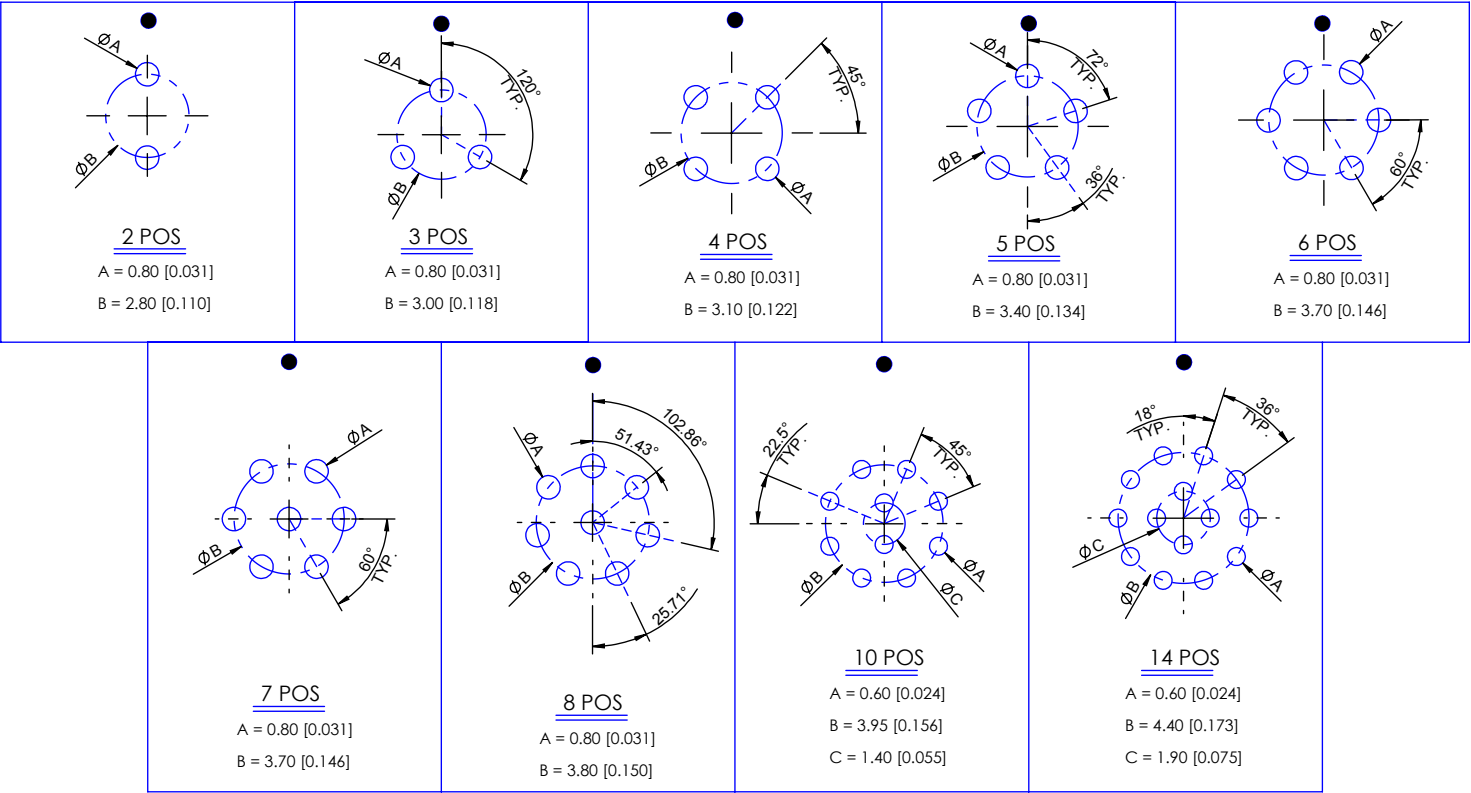
2 POSITION 15 AMP MAX. PIN Ø = 1.30 [0.051]	3 POSITION 12 AMP MAX. PIN Ø = 1.30 [0.051]	4 POSITION 10 AMP MAX. PIN Ø = 0.90 [0.035]	5 POSITION 9 AMP MAX. PIN Ø = 0.90 [0.035]	6 POSITION 7 AMP MAX. PIN Ø = 0.70 [0.028]	7 POSITION 7 AMP MAX. PIN Ø = 0.70 [0.028]	8 POSITION 5 AMP MAX. PIN Ø = 0.70 [0.028]	10 POSITION 2.5 AMP MAX. PIN Ø = 0.50 [0.020]	14 POSITION 2 AMP MAX. PIN Ø = 0.50 [0.020]
CONTACT RESISTANCE = 5 mΩ TEST VOLTAGE = 1500V WORKING VOLTAGE = 500V	CONTACT RESISTANCE = 5 mΩ TEST VOLTAGE = 1300V WORKING VOLTAGE = 430V	CONTACT RESISTANCE = 6 mΩ TEST VOLTAGE = 1300V WORKING VOLTAGE = 430V	CONTACT RESISTANCE = 6 mΩ TEST VOLTAGE = 1250V WORKING VOLTAGE = 415V	CONTACT RESISTANCE = 7.5 mΩ TEST VOLTAGE = 1050V WORKING VOLTAGE = 350V	CONTACT RESISTANCE = 7.5 mΩ TEST VOLTAGE = 950V WORKING VOLTAGE = 315V	CONTACT RESISTANCE = 7.5 mΩ TEST VOLTAGE = 950V WORKING VOLTAGE = 315V	CONTACT RESISTANCE = 10 mΩ TEST VOLTAGE = 900V WORKING VOLTAGE = 300V	CONTACT RESISTANCE = 10 mΩ TEST VOLTAGE = 800V WORKING VOLTAGE = 260V

RoHS COMPLIANT

	THESE DRAWINGS AND SPECIFICATIONS ARE THE PROPERTY OF NorComp AND SHALL NOT BE REPRODUCED, COPIED OR USED AS THE BASIS FOR THE MANUFACTURE OR SALE OF APPARATUS WITHOUT WRITTEN PERMISSION.	NorComp	DRAWN: M. SIGMON	DATE: 02-10-16	SCALE: N.T.S.	SHEET 1	OF 2	REV: 3
						DWG NO. 821BYYY-213R001		

BOARD LAYOUTS

● = KEY LOCATION



RoHS COMPLIANT



THESE DRAWINGS AND SPECIFICATIONS ARE THE PROPERTY OF NorComp AND SHALL NOT BE REPRODUCED, COPIED OR USED AS THE BASIS FOR THE MANUFACTURE OR SALE OF APPARATUS WITHOUT WRITTEN PERMISSION.

NorComp

DRAWN:  
M. SIGMON

DATE:  
02-10-16

SCALE:  
N.T.S.

SHEET  
2 OF 2

REV:  
3

DWG NO.  
821BYYY-213R001

# Mouser Electronics

Authorized Distributor

Click to View Pricing, Inventory, Delivery & Lifecycle Information:

[NorComp:](#)

[821B008-213R001](#) [821B007-213R001](#) [821B014-213R001](#) [821B003-213R001](#) [821B010-213R001](#) [821B006-](#)  
[213R001](#) [821B005-213R001](#) [821B002-213R001](#) [821B004-213R001](#) [821B006-273L601](#) [821B006-273L301](#)  
[821B006-273L501](#) [821B006-273L401](#) [821B006-273L701](#)