

1

2

3

4

A

B

C

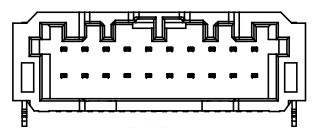
D

A

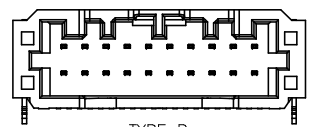
B

C

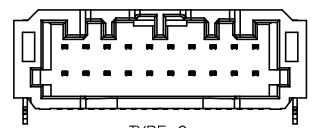
D



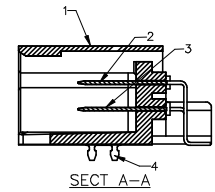
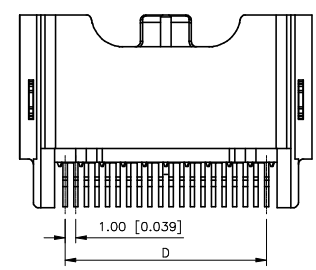
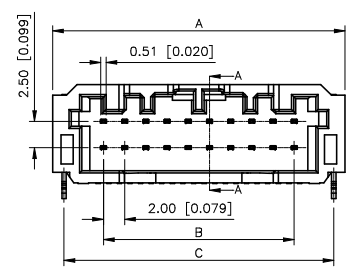
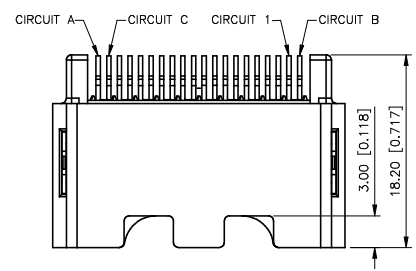
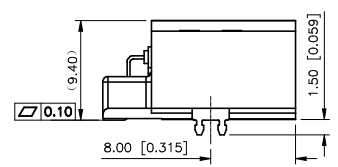
TYPE A



TYPE B



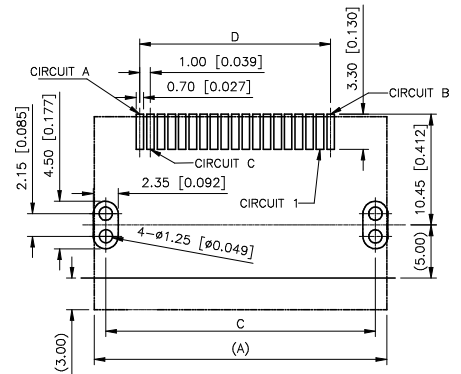
TYPE C



SECT A-A

REVISIONS					
REV.	ECN NO.	LOCATION	DESCRIPTION	DATE	DESIGN
A0	N/A		INITIAL RELEASE	2024.07.17	桑 葦

规格Specifications:
 额定电压Voltage rating:60V AC/DC
 额定电流Current rating:3A AC/DC
 耐受电压Withstanding voltage:500V AC/minute
 温度范围Temperature range:-40℃~+125℃
 绝缘电阻Insulation resistance:≥100MΩ
 接触电阻Contact resistance:≤10mΩ (测试后≤30mΩ)



PCB THICKNESS:1.6mm
 TOLERANCE±0.05
 (TOP VIEW)

PART NO.: X332X W R S-XXX-PP SN XX
 ① ② ③ ④ ⑤ ⑥ ⑦ ⑧ ⑨

- Series No:332A-TYPE A
332B-TYPE B
332C-TYPE C
- Category:W-Wafer
- Welding Board Angle:R-Straight 90°
- Welding Way:S-SMT
- Row No.Pin No:XX-See Table A
- Morphology:Blank-No CPA Feature
C-With CPA Feature
- Material:PP-PPS
- Planting Category:SN-Tin Plating
- Color:Blank-Black; GR-Gray;
BL-Blue

X332CWRS-XX-PPSNXX	X332CH-XX	X332XT-BSN	No CPA Feature
X332BWRS-XX-PPSNXX	X332BH-XX	X332XT-BSN	No CPA Feature
X332AWRS-XX-PPSNXX	X332AH-XX	X332XT-BSN	No CPA Feature
X332CWRS-XXC-PPSNXX	X332CH-XXC	X332XT-BSN	With CPA Feature
X332BWRS-XXC-PPSNXX	X332BH-XXC	X332XT-BSN	With CPA Feature
X332AWRS-XXC-PPSNXX	X332AH-XXC	X332XT-BSN	With CPA Feature
PART NO.	Suitable XKB HOUSING	Suitable XKB Terminal	NOTE

4	SOLDERING PIN	2	COPPER ALLOY	MATTE TIN PLATED,OVER NICKEL
3	CONTACT PIN	N/2	COPPER ALLOY	TIN PLATED,OVER NICKEL
2	CONTACT PIN	N/2	COPPER ALLOY	
1	HOUSING	1	PPS BLACK	
ITEM	PART NAME	Q'TY	MATERIAL	FINISH

TABLE A

PIN NO.	A	B	C	D
8	15.60	6.00	13.45	7.00
12	19.60	10.00	17.45	11.00
16	23.60	14.00	21.45	15.00
20	27.60	18.00	25.45	19.00
24	31.60	22.00	29.45	23.00
28	35.60	26.00	33.45	27.00
32	39.60	30.00	37.45	31.00
40	47.60	38.00	45.45	39.00

ANGLAR	±5°
X.	±0.40
X.x	±0.30
X.xx	±0.20
X.xxx	±0.15
UNSPECIFIED TOLERANCES	



XKB INDUSTRIAL PRECISION CO.,LIMITED

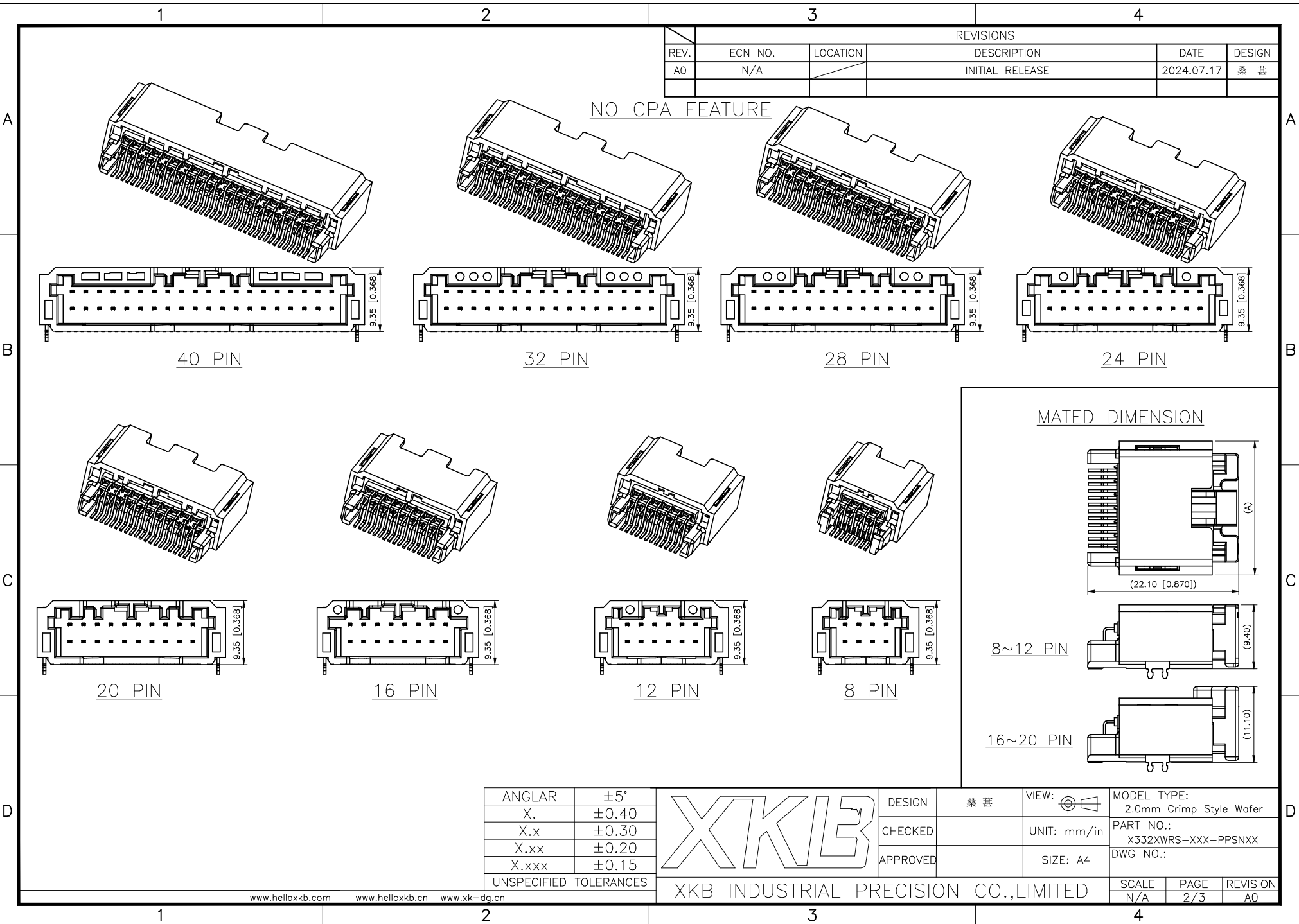
DESIGN	桑 葦	VIEW:		MODEL TYPE: 2.0mm Crimp Style Wafer
CHECKED		UNIT:	mm/in	PART NO.: X332WRS-XXX-PPSNXX
APPROVED		SIZE:	A4	DWG NO.:
				SCALE
				PAGE
				REVISION
				N/A
				1/3
				A0

1

2

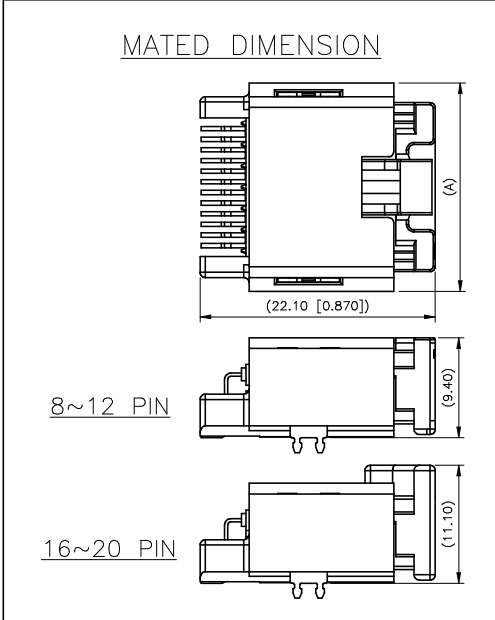
3

4

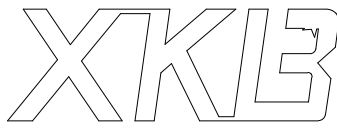


REVISIONS					
REV.	ECN NO.	LOCATION	DESCRIPTION	DATE	DESIGN
A0	N/A		INITIAL RELEASE	2024.07.17	桑 菘

NO CPA FEATURE



ANGLAR	±5°
X.	±0.40
X.x	±0.30
X.xx	±0.20
X.xxx	±0.15
UNSPECIFIED TOLERANCES	



DESIGN	桑 菘	VIEW:	
CHECKED		UNIT:	mm/in
APPROVED		SIZE:	A4

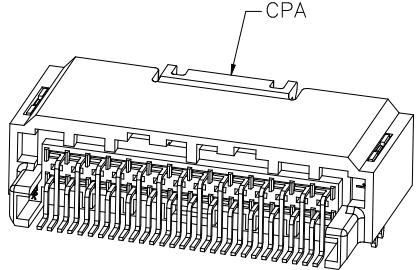
MODEL TYPE: 2.0mm Crimp Style Wafer		
PART NO.: X332XWRS-XXX-PPSNXX		
DWG NO.:		

XKB INDUSTRIAL PRECISION CO., LIMITED

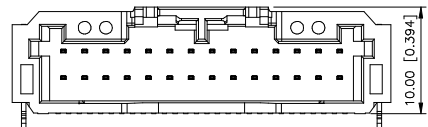
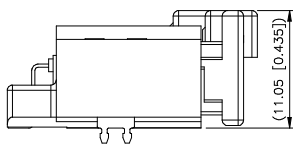
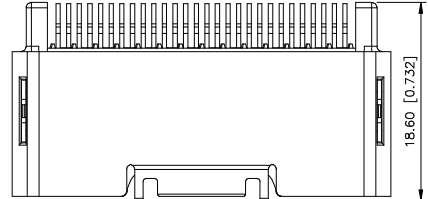
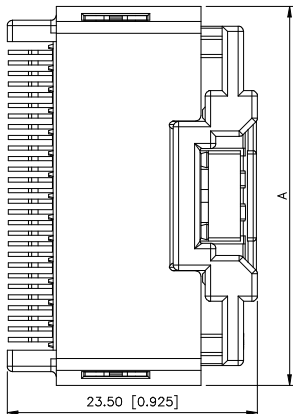
SCALE	PAGE	REVISION
N/A	2/3	A0

REVISIONS					
REV.	ECN NO.	LOCATION	DESCRIPTION	DATE	DESIGN
A0	N/A		INITIAL RELEASE	2024.07.17	桑 菘

WITH CPA FEATURE



MATED DIMENSION



16~40 PIN

16~40 PIN

ANGLAR	±5°
X.	±0.40
X.x	±0.30
X.xx	±0.20
X.xxx	±0.15
UNSPECIFIED TOLERANCES	



DESIGN	桑 菘	VIEW:	
CHECKED		UNIT:	mm/in
APPROVED		SIZE:	A4

MODEL TYPE:	2.0mm Crimp Style Wafer
PART NO.:	X332XWRS-XXX-PPSNXX
DWG NO.:	

XKB INDUSTRIAL PRECISION CO., LIMITED

SCALE	PAGE	REVISION
N/A	3/3	A0