

821B R YY - 2 1 3 R 00 1

SERIES 12.00 [0.475]  
R = RIGHT ANGLE  
# OF POSITIONS (Ex. 02)  
\*\*SEE CHART A\*\*  
2 = FEMALE  
1 = GOLD FLASH  
RoHS COMPLIANT  
NICKEL/CHROME PLATED SHELL  
VERTICAL (PANEL MOUNT)

CHARACTERISSTICS

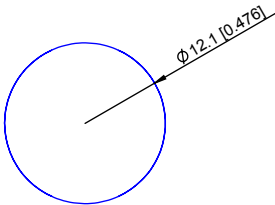
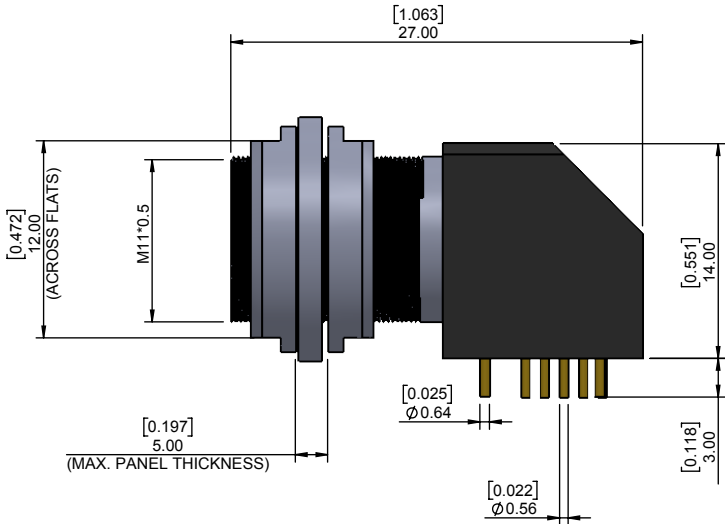
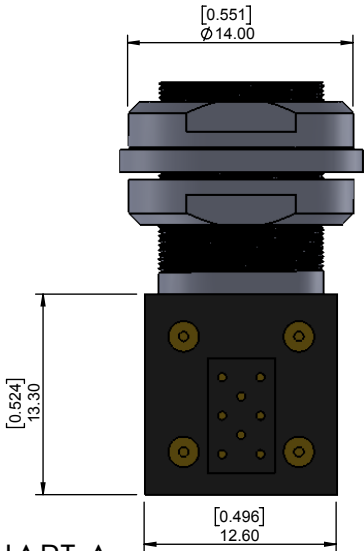
MATERIALS

SHELL : BRASS  
SHELL PLATING : NICKEL  
NUT : BRASS  
NUT PLATING : NICKEL  
LATCH SLEEVE : BRASS  
LATCH SLEEVE PLATING : NICKEL  
CONTACTS : COPPER ALLOY  
CONTACT PLATING : 7µ" GOLD PLATED OVER 196µ" NICKEL MIN.  
INSULATOR : PPS (HIGH TEMPERATURE)

MECHANICAL

DURABILITY: 5000 CYCLES  
OPERATING TEMP. RANGE: -40° C ~ +200° C  
PROCESS TEMPERATURE : 260°C FOR 5 SECONDS  
MAX. TORQUE VALUE : 4.5 Nm [39 IN/lbs]  
SHIELDING: 75dB @ 10MHz  
40dB @ 1GHz

IP RATING: 50

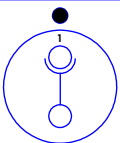


PANEL CUTOUT

TOLERANCE = +0.10, -0.0  
[+0.004, -0.00]

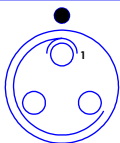
CHART A

● = KEY LOCATION \*\*VIEW FROM MATING FACE\*\*



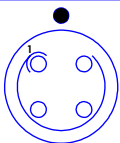
2 POSITION  
12 AMP MAX.  
PIN Ø = 1.30 [0.051]

CONTACT  
RESISTANCE = 5 mΩ  
TEST VOLTAGE = 1500V  
WORKING VOLTAGE = 500V



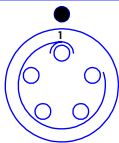
3 POSITION  
12 AMP MAX.  
PIN Ø = 1.30 [0.051]

CONTACT  
RESISTANCE = 5 mΩ  
TEST VOLTAGE = 1300V  
WORKING VOLTAGE = 430V



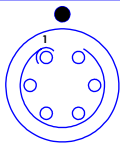
4 POSITION  
6 AMP MAX.  
PIN Ø = 0.90 [0.035]

CONTACT  
RESISTANCE = 6 mΩ  
TEST VOLTAGE = 1300V  
WORKING VOLTAGE = 430V



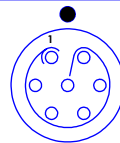
5 POSITION  
6 AMP MAX.  
PIN Ø = 0.90 [0.035]

CONTACT  
RESISTANCE = 6 mΩ  
TEST VOLTAGE = 1250V  
WORKING VOLTAGE = 415V



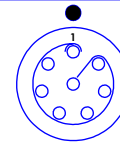
6 POSITION  
6 AMP MAX.  
PIN Ø = 0.70 [0.028]

CONTACT  
RESISTANCE = 7.5 mΩ  
TEST VOLTAGE = 1050V  
WORKING VOLTAGE = 350V



7 POSITION  
6 AMP MAX.  
PIN Ø = 0.70 [0.028]

CONTACT  
RESISTANCE = 7.5 mΩ  
TEST VOLTAGE = 950V  
WORKING VOLTAGE = 315V



8 POSITION  
5 AMP MAX.  
PIN Ø = 0.70 [0.028]

CONTACT  
RESISTANCE = 7.5 mΩ  
TEST VOLTAGE = 950V  
WORKING VOLTAGE = 315V

\*\*NOTE\*\*  
SEE PAGE 2 FOR  
BOARD LAYOUTS

RoHS COMPLIANT



THESE DRAWINGS AND SPECIFICATIONS  
ARE THE PROPERTY OF NorComp AND  
SHALL NOT BE REPRODUCED, COPIED  
OR USED AS THE BASIS FOR THE  
MANUFACTURE OR SALE OF APPARATUS  
WITHOUT WRITTEN PERMISSION.

NorComp

DRAWN:  
M. SIGMON

DATE:  
02-15-16

SCALE:  
N.T.S.

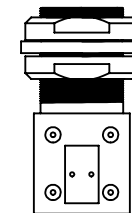
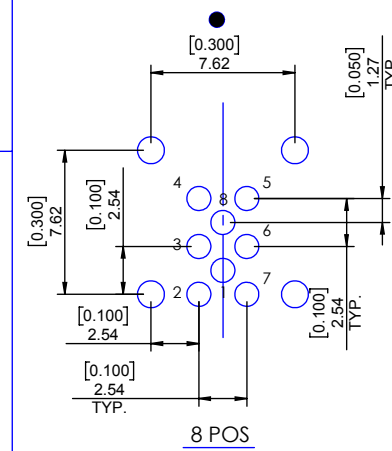
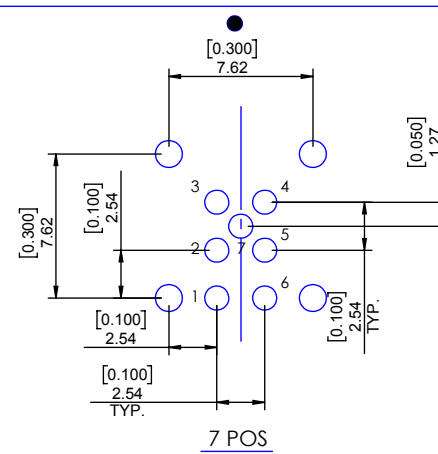
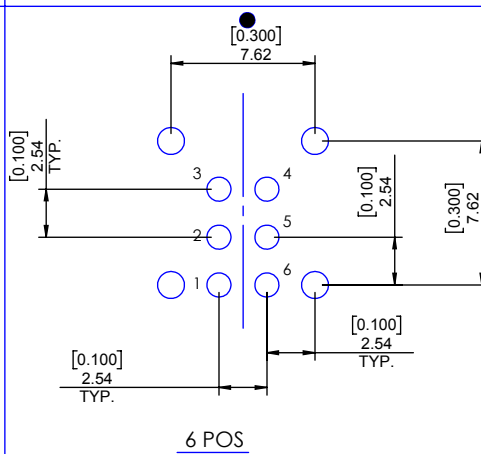
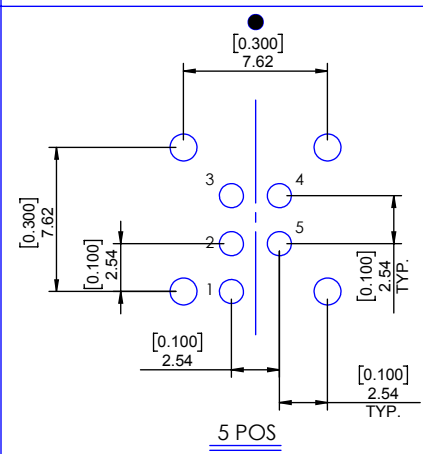
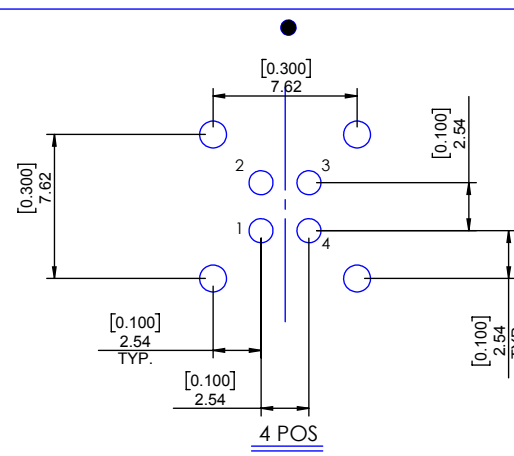
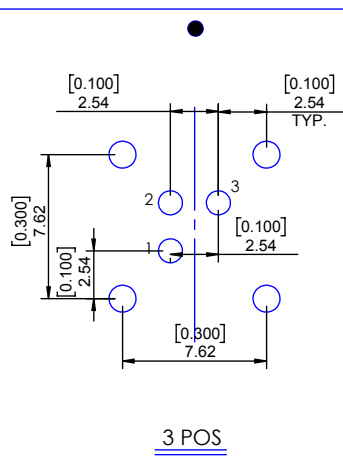
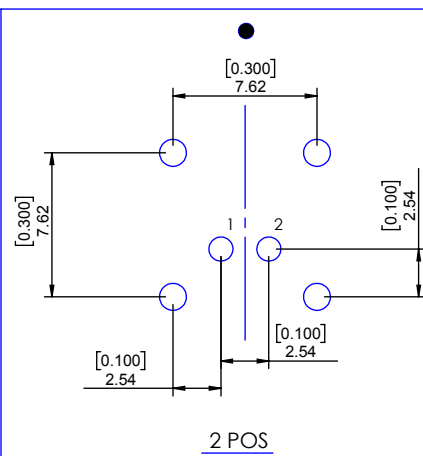
SHEET OF  
1 2

REV:  
3

DWG NO.  
821BRY-213R001

## BOARD LAYOUTS

● = KEY LOCATION

ALL HOLE SIZES:  $\varnothing 0.80$  [0.031]VIEW SHOWN FOR  
CONNECTOR ORIENTATION**RoHS COMPLIANT**

THESE DRAWINGS AND SPECIFICATIONS ARE THE PROPERTY OF NorComp AND SHALL NOT BE REPRODUCED, COPIED OR USED AS THE BASIS FOR THE MANUFACTURE OR SALE OF APPARATUS WITHOUT WRITTEN PERMISSION.

NorComp

DRAWN:

M. SIGMON

DATE:

02-15-16

SCALE:

N.T.S.

SHEET

OF

2 2

REV:

3

DWG NO.

821BRY-213R001

# Mouser Electronics

Authorized Distributor

Click to View Pricing, Inventory, Delivery & Lifecycle Information:

NorComp:

[821BR02-213R001](#) [821BR03-213R001](#) [821BR08-213R001](#) [821BR06-213R001](#) [821BR07-213R001](#) [821BR04-213R001](#) [821BR05-213R001](#)