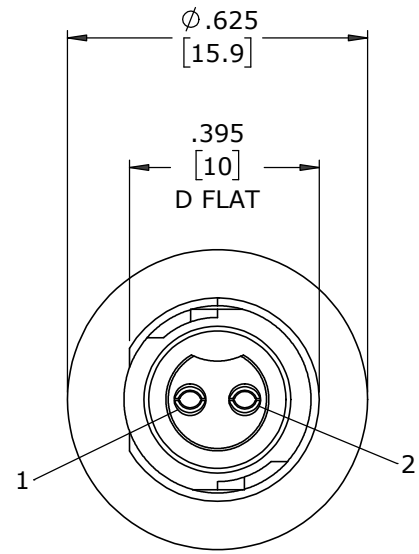


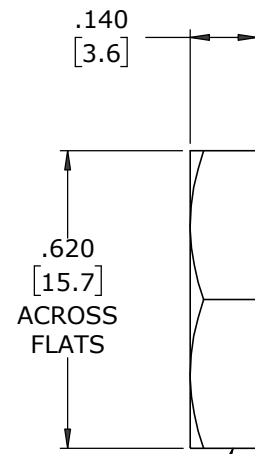
ASS'Y P/N	CONTACT QTY
W17281-2SG-P-300	2 #20
W17281-3SG-P-300	3 #20

**NOTES:**

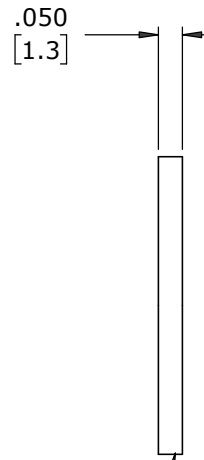
1. ALL PARTS ARE BULK PACKED
2. CONTACTS INSERTED INTO HOUSING AS SHOWN.
3. SEE DRAWING HPMCSTD FOR HOLE PATTERN.
4. ALL DIMENSIONS ARE REFERENCE EXCEPT THOSE WITH A TOLERANCE



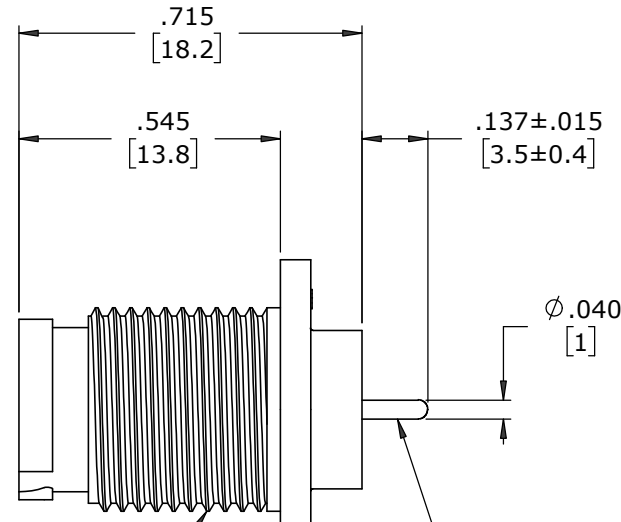
**FACE VIEW**  
W17281-2SG-P-300



HEX NUT  
MAT'L: UV PBT, BLACK

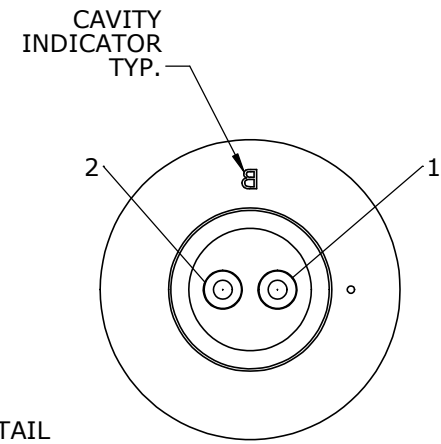


GASKET  
MAT'L: NEOPRENE, BLACK

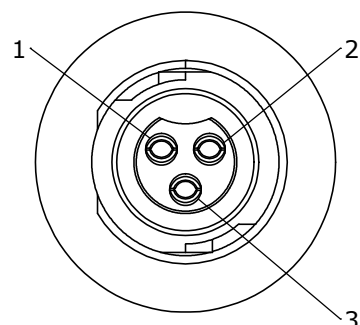


7/16-28 UNEF-2A  
MOD. THREAD  
PANEL CONNECTOR, FEMALE  
MAT'L: UV PBT, BLACK

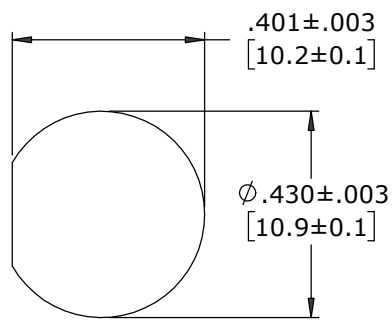
(2-3) #20 SOCKET CONTACTS, PC TAIL  
MAT'L: GOLD PLATED COPPER ALLOY



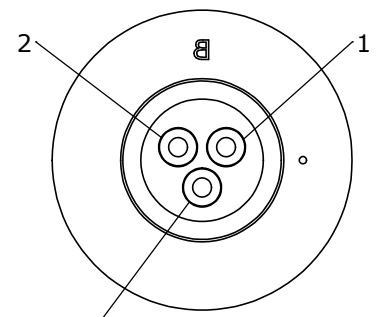
**WIRE VIEW**  
W17281-2SG-P-300



**FACE VIEW**  
W17281-3SG-P-300



**RECOMMENDED  
PANEL CUT-OUT**



**WIRE VIEW**  
W17281-3SG-P-300

CUSTOMER PRINT

PART NUMBER: W17281-XSG-P-300

**CUSTOMER APPROVAL**

THIS DOCUMENT CONTAINS CONFIDENTIAL INFORMATION PROPRIETARY TO CONXALL CORPORATION. ANY REPRODUCTION, DISCLOSURE, OR USE OF THIS DOCUMENT /INFORMATION IS EXPRESSLY PROHIBITED UNLESS AUTHORIZED IN WRITING BY CONXALL CORPORATION.

APPROVED BY: \_\_\_\_\_  
DATE: \_\_\_\_\_

MA	08-05-20	RELEASED PER PDR 18004-2
JGK	8/13/19	DRAWING CREATED FOR PDR #18004
REV.	INIT.	DATE
	JGK	8/13/19
ALL INFORMATION ILLUSTRATED IS THE PROPERTY OF "CONXALL CORPORATION". UNAUTHORIZED DUPLICATION OR DISTRIBUTION OF THIS DOCUMENT IS PROHIBITED.		DESCRIPTION
ALL UNITS ARE IN FEET, INCHES, FRACTION OF INCHES AND DECIMALS.		TITLE:
APPROVED BY:		PANEL MOUNT ASSEMBLY
SCALE	SIZE	SHEET
NTS	B	1 OF 1
FILE:	DIRECTORY:	PART NUMBER:
W17281-XSG-P-300	SLW	W17281-XSG-P-300
- CRITICAL CHARACTERISTIC FLAG PER SPEC. XXXX		REV
		A

DIMENSIONS IN BRACKETS [ ] ARE IN MILLIMETERS UNLESS INDICATED

**RoHS COMPLIANT**



601 E. WILDWOOD VILLA PARK, IL 60181  
TITLE: PANEL MOUNT ASSEMBLY  
(2-3) #20 SOCKET CONTACTS, PC TAIL  
INSTA-CLICK™ MICRO-CON-X  
STANDARD PRODUCT

# Mouser Electronics

Authorized Distributor

Click to View Pricing, Inventory, Delivery & Lifecycle Information:

[Switchcraft:](#)

[W17281-3SG-P-300](#) [W17281-2SG-P-3ES](#) [W17281-3SG-P-3ES](#) [W17281-2SG-P-300](#)