

Han HighTemp 6B-HSM-SL-C-2xM20

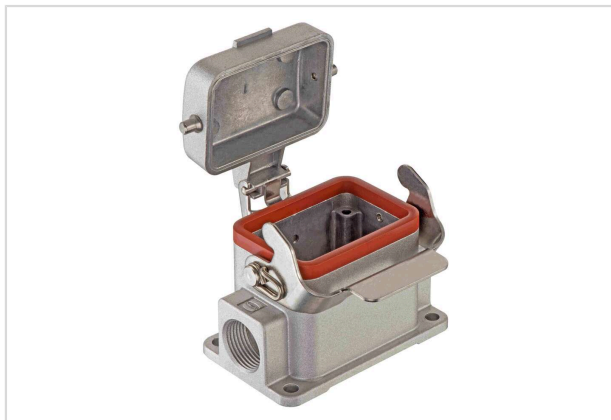


Image is for illustration purposes only. Please refer to product description.

Part number	19 62 806 2295
Specification	Han HighTemp 6B-HSM-SL-C-2xM20
HARTING eCatalogue	https://b2b.harting.com/19628062295

Identification

Category	Hoods/Housings
Series of hoods/housings	Han® High Temp
Type of hood/housing	Surface mounted housing
Description of hood/housing	With metal cover
Type	Low construction

Version

Size	6 B
Version	Side entry
Cable entry	2x M20
Locking type	Single locking lever

Technical characteristics

Limiting temperature	-40 ... +200 °C With Han® High Temp components
Note on the limiting temperature	For use as a connector according to IEC 61984.
Degree of protection acc. to IEC 60529	IP65

Material properties

Material (hood/housing)	Aluminium die-cast
Surface (hood/housing)	Uncoated
Colour (hood/housing)	Unpainted
Material (seal)	FPM
Colour (seal)	Red



Pushing Performance
Since 1945

Material properties

Material (locking)	Stainless steel
RoHS	compliant
ELV status	compliant
China RoHS	e
REACH Annex XVII substances	Not contained
REACH ANNEX XIV substances	Not contained
REACH SVHC substances	Not contained
California Proposition 65 substances	Yes
California Proposition 65 substances	Nickel

Commercial data

Packaging size	1
Net weight	237 g
Country of origin	Germany
European customs tariff number	85389099
GTIN	5713140132665
ETIM	EC000437
eCl@ss	27440202 Shell for industrial connectors