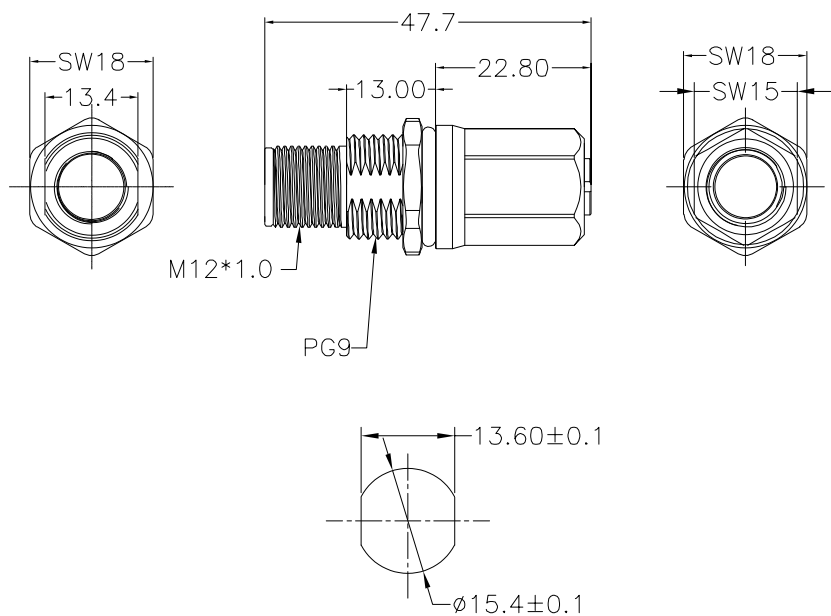


DESCRIPTION: M12 // STRAIGHT ADAPTER // (1X) MALE // (1X) FEMALE // WIRED THROUGH 1 TO 1



RECOMMENDED PANEL CUT-OUT

MALE

A04	A05	A08	D04	B05

FEMALE

A04	A05	A08	D04	B05

NOTE:

MATERIAL	
M12 INSULATOR	PA66, UL94V-0, BLACK
SHELL	NICKEL PLATED BRASS
CONTACT	GOLD FLASH PLATED BRASS
NUT	NICKEL PLATED BRASS
O-RING	FKM, GREEN
ELECTRICAL	
RATED CURRENT	2A(8P) / 4A(4/5P)
VOLTAGE	30V(8P) / 60V(5P) / 250V(4P)
INSULATOR RESISTANCE	100 MOhms MIN.
CONTACT RESISTANCE	10 mOhms MAX.
MATING CYCLES	100 CYCLES MIN
ENVIRONMENT	
OPERATION TEMPERATURE	-40°C TO +85°C
IP RATING	IP67 (UNCOUPLED & COUPLED)
RECOMMENDED TORQUE	0.4Nm TO 0.8Nm

SERIES	S58-YYY-MFR001
CONTACT ARRANGEMENT	
A04 = (2X) 4P A-CODE	
A05 = (2X) 5P A-CODE	
A08 = (2X) 8P A-CODE	
D04 = (2X) 4P D-CODE	
B05 = (2X) 5P B-CODE	
GENDER	
MF = MALE / FEMALE	
CONTACT PLATING	
1 = GOLD FLASH	

RoHS COMPLIANT



THESE DRAWINGS AND SPECIFICATIONS ARE THE PROPERTY OF NorComp AND SHALL NOT BE REPRODUCED, COPIED OR USED AS THE BASIS FOR THE MANUFACTURE OR SALE OF APPARATUS WITHOUT WRITTEN PERMISSION.	DRAWN: J. KADEL
	DATE: 12/20/2021

TOLERANCES
.x ±0.5
.xx ±0.2
ANGULAR ±1°

UNITS = mm

DO NOT SCALE FROM DRAWING

NorComp

SCALE: NTS	SHEET 1 OF 1	REV 2
DWG NO.	S58-YYY-MFR001	

Mouser Electronics

Authorized Distributor

Click to View Pricing, Inventory, Delivery & Lifecycle Information:

[NorComp:](#)

[S58-A04-MFR001](#) [S58-A05-MFR001](#) [S58-A08-MFR001](#) [S58-B05-MFR001](#) [S58-D04-MFR001](#)