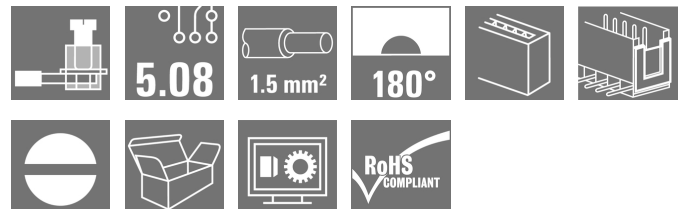


**OMNIMATE Signal - series BL/SL 5.08  
SLS 5.08/04/180TB RF15 SN OR BX**

**Weidmüller Interface GmbH & Co. KG**  
 Klingenbergstraße 16  
 D-32758 Detmold  
 Germany  
 Fon: +49 5231 14-0  
 Fax: +49 5231 14-292083  
 www.weidmueller.com

**Product image**


Similar to illustration

Male plugs with clamping-yoke screw wire-connect system. With clip-on feet for attaching the male plugs on rail. The male plugs provide space for labelling and can be coded.

**General ordering data**

Type	SLS 5.08/04/180TB RF15 SN OR BX
Order No.	<a href="#">1846050000</a>
Version	PCB plug-in connector, male plug, 5.08 mm, No. of poles: 4, 180°, Clamping yoke connection, Clamping range, max. : 3.31 mm², Box
GTIN (EAN)	4032248362332
Qty.	20 pc(s).
Product data	IEC: 400 V / 21.5 A / 0.2 - 2.5 mm² UL: 300 V / 14 A / AWG 26 - AWG 12
Packaging	Box

**OMNIMATE Signal - series BL/SL 5.08**  
**SLS 5.08/04/180TB RF15 SN OR BX**

**Weidmüller Interface GmbH & Co. KG**  
 Klingenbergstraße 16  
 D-32758 Detmold  
 Germany  
 Fon: +49 5231 14-0  
 Fax: +49 5231 14-292083  
 www.weidmueller.com

**Technical data**
**Dimensions and weights**

Height	30 mm	Height (inches)	1.181 inch
Depth	39.4 mm	Depth (inches)	1.551 inch
Net weight	11 g		

**System parameters**

Product family	OMNIMATE Signal - series BL/SL 5.08	Type of connection	Field connection
Wire connection method	Clamping yoke connection	Pitch in mm (P)	5.08 mm
Pitch in inches (P)	0.2 inch	Conductor outlet direction	180°
No. of poles	4	L1 in mm	15.24 mm
L1 in inches	0.6 inch	Number of rows	1
Pin series quantity	1	Touch-safe protection acc. to DIN VDE 57 106	Finger-safe plugged/ back-of-hand-safe unplugged
Stripping length	7 mm	Tightening torque, min.	0.4 Nm
Tightening torque, max.	0.5 Nm	Screwdriver blade	0.6 x 3.5
Screwdriver blade standard	DIN 5264	Plugging cycles	25

**Material data**

Insulating material	PBT	Colour	Orange
Colour chart (similar)	RAL 2000	Insulating material group	IIIa
CTI	≥ 200	Insulation resistance	≥ 10 <sup>8</sup> Ω
UL 94 flammability rating	V-0	Contact material	CuSn
Contact surface	tinned	Layer structure of plug contact	4-8 µm Sn hot-dip tinned
Storage temperature, min.	-25 °C	Storage temperature, max.	55 °C
Max. relative humidity during storage	80 %		

**Conductors suitable for connection**

Clamping range, min.	0.13 mm <sup>2</sup>	Clamping range, max.	3.31 mm <sup>2</sup>
Wire connection cross section AWG, min.	AWG 26	Wire connection cross section AWG, max.	AWG 12
Solid, min. H05(07) V-U	0.2 mm <sup>2</sup>	Solid, max. H05(07) V-U	2.5 mm <sup>2</sup>
Flexible, min. H05(07) V-K	0.2 mm <sup>2</sup>	Flexible, max. H05(07) V-K	2.5 mm <sup>2</sup>
w. plastic collar ferrule, DIN 46228 pt 4, min.	0.2 mm <sup>2</sup>	w. plastic collar ferrule, DIN 46228 pt 4, max.	2.5 mm <sup>2</sup>
w. wire end ferrule, DIN 46228 pt 1, min.	0.2 mm <sup>2</sup>	w. wire end ferrule, DIN 46228 pt 1, max.	2.5 mm <sup>2</sup>

**Rated data acc. to IEC**

tested acc. to standard	IEC 60664-1, IEC 61984	Rated current, min. no. of poles (Tu=20°C)	21.5 A
Rated current, max. no. of poles (Tu=20°C)	16 A	Rated current, min. no. of poles (Tu=40°C)	18 A
Rated current, max. no. of poles (Tu=40°C)	14 A	Rated voltage for surge voltage class / pollution degree II/2	400 V
Rated voltage for surge voltage class / pollution degree III/2	320 V	Rated voltage for surge voltage class / pollution degree III/3	250 V
Rated impulse voltage for surge voltage class/ pollution degree II/2	4 kV	Rated impulse voltage for surge voltage class/ pollution degree III/2	4 kV
Rated impulse voltage for surge voltage class/ contamination degree III/3	4 kV		


**OMNIMATE Signal - series BL/SL 5.08**  
**SLS 5.08/04/180TB RF15 SN OR BX**

**Weidmüller Interface GmbH & Co. KG**  
 Klingenbergstraße 16  
 D-32758 Detmold  
 Germany  
 Fon: +49 5231 14-0  
 Fax: +49 5231 14-292083  
 www.weidmueller.com

**Technical data**
**Rated data acc. to CSA**

Rated voltage (Use group B)	300 V	Rated voltage (use group D)	300 V
Rated current (use group B)	15 A	Rated current (use group D)	10 A
Wire cross-section, AWG, min.	AWG 26	Wire cross-section, AWG, max.	AWG 12

**Rated data acc. to UL 1059**

Institute (UR)		Certificate No. (UR)	E60693
Rated voltage (use group B)	300 V	Rated voltage (use group D)	300 V
Rated current (use group B)	14 A	Rated current (use group D)	10 A
Wire cross-section, AWG, min.	AWG 26	Wire cross-section, AWG, max.	AWG 12
Reference to approval values	Specifications are maximum values, details - see approval certificate.		

**Packaging**

Packaging	Box	VPE length	65 mm
VPE width	105 mm	VPE height	130 mm

**Classifications**

ETIM 3.0	EC001284	ETIM 4.0	EC002637
ETIM 5.0	EC002637	ETIM 6.0	EC002637
UNSPSC	30-21-18-10	eClass 5.1	27-26-07-04
eClass 6.2	27-26-07-04	eClass 7.1	27-44-04-02
eClass 8.1	27-44-04-02	eClass 9.0	27-44-04-02
eClass 9.1	27-44-04-02		

**Notes**

Notes	<ul style="list-style-type: none"> <li>• Additional colours on request</li> <li>• Rated current related to rated cross-section &amp; min. No. of poles.</li> <li>• Wire end ferrule without plastic collar to DIN 46228/1</li> <li>• Wire end ferrule with plastic collar to DIN 46228/4</li> <li>• P on drawing = pitch</li> <li>• Rated data refer only to the component itself. Clearance and creepage distances to other components are to be designed in accordance with the relevant application standards.</li> </ul>
IPC conformity	Conformity: The products are developed, manufactured and delivered according international recognized standards and norms and comply with the assured properties in the data sheet resp. fulfill decorative properties in accordance with IPC-A-610 "Class 2". Further claims on the products can be evaluated on request.

## OMNIMATE Signal - series BL/SL 5.08 SLS 5.08/04/180TB RF15 SN OR BX

**Weidmüller Interface GmbH & Co. KG**  
Klingenbergstraße 16  
D-32758 Detmold  
Germany  
Fon: +49 5231 14-0  
Fax: +49 5231 14-292083  
[www.weidmueller.com](http://www.weidmueller.com)

# Technical data

## Approvals

Approvals



ROHS

Conform

## Downloads

Approval/Certificate/Document of  
Conformity

[Declaration of the Manufacturer](#)

Brochure/Catalogue

[FL DRIVES EN](#)  
[MB DEVICE MANUF. EN](#)  
[FL DRIVES DE](#)  
[CAT 2 PORTFOLIOGUIDE EN](#)  
[FL BUILDING SAFETY EN](#)  
[FL APPL LED LIGHTING EN](#)  
[FL INDUSTR.CONTROLS EN](#)  
[FL MACHINE SAFETY EN](#)  
[FL HEATING ELECTR EN](#)  
[FL APPL INVERTER EN](#)  
[FL\\_BASE\\_STATION\\_EN](#)  
[FL ELEVATOR EN](#)  
[FL POWER SUPPLY EN](#)  
[FL 72H SAMPLE SER EN](#)  
[PO OMNIMATE EN](#)

Engineering Data

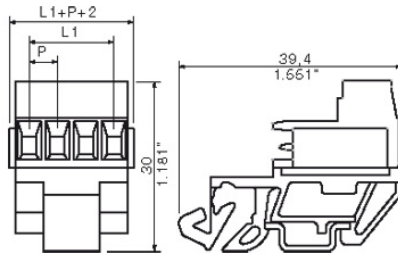
[WSCAD](#)

## OMNIMATE Signal - series BL/SL 5.08 SLS 5.08/04/180TB RF15 SN OR BX

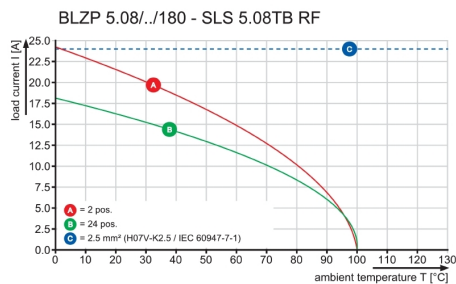
**Weidmüller Interface GmbH & Co. KG**  
Klingenbergstraße 16  
D-32758 Detmold  
Germany  
Fon: +49 5231 14-0  
Fax: +49 5231 14-292083  
[www.weidmueller.com](http://www.weidmueller.com)

# Drawings

## Dimensional drawing



## Graph



# OMNIMATE Signal - series BL/SL 5.08

## SLS 5.08/04/180TB RF15 SN OR BX

**Weidmüller Interface GmbH & Co. KG**  
 Klingenbergstraße 16  
 D-32758 Detmold  
 Germany  
 Fon: +49 5231 14-0  
 Fax: +49 5231 14-292083  
 www.weidmueller.com

## Mating connector (fully pluggable)

### BLL 5.08/180B



Female header for PCB mounting. The solder pin length is optimised for wave flow soldering.

#### General ordering data

Type	Order No.	Version	GTIN (EAN)	Qty.	Product data	Packaging
BLL	<a href="#">1682750000</a>	PCB plug-in connector,	4008190474515	78 pc(s).	IEC: 400 V / 23 A	Box
5.08/04/180B		female header, Dovetails for			UL: 300 V / 15 A	
3.2SN OR BX		fixing blocks, THT solder				
		connection, 5.08 mm, No.				
		of poles: 4, 180°, Solder pin				
		length (l): 3.2 mm, tinned,				
		Orange, Box				

### BLF 5.08HC/270 SN



Just as reliable as the millionfold proven original and featuring innovative details:  
 The BLF 5.08HC PUSH IN version of the BLZP 5.08HC female connector is not only different in terms of connection system; it also has a more compact design. Weidmüller's innovative PUSH IN spring connection system stands for the future of easy and tool-free wire connection. HC = High Current.  
 In terms of versatility, the BLF 5.08HC offers just as much as the version which served as a model:

- 3 tested-and-proven wire outlet directions provide the usual flexibility for application-specific design
- 4 flange variations and the patented release latch allow the locking concept to be based on the requirements of the user
- Use the BLF 5.08HC and SL 5.08HC plug combination to reach the max. rated specifications

#### General ordering data

Type	Order No.	Version	GTIN (EAN)	Qty.	Product data	Packaging
BLF	<a href="#">1982720000</a>	PCB plug-in connector,	4032248686810	90 pc(s).	IEC: 400 V / 24 A / 0.2 - 2.5 mm <sup>2</sup>	Box
5.08HC/04/270		female plug, 5.08 mm, No.			UL: 300 V / 18.5 A / AWG 26 - AWG	
SN OR BX		of poles: 4, 270°, PUSH			12	
		IN, Spring connection,				
		Clamping range, max. :				
		3.31 mm <sup>2</sup> , Box				
2016-04-08T08:00:00Z	<a href="#">1981950000</a>	PCB plug-in	4032248684649	90 pc(s).	IEC:	
		connector,			400	
		female plug,			V /	
		5.08 mm, No. of			24	

**OMNIMATE Signal - series BL/SL 5.08**  
**SLS 5.08/04/180TB RF15 SN OR BX**

**Weidmüller Interface GmbH & Co. KG**  
 Klingenbergstraße 16  
 D-32758 Detmold  
 Germany  
 Fon: +49 5231 14-0  
 Fax: +49 5231 14-292083  
 www.weidmüller.com

**Mating connector (fully pluggable)**

poles: 4, 270°,	A /
PUSH IN, Spring	0.2
connection,	-
Clamping range,	2.5
max. : 3.31 mm²,	mm²
Box	UL:
	300
	V /
	18.5
	A /
	AWG
	26
	-
	AWG
	12

**BLF 5.08HC/180 SN**


Just as reliable as the millionfold proven original and featuring innovative details:

The BLF 5.08HC PUSH IN version of the BLZP 5.08HC female connector is not only different in terms of connection system; it also has a more compact design. Weidmüller's innovative PUSH IN spring connection system stands for the future of easy and tool-free wire connection. HC = High Current.

In terms of versatility, the BLF 5.08HC offers just as much as the version which served as a model:

- 3 tested-and-proven wire outlet directions provide the usual flexibility for application-specific design
- 4 flange variations and the patented release latch allow the locking concept to be based on the requirements of the user
- Use the BLF 5.08HC and SL 5.08HC plug combination to reach the max. rated specifications

**General ordering data**

Type	Order No.	Version	GTIN (EAN)	Qty.	Product data	Packaging
BLF	<a href="#">1013450000</a>	PCB plug-in connector,	4032248721603	90 pc(s).	IEC: 400 V / 24 A / 0.2 - 2.5 mm²	Box
5.08HC/04/180		female plug, 5.08 mm, No.			UL: 300 V / 18.5 A / AWG 26 - AWG	
SN BK BX		of poles: 4, 180°, PUSH			12	
		IN, Spring connection,				
		Clamping range, max. :				
		3.31 mm², Box				
BLF	<a href="#">1013710000</a>	PCB plug-in connector,	4032248721825	90 pc(s).	IEC: 400 V / 24 A / 0.2 - 2.5 mm²	Box
5.08HC/04/180		female plug, 5.08 mm, No.			UL: 300 V / 18.5 A / AWG 26 - AWG	
SN OR BX		of poles: 4, 180°, PUSH			12	
		IN, Spring connection,				
		Clamping range, max. :				
		3.31 mm², Box				

## OMNIMATE Signal - series BL/SL 5.08 SLS 5.08/04/180TB RF15 SN OR BX

**Weidmüller Interface GmbH & Co. KG**  
Klingenbergstraße 16  
D-32758 Detmold  
Germany  
Fon: +49 5231 14-0  
Fax: +49 5231 14-292083  
www.weidmueller.com

### Mating connector (fully pluggable)

#### BLZP 5.08HC/270 SN



Female plugs with clamping-yoke connection for connecting wires with a right-angle (90° or 270°) outlet direction. The female connectors provide space for labelling and can be coded. Fastened by means of a flange or release latch. They also provide an integrated plus/minus screw, protection against faulty insertion of the wire, and they are delivered with open clamping yokes. HC = High Current.

#### General ordering data

Type	Order No.	Version	GTIN (EAN)	Qty.	Product data	Packaging
BLZP	<a href="#">1948810000</a>	PCB plug-in connector,	4032248626267	90 pc(s).	IEC: 400 V / 23 A / 0.2 - 4 mm <sup>2</sup>	Box
5.08HC/04/270		female plug, 5.08 mm, No.			UL: 300 V / 20 A / AWG 26 - AWG 12	
SN OR BX		of poles: 4, 270°, Clamping yoke connection, Clamping range, max.: 4 mm <sup>2</sup> , Box				

#### BLZP 5.08HC/225 SN



Clamping-yoke connection with right-angled (90° or 270°) or angled (225°) outlet direction. The female connectors provide space for labelling and can be coded. Fastened by means of a flange or release latch. They also provide an integrated plus/minus screw, protection against faulty insertion of the wire, and they are delivered with open clamping yokes. HC = High Current.

#### General ordering data

Type	Order No.	Version	GTIN (EAN)	Qty.	Product data	Packaging
BLZP	<a href="#">1946580000</a>	PCB plug-in connector,	4032248622351	90 pc(s).	IEC: 400 V / 17.5 A / 0.2 - 4 mm <sup>2</sup>	Box
5.08HC/04/225		female plug, 5.08 mm, No.			UL: 300 V / 15 A / AWG 26 - AWG 12	
SN BK BX		of poles: 4, 225°, Clamping yoke connection, Clamping range, max.: 4 mm <sup>2</sup> , Box				
BLZP	<a href="#">1946270000</a>	PCB plug-in connector,	4032248621842	90 pc(s).	IEC: 400 V / 17.5 A / 0.2 - 4 mm <sup>2</sup>	Box
5.08HC/04/225		female plug, 5.08 mm, No.			UL: 300 V / 15 A / AWG 26 - AWG 12	
SN OR BX		of poles: 4, 225°, Clamping yoke connection, Clamping range, max.: 4 mm <sup>2</sup> , Box				



# OMNIMATE Signal - series BL/SL 5.08

## SLS 5.08/04/180TB RF15 SN OR BX

**Weidmüller Interface GmbH & Co. KG**  
 Klingenbergstraße 16  
 D-32758 Detmold  
 Germany  
 Fon: +49 5231 14-0  
 Fax: +49 5231 14-292083  
 www.weidmueller.com

### Mating connector (fully pluggable)

#### BLL 5.08/180



Female header for PCB mounting. The solder pin length is optimised for wave flow soldering.

#### General ordering data

Type	Order No.	Version	GTIN (EAN)	Qty.	Product data	Packaging
BLL	<a href="#">1630730000</a>	PCB plug-in connector,	4008190204150	90 pc(s).	IEC: 400 V / 23 A	Box
5.08/04/180		female header, closed side,			UL: 300 V / 15 A	
3.2 SN OR BX		THT solder connection,				
		5.08 mm, No. of poles: 4,				
		180°, Solder pin length (l):				
		3.2 mm, tinned, Orange,				
		Box				

#### BLDT 5.08B



Female plugs with two clamping-yoke screw connections per pole for wire connections with 90° and 270° outlet directions. The female plugs provide space for labelling and can be coded.

#### General ordering data

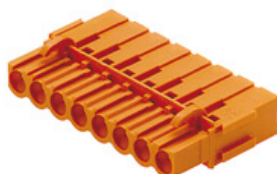
Type	Order No.	Version	GTIN (EAN)	Qty.	Product data	Packaging
BLDT	<a href="#">1651760000</a>	PCB plug-in connector,	4008190400446	70 pc(s).	IEC: 400 V / 14 A / 0.2 - 2.5 mm <sup>2</sup>	Box
5.08/04/-B		female plug, 5.08 mm, No.			UL: 300 V / 10 A / AWG 26 - AWG 12	
SN OR BX		of poles: 4, 180°, Clamping				
		yoke connection, Clamping				
		range, max. : 3.31 mm <sup>2</sup> ,				
		Box				
Discontinued	2014-05-20T00:00:00+02:00	BLDT 5.08/04/-B SN BK	<a href="#">1673800000</a>	PCB plug-in	4008190435530	70
		BX		connector, female		pc(s).
				plug, 5.08 mm,		
				No. of poles: 4,		
				180°, Clamping		
				yoke connection,		
				Clamping range,		
				max. : 3.31 mm <sup>2</sup> ,		
				Box		

## OMNIMATE Signal - series BL/SL 5.08 SLS 5.08/04/180TB RF15 SN OR BX

**Weidmüller Interface GmbH & Co. KG**  
Klingenbergstraße 16  
D-32758 Detmold  
Germany  
Fon: +49 5231 14-0  
Fax: +49 5231 14-292083  
www.weidmueller.com

### Mating connector (fully pluggable)

#### BLC 5.08BR



Female plugs with crimp wire connection system. The female plugs provide space for labelling and can be coded.

#### General ordering data

Type	Order No.	Version	GTIN (EAN)	Qty.	Product data	Packaging
BLC 5.08/04/180BR BK BX	<a href="#">1712130000</a>	PCB plug-in connector, female plug, 5.08 mm, No. of poles: 4, 180°, Crimp connection, Clamping range, max.: 2.5 mm <sup>2</sup> , Box	4008190935146	100 pc(s).	IEC: 400 V / 21 A UL: 300 V / 10 A / AWG 26 - AWG 14	Box
BLC 5.08/04/180BR OR BX	<a href="#">1649390000</a>	PCB plug-in connector, female plug, 5.08 mm, No. of poles: 4, 180°, Crimp connection, Clamping range, max.: 2.5 mm <sup>2</sup> , Box	4008190294502	100 pc(s).	IEC: 400 V / 21 A UL: 300 V / 10 A / AWG 26 - AWG 14	Box

#### BLZP 5.08HC/90 SN



Female plugs with clamping-yoke connection for connecting wires with a right-angle (90° or 270°) outlet direction. The female connectors provide space for labelling and can be coded. Fastened by means of a flange or release latch. They also provide an integrated plus/minus screw, protection against faulty insertion of the wire, and they are delivered with open clamping yokes. HC = High Current.

#### General ordering data

Type	Order No.	Version	GTIN (EAN)	Qty.	Product data	Packaging
BLZP 5.08HC/04/90 SN OR BX	<a href="#">1948020000</a>	PCB plug-in connector, female plug, 5.08 mm, No. of poles: 4, 90°, Clamping yoke connection, Clamping range, max.: 4 mm <sup>2</sup> , Box	4032248624249	90 pc(s).	IEC: 400 V / 23 A / 0.2 - 4 mm <sup>2</sup> UL: 300 V / 20 A / AWG 26 - AWG 12	Box
BLZP 5.08HC/04/90 SN BK BX	<a href="#">1948260000</a>	PCB plug-in connector, female plug, 5.08 mm, No. of poles: 4, 90°, Clamping yoke connection, Clamping range, max.: 4 mm <sup>2</sup> , Box	4032248624782	90 pc(s).	IEC: 400 V / 23 A / 0.2 - 4 mm <sup>2</sup> UL: 300 V / 20 A / AWG 26 - AWG 12	Box

## OMNIMATE Signal - series BL/SL 5.08 SLS 5.08/04/180TB RF15 SN OR BX

**Weidmüller Interface GmbH & Co. KG**  
Klingenbergstraße 16  
D-32758 Detmold  
Germany  
Fon: +49 5231 14-0  
Fax: +49 5231 14-292083  
www.weidmueller.com

### Mating connector (fully pluggable)

#### BLZP 5.08HC/225B SN

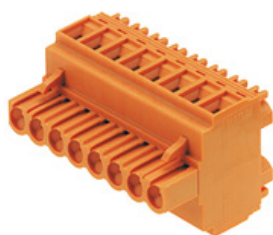


Clamping-yoke connection with right-angled (90° or 270°) or angled (225°) outlet direction. The female connectors provide space for labelling and can be coded. Fastened by means of a flange or release latch. They also provide an integrated plus/minus screw, protection against faulty insertion of the wire, and they are delivered with open clamping yokes. HC = High Current.

#### General ordering data

Delivery status Available until	Type	Order No.	Version	GTIN (EAN)	Qty.
Discontinued 2016-04-08T00:00:00+02:00	BLZP 5.08HC/04/225B SN BK BX	<a href="#">1946000000</a>	PCB plug-in connector, female plug, 5.08 mm, No. of poles: 4, 225°, Clamping yoke connection, Clamping range, max. : 4 mm², Box	4032248621521	78 pc(s).
BLZP 5.08HC/04/225B SN OR BX	PCB plug-in connector, female plug, 5.08 mm, No. of poles: 4, 225°, Clamping yoke connection, Clamping range, max. : 4 mm², Box	4032248621248	78 pc(s).	IEC: 400 V / 17.5 A / 0.2 - 4 mm² UL: 300 V / 15 A / AWG 26 - AWG 12	Box

#### BLDT 5.08



Female plugs with two clamping-yoke screw connections per pole for wire connections with 90° and 270° outlet directions. The female plugs provide space for labelling and can be coded.

#### General ordering data

Type	Order No.	Version	GTIN (EAN)	Qty.	Product data	Packaging
BLDT 5.08/04/- SN OR BX	<a href="#">1644750000</a>	PCB plug-in connector, female plug, 5.08 mm, No. of poles: 4, 180°, Clamping yoke connection, Clamping range, max. : 3.31 mm², Box	4008190283964	75 pc(s).	IEC: 400 V / 14 A / 0.2 - 2.5 mm² UL: 300 V / 10 A / AWG 26 - AWG 12	Box
BLDT 5.08/04/- SN BK BX	<a href="#">1660730000</a>	PCB plug-in connector, female plug, 5.08 mm, No. of poles: 4, 180°, Clamping yoke connection, Clamping	4008190417185	75 pc(s).	IEC: 400 V / 14 A / 0.2 - 2.5 mm² UL: 300 V / 10 A / AWG 26 - AWG 12	Box

## OMNIMATE Signal - series BL/SL 5.08 SLS 5.08/04/180TB RF15 SN OR BX

**Weidmüller Interface GmbH & Co. KG**  
Klingenbergstraße 16  
D-32758 Detmold  
Germany  
Fon: +49 5231 14-0  
Fax: +49 5231 14-292083  
www.weidmueller.com

### Mating connector (fully pluggable)

range, max.: 3.31 mm<sup>2</sup>,  
Box

#### BLL 5.08/90



Female header for PCB mounting. The solder pin length is optimised for wave flow soldering.

#### General ordering data

Type	Order No.	Version	GTIN (EAN)	Qty.	Product data	Packaging
BLL	<a href="#">1622960000</a>	PCB plug-in connector,	4008190194024	90 pc(s).	IEC: 400 V / 23 A	Box
5.08/04/90		female header, closed side,			UL: 300 V / 15 A	
3.2 SN OR BX		THT solder connection,				
		5.08 mm, No. of poles: 4,				
		90°, Solder pin length (l):				
		3.2 mm, tinned, Orange,				
		Box				

#### BLZP 5.08HC/180 SN



Female plug with clamping-yoke screw system for connecting wires with straight (180°) outlet direction. The female connectors provide space for labelling and can be coded. Fastened by means of a flange or release latch. They also provide an integrated plus/minus screw, protection against faulty insertion of the wire, and they are delivered with open clamping yokes. HC = High Current.

#### General ordering data

Type	Order No.	Version	GTIN (EAN)	Qty.	Product data	Packaging
BLZP	<a href="#">1943600000</a>	PCB plug-in connector,	4032248617593	90 pc(s).	IEC: 400 V / 23 A / 0.2 - 4 mm <sup>2</sup>	Box
5.08HC/04/180		female plug, 5.08 mm, No.			UL: 300 V / 20 A / AWG 26 - AWG 12	
SN OR BX		of poles: 4, 180°, Clamping				
		yoke connection, Clamping				
		range, max.: 4 mm <sup>2</sup> , Box				
BLZP	<a href="#">1943830000</a>	PCB plug-in connector,	4032248617869	90 pc(s).	IEC: 400 V / 23 A / 0.2 - 4 mm <sup>2</sup>	Box
5.08HC/04/180		female plug, 5.08 mm, No.			UL: 300 V / 20 A / AWG 26 - AWG 12	
SN BK BX		of poles: 4, 180°, Clamping				
		yoke connection, Clamping				
		range, max.: 4 mm <sup>2</sup> , Box				

## OMNIMATE Signal - series BL/SL 5.08 SLS 5.08/04/180TB RF15 SN OR BX

**Weidmüller Interface GmbH & Co. KG**  
Klingenbergstraße 16  
D-32758 Detmold  
Germany  
Fon: +49 5231 14-0  
Fax: +49 5231 14-292083  
www.weidmueller.com

### Mating connector (fully pluggable)

#### BLF 5.08HC/90 SN



Just as reliable as the millionfold proven original and featuring innovative details:

The BLF 5.08HC PUSH IN version of the BLZP 5.08HC female connector is not only different in terms of connection system; it also has a more compact design. Weidmüller's innovative PUSH IN spring connection system stands for the future of easy and tool-free wire connection. HC = High Current.

In terms of versatility, the BLF 5.08HC offers just as much as the version which served as a model:

- 3 tested-and-proven wire outlet directions provide the usual flexibility for application-specific design
- 4 flange variations and the patented release latch allow the locking concept to be based on the requirements of the user
- Use the BLF 5.08HC and SL 5.08HC plug combination to reach the max. rated specifications

#### General ordering data

Type	Order No.	Version	GTIN (EAN)	Qty.	Product data	Packaging
BLF 5.08HC/04/90 SN OR BX	<a href="#">1001550000</a>	PCB plug-in connector, female plug, 5.08 mm, No. of poles: 4, 90°, PUSH IN, Spring connection, Clamping range, max. : 3.31 mm², Box	4032248693351	90 pc(s).	IEC: 400 V / 24 A / 0.2 - 2.5 mm² UL: 300 V / 18.5 A / AWG 26 - AWG 12	Box
BLF 5.08HC/04/90 SN BK BX	<a href="#">1000050001</a>	PCB plug-in connector, female plug, 5.08 mm, No. of poles: 4, 90°, PUSH IN, Spring connection, Clamping range, max. : 3.31 mm², Box	4032248689989	90 pc(s).	IEC: 400 V / 24 A / 0.2 - 2.5 mm² UL: 300 V / 18.5 A / AWG 26 - AWG 12	Box

#### BLDF 5.08/180 SN



The powerful daisy-chain solution for high-performance signal bus applications is also suitable for 400V auxiliary power chains with 18.5A current-carrying capacity. The large clamping capacity (up to 2.5mm² wire cross-sections) is particularly beneficial for long bus cables or high currents because of the low voltage drop. Four flange variations, including the patented release latch, allow for user-friendly unplugging designs.

#### General ordering data

Type	Order No.	Version	GTIN (EAN)	Qty.	Product data	Packaging
BLDF 5.08/04/180 SN BK BX	<a href="#">1000880000</a>	PCB plug-in connector, female plug, 5.08 mm, No. of poles: 4, 180°, PUSH IN, Spring connection,	4032248817269	60 pc(s).	IEC: 400 V / 20.8 A / 0.2 - 2.5 mm² UL: 300 V / 18.5 A / AWG 12 - AWG 26	Box

## OMNIMATE Signal - series BL/SL 5.08 SLS 5.08/04/180TB RF15 SN OR BX

**Weidmüller Interface GmbH & Co. KG**  
Klingenbergstraße 16  
D-32758 Detmold  
Germany  
Fon: +49 5231 14-0  
Fax: +49 5231 14-292083  
www.weidmueller.com

### Mating connector (fully pluggable)

		Clamping range, max. : 3.31 mm <sup>2</sup> , Box	
BLDF	<a href="#">1001170000</a>	PCB plug-in connector, female plug, 5.08 mm, No. of poles: 4, 180°, PUSH IN, Spring connection, Clamping range, max. : 3.31 mm <sup>2</sup> , Box	4032248818075 60 pc(s). IEC: 400 V / 20.8 A / 0.2 - 2.5 mm <sup>2</sup> UL: 300 V / 18.5 A / AWG 12 - AWG 26
5.08/04/180			
SN OR BX			

### BLC 5.08R



Female plugs with crimp wire connection system. The female plugs provide space for labelling and can be coded.

### General ordering data

Type	Order No.	Version	GTIN (EAN)	Qty.	Product data	Packaging
BLC	<a href="#">1711980000</a>	PCB plug-in connector, female plug, 5.08 mm, No. of poles: 4, 180°, Crimp connection, Clamping range, max. : 2.5 mm <sup>2</sup> , Box	4008190934996	100 pc(s).	IEC: 400 V / 21 A UL: 300 V / 10 A / AWG 26 - AWG 14	Box
5.08/04/180R						
BK BX						
BLC	<a href="#">1610510000</a>	PCB plug-in connector, female plug, 5.08 mm, No. of poles: 4, 180°, Crimp connection, Clamping range, max. : 2.5 mm <sup>2</sup> , Box	4008190065102	100 pc(s).	IEC: 400 V / 21 A UL: 300 V / 10 A / AWG 26 - AWG 14	Box
5.08/04/180R						
OR BX						

## OMNIMATE Signal - series BL/SL 5.08 SLS 5.08/04/180TB RF15 SN OR BX

**Weidmüller Interface GmbH & Co. KG**  
Klingenbergstraße 16  
D-32758 Detmold  
Germany  
Fon: +49 5231 14-0  
Fax: +49 5231 14-292083  
www.weidmueller.com

## Accessories

### Blocks for PCB mounting



#### Minor component, major effect:

Clip-on attachment elements increase the mechanical resilience of the whole plug connection by

- securing the male connectors to the circuit board
- providing a vibration-proof connection between the sockets and the male connectors

Clip-on or pre-assembled - always the right solution:

- Hard-wearing, precise fitting dovetail joint
- Hard-wearing metal threaded inserts
- Suitable for all outlet directions

Maximum stability, minimum effort:

- Extremely resilient for frequent fastening operations
- Complete set for easy selection

The result: soldering points, contacts and overall module are more resilient against mechanical stress such as vibrations and tensile loads.

### General ordering data

Type	Order No.	Version	GTIN (EAN)	Qty.	Product data	Packaging
SLA BB4 OR	<a href="#">1571720000</a>	PCB plug-in connector, Accessories, Mounting block, Orange, No. of poles: 1	4008190098995	50 pc(s).	UL:	Box
SLA BB8 RH OR	<a href="#">1446060000</a>	PCB plug-in connector, Accessories, Mounting block, Orange, No. of poles: 1	4008190084585	20 pc(s).	UL:	Box

## OMNIMATE Signal - series BL/SL 5.08 SLS 5.08/04/180TB RF15 SN OR BX

**Weidmüller Interface GmbH & Co. KG**  
Klingenbergstraße 16  
D-32758 Detmold  
Germany  
Fon: +49 5231 14-0  
Fax: +49 5231 14-292083  
www.weidmueller.com

## Accessories

### Additional accessories



#### No task is too small when creating the perfect solution. br />

Connections form just one part of the overall process. Small details are often the key to the perfect solution in applications where potentials are tested, grouped or even isolated.

A system is not a system without small but useful details:

- Test plugs - ensure reliable pick-up from diagnostic sockets
- Cross-connectors - ensure a stable electrical distribution contact directly at the connection
- Compartment partition elements - divide a large number of male connectors into several separate socket connector channels
- Locks and clips - optional vibration-resistant clip-on connection or mounting for male and female connectors

In tandem with the manufacturing process and application - more accessories = smaller workload

### General ordering data

Type	Order No.	Version	GTIN (EAN)	Qty.	Product data	Packaging
SL AT SW	<a href="#">1770240000</a>	PCB plug-in connector, Accessories, Partition element, Black, No. of poles: 1	4032248117710	100 pc(s).	UL:	Box
SL AT OR	<a href="#">1598300000</a>	PCB plug-in connector, Accessories, Partition element, Orange, No. of poles: 1	4008190189266	100 pc(s).	UL:	Box

### Coding elements



#### Only connects what is supposed to be connected: the right connection at the right place.

Coding elements and locking devices clearly assign connecting elements during the manufacturing process and operation

The coding elements and locking devices are inserted prior to assembly or during the cable assembly phase. The Weidmüller alternative: configure online using the variant configurator to precode prior to delivery. Incorrect assembly on the circuit board and incorrect plugging of connecting elements is no longer possible. The advantage: no troubleshooting during manufacture and no operational errors by the user.

### General ordering data

Type	Order No.	Version	GTIN (EAN)	Qty.	Product data	Packaging
BLZ/SL KO BK BX	<a href="#">1545710000</a>	PCB plug-in connector, Accessories, Coding	4008190087142	50 pc(s).	UL:	Box



**OMNIMATE Signal - series BL/SL 5.08**  
**SLS 5.08/04/180TB RF15 SN OR BX**

**Weidmüller Interface GmbH & Co. KG**  
Klingenbergstraße 16  
D-32758 Detmold  
Germany  
Fon: +49 5231 14-0  
Fax: +49 5231 14-292083  
[www.weidmueller.com](http://www.weidmueller.com)

**Accessories**

	element, Black, No. of poles: 1			
BLZ/SL KO OR <a href="#">1573010000</a> BX	PCB plug-in connector, Accessories, Coding element, Orange, No. of poles: 1	4008190048396 100 pc(s).	UL:	Box