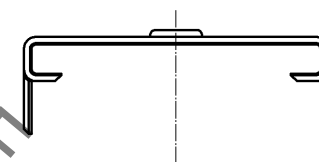
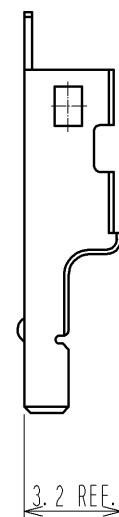
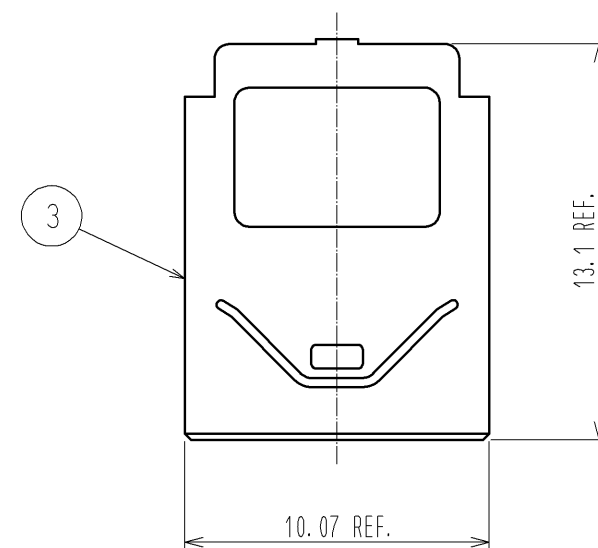
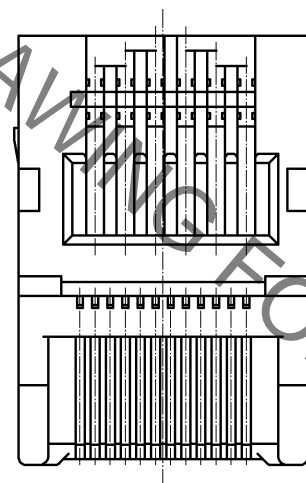
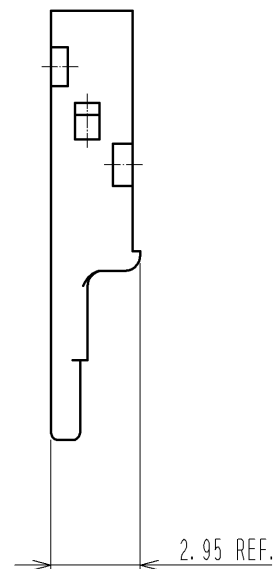
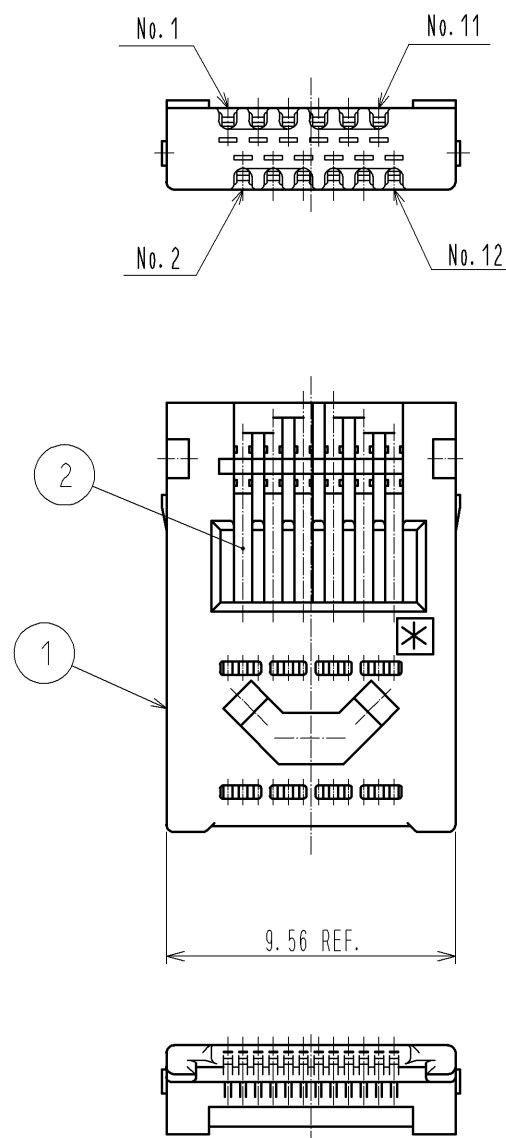


Jun.1.2019 Copyright 2019 HIROSE ELECTRIC CO., LTD. All Rights Reserved.  
In case of consideration for using Automotive equipment / device which demand high reliability, kindly contact our sales window correspondents.



- Notes) 1.Cable is to be fixed firmly by a bushing or one-piece molded cable bushing, and use non color migrant resin as material for bushing.
- 2.Components are packed separately by the types of parts.
- 3.Procedure of connecting wires is shown in ATAD-E2746 or ATAD-E2444.

2	Copper alloy	Contact area: Selective gold plating (0.3μm) Terminal area: Selective gold flush plating			
1	Polyamide	Black UL94V-0	3	Stainless steel	
NO.	MATERIAL	FINISH , REMARKS	NO.	MATERIAL	FINISH , REMARKS
UNITS mm		SCALE 4 : 1	COUNT 	DESCRIPTION OF REVISIONS	DESIGNED
HIROSE ELECTRIC CO., LTD.		APPROVED : RI. TAKAYASU	12.12.19	DRAWING NO.	EDC3-125471-01
		CHECKED : NM. NISHIMATSU	12.12.19	PART NO.	LX40-12P(02)
		DESIGNED : P. EKSOURIYA	12.12.19	CODE NO.	CL245-0019-6-02
		DRAWN : P. EKSOURIYA	12.12.17		