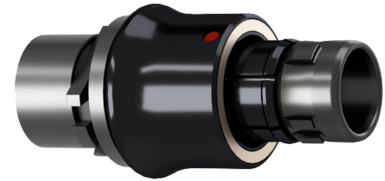


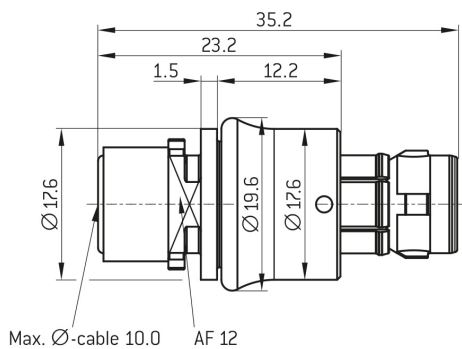
ODU AMC[®] PUSH-PULL PLUG, SIZE 2, IP6K8 / IP6K9K, 26 POS., A (LIGHT BROWN)



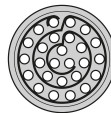
- **Part number** S12YAR-P26XCD0-0000
- **Type of connector** Push-Pull Plug
- **Size** 2
- **Number of contacts** 26
- **Keying** A (light brown)
- **Cable diameter** 10.0 mm



DIMENSIONS:



POSITIONS: 26 positions



CODING: A



Contact Insert Description

Number of contacts	26
Contact type	Pins
Contact diameter	0.5 mm
Insulator material	PEEK
Wire cross section	26 AWG
Termination type	Solder
Termination diameter	0.65 mm

ODU AMC[®] PUSH-PULL PLUG, SIZE 2, IP6K8 / IP6K9K, 26 POS., A (LIGHT BROWN)



Technical information

Nominal current single contact	5 A	IEC 60512-5-2:2002
Test voltage	0.9 kV AC	EIA-364-20F:2019-02

All shown connectors are rated to safety extra low voltage (SELV) less than 50 V AC / 75 V DC, according to IEC 61140:2016, Protection against electric shock - Common aspects for installation and equipment (VDE 0140-1:2016). In case that other standards rule a specific use of the connector, the application specific safety criteria shall be considered first. In this context, lower voltage ratings may be valid. For operating voltages above 50 V AC / 120 V DC, life is in danger!

Mechanical and Environmental data

Degree of protection*	IP6K8 / IP6K9K
Operating temperature	-51°C up to +125°C
Mating cycles	5000
*mated condition	

Material and Surface Treatments

Housing	Al-alloy with ruthenium finish
Contact	Cu-alloy with gold finish

General information

All shown connectors are connectors without breaking capacity (COC) according to IEC 61984:2008 (VDE 0627:2009).

These ODU specific connectors can transmit common data transmission protocols such as USB[®] 2.0, USB[®] 3.2 Gen1, CAT 5, CAT 6A and Ethernet, but they are not USB[®]-, CAT- and Ethernet-standard connectors

ODU AMC[®] is UL-listed under file E110586.