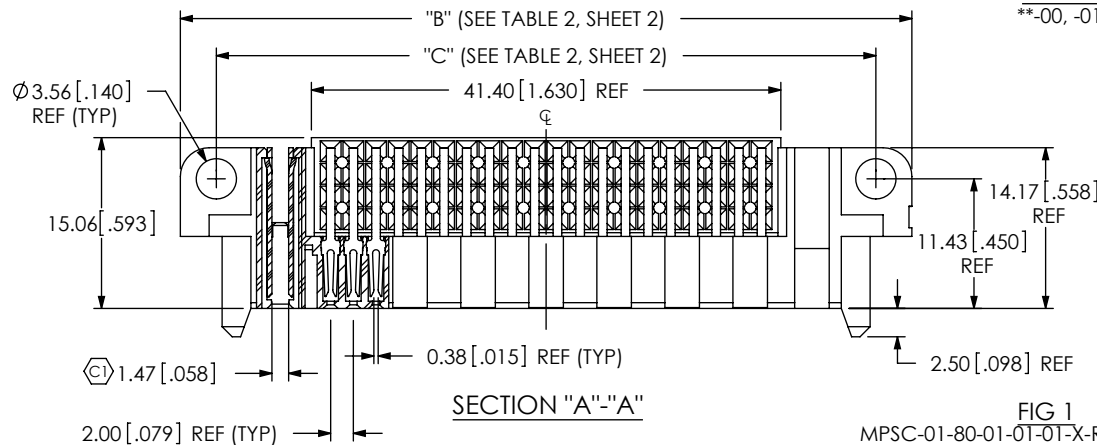


DO NOT
SCALE FROM
THIS PRINT

DESIGNED & DIMENSIONED
IN MILLIMETERS



* POWER PINS (PER END)
**-00, -01, -02,

* SIGNAL PINS
-80 (4 X 20)
-24 (4 X 6)
**-20 (4 X 5)
-16 (4 X 4)
**-12 (4 X 3)

* POWER PINS (PER END)
-01, -02, **-03, **-04
**-H1, **H2, **H3, **H4
(-03 & -04 ONLY AVAILABLE
WITH -00 ON OPPOSITE END)
(-HX INDICATES HOT SWAP
OPTION)

LEAD STYLE
-01
-02

OPTION
-SD: SCREW DOWN
(SEE FIG 1)
-LC: LOCKING CLIP
(USE LC-07-TM)
(SEE FIG 2, SHT 2)
(-SD OR -LC MUST BE
SELECTED)

RIGHT ANGLE

PLATING SPECIFICATION
(VALUES GIVEN ARE IN
MICRO-INCHES)
(SEE NOTE 9 & TABLE 3)
-L: LIGHT SELECTIVE,
10 AU / 50 NI MIN ON
CONTACT, MATTE TIN TAIL
-T: MATTE TIN CONTACT
AND TAIL

TAIL LENGTH
-01: FOR 1.57 [.062] THICK PCB
*** -02: FOR 2.36 [.093] THICK PCB
-03: FOR 2.36 [.093] THICK PCB

* = SEE TABLE 2 FOR AVAILABLE COMBINATIONS
** = NOT RELEASED
*** = EXISTING CUSTOMERS ONLY

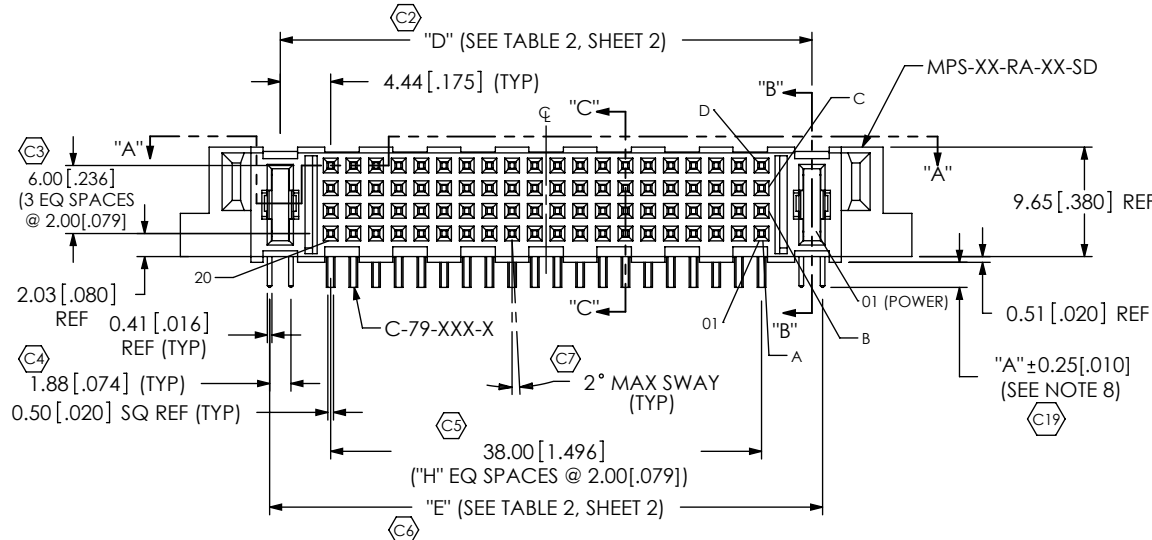
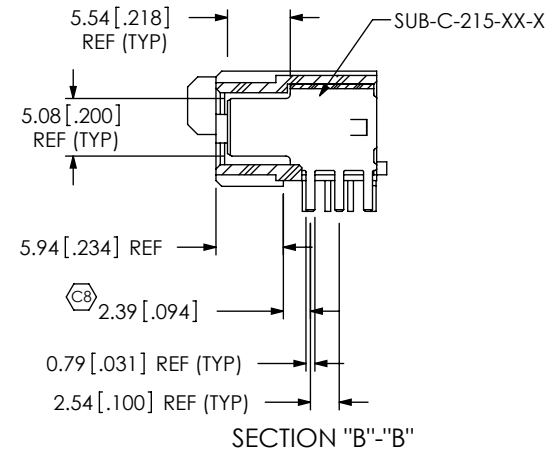
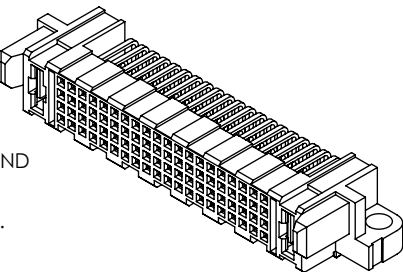


TABLE 1

PART NUMBER	BODY	POWER CONTACT SUB-ASSEMBLY	SIGNAL CONTACT				"A"
			CONTACT 1	CONTACT 2	CONTACT 3	CONTACT 4	
MPSC-XX-XX-XX-01-01-X-RA-XX	MPS-XX-RA-XX-XX	SUB-C-215-01-X	C-79-02-L	C-79-02-L	C-79-23B-L	C-79-23B-L	2.20 [.087]
MPSC-XX-XX-XX-01-03-X-RA-XX		SUB-C-215-04-X	C-79-02-L	C-79-02-L	C-79-23B-L	C-79-23B-L	3.00 [.118]

NOTES:

1. (C) REPRESENTS A CRITICAL DIMENSION.
2. BURR ALLOWANCE: 0.038 [.0015] MAX.
3. MINIMUM PUSHOUT FORCE: 4.45N [1.0 LB].
4. PARTS TO BE PACKAGED IN TRAYS.
5. BOW ALLOWED AT 0.075MM [.0030] / 25.0MM [.98].
6. -HS OPTION MUST HAVE A SUB-C-215-XX-X IN POWER POSITION 1; ALL OTHER POSITIONS MUST HAVE SUB-C-303-XX-X.
7. POSITION ONE MARK ON TRAYS DOES NOT CORRESPOND W/ POSITION 1 LOCATION ON PARTS.
8. THIS DIMENSION APPLIES TO POWER AND SIGNAL PINS.
9. PLATING SPECIFICATIONS APPLY TO POWER PINS ONLY. SIGNAL PINS TO HAVE LIGHT GOLD CONTACT AREA AND MATTE TIN TAIL FOR BOTH -L AND -T OPTIONS.



UNLESS OTHERWISE SPECIFIED,
DIMENSIONS ARE IN MILLIMETERS.
TOLERANCES ARE:

DECIMALS ANGLES
.X: ±0.3 [.01]
.XX: ±0.13 [.005]
.XXX: ±0.051 [.0020]

PROPRIETARY NOTE

THIS DOCUMENT CONTAINS INFORMATION
CONFIDENTIAL AND PROPRIETARY TO
SAMTEC, INC. AND SHALL NOT BE REPRODUCED
OR TRANSFERRED TO OTHER DOCUMENTS OR
DISCLOSED TO OTHERS OR USED FOR ANY
PURPOSE OTHER THAN THAT WHICH IT WAS
OBTAINED WITHOUT THE EXPRESSED WRITTEN
CONSENT OF SAMTEC, INC.

MATERIAL: DO NOT SCALE DRAWING
INSULATOR: LCP, UL 94 VO, COLOR: BLACK
POWER CONTACT: COPPER ALLOY
SIGNAL CONTACT: PHOS BRONZE

SHEET SCALE: 1:0.66667



520 PARK EAST BLVD, NEW ALBANY, IN 47150
PHONE: 812-944-6733 FAX: 812-948-5047
e-Mail: info@SAMTEC.com code 55322

DESCRIPTION:
RA MINI-POWER W/ SIGNAL SOCKET

DWG. NO.
MPSC-XX-XX-XX-01-XX-X-RA-XX

BY: BRATCHER 2/20/2007 SHEET 1 OF 4

REVISION P

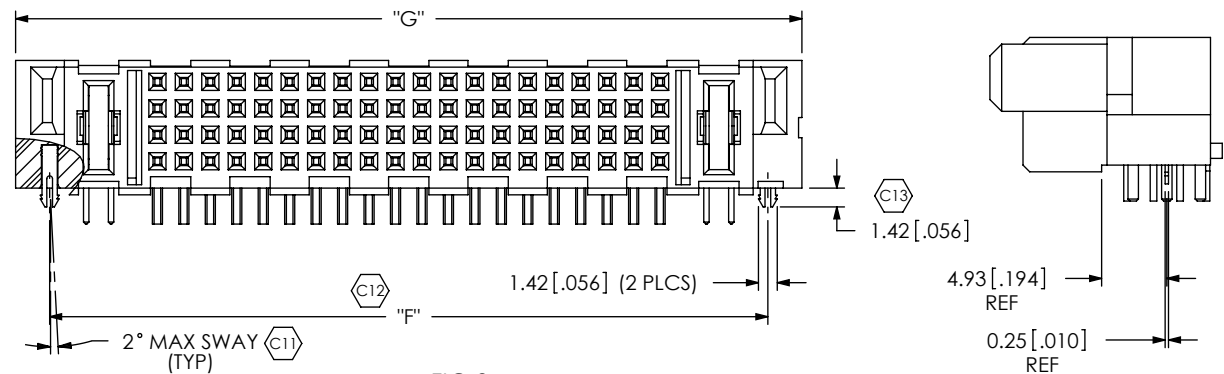
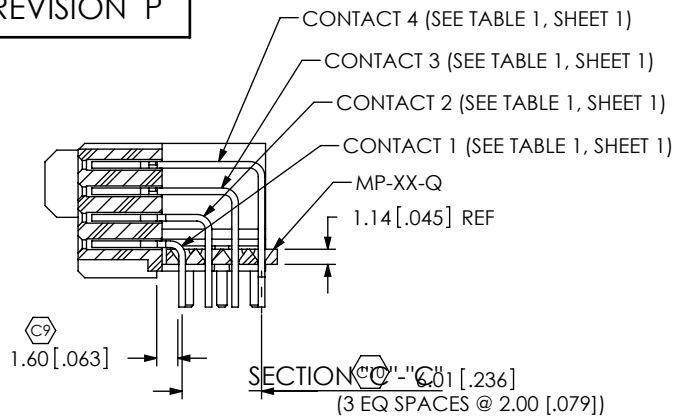


FIG 2
MPSC-01-80-01-01-01-X-RA-LC SHOWN
(SAME AS FIG 1, UNLESS OTHERWISE STATED)

FIG 3
MPSC-02-80-02-01-01-X-RA-LC SHOWN
(SAME AS FIG 1, UNLESS OTHERWISE STATED)

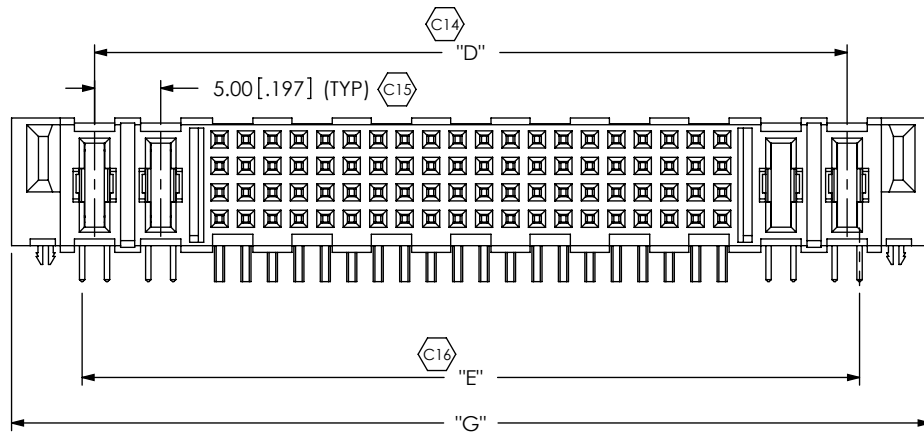


FIG 4
MPSC-00-24-H4-01-01-X-RA-LC SHOWN
(SAME AS FIG 1, UNLESS OTHERWISE STATED)
****NOT RELEASED**

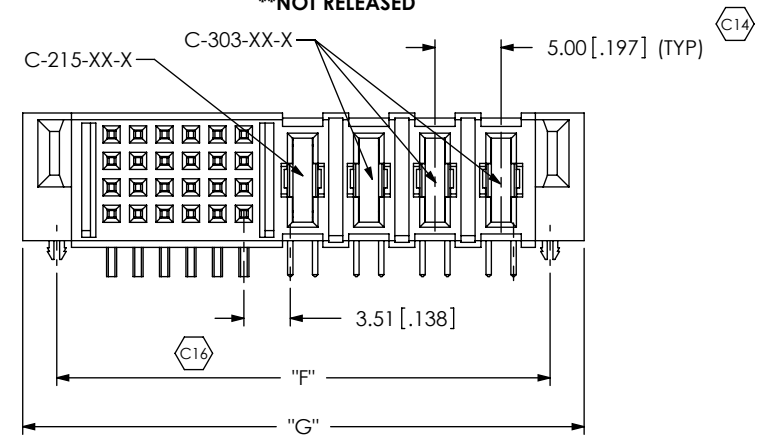


TABLE 2

PART NUMBER	BODY	"B" OAL-SD	"C"	"D"	"E"	"F"	"G"	"H"
MPSC-01-80-01-XX-XX-X-RA-XX	MPS-02-RA-80-XX	64.52 [2.540]	58.17 [2.290]	46.89 [1.846]	48.77 [1.920]	54.29 [2.137]	59.44 [2.340]	19
MPSC-02-80-02-XX-XX-X-RA-XX	MPS-04-RA-80-XX	74.52 [2.934]	68.17 [2.684]	56.89 [2.240]	58.77 [2.314]	64.29 [2.531]	69.44 [2.734]	19
MPSC-01-24-01-XX-XX-X-RA-XX	MPS-02-RA-24-XX	36.52 [1.438]	30.17 [1.188]	18.89 [0.744]	20.77 [0.818]	26.29 [1.035]	31.44 [1.238]	5
MPSC-02-24-02-XX-XX-X-RA-XX	MPS-04-RA-24-XX	46.52 [1.831]	40.17 [1.581]	28.89 [1.137]	30.77 [1.211]	36.29 [1.429]	41.44 [1.631]	5
MPSC-02-16-02-XX-XX-X-RA-SD	MPS-04-RA-16-SD	42.52 [1.674]	36.17 [1.424]	24.89 [0.980]	26.77 [1.054]	32.29 [1.271]	37.44 [1.474]	3
MPSC-00-24-X3-XX-XX-X-RA-XX	MPS-03-RA-24-XXPS	42.52 [1.674]	36.17 [1.424]	N/A	N/A	32.29 [1.271]	37.44 [1.474]	5
MPSC-00-24-X4-XX-XX-X-RA-XX	MPS-04-RA-24-XXPS	47.52 [1.871]	41.17 [1.621]	N/A	N/A	37.29 [1.468]	42.44 [1.671]	5
MPSC-00-20-X3-XX-XX-X-RA-XX	MPS-03-RA-20-XXPS	40.52 [1.595]	34.17 [1.345]	N/A	N/A	30.29 [1.193]	35.44 [1.395]	4
MPSC-00-20-X4-XX-XX-X-RA-XX	MPS-04-RA-20-XXPS	45.52 [1.792]	39.17 [1.542]	N/A	N/A	35.29 [1.389]	40.44 [1.592]	4
MPSC-00-16-X3-XX-XX-X-RA-XX	MPS-03-RA-16-XXPS	38.52 [1.517]	32.17 [1.267]	N/A	N/A	28.29 [1.114]	33.44 [1.317]	3
MPSC-00-16-X4-XX-XX-X-RA-XX	MPS-04-RA-16-XXPS	43.52 [1.713]	37.17 [1.463]	N/A	N/A	33.29 [1.311]	38.44 [1.513]	3
MPSC-00-12-X3-XX-XX-X-RA-XX	MPS-03-RA-12-XXPS	36.52 [1.438]	30.17 [1.188]	N/A	N/A	26.29 [1.035]	31.44 [1.238]	2
MPSC-00-12-X4-XX-XX-X-RA-XX	MPS-04-RA-12-XXPS	41.52 [1.635]	35.17 [1.385]	N/A	N/A	31.29 [1.232]	36.44 [1.435]	2

PROPRIETARY NOTE

THIS DOCUMENT CONTAINS INFORMATION
CONFIDENTIAL AND PROPRIETARY TO
SAMTEC, INC. AND SHALL NOT BE REPRODUCED
OR TRANSFERRED TO OTHER DOCUMENTS OR
DISCLOSED TO OTHERS OR USED FOR ANY
PURPOSE OTHER THAN THAT WHICH IT WAS
OBTAINED WITHOUT THE EXPRESSED WRITTEN
CONSENT OF SAMTEC, INC.

DO NOT SCALE DRAWING

SHEET SCALE: 1.75:1

samtec

520 PARK EAST BLVD, NEW ALBANY, IN 47150
PHONE: 812-944-6733 FAX: 812-948-5047
e-Mail: info@SAMTEC.com code 55322

DESCRIPTION:

RA MINI-POWER W/ SIGNAL SOCKET

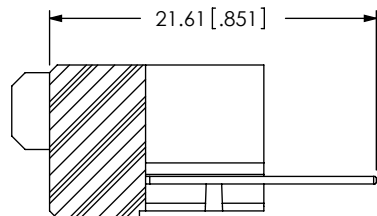
DWG. NO.

MPSC-XX-XX-XX-01-XX-X-RA-XX

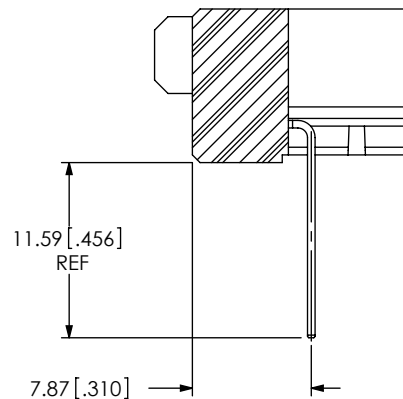
BY: BRATCHER 2/20/2007

SHEET 2 OF 4

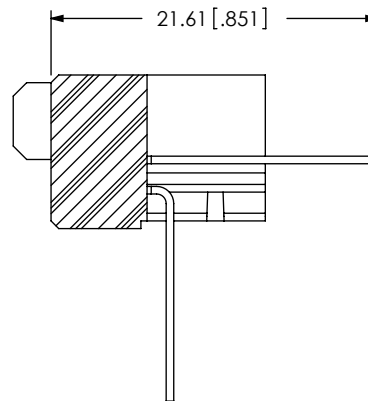
IN-PROCESS 1
FILL C-79-XXX-X ROW 1



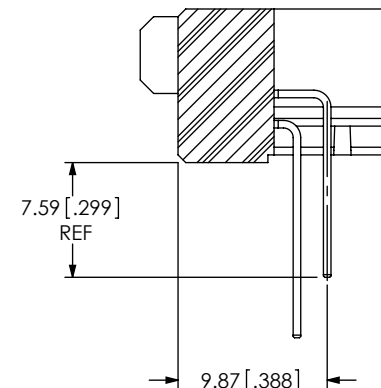
IN-PROCESS 2
BEND ROW 1



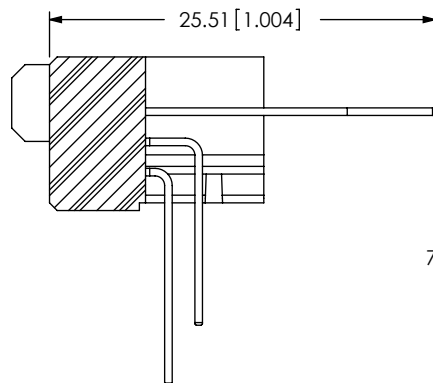
IN-PROCESS 3
FILL C-79-XXX-X ROW 2



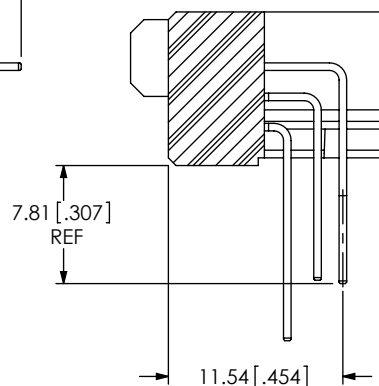
IN-PROCESS 4
BEND ROW 2



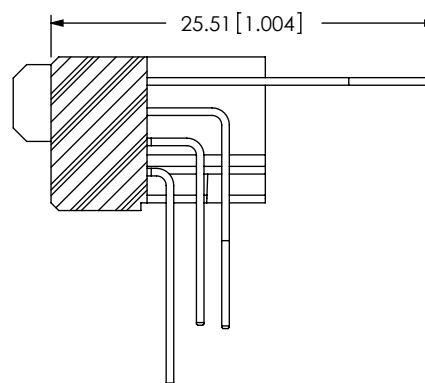
IN-PROCESS 5
FILL C-79-XXX-X ROW 3



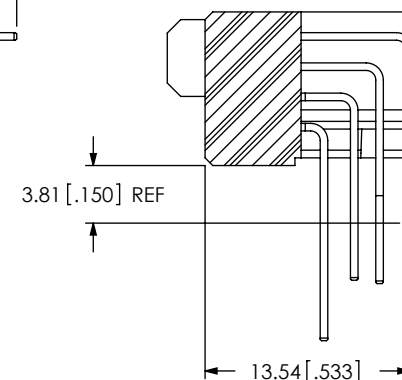
IN-PROCESS 6
BEND ROW 3



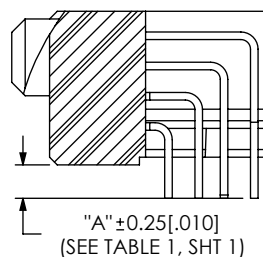
IN-PROCESS 7
FILL C-79-XXX-X ROW 4



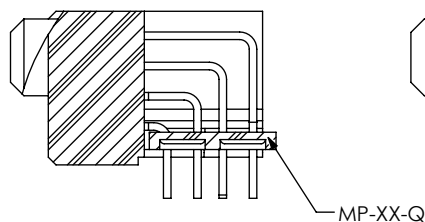
IN-PROCESS 8
BEND ROW 4



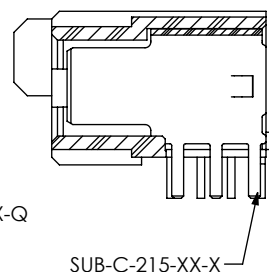
IN-PROCESS 9
SHEAR



IN-PROCESS 10
ADD MP-XX-Q



IN-PROCESS 11
FILL SUB-C-215-XX-X



PROPRIETARY NOTE

THIS DOCUMENT CONTAINS INFORMATION
CONFIDENTIAL AND PROPRIETARY TO
SAMTEC, INC. AND SHALL NOT BE REPRODUCED
OR TRANSFERRED TO OTHER DOCUMENTS OR
DISCLOSED TO OTHERS OR USED FOR ANY
PURPOSE OTHER THAN THAT WHICH IT WAS
OBTAINED WITHOUT THE EXPRESSED WRITTEN
CONSENT OF SAMTEC, INC.

DO NOT SCALE DRAWING

SHEET SCALE: 2:1

samtec

520 PARK EAST BLVD, NEW ALBANY, IN 47150
PHONE: 812-944-6733 FAX: 812-948-5047
e-Mail: info@SAMTEC.com code 55322

DESCRIPTION:
RA MINI-POWER W/ SIGNAL SOCKET

DWG. NO.
MPSC-XX-XX-XX-01-XX-X-RA-XX

BY: BRATCHER 2/20/2007 SHEET 3 OF 4



FIG 5
HOT SWAP OPTION
MPSC-02-80-H2-01-01-X-RA-LC SHOWN
(SAME AS FIG 1, UNLESS OTHERWISE STATED)
** = NOT RELEASED

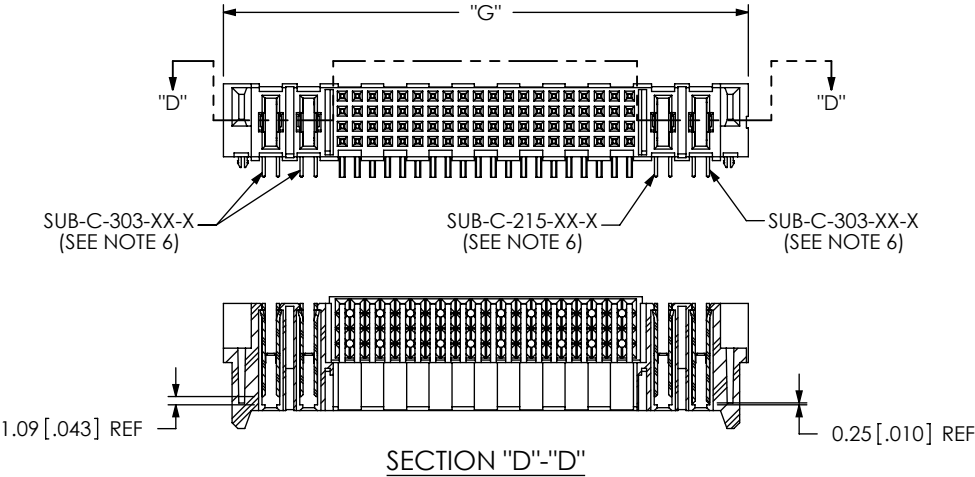


TABLE 3

PLATING	POWER PIN CONTACT	POWER PIN TAIL	SIGNAL PIN CONTACT AREA	SIGNAL PIN TAIL
-L	LIGHT GOLD	MATTE TIN	LIGHT GOLD	MATTE TIN
-T	MATTE TIN	MATTE TIN	LIGHT GOLD	MATTE TIN

PROPRIETARY NOTE
THIS DOCUMENT CONTAINS INFORMATION
CONFIDENTIAL AND PROPRIETARY TO
SAMTEC, INC. AND SHALL NOT BE REPRODUCED
OR TRANSFERRED TO OTHER DOCUMENTS OR
DISCLOSED TO OTHERS OR USED FOR ANY
PURPOSE OTHER THAN THAT WHICH IT WAS
OBTAINED WITHOUT THE EXPRESSED WRITTEN
CONSENT OF SAMTEC, INC.

DO NOT SCALE DRAWING

SHEET SCALE: 1:1

samtec

520 PARK EAST BLVD, NEW ALBANY, IN 47150
PHONE: 812-944-6733 FAX: 812-948-5047
e-Mail info@SAMTEC.com code 55322

DESCRIPTION:
RA MINI-POWER W/ SIGNAL SOCKET

DWG. NO.
MPSC-XX-XX-XX-01-XX-X-RA-XX

BY: BRATCHER 2/20/2007 SHEET 4 OF 4