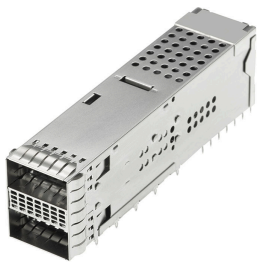




**Part Number :** [2040588113](#)  
**Product Description :** QSFP-DD Assembly,  
Stacked 2x1, Closed Top  
**Series Number :** 204058  
**Status :** Active  
**Product Category :** High-Speed I/O  
Connectors



## Documents & Resources


**Drawings**  
[2040588113\\_sd.pdf](#)

**3D Models and Design Files**  
[2040588113\\_stp.zip](#)  
[2040586110LP-000.pdf](#)  
[2040586110UP-000.pdf](#)  
[2040586110-000.zip](#)

**Specifications**  
[2040580004-000.pdf](#)  
[2040580001-PS.pdf](#)  
[2040580001-TS-000.pdf](#)

## Product Environment Compliance

### Compliance

GADSL/IMDS	Not Relevant
China RoHS	
EU ELV	Not Relevant
Low-Halogen Status	Low-Halogen per IEC 61249-2-21
REACH SVHC	Not Contained per D(2024)4144-DC (27 June 2024)
EU RoHS	Compliant per EU 2015/863

Multiple Part Product Compliance Statements  
- Eu RoHS  
- REACH SVHC  
- Low-Halogen

## Multiple Part Industry Compliance Documents

- IPC 1752A Class C
- IPC 1752A Class D
- Molex Product Compliance Declaration
- IEC-62474
- chemSHERPA (xml)

## EU RoHS Certificate of Compliance

---

### Part Details

#### General

Status	Active
Category	High-Speed I/O Connectors
Series	204058
Description	QSFP-DD Assembly, Stacked 2x1, Closed Top
Application	Module-to-Board
Component Type	Receptacle
Product Family	QSFP-DD Interconnect System and Cable Assemblies
Product Name	QSFP-DD
Type	Pluggable
UPC	191130500024

#### Agency

CSA	LR19980
UL	E29179

#### Electrical

Current - Maximum per Contact	2.0A
Data Rate	56.0 Gbps
Grounding to Panel	Yes
Shield Type	EMI Fingers
Shielded	Yes
Voltage - Maximum	30V AC (RMS) / 42V DC

#### Physical

Circuits (Loaded)	152
Circuits (maximum)	152
Color - Resin	Black
Durability (mating cycles max)	250
Flammability	94V-0
Gender	Female
Keying to Mating Part	None
Lock to Mating Part	Yes
Material - Metal	Copper Alloy
Material - Plating Mating	Gold
Material - Plating Termination	Matte Tin
Material - Resin	High Temperature Thermoplastic
Net Weight	43.000/g
Number of Rows	2
Orientation	Right Angle
Packaging Type	Tray
Panel Mount	Spring Tabs
PC Tail Length	1.70mm
PCB Locator	No
PCB Retention	Yes
PCB Thickness - Recommended	1.57mm
Pitch - Mating Interface	0.80mm
Plating min - Mating	0.760µm
Plating min - Termination	0.760µm
Polarized to Mating Part	Yes
Polarized to PCB	Yes
Ports	2
Temperature Range - Operating	-25° to +65°C
Termination Interface Style	Through Hole - Compliant Pin

---

## Mates With / Use With

### Mates with Part(s)

Description	Part Number
-------------	-------------

QSFP-DD-to-QSFP-DD Passive Cable Assemblies, 56 Gbps	<u>201591</u>
QSFP Cable Assemblies	<u>74757</u>