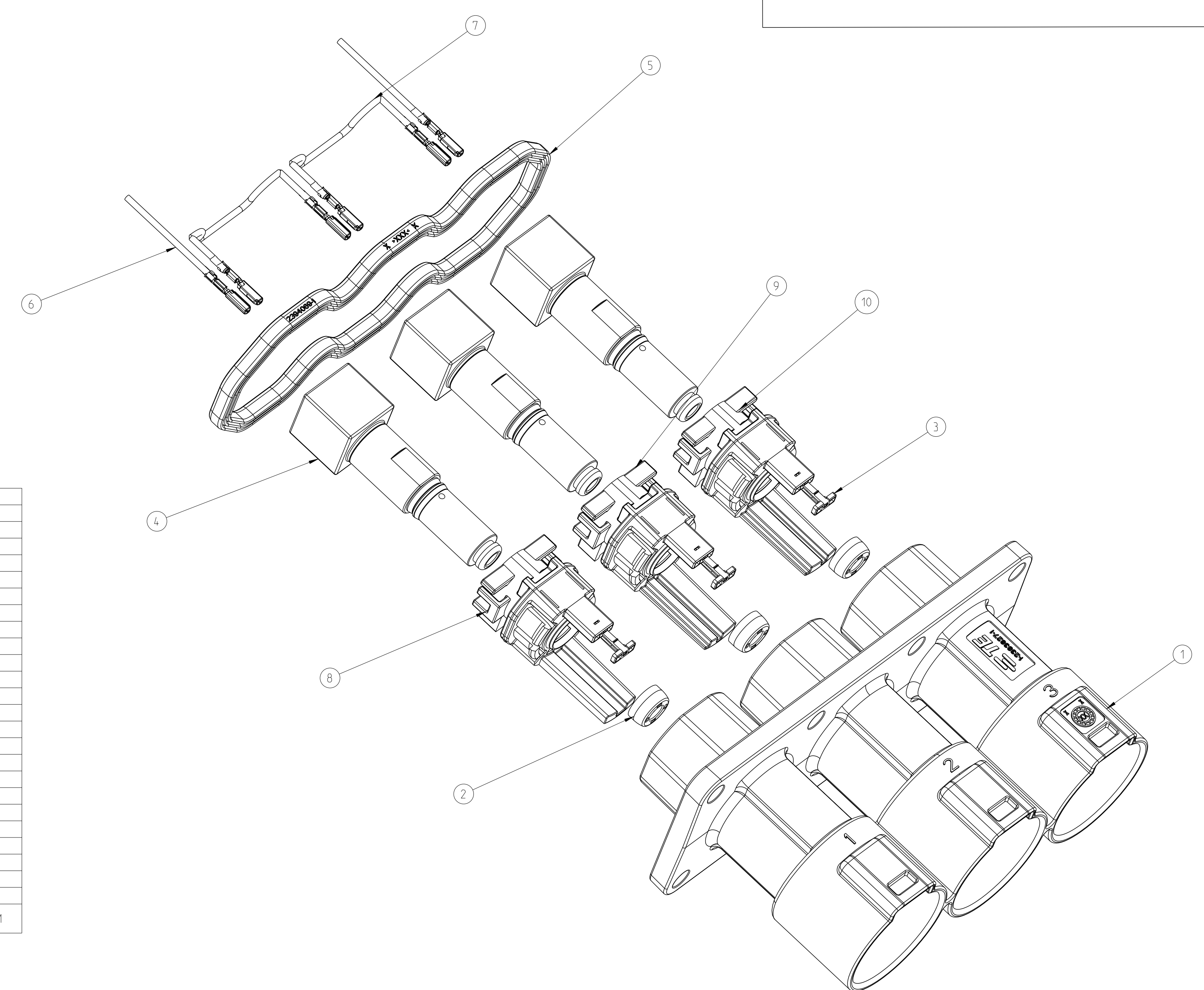
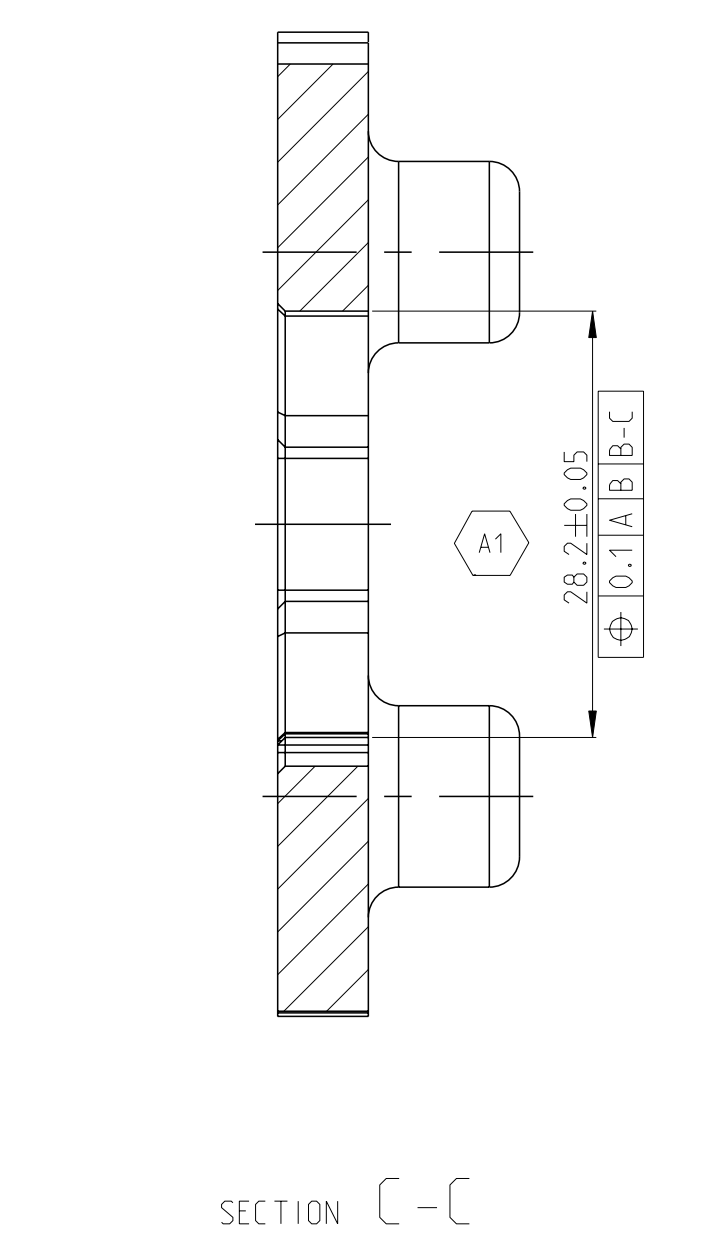
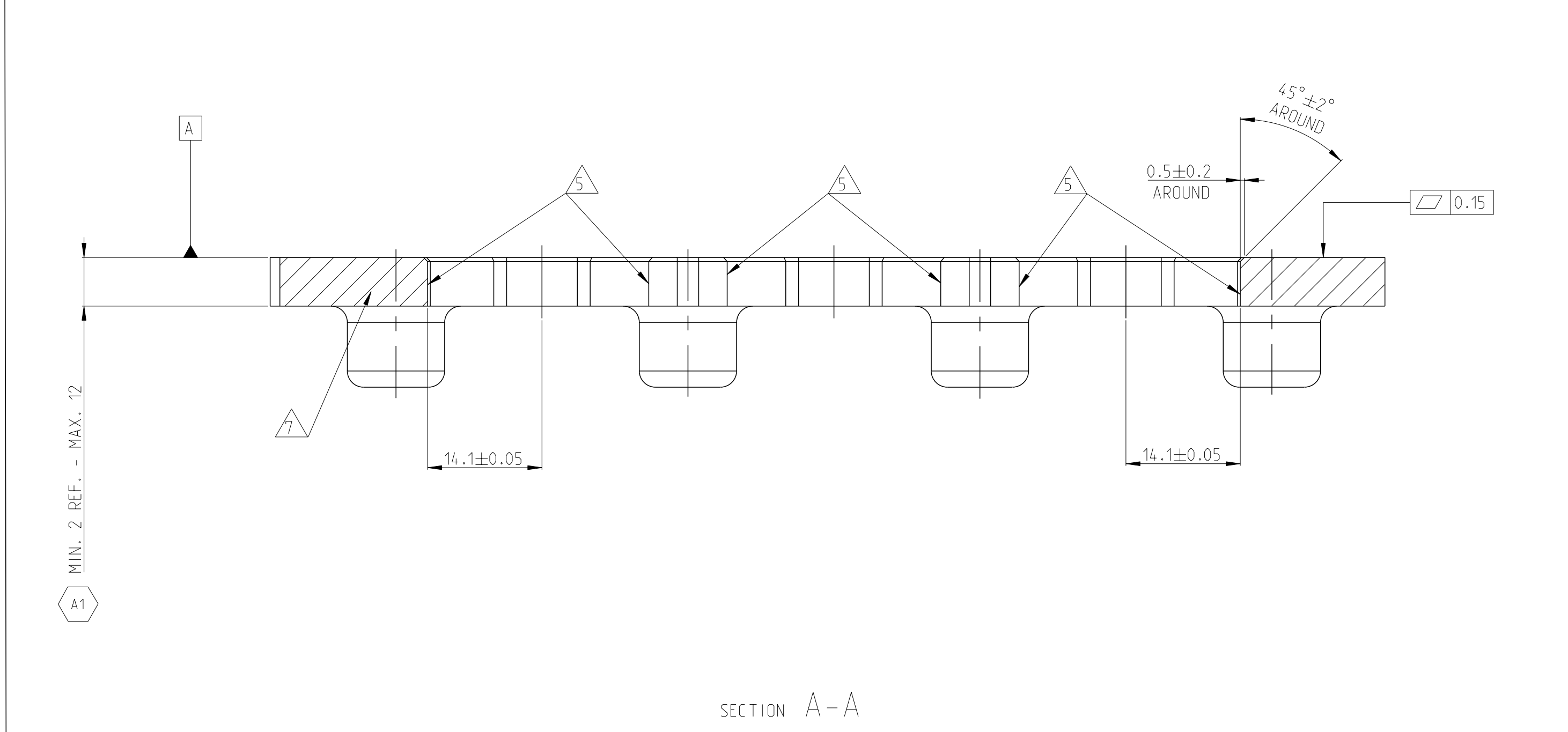
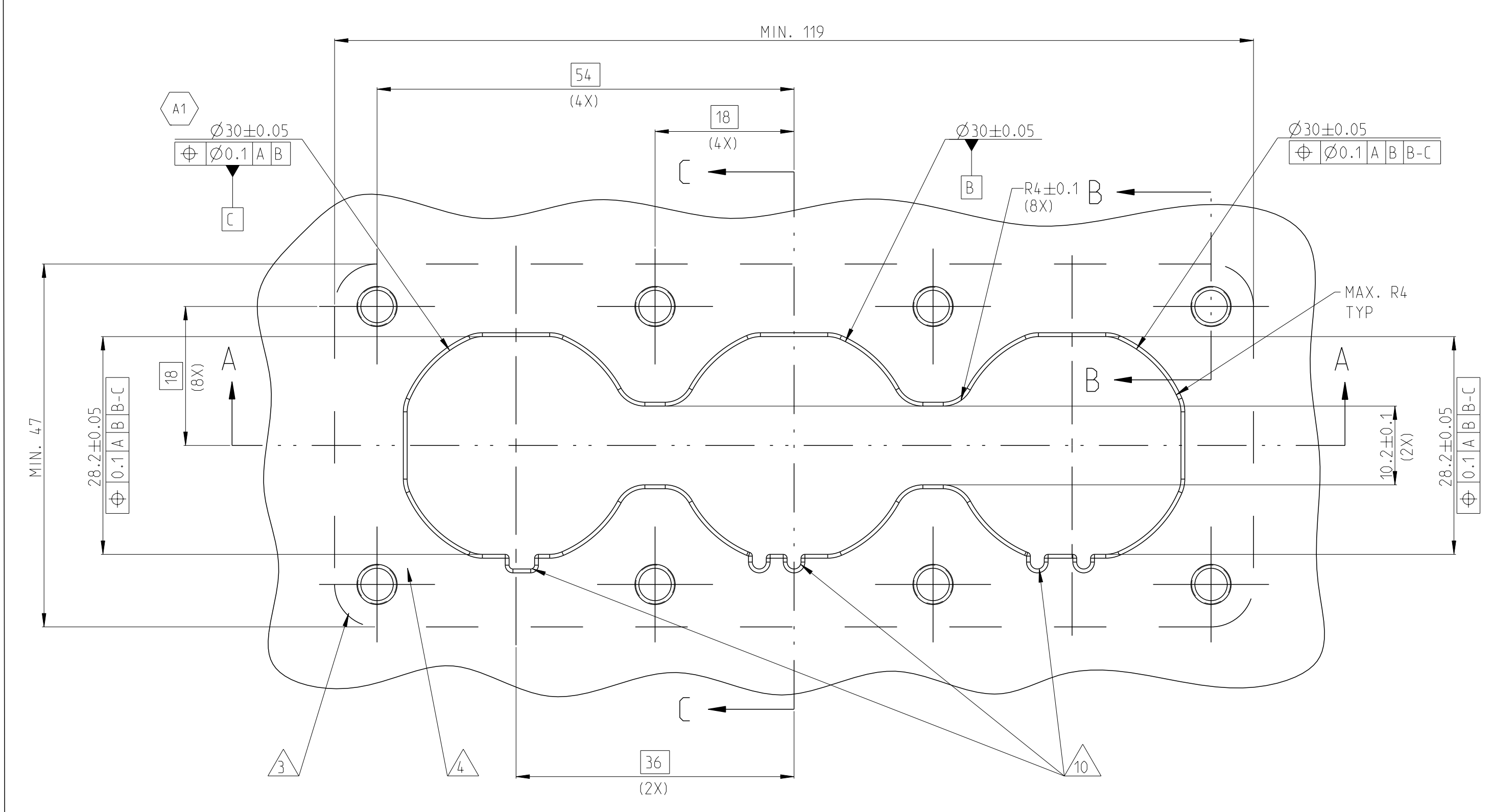


2-2394062-4	K/L/M	3POS,PIN DIA 10.0 HDR ASSY,180DEG	CODE HOUSING	M	PA66-GF	AQUA RED	(4*10)	1	10
			CODE HOUSING	L	PA66-GF	AQUA BROWN		1	9
			CODE HOUSING	K	PA66-GF	AQUA GREEN		1	8
			FOLLOW 2-2394062-1	-	-	-		-	1-7
2-2394062-3	G/H/J	3POS,PIN DIA 10.0 HDR ASSY,180DEG	CODE HOUSING	J	PA66-GF	ORANGE	(4*10)	1	10
			CODE HOUSING	H	PA66-GF	YELLOW		1	9
			CODE HOUSING	G	PA66-GF	RED		1	8
			FOLLOW 2-2394062-1	-	-	-		-	1-7
2-2394062-2	D/E/F	3POS,PIN DIA 10.0 HDR ASSY,180DEG	CODE HOUSING	F	PA66-GF	BROWN	(4*10)	1	10
			CODE HOUSING	E	PA66-GF	GREEN		1	9
			CODE HOUSING	D	PA66-GF	PURPLE		1	8
			FOLLOW 2-2394062-1	-	-	-		-	1-7
2-2394062-1	A/B/C	3POS,PIN DIA 10.0 HDR ASSY,180DEG	CODE HOUSING	C	PA66-GF	BLUE	(4*10)	1	10
			CODE HOUSING	B	PA66-GF	NATURE		1	9
			CODE HOUSING	A	PA66-GF	BLACK		1	8
			HV INTERLOCK TERMINAL WIRE 2	-	-	-		2	7
			HV INTERLOCK TERMINAL WIRE 1	-	-	-		2	6
			FACE SEAL	-	SILICION	RED		1	5
			BUSBAR TOP SIDE	-	COPPER	Ag PLATED		3	4
			HEADER TPA	-	PA66-GF	RED		3	3
			FINGER PROTECTION CAP	-	PA66-GF	BLACK		3	2
			HEADER HOUSING 180DEG,3POS	-	AL-ALLOY	NICKEL PLATED		1	1
TE-ASSY-NO.	CODE	DESCRIPTION	DESCRIPTION	CODE	MATERIAL	SURFACE COLOR	WEIGHT (g)	QTY	ITEM

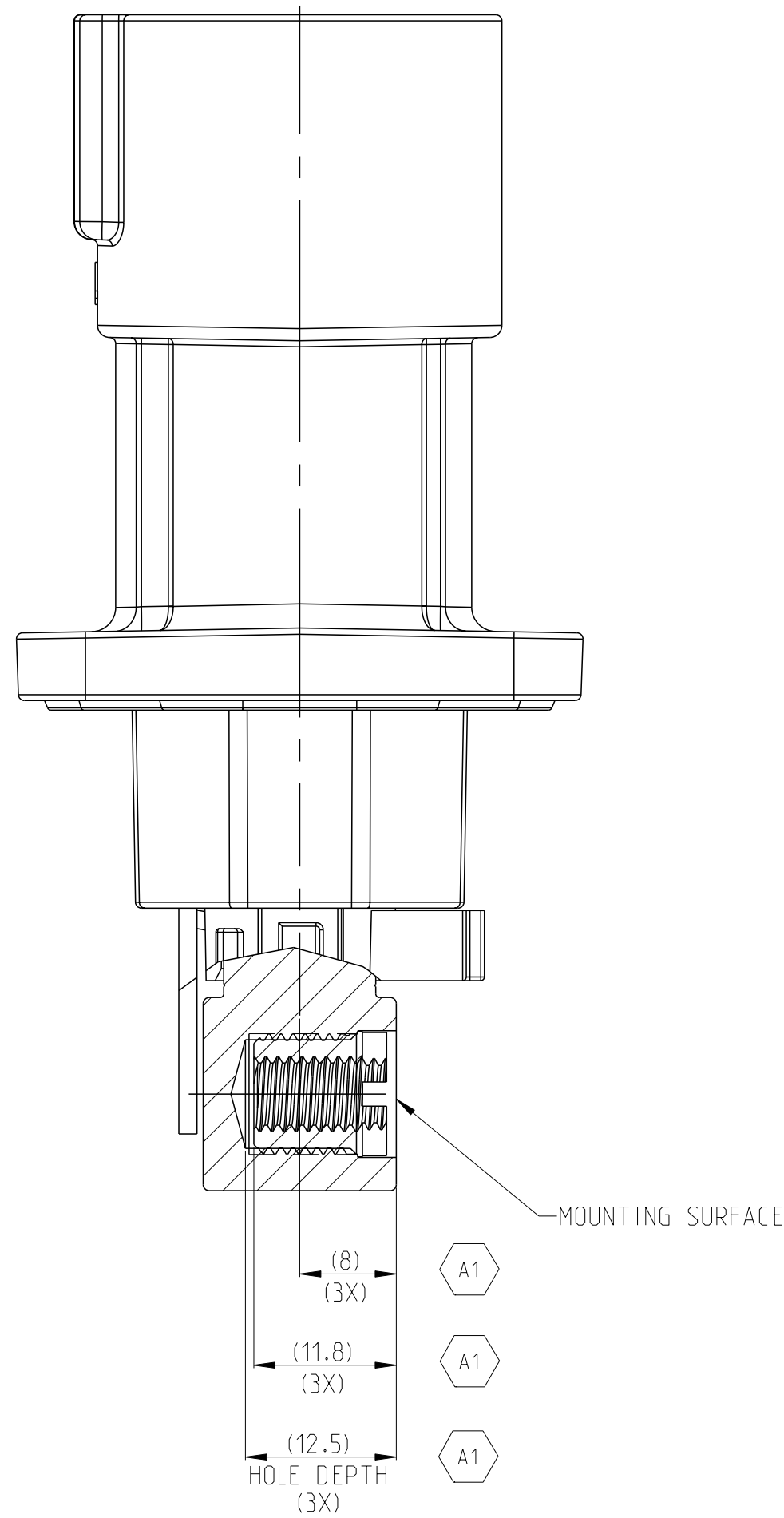


ADAPTER PLATE - HVP-HD1000 3POS HEADER INTERFACE



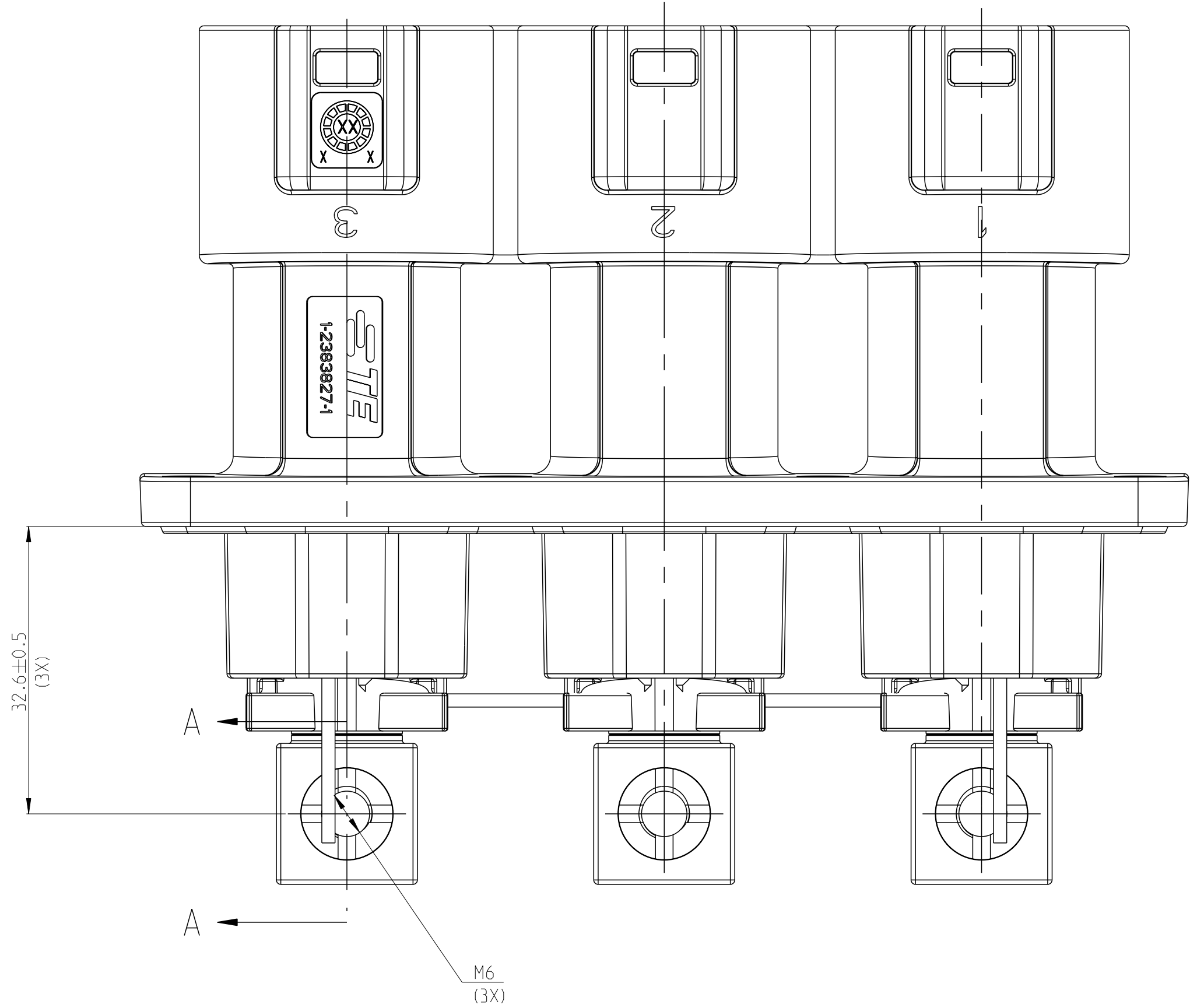
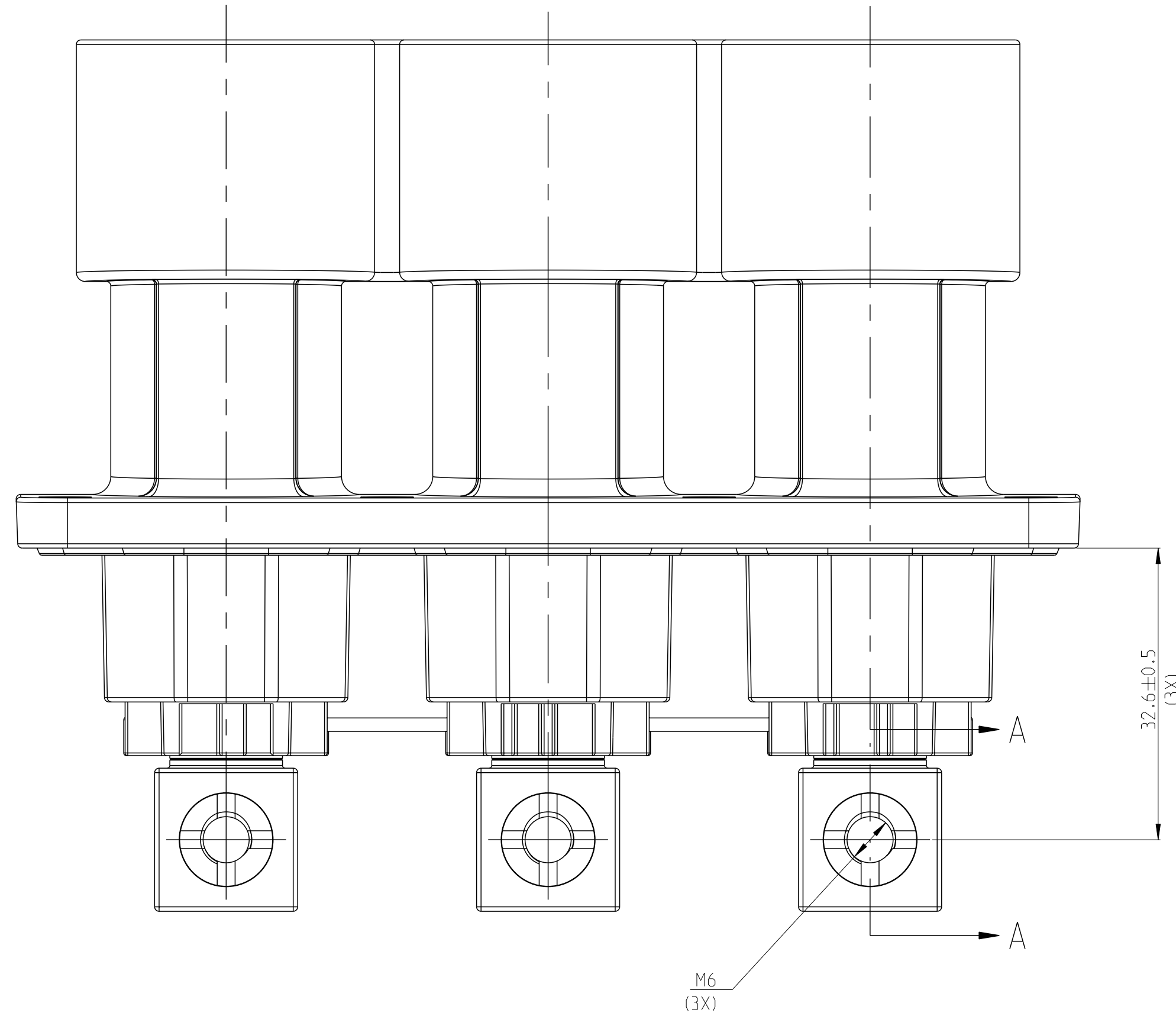
- 1. MATING CONNECTOR REFER TO DRAWING 2394115
- △ CODING VARIANT
- △ FREE SPACE FOR HEADER
- △ SEALING AREA: NO BURR, TOOL PARTING, SHRINKAGE, CAVITIES AND GATE MARKS PERMITTED. SURFACE ROUGHNESS: Ra≤1.6
- △ DRAFT ANGLE UP TO 0.5° PERMITTED
- △ MOUNTING SCREW MS, SCREW TYPE UP TO MANUFACTURER, DRILL HOLE DESIGN ACCORDING TO SCREW TYPE
- △ MATERIAL: CORROSION RESISTANT, ELECTROCONDUCTIVE
- △ SCREW INSERT M6 FOR BUSBAR CONNECTION
- △ ALL THREAD HOLES ARE BLIND HOLES
- △ INTERFACE PANEL CODE SEE SHEET 4

THIS DRAWING IS A CONTROLLED DOCUMENT.				DATE	30AUG2021	REV	1	REV	1
DIMENSIONS:				DATE	30AUG2021	REV	1	REV	1
UNIT:				DATE	30AUG2021	REV	1	REV	1
MATERIAL:				DATE	30AUG2021	REV	1	REV	1
SEE TABLE				DATE	30AUG2021	REV	1	REV	1

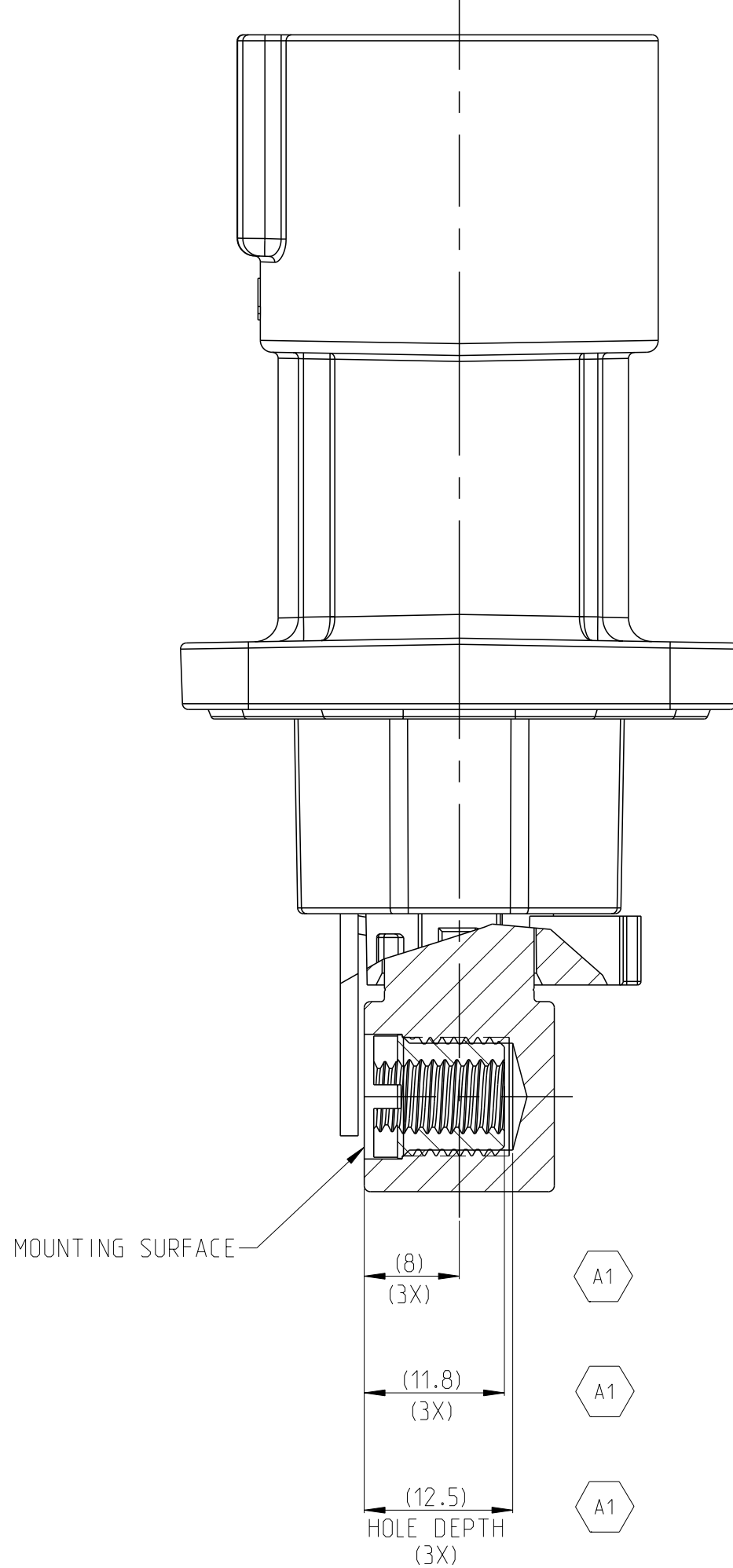


SECTION A-A

1. MISSING DIMENSIONS REFER TO 2-2394062-1



1. MISSING DIMENSIONS REFER TO 2-2394062-1

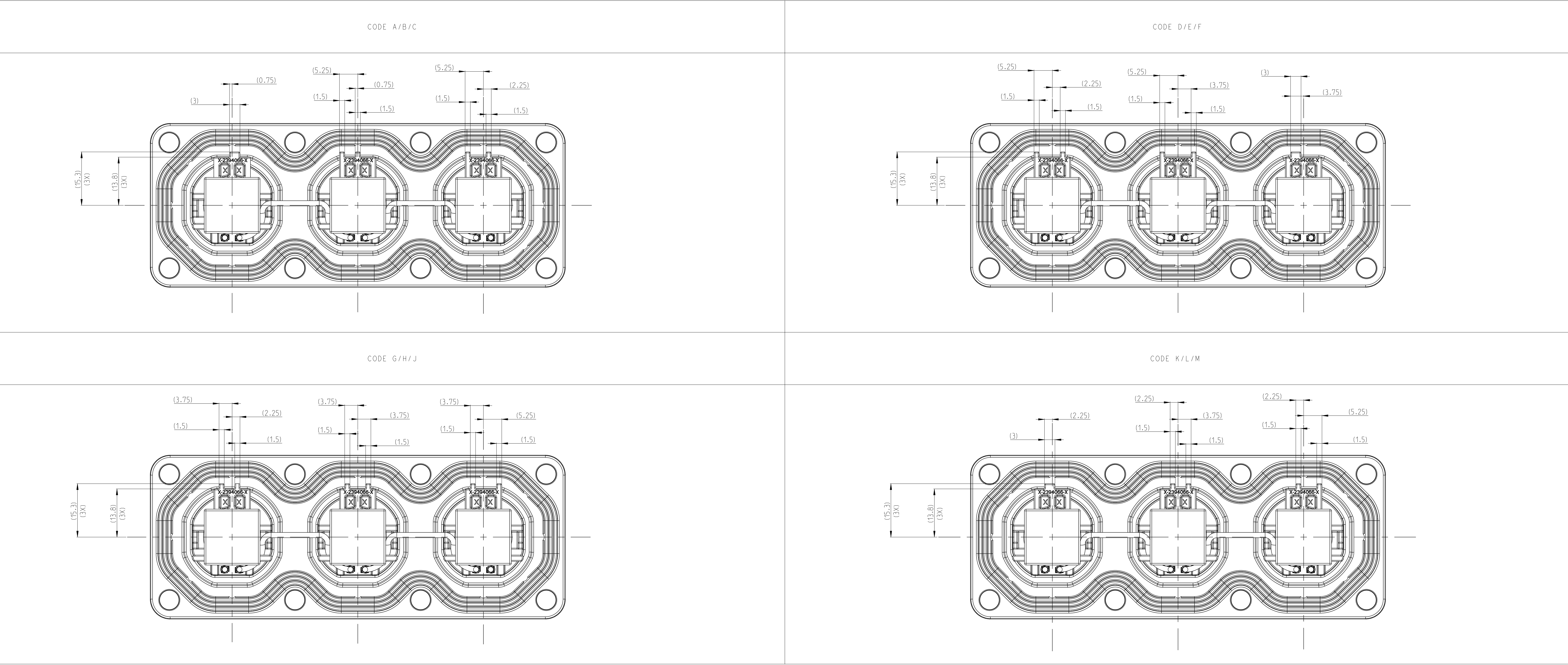


SECTION A-A

2394062-4	K/L/M	3POS.PIN DIA 10.0 HDR ASSY.180DEG	CODE HOUSING	M	PA66-GF	AQUA RED	(410)	1	10
			CODE HOUSING	L	PA66-GF	AQUA BROWN		1	9
			CODE HOUSING	K	PA66-GF	AQUA GREEN		1	8
			FOLLOW 2394062-1	-	-	-		-	1-7
2394062-3	G/H/J	3POS.PIN DIA 10.0 HDR ASSY.180DEG	CODE HOUSING	J	PA66-GF	ORANGE	(410)	1	10
			CODE HOUSING	H	PA66-GF	YELLOW		1	9
			CODE HOUSING	G	PA66-GF	RED		1	8
			FOLLOW 2394062-1	-	-	-		-	1-7
2394062-2	D/E/F	3POS.PIN DIA 10.0 HDR ASSY.180DEG	CODE HOUSING	F	PA66-GF	BROWN	(410)	1	10
			CODE HOUSING	E	PA66-GF	GREEN		1	9
			CODE HOUSING	D	PA66-GF	PURPLE		1	8
			FOLLOW 2394062-1	-	-	-		-	1-7
2394062-1	A/B/C	3POS.PIN DIA 10.0 HDR ASSY.180DEG	CODE HOUSING	C	PA66-GF	BLUE	(410)	1	10
			CODE HOUSING	B	PA66-GF	NATURE		1	9
			CODE HOUSING	A	PA66-GF	BLACK		1	8
			HV INTERLOCK TERMINAL WIRE 2	-	-	-		2	7
			HV INTERLOCK TERMINAL WIRE 1	-	-	-		2	6
			FACE SEAL	-	SILICION	RED		1	5
			BUSBAR,FRONT SIDE	-	COPPER	Ag PLATED		3	4
			HEADER TPA	-	PA66-GF	RED		3	3
			FINGER PROTECTION CAP	-	PA66-GF	BLACK		3	2
			HEADER HOUSING 180DEG,3POS	-	AL-ALLOY	NICKEL PLATED		1	1
TE-ASSY-NO.	CODE	DESCRIPTION	DESCRIPTION	CODE	MATERIAL	SURFACE COLOR	WEIGHT (g)	QTY	ITEM

1-2394062-4	K/L/M	3POS.PIN DIA 10.0 HDR ASSY.180DEG	CODE HOUSING	M	PA66-GF	AQUA RED	(410)	1	10
			CODE HOUSING	L	PA66-GF	AQUA BROWN		1	9
			CODE HOUSING	K	PA66-GF	AQUA GREEN		1	8
			FOLLOW 1-2394062-1	-	-	-		-	1-7
1-2394062-3	G/H/J	3POS.PIN DIA 10.0 HDR ASSY.180DEG	CODE HOUSING	J	PA66-GF	ORANGE	(410)	1	10
			CODE HOUSING	H	PA66-GF	YELLOW		1	9
			CODE HOUSING	G	PA66-GF	RED		1	8
			FOLLOW 1-2394062-1	-	-	-		-	1-7
1-2394062-2	D/E/F	3POS.PIN DIA 10.0 HDR ASSY.180DEG	CODE HOUSING	F	PA66-GF	BROWN	(410)	1	10
			CODE HOUSING	E	PA66-GF	GREEN		1	9
			CODE HOUSING	D	PA66-GF	PURPLE		1	8
			FOLLOW 1-2394062-1	-	-	-		-	1-7
1-2394062-1	A/B/C	3POS.PIN DIA 10.0 HDR ASSY.180DEG	CODE HOUSING	C	PA66-GF	BLUE	(410)	1	10
			CODE HOUSING	B	PA66-GF	NATURE		1	9
			CODE HOUSING	A	PA66-GF	BLACK		1	8
			HV INTERLOCK TERMINAL WIRE 2	-	-	-		2	7
			HV INTERLOCK TERMINAL WIRE 1	-	-	-		2	6
			FACE SEAL	-	SILICION	RED		1	5
			BUSBAR,BACK SIDE	-	COPPER	Ag PLATED		3	4
			HEADER TPA	-	PA66-GF	RED		3	3
			FINGER PROTECTION CAP	-	PA66-GF	BLACK		3	2
			HEADER HOUSING 180DEG,3POS	-	AL-ALLOY	NICKEL PLATED		1	1
TE-ASSY-NO.	CODE	DESCRIPTION	DESCRIPTION	CODE	MATERIAL	SURFACE COLOR	WEIGHT (g)	QTY	ITEM

REVISIONS				
P.	LV.	DESCRIPTION	DATE	BY
-	-	SEE SHEET 1	-	-



THIS DRAWING IS A CONTROLLED DOCUMENT.

DIMENSIONS:
INCHES
MILLIMETERS

±0.5
±0.1
±0.001

±0.001

TE CONNECTIVITY
TE CONNECTIVITY
TE CONNECTIVITY

TE CONNECTIVITY
TE CONNECTIVITY
TE CONNECTIVITY

DATE: 30AUG2021
BY: J.L.L.
CHECKED: J.L.L.
APPROVED: J.L.L.

DATE: 30AUG2021
BY: J.L.L.
CHECKED: J.L.L.
APPROVED: J.L.L.

NAME: 3PDS, PIN DIA10.0, HDR ASSY, 180DEG
HVP-HD1000

SIZE: 00779
CASE CODE: C=2394062
DRAWING NO: A0

SCALE: 2:1
SHEET: 3 OF 4
REV: A.1

SCALE: 2:1
SHEET: 3 OF 4
REV: A.1

Mouser Electronics

Authorized Distributor

Click to View Pricing, Inventory, Delivery & Lifecycle Information:

[TE Connectivity:](#)

[2394062-1](#)