

- NOTES:
1. ALL PARTS TO BE BULK PACKED
 2. CONTACTS SHIPPED UNASSEMBLED
 3. ALL DIMENSIONS ARE REFERENCE EXCEPT THOSE WITH A TOLERANCE

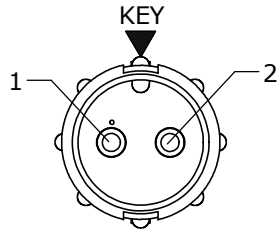


| KIT P/N | GROMMET SIZE |
|--------------|---|
| 8380-XPG-513 | .148 GROMMET I.D. FOR CABLE O.D. .13-.15 [3.3-3.8mm] |
| 8380-XPG-516 | .176 GROMMET I.D. FOR CABLE O.D. .16-.18 [4.1-4.6mm] |
| 8380-XPG-519 | .206 GROMMET I.D. FOR CABLE O.D. .19-.21 [4.8-5.3mm] |
| 8380-XPG-522 | .245 GROMMET I.D. FOR CABLE O.D. .22-.25 [5.6-6.3mm] |
| 8380-XPG-526 | .265 GROMMET I.D. FOR CABLE O.D. .25-.27 [6.4-6.9mm] |
| 8380-XPG-528 | .280 GROMMET I.D. FOR CABLE O.D. .26-.285 [6.6-7.2mm] |

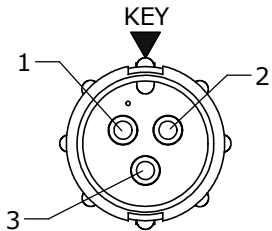
| KIT P/N | NO. OF CONTACTS |
|--------------|-----------------|
| 8380-2PG-5XX | 2 #16 |
| 8380-3PG-5XX | 3 #16 |
| 8380-4PG-5XX | 4 #16 |
| 8380-5PG-5XX | 5 #16 |
| 8380-XPG-5XX | |

GROMMET SIZE

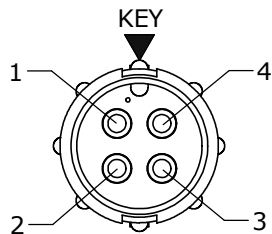
NO. OF CONTACTS



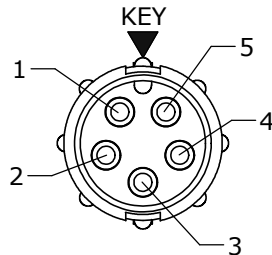
FACE VIEW
8380-2PG-5XX



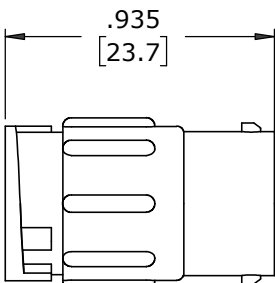
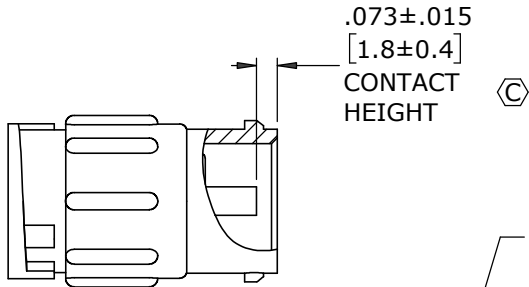
FACE VIEW
8380-3PG-5XX



FACE VIEW
8380-4PG-5XX

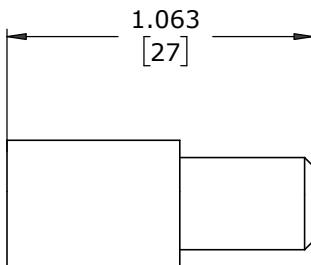


FACE VIEW
8380-5PG-5XX

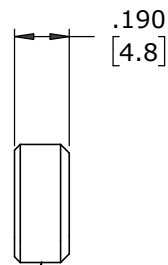


IN-LINE CONNECTOR, MALE
MAT'L: NYLON, BLACK

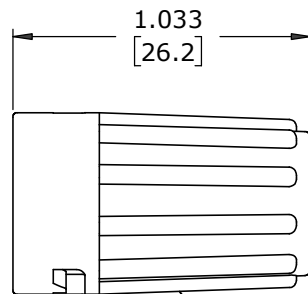
(2-5) #16 PIN CONTACTS, CRIMP
MAT'L: GOLD PLATED
COPPER ALLOY



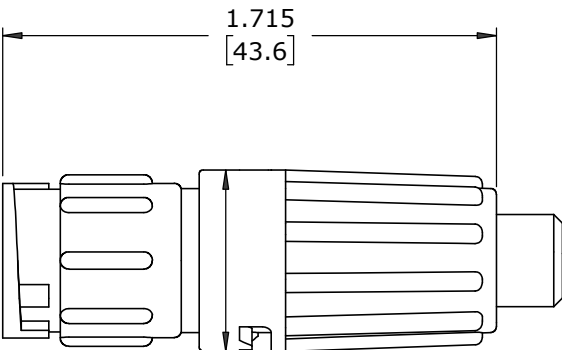
GROMMET
MAT'L: SANTOPRENE, BLACK



CABLE GRIP
MAT'L: POLYPROPYLENE, BLACK



BACKSHELL
MAT'L: NYLON, BLACK



ASSEMBLED VIEW
FOR CUSTOMER REF.

DIMENSIONS IN BRACKETS [] ARE IN MILLIMETERS

CUSTOMER APPROVAL

THIS DOCUMENT CONTAINS CONFIDENTIAL INFORMATION PROPRIETARY TO CONXALL CORPORATION. ANY REPRODUCTION, DISCLOSURE, OR USE OF THIS DOCUMENT /INFORMATION IS EXPRESSLY PROHIBITED UNLESS AUTHORIZED IN WRITING BY CONXALL CORPORATION.

APPROVED BY: _____
DATE: _____

RoHS COMPLIANT

| | | | | | | | | |
|---|-------|----------|---|--------|----------------|--|--|---------------------------|
| C | MA | 02-16-21 | ADDED P/N 8380-XPG-526 AND CONTACT HEIGHT VIEW PER ECR 9544. STANDARDIZED DRAWING | | | | | |
| B | PAK | 01-24-13 | ADDED P/N 8380-XPG-528 FOR .280 CABLE DIA. PER DOR 12-5009TC | | | | | |
| A | AN | 08-02-12 | DRAWING CREATED PER DOR 12-E149SL #20 | | | | | |
| REV. | INIT. | DATE | DESCRIPTION | | | | | |
| <div>ALL INFORMATION ILLUSTRATED IS THE PROPERTY OF "CONXALL CORPORATION". UNAUTHORIZED DUPLICATION OR DISTRIBUTION OF THIS DOCUMENT IS PROHIBITED.</div> <div>ALL UNITS ARE IN FEET, INCHES, FRACTION OF INCHES AND DECIMALS.</div> <div>▷ = CRITICAL CHARACTERISTIC FLAG PER SPEC. XXXX</div> | | | ORIG. DRAWN BY: AN | | DATE: 07-30-12 | <div>conxall</div> <div>601 E. WILDWOOD VILLA PARK, IL 60181</div> | | |
| | | | CHECKED BY: | | | | | |
| | | | APPROVED BY: | | | | TITLE: CABLE TO CABLE CONNECTOR KIT (2-5) #16 PIN CONTACTS | |
| | | | SCALE NTS | SIZE B | SHEET 1 OF 1 | | MINI-CON-X | |
| | | | FILE: 08-02-12 | | | | DIRECTORY: SLW | PART NUMBER: 8380-XPG-5XX |
| | | | CUSTOMER: STANDARD PRODUCT | | | | | |

Mouser Electronics

Authorized Distributor

Click to View Pricing, Inventory, Delivery & Lifecycle Information:

Switchcraft:

[8380-2PG-513](#) [8380-2PG-516](#) [8380-2PG-519](#) [8380-2PG-522](#) [8380-2PG-5XX](#) [8380-3PG-513](#) [8380-3PG-516](#)
[8380-3PG-519](#) [8380-3PG-522](#) [8380-3PG-5XX](#) [8380-4PG-513](#) [8380-4PG-516](#) [8380-4PG-519](#) [8380-4PG-522](#) [8380-4PG-5XX](#) [8380-5PG-5XX](#)