

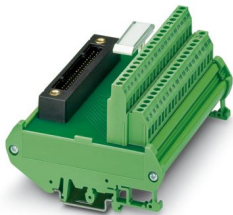
FLKM-KS40/YCS - Passive module



2314642

<https://www.phoenixcontact.com/us/products/2314642>

Please be informed that the data shown in this PDF document is generated from our online catalog. Please find the complete data in the user documentation. Our general terms of use for downloads are valid.



Universal interface module with 1:1 connection between the 40-pos. system connection and the screw connection.

Your advantages

- For analog modules
- Universal interface module with 40 connection terminal blocks

Commercial data

Item number	2314642
Packing unit	1 pc
Minimum order quantity	1 pc
Note	Made to order (non-returnable)
Sales key	C421
Product key	CK218N
Catalog page	Page 520 (C-5-2017)
GTIN	4046356147057
Weight per piece (including packing)	247.3 g
Weight per piece (excluding packing)	176.9 g
Customs tariff number	85369010
Country of origin	DE

FLKM-KS40/YCS - Passive module



2314642

<https://www.phoenixcontact.com/us/products/2314642>

Technical data

Product properties

Product type	Interface module
No. of channels	4
	8
	12
	16
Operating mode	100% operating factor

Data management status

Article revision	05
------------------	----

Insulation characteristics: Air clearances and creepage distances

Insulation	Functional insulation
Overvoltage category	II
Pollution degree	2

Electrical properties

Operating voltage (AC)	≤ 30 V AC
Operating voltage (DC)	≤ 30 V DC
Current (per branch)	≤ 1 A

Air clearances and creepage distances

Rated insulation voltage	50 V
Rated surge voltage	0.5 kV (1.2/50 μ s)

Supported controller YOKOGAWA CS3000 CentumVP

Suitable I/O card	AAB841
	AAI135
	AAI141
	AAI143
	AAI543
	AAI835
	AAI841
	AAR181
	AAT141
	AAV141
	AAV142
	AAV542
	AAP135

Supported controller YOKOGAWA STARDOM

Suitable I/O card	NFAI141
	NFAI43

FLKM-KS40/YCS - Passive module



2314642

<https://www.phoenixcontact.com/us/products/2314642>

	NFAI543
	NFAI135
	NFAP135
	NFAV141
	NFAV142
	NFAV542
	NFAB841
	NFAI841
	NFAI835

Connection data

Connection 1 (control level)

Connection method	Yokogawa KS-compatible
Number of connections	1
Number of positions	40
Note	Usable system cables: Phoenix Contact YUC40, Yokogawa KS1
Tightening torque	0.5 Nm
Pitch	2.54 mm

Connection 2 (field level)

Connection method	Screw connection
Stripping length	7 mm
Screw thread	M3
Number of positions	40
Conductor cross section rigid	0.2 mm ² ... 4 mm ²
Conductor cross-section rigid (2 conductors with same cross section)	0.2 mm ² ... 1.5 mm ²
Conductor cross section flexible	0.2 mm ² ... 2.5 mm ²
	0.25 mm ² ... 1.5 mm ² (Ferrule without plastic sleeve)
	0.25 mm ² ... 2.5 mm ² (Ferrule with plastic sleeve)
Conductor cross section flexible (2 conductors with same cross section)	0.2 mm ² ... 1.5 mm ²
	0.25 mm ² ... 0.75 mm ² (Ferrule without plastic sleeve)
	0.5 mm ² ... 0.5 mm ² (TWIN ferrule with plastic sleeve)
Conductor cross section AWG	24 ... 12
Tightening torque	0.5 Nm ... 0.6 Nm
Pitch	5.08 mm

Signaling

Status display present	No
------------------------	----

Dimensions

Item dimensions

Width	112 mm
Height	89.6 mm

FLKM-KS40/YCS - Passive module



2314642

<https://www.phoenixcontact.com/us/products/2314642>

Depth	65.8 mm
-------	---------

Environmental and real-life conditions

Ambient conditions

Degree of protection (Module)	IP00
Degree of protection (Installation location)	≤ IP54
Ambient temperature (operation)	-20 °C ... 65 °C
Ambient temperature (storage/transport)	-20 °C ... 70 °C
Altitude	≤ 2000 m

Approvals

UKCA

Certificate	UKCA-compliant
-------------	----------------

Standards and regulations

Air clearances and creepage distances

Standards/regulations	EN IEC 60664-1
-----------------------	----------------

Mounting

Mounting type	DIN rail mounting
Mounting position	any

Notes

Notes on operation	For proper use, the specifications of the installation directive (see Downloads) must be observed. For applications or use with third-party products, the specifications, and the safety and warning instructions of the respective third-party manufacturer must also be met.
--------------------	--

FLKM-KS40/YCS - Passive module

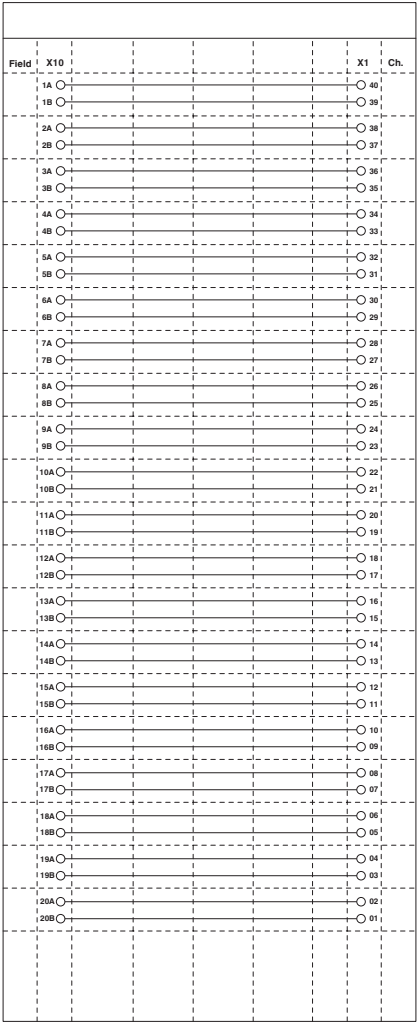
2314642

<https://www.phoenixcontact.com/us/products/2314642>



Drawings

Circuit diagram



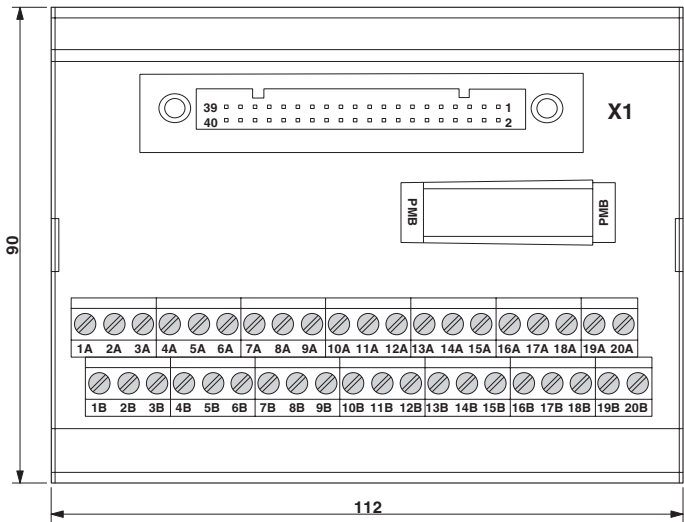
FLKM-KS40/YCS - Passive module

2314642

<https://www.phoenixcontact.com/us/products/2314642>



Dimensional drawing



FLKM-KS40/YCS - Passive module



2314642

<https://www.phoenixcontact.com/us/products/2314642>

Classifications

ECLASS

ECLASS-11.0	27141152
ECLASS-12.0	27141152
ECLASS-13.0	27141152

ETIM

ETIM 9.0	EC002780
----------	----------

UNSPSC

UNSPSC 21.0	39121400
-------------	----------

FLKM-KS40/YCS - Passive module



2314642
<https://www.phoenixcontact.com/us/products/2314642>

Environmental product compliance

EU RoHS	
Fulfills EU RoHS substance requirements	Yes, No exemptions
China RoHS	
Environment friendly use period (EFUP)	EFUP-E
	No hazardous substances above the limits
EU REACH SVHC	
REACH candidate substance (CAS No.)	No substance above 0.1 wt%

Phoenix Contact 2024 © - all rights reserved
<https://www.phoenixcontact.com>

Phoenix Contact USA
586 Fulling Mill Road
Middletown, PA 17057, United States
(+717) 944-1300
info@phoenixcon.com