



ams OSRAM DURIS E 2835 LEDs

GW JTL6S1.EM

ams OSRAM DURIS E 2835 LEDs combine good efficacy and a wide viewing angle into a compact 2.8mm x 3.5mm Plastic Leaded Chip Carrier (PLCC) package. The industry-standard footprint of DURIS E 2835 LEDs makes them ideal for upgrades and retrofit for other 2835 products and common mid-power offerings. These surface-mount LEDs are available with a Correlated Color Temperature (CCT) of 2700K to 6500K.

ams OSRAM DURIS E 2835 LEDs are offered in 0.2W ([GW JTLMS1.EM](#)) and 0.5W ([GW JTLRS1.EM](#)) versions.

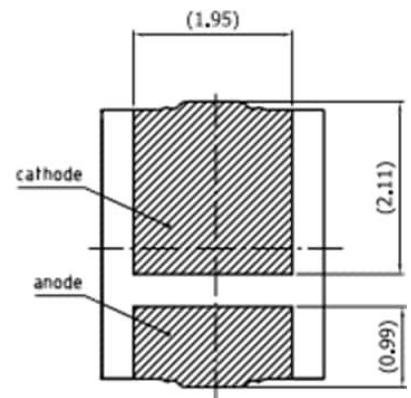
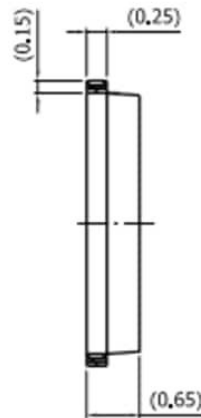
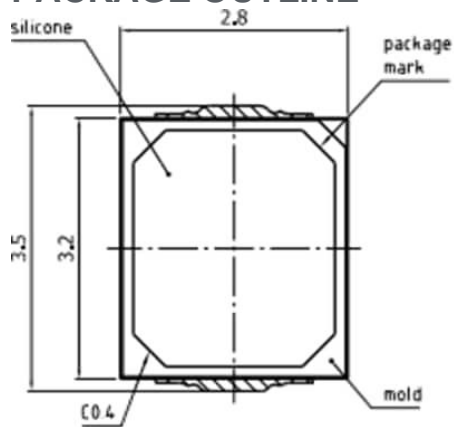
FEATURES

- Industry-standard 2.8mm x 3.5mm footprint for drop-in replacement designs
- White SMT package, colored diffused silicone resin
- Wide 120° (typical) viewing angle at 50%
- 2700K to 6500K CCT range
- Color Rendering Index (CRI)
 - GW JTLMS1.EM: 80 (minimum); 85 (typical)
 - GW JTLRS1.EM: 80 (minimum); 82 (typical)
- Luminous flux
 - GW JTLMS1.EM: 27lm @ 5000K (typical)
 - GW JTLRS1.EM: 113lm @ 3000K (typical)
- Luminous efficacy
 - GW JTLMS1.EM: 150lm/W @ 5000K (typical)
 - GW JTLRS1.EM: 118lm/W @ 3000K (typical)
- Forward voltage (V_F)
 - GW JTLMS1.EM: 2.8V (Minimum); 3.0V (typical); 3.3V (maximum)
 - GW JTLRS1.EM: 8.4V (Minimum); 9.6V (typical); 9.8V (maximum)
- Forward current (I_F):
 - GW JTLMS1.EM: 60mA
 - GW JTLRS1.EM: 100mA
- -40°C to +85°C Operating temperature (T_{OP})
- 120°C Junction temperature (T_J)

APPLICATIONS

- General indoor lighting
- Linear lights
- Retrofits and fixtures
- Professional downlights
- Industrial lighting
- Task lighting

• PACKAGE OUTLINE



general tolerance ± 0.1

lead finish Ag 

Approximate Weight: 20 mg

Mark: Cathode

Product Attribute	Attribute Value	Select Attribute
Manufacturer:	ams OSRAM	
Product Category:	Mid-Power LEDs - White	
RoHS:	Yes	
Product:	White LEDs	
Mounting Style:	SMD/SMT	
Package/Case:	2835	
Illumination Colour:	White	
Wavelength/Colour Temperature:	3000 K	
Luminous Flux/Radiant Flux:	130 lm	
Packaging:	Tape & Reel	
Brand:	ams OSRAM	
Moisture Sensitive:	Yes	
Product Type:	LED - Mid Power	
Factory Pack Quantity:	10000	
Subcategory:	LEDs	
Part # Aliases:	Q65112A9372	

RoHS Information

RoHS 2011/65/EU amended by 2015/863 Compliant According to the manufacturer, this product is RoHS Compliant with RoHS Directive 2011/65/EU and as amended by Directive 2015/863, and without material exemptions.

Please see the Environmental Documents section of this product for any manufacturer information on RoHS.

Mfr.'s Part No: GW JTL6S1.EM

Mfr.: ams OSRAM

Description: Mid-Power LEDs - White White DURIS E 2835