



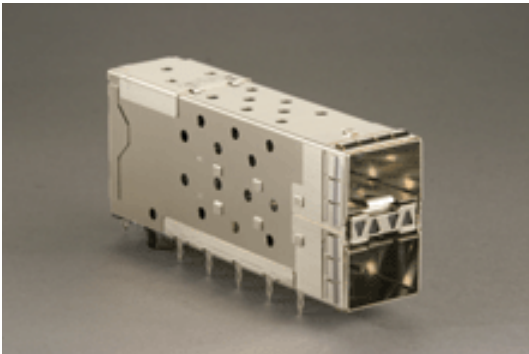
Part Number : [760445002](#)

Product Description : Small Form-factor Pluggable Plus (SFP+) Stacked 2-by-1 Multi-Port Connector with 2 Inner Lightpipe Ports, EMI Metal Gasket, 40 Circuits, Tin (Sn) Tails

Series Number : 76044

Status : Active

Product Category : High-Speed I/O Connectors



Documents & Resources

Drawings

[760445002_sd.pdf](#)

3D Models and Design Files

[760445002_stp.zip](#)

[EE-76090-001-001.pdf](#)

[SP-76090-001-001.zip](#)

Specifications

[AS-75310-001-001.pdf](#)


[AS-76090-001-001.pdf](#)

[PK-75462-001-001.pdf](#)

[PS-75310-001-001.pdf](#)

Product Environment Compliance

Compliance

GADSL/IMDS	Not Relevant
China RoHS	
EU ELV	Not Relevant
Low-Halogen Status	Low-Halogen per IEC 61249-2-21
REACH SVHC	Not Contained per D(2022)4187-DC (10 June 2022)
EU RoHS	Compliant per EU 2015/863

[Multiple Part Product Compliance Statements](#)

- Eu RoHS
- REACH SVHC

- Low-Halogen

Multiple Part Industry Compliance Documents

- IPC 1752A Class C
- IPC 1752A Class D
- Molex Product Compliance Declaration
- IEC-62474
- chemSHERPA (xml)

EU RoHS Certificate of Compliance

Part Details

General

Status	Active
Category	High-Speed I/O Connectors
Series	76044
Description	Small Form-factor Pluggable Plus (SFP+) Stacked 2-by-1 Multi-Port Connector with 2 Inner Lightpipe Ports, EMI Metal Gasket, 40 Circuits, Tin (Sn) Tails
Application	Module-to-Board
Component Type	Receptacle
Product Name	SFP Plus,SFP+
Type	Pluggable
UPC	883906422936

Agency

CSA	LR19980
UL	E29179

Electrical

Current - Maximum per Contact	0.5A
Data Rate	10.0 Gbps, 28.0 Gbps
Grounding to Panel	None
Shield Type	EMI Gasket
Shielded	Yes
Voltage - Maximum	120V AC (RMS)/DC

Physical

Boot Color	N/A
Circuits Detail	40
Circuits (Loaded)	40
Circuits (maximum)	40
Color - Resin	Black, Clear (Blue Tint)
Durability (mating cycles max)	100
Flammability	94V-0
Gender	Female
Keying to Mating Part	None
Lock to Mating Part	Yes
Material - Metal	Brass, Phosphor Bronze
Material - Plating Mating	Gold
Material - Plating Termination	Tin
Material - Resin	High Temperature Thermoplastic, Polycarbonate
Net Weight	27.138/g
Number of Rows	2
Orientation	Right Angle
Packaging Type	Tray
Panel Mount	No
PC Tail Length	2.07mm
PCB Locator	Yes
PCB Retention	Yes
PCB Thickness - Recommended	1.57mm
Pitch - Mating Interface	0.80mm
Pitch - Termination Interface	0.80mm
Plating min - Mating	0.762µm
Plating min - Termination	0.762µm
Polarized to Mating Part	Yes
Polarized to PCB	Yes
Ports	2
Temperature Range - Operating	-40° to +85°C
Termination Interface Style	Through Hole - Compliant Pin

Waterproof / Dustproof	No
------------------------	----

Solder Process Data

Lead-Free Process Capability	N/A
------------------------------	-----

Application Tooling

Global

Description	Part Number
Extraction Tool, 2 x 1 Medium	<u>622029930</u>