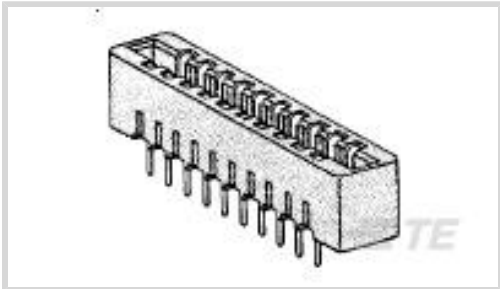




Connectors > PCB Connectors > Card Edge Connectors > Standard Edge Connectors



Connector System: **Board-to-Board**

Number of Positions: **6**

Centerline (Pitch): **3.96 mm [.156 in]**

Termination Method to Wire & Cable: **Solder Eyelet**

Number of Dual Positions: **6**

Features

Product Type Features

Connector System	Board-to-Board
Connector & Housing Type	Receptacle
Connector & Contact Terminates To	Printed Circuit Board

Configuration Features

Number of Positions	6
Number of Dual Positions	6
Number of Rows	2
Connector Contact Load Condition	Fully Loaded
PCB Mount Orientation	Vertical

Body Features

Primary Product Color	Green
-----------------------	-------

Contact Features

Contact Retention Within Housing	With
Contact Type	Socket
Contact Mating Area Plating Material Thickness	.76 µm
Contact Mating Area Plating Material	Gold
PCB Contact Termination Area Plating Material Finish	Bright
Contact Underplating Material	Nickel
PCB Contact Termination Area Plating Material	Tin



Contact Base Material	Phosphor Bronze
Contact Current Rating (Max)	5 A

Termination Features

Termination Post & Tail Length	3.81 mm[.15 in]
Termination Method to PCB	Through Hole - Solder
Termination Method to Wire & Cable	Solder Eyelet

Mechanical Attachment

Mating Retention	Without
Mating Alignment	Without
Contact Retention Type Within Housing	Locking Lance
PCB Mount Alignment	Without
PCB Mount Retention	Without
Connector Mounting Type	Board Mount

Housing Features

Centerline (Pitch)	3.96 mm[.156 in]
Housing Material	Glass-Filled Polyester

Dimensions

Card Slot Depth	7.49 mm[.29 in]
Connector Height	11.68 mm[.46 in]
Row-to-Row Spacing	5.08 mm[.2 in]

Usage Conditions

Operating Temperature Range	-55 – 105 °C[-67 – 221 °F]
-----------------------------	----------------------------

Operation/Application

Circuit Application	Power
---------------------	-------

Packaging Features

Packaging Quantity	300
Packaging Method	Carton

Product Compliance

For compliance documentation, visit the product page on [TE.com](#)>

EU RoHS Directive 2011/65/EU	Compliant
EU ELV Directive 2000/53/EC	Compliant



China RoHS 2 Directive MIIT Order No 32, 2016	No Restricted Materials Above Threshold
EU REACH Regulation (EC) No. 1907/2006	Current ECHA Candidate List: JUNE 2024 (241) Candidate List Declared Against: JUNE 2024 (241) Does not contain REACH SVHC
Halogen Content	Not Low Halogen - contains Br or Cl > 900 ppm.
Solder Process Capability	Wave solder capable to 240°C

Product Compliance Disclaimer

This information is provided based on reasonable inquiry of our suppliers and represents our current actual knowledge based on the information they provided. This information is subject to change. The part numbers that TE has identified as EU RoHS compliant have a maximum concentration of 0.1% by weight in homogenous materials for lead, hexavalent chromium, mercury, PBB, PBDE, DBP, BBP, DEHP, DIBP, and 0.01% for cadmium, or qualify for an exemption to these limits as defined in the Annexes of Directive 2011/65/EU (RoHS2). Finished electrical and electronic equipment products will be CE marked as required by Directive 2011/65/EU. Components may not be CE marked. Additionally, the part numbers that TE has identified as EU ELV compliant have a maximum concentration of 0.1% by weight in homogenous materials for lead, hexavalent chromium, and mercury, and 0.01% for cadmium, or qualify for an exemption to these limits as defined in the Annexes of Directive 2000/53/EC (ELV). Regarding the REACH Regulation, the information TE provides on SVHC in articles for this part number is based on the latest European Chemicals Agency (ECHA) 'Guidance on requirements for substances in articles' posted at this URL: <https://echa.europa.eu/guidance-documents/guidance-on-reach>

Compatible Parts

TE Part # 650025-2
KEY PLUG-SHORT

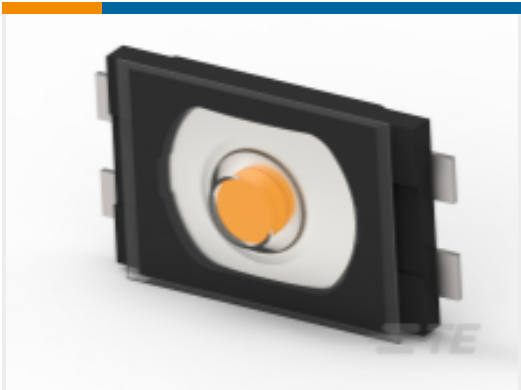
Customers Also Bought

TE Part #3-643816-4
04P MTA100 CONN ASSY POL RIB

TE Part #6609116-5
10EHG8-2=F8245TE Part #ANT-LTE-CER-T
Antenna CER LTE 37x5 SMT T&RTE Part #20009605-11
Compact Compression Load Cell



TE Part #1-1744426-4
Header Housing Assy, EP 2.5 RA, 14 Pos.



TE Part #2337224-1
TACT ULTRA TB 2.6X1.6X0.55 160GF



TE Part #11300095-00
SP231-WEL-1CH-0.2ML-ALU-P-3.58'-SP



TE Part #20026337-00
PM-SUR9CH-SIL-4.97"-2.72"-PRIB-4'-DB15

Documents

Product Drawings

CONN LOW PRO 6 POS 156X200C/L

English

CAD Files

3D PDF

3D

Customer View Model

ENG_CVM_CVM_7-530666-1_P.2d_dxf.zip

English

Customer View Model

ENG_CVM_CVM_7-530666-1_P.3d_igs.zip

English

Customer View Model

ENG_CVM_CVM_7-530666-1_P.3d_stp.zip

English

By downloading the CAD file I accept and agree to the [Terms and Conditions](#) of use.

Product Specifications

Product Specification

English

Agency Approvals

UL Report

English