

REFERENCE SPECIFICATIONS

-NFC 93425 (in compliance with HE 507)

PHYSICAL CHARACTERISTICS

-INSULATOR MATERIAL: THERMOPLASTIC UL94V0

-CONTACT MATERIAL: BRASS
GOLD OVER NICKEL

-ACCESSORIES: STEEL FOR BRACKETS
Cadmium plated, yellow passivation

-SHELLS: STEEL
Cadmium plated, yellow passivation

ELECTRICAL CHARACTERISTICS

-NOMINAL CURRENT: 7.5A (SIGNAL CONTACT)

-CONTACT RESISTANCE: ≤ 7.3 m Ohms(SIGNAL)

-CONTACT/CONTACT : ≥ 1000 V

-CONTACT/GROUND : ≥ 1200 V

-INSULATION RESISTANCE: ≥ 5000 MOhms

ENVIRONMENTAL CHARACTERISTICS

- CLIMATIC CATEGORY: 55/125/21

TEMPERATURE RANGE -55°C TO +125°C

DAMP HEAT STEADY STATE 56 DAYS

SALT SPRAY 48 HOURS

Series

DBML13W3P500MN

Shell size: **E A B C D**
(see sheet 3)

M :Characteristics
for the DM serie

Front accessory definition
(see sheet 2)

blank :without accessory

L :threaded insert M3

O :threaded insert UNC 4-40

V :female screw UNC 4-40

Layout of contacts (see sheet 3)

Contacts

P :Pin

Termination type

5 Right angle/Europe standard

Plating

00 Right angle 500 matings/unmatings

43 Right angle 500 matings/unmatings
for harsh environment

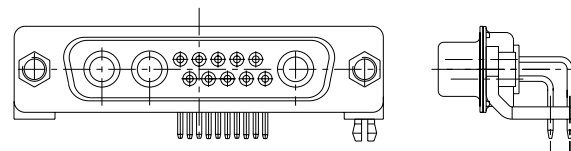
PCB accessories definition(see sheet 2)

blank :Plastic brackets




C :Without brackets

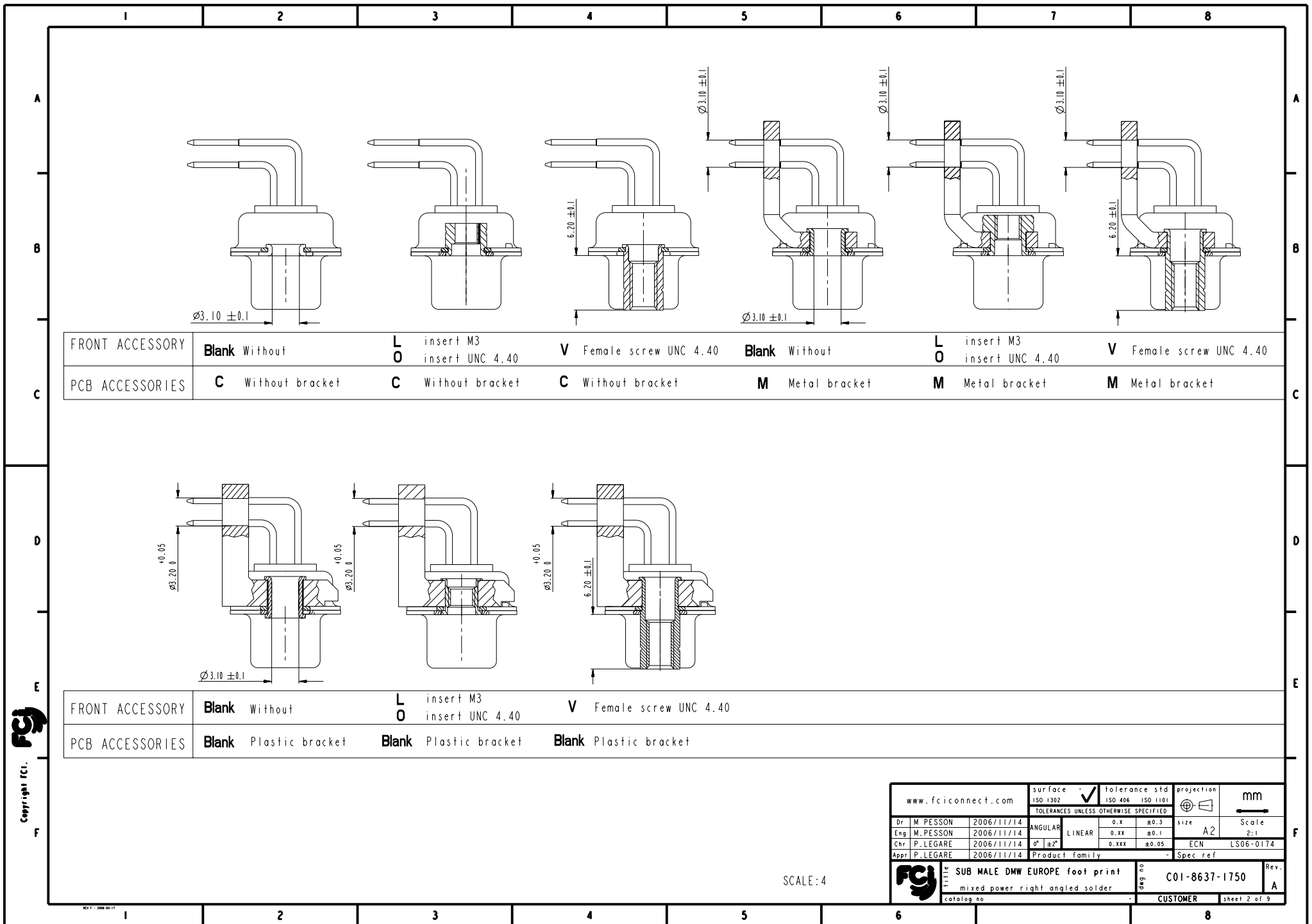
M :Metal brackets

N :Obligatory indication for HE 507



13W3 FOR EXAMPLE

www.fciconnect.com				surface <input checked="" type="checkbox"/> tolerance std ISO 1302 ISO 406 ISO 1101			projection 		mm 	
TOLERANCES UNLESS OTHERWISE SPECIFIED										
Dr	M. PESSON	2006/11/14	ANGULAR	0.X	±0.3	size	A2	Scale	2:1	
Eng	M. PESSON	2006/11/14	LINEAR	0.XX	±0.1	ECN	LS06-0174			
Chr	P. LEGARE	2006/11/14	0° ±2°	0.XXX	±0.05	Product family	-	Spec ref		
Appr	P. LEGARE	2006/11/14								
			SUB MALE DMW EUROPE foot print			deg no		C01-8637-1750		Rev
			mixed power right angled solder							A
catag no						CUSTOMER			sheet 1 of 9	






shell size LAYOUTS
xWx

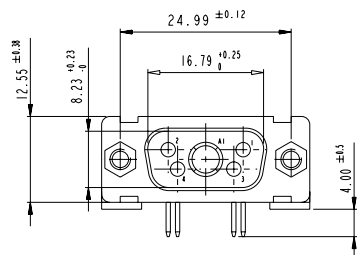
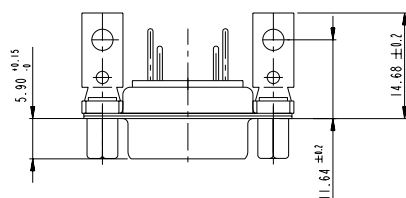
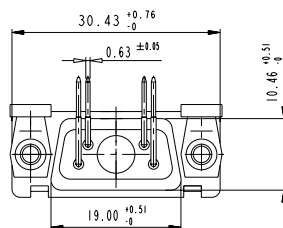
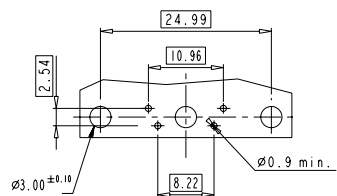
PART NUMBER	MATINGS/ UNMATINGS	FRONT ACCESSORY	PCB ACCESSORIES
D*MxWxP500CN	500	without	without
D*MLxWxP500CN	500	insert M3	without
D*MOxWxP500CN	500	insert UNC 4.40	without
D*MVxWxP500CN	500	female screw UNC 4.40	without
D*MxWxP500MN	500	without	metal bracket
D*MLxWxP500MN	500	insert M3	metal bracket
D*MOxWxP500MN	500	insert UNC 4.40	metal bracket
D*MVxWxP500MN	500	female screw UNC 4.40	metal bracket
D*MxWxP500N	500	without	plastic bracket
D*MLxWxP500N	500	insert M3	plastic bracket
D*MOxWxP500N	500	insert UNC 4.40	plastic bracket
D*MVxWxP500N	500	female screw UNC 4.40	plastic bracket

PART NUMBER	MATINGS/ UNMATINGS	FRONT ACCESSORY	PCB ACCESSORIES
D*MxWxP543CN	500	without	without
D*MLxWxP543CN	500	insert M3	without
D*MOxWxP543CN	500	insert UNC 4.40	without
D*MVxWxP543CN	500	female screw UNC 4.40	without
D*MxWxP543MN	500	without	metal bracket
D*MLxWxP543MN	500	insert M3	metal bracket
D*MOxWxP543MN	500	insert UNC 4.40	metal bracket
D*MVxWxP543MN	500	female screw UNC 4.40	metal bracket
D*MxWxP543N	500	without	plastic bracket
D*MLxWxP543N	500	insert M3	plastic bracket
D*MOxWxP543N	500	insert UNC 4.40	plastic bracket
D*MVxWxP543N	500	female screw UNC 4.40	plastic bracket

E 5W1
A 11W1
A 7W2
B 21W1
B 17W2
B 13W3
B 9W4
C 25W3
C 21WA4
C 27W2
D 47W1
D 24W7
D 36W4

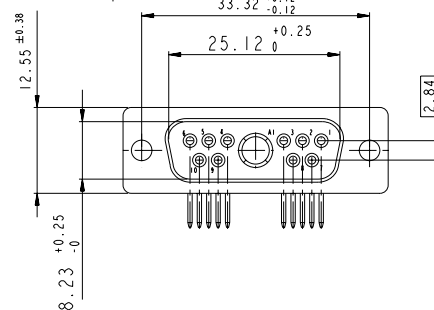
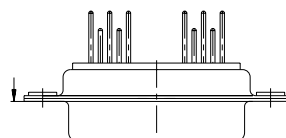
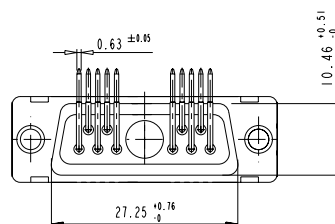
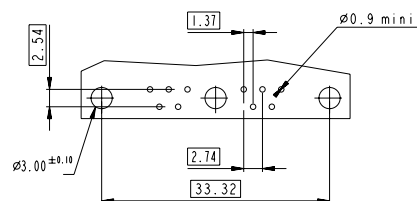
www.fciconnect.com		surface - <input checked="" type="checkbox"/> ISO 1302		tolerance std <input checked="" type="checkbox"/> ISO 406 <input type="checkbox"/> ISO 1101		projection 		mm 	
TOLERANCES UNLESS OTHERWISE SPECIFIED									
Dr	M. PESSON	2006/11/14	ANGULAR	0.X	±0.3	size	A2	Scale	2:1
Eng	M. PESSON	2006/11/14	LINEAR	0.XX	±0.1	ECN	LS06-0174		
Chr	P. LEGARE	2006/11/14	0° ±2°	0.XXX	±0.05				
Appr	P. LEGARE	2006/11/14	Product family		- Spec ref				
			SUB MALE DMW EUROPE foot print				deg no		C01-8637-1750
			mixed power right angled solder				Rev.		A
catalog no			CUSTOMER				sheet 3 of 9		

LAYOUT AND CONNECTOR DIMENSIONS

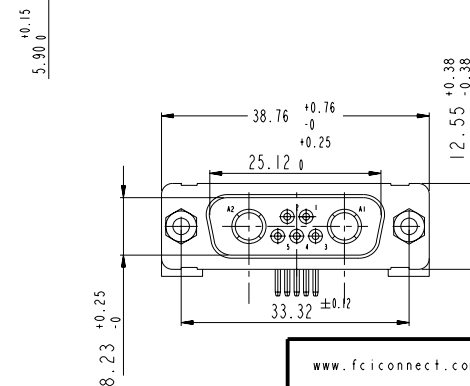
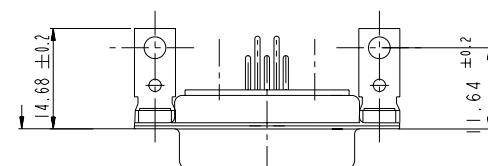
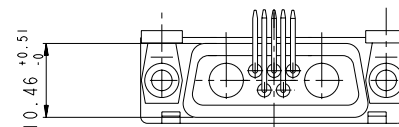
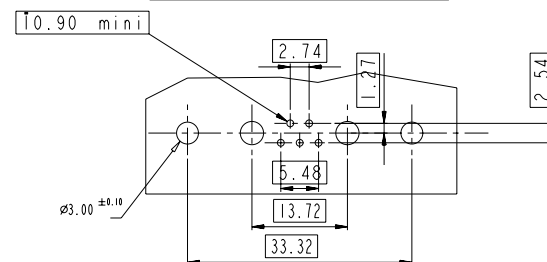


Floating signal contacts

LAYOUT AND CONNECTOR DIMENSIONS

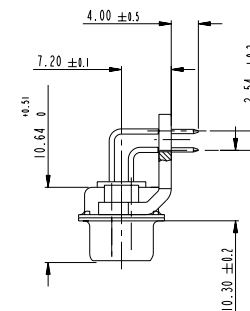


LAYOUT AND CONNECTOR DIMENSIONS

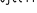




SIDE VIEW FOR ALL LAYOUTS

E - A - B - C

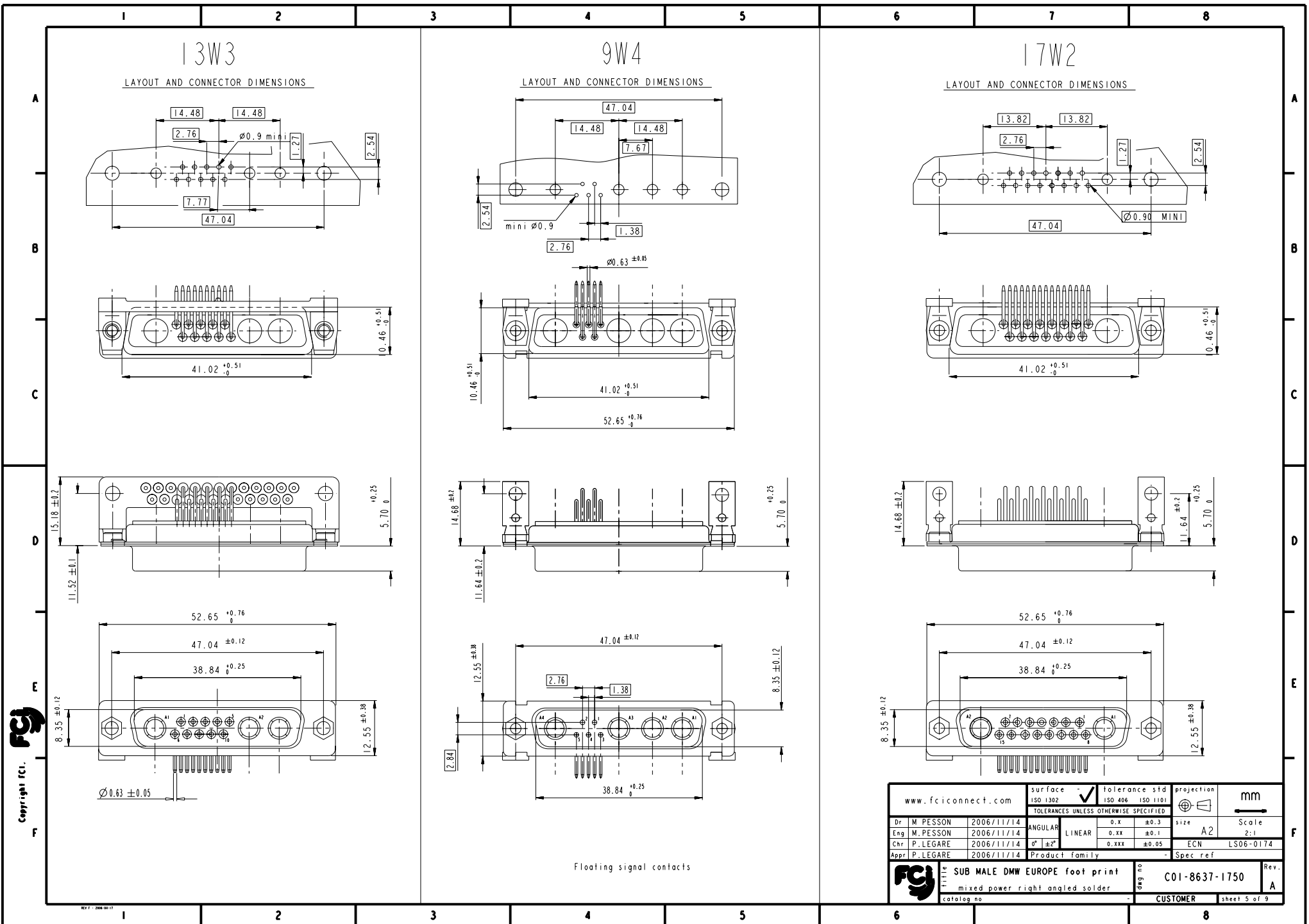


Copyright FCI.

www.fciconnect.com			surface <input checked="" type="checkbox"/> tolerance std ISO 1302 ISO 406 ISO 1101			projection 		mm 	
TOLERANCES UNLESS OTHERWISE SPECIFIED									
Dr	M. PESSON	2006/11/14	ANGULAR	LINEAR	0.x	±0.3	size	A2	Scale
Eng	M. PESSON	2006/11/14			0.XX	±0.1			2:1
Chr	P. LÉGARÉ	2006/11/14	0° ±2°		0.XXX	±0.05	ECN	LS06-0174	
Appr	P. LÉGARÉ	2006/11/14	Product family				-	Spec ref	



title	SUB MALE DMW EUROPE foot print	drawing no	C01-8637-1750	Rev	A
	mixed power right angled solder				
catalog no			CUSTOMER	sheet 4 of 9	



LAYOUT AND CONNECTOR DIMENSIONS

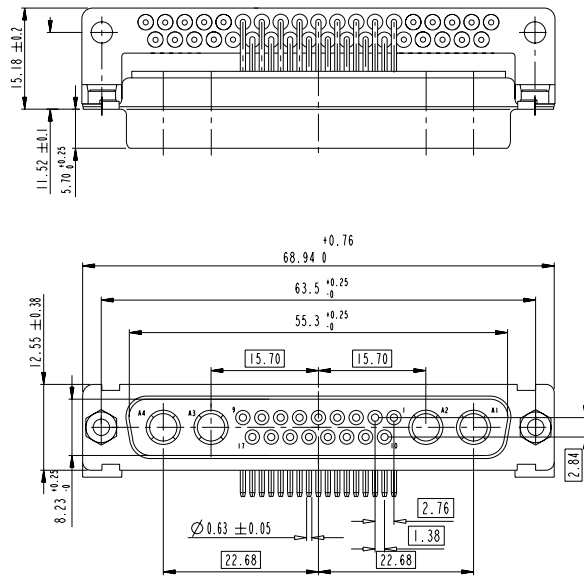
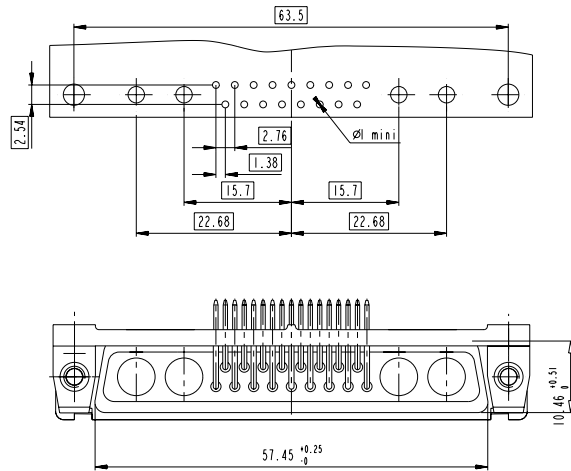


LAYOUT AND CONNECTOR DIMENSIONS



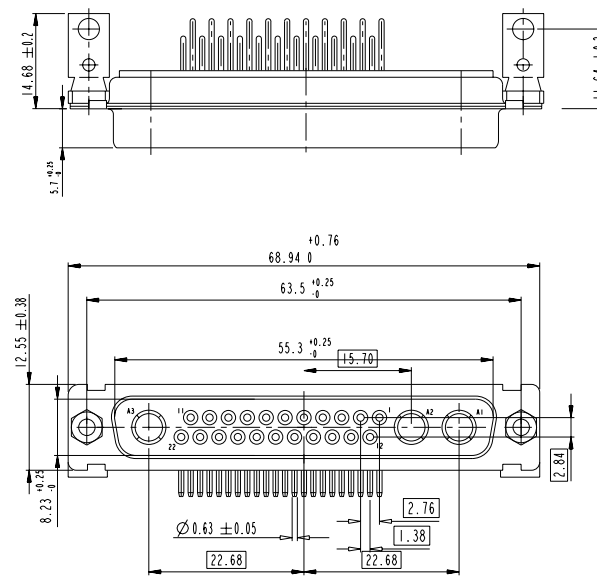
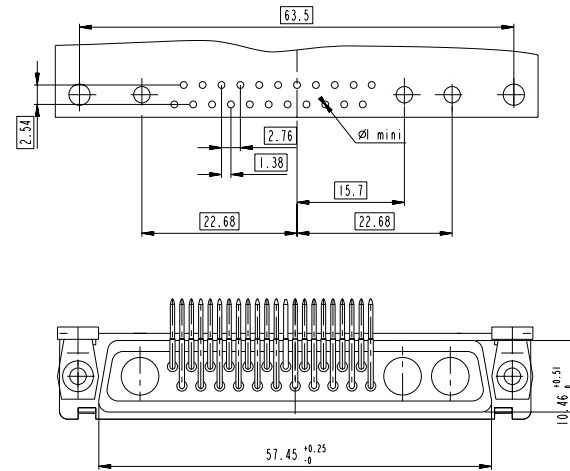
21WA4

LAYOUT AND CONNECTOR DIMENSIONS

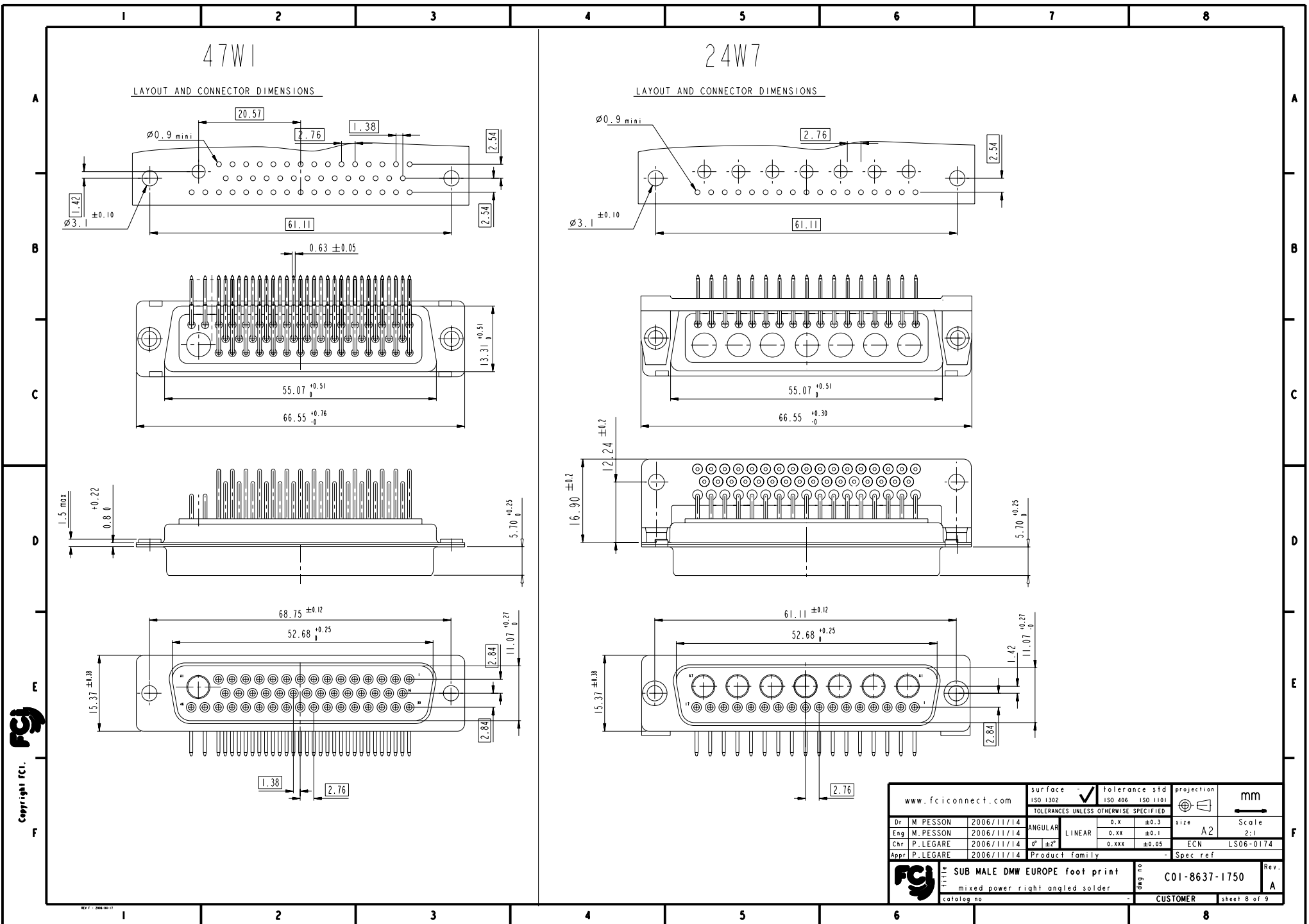


25W3

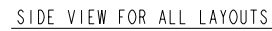
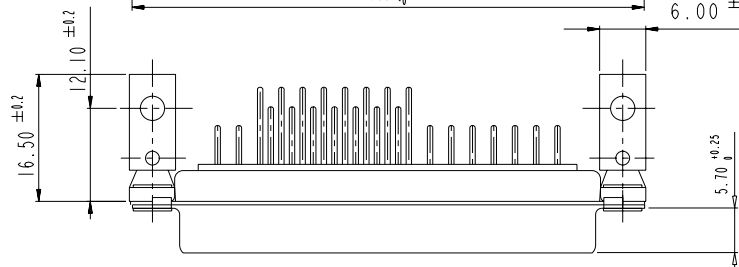
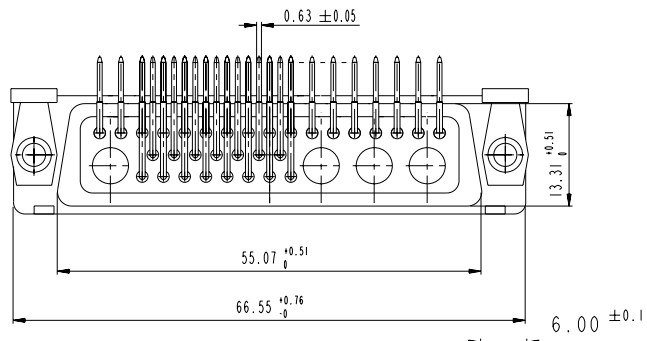
LAYOUT AND CONNECTOR DIMENSIONS



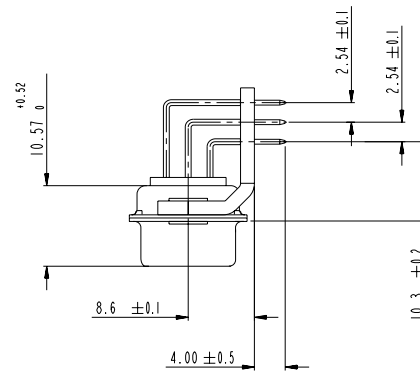
www.fciconnect.com		surface	ISO 1302	tolerance std	ISO 406	ISO 1101	projection	mm
		TOLERANCES UNLESS OTHERWISE SPECIFIED					size	Scale
Dr	M. PESSON	2006/11/14	ANGULAR	0.X	± 0.3		A2	2:1
Eng	M. PESSON	2006/11/14	LINEAR	0.XX	± 0.1		ECN	LS06-0174
Chr	P. LEGARE	2006/11/14	0° $\pm 2^\circ$	0.XXX	± 0.05		Spec. ref	
Appr	P. LEGARE	2006/11/14	Product family					
SUB MALE DMW EUROPE foot print		mixed power right angled solder		C01-8637-1750		Rev.		A
catalog no		CUSTOMER		sheet 7 of 9				






LAYOUT AND CONNECTOR DIMENSIONS



C



Copyright FCI.

www.fciconnect.com			surface - <input checked="" type="checkbox"/> tolerance std ISO 1302 ISO 406 ISO 1101		projection 		mm 	
TOLERANCES UNLESS OTHERWISE SPECIFIED								
Dr	M.PESSON	2006/11/14	ANGULAR	LINEAR	0.X ±0.3	size	A2	Scale 2:1
Eng	M.PESSON	2006/11/14			0.XX ±0.1			
Chr	P.LEGARE	2006/11/14	0° ±2°		0.XXX ±0.05	ECN	LS06-0174	
Appr	P.LEGARE	2006/11/14	Product family			- Spec ref		
			SUD MALL DOW EUROPE foot print				C01-8637-1750	
mixed power right angled solder			catalog no		-		Rev. A	
title			tag no		-		CUSTOMER	
sheet 9 of 9								