

FL-PP-RJ45-SCC/SC045 - Patch panel



2904577

<https://www.phoenixcontact.com/us/products/2904577>

Please be informed that the data shown in this PDF document is generated from our online catalog. Please find the complete data in the user documentation. Our general terms of use for downloads are valid.



Cable sharing module, two RJ45 jacks with Ethernet assignment (cable outlet on the top) to 8 spring-cage connection terminal blocks, CAT5e, 10/100 Mbps, DIN rail mounting, IP20, option of shield contacting on DIN rail via jumpers

Product description

Ethernet patch panels enable quick and easy connection between the field cabling and control cabinet cabling. The passive termination panels are a convenient alternative to the on-site assembly of RJ45 connectors.

Your advantages

- Safe shield connection to ground potential
- CAT5e
- 10/100 Mbps
- Mounting on a DIN rail
- Cable sharing adapter
- Y adapter
- Easy use of one cable for various services
- Optional shield connection via jumpers

Commercial data

| | |
|--------------------------------------|---------------------|
| Item number | 2904577 |
| Packing unit | 1 pc |
| Minimum order quantity | 1 pc |
| Sales key | DN07 |
| Product key | DNC331 |
| Catalog page | Page 363 (C-6-2019) |
| GTIN | 4046356864541 |
| Weight per piece (including packing) | 99.7 g |
| Weight per piece (excluding packing) | 106.4 g |
| Customs tariff number | 85369010 |
| Country of origin | US |

FL-PP-RJ45-SCC/SC045 - Patch panel



2904577

<https://www.phoenixcontact.com/us/products/2904577>

Technical data

Notes

Note on application

| | |
|---------------------|-------------------------|
| Note on application | Only for industrial use |
|---------------------|-------------------------|

Product properties

| | |
|--------------|-------------|
| Product type | Patch panel |
|--------------|-------------|

Data management status

| | |
|------------------|----|
| Article revision | 03 |
|------------------|----|

Insulation characteristics: Air clearances and creepage distances

| | |
|----------------------|------------------|
| Insulation | Basic insulation |
| Overvoltage category | II |
| Pollution degree | 2 |

Electrical properties

Air clearances and creepage distances

| | |
|--------------------------|--------|
| Rated insulation voltage | 50 V |
| Rated surge voltage | 0.5 kV |

Interfaces

Data: Ethernet interface, 10/100Base-T(X) in accordance with IEEE 802.3

| | |
|--|---|
| Serial transmission speed | 10/100 Mbps |
| Connection method | Spring-cage connection |
| No. of channels | 1 |
| Pin assignment | 1, 2, 3, 6 4, 5, 7, 8 |
| Transmission length | 100 m (including patch cables) |
| Single conductor/terminal point, rigid | 0.2 mm ² ... 1.5 mm ² |
| Single-wire/terminal point, flexible | 0.2 mm ² ... 1 mm ² |
| Single-wire/terminal point, rigid AWG max. | 16 |
| Single-wire/terminal point, rigid AWG min. | 24 |

Data: Ethernet interface, 10/100Base-T(X) in accordance with IEEE 802.3

| | |
|-------------------|--------------------------|
| Connection method | RJ45 CAT5e |
| No. of channels | 1 |
| Pin assignment | 1, 2, 3, 6 1, 2, 3, 6 |

Dimensions

| | |
|--------|-------|
| Width | 56 mm |
| Height | 90 mm |

FL-PP-RJ45-SCC/SC045 - Patch panel



2904577

<https://www.phoenixcontact.com/us/products/2904577>

| | |
|-------|-------|
| Depth | 51 mm |
|-------|-------|

Material specifications

| | |
|-----------------|------------------|
| Color (Housing) | green (RAL 6021) |
|-----------------|------------------|

Cable/line

| | |
|-------------------------|----------------|
| External cable diameter | 6 mm ... 10 mm |
| Cable impedance | 100 Ω |

Mechanical properties

Mechanical data

| | |
|-----------------------------|-------|
| Insertion/withdrawal cycles | ≤ 200 |
|-----------------------------|-------|

Environmental and real-life conditions

Ambient conditions

| | |
|---------------------------------|------------------|
| Degree of protection | IP20 |
| Ambient temperature (operation) | -10 °C ... 50 °C |

Approvals

Corrosive gas test

| | |
|----------------|----------------------------------|
| Identification | ISA-S71.04-1985 G3 Harsh Group A |
|----------------|----------------------------------|

Standards and regulations

Air clearances and creepage distances

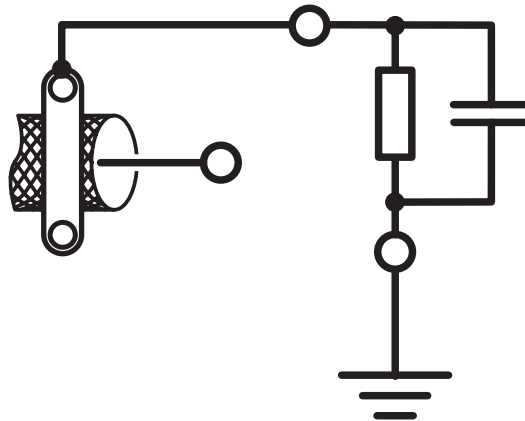
| | |
|-----------------------|--------------|
| Standards/regulations | DIN EN 50178 |
|-----------------------|--------------|

Mounting

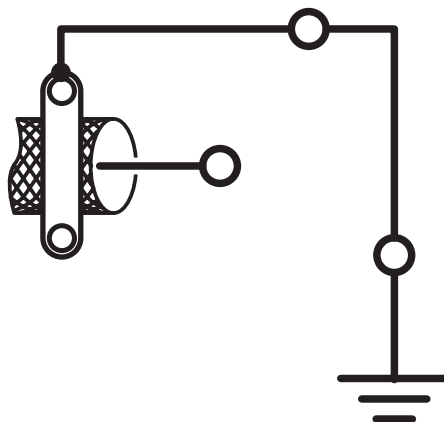
| | |
|-------------------|-------------------|
| Mounting type | DIN rail mounting |
| Mounting position | any |

Drawings

Circuit diagram



Circuit diagram



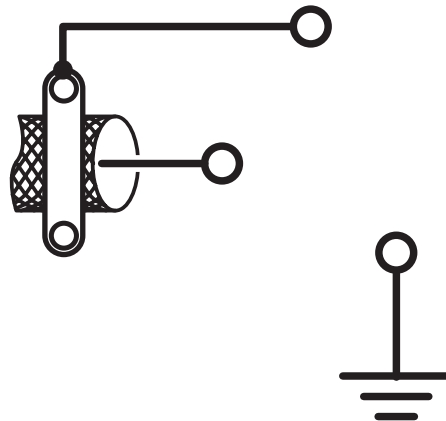
FL-PP-RJ45-SCC/SC045 - Patch panel

2904577

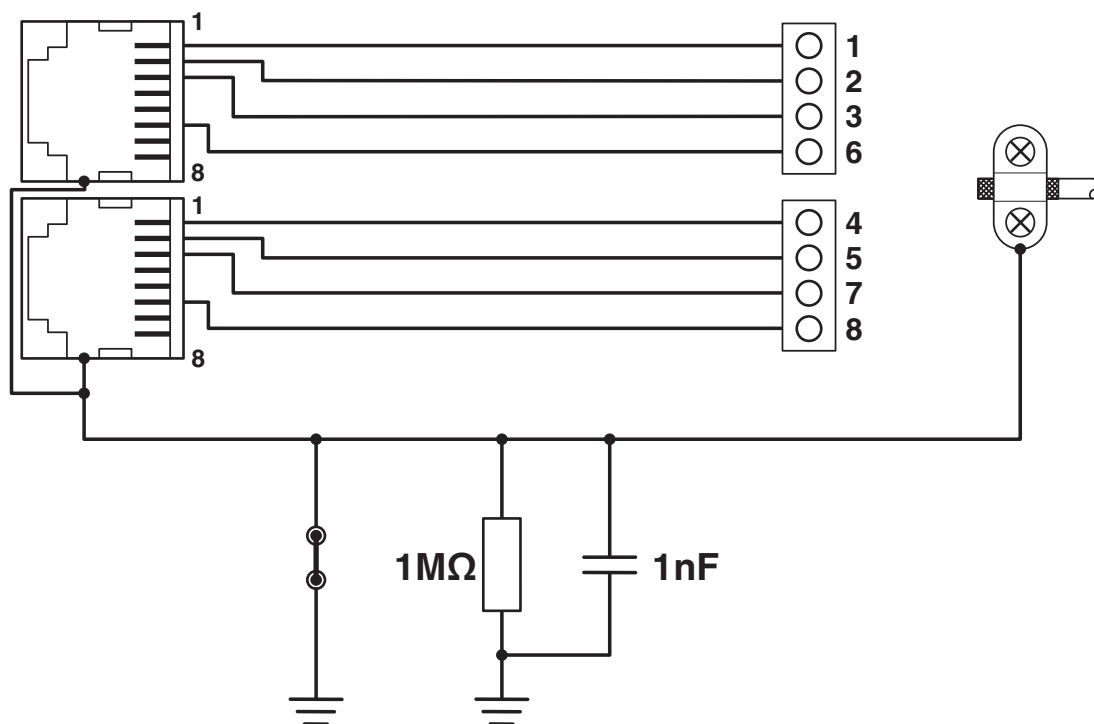
<https://www.phoenixcontact.com/us/products/2904577>



Circuit diagram



Circuit diagram



FL-PP-RJ45-SCC/SC045 - Patch panel



2904577

<https://www.phoenixcontact.com/us/products/2904577>

Classifications

ECLASS

| | |
|-------------|----------|
| ECLASS-11.0 | 19170112 |
| ECLASS-12.0 | 19170112 |
| ECLASS-13.0 | 19170112 |

ETIM

| | |
|----------|----------|
| ETIM 9.0 | EC001128 |
|----------|----------|

UNSPSC

| | |
|-------------|----------|
| UNSPSC 21.0 | 43223300 |
|-------------|----------|

FL-PP-RJ45-SCC/SC045 - Patch panel



2904577
<https://www.phoenixcontact.com/us/products/2904577>

Environmental product compliance

| | |
|---|--|
| EU RoHS | |
| Fulfills EU RoHS substance requirements | Yes, No exemptions |
| China RoHS | |
| Environment friendly use period (EFUP) | EFUP-E |
| | No hazardous substances above the limits |
| EU REACH SVHC | |
| REACH candidate substance (CAS No.) | No substance above 0.1 wt% |

Phoenix Contact 2024 © - all rights reserved
<https://www.phoenixcontact.com>

Phoenix Contact USA
586 Fulling Mill Road
Middletown, PA 17057, United States
(+717) 944-1300
info@phoenixcon.com