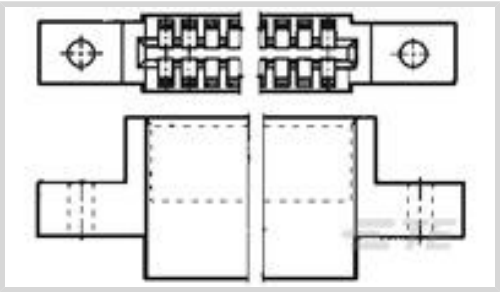




Connectors > PCB Connectors > Wire-to-Board Connectors > Wire-to-Board Connector Assemblies & Housings



Connector Product Type: **Housing**

Connector & Housing Type: **Receptacle**

Connector System: **Wire-to-Board**

Number of Positions: **10**

Centerline (Pitch): **2.54 mm [.1 in]**

Features

Product Type Features

Connector Product Type	Housing
Connector & Housing Type	Receptacle
Connector System	Wire-to-Board
Connector & Contact Terminates To	Printed Circuit Board

Configuration Features

Number of Dual Positions	10
Number of Positions	10
Number of Rows	2

Body Features

Primary Product Color	Black
-----------------------	-------

Contact Features

Contact Current Rating (Max)	5 A
------------------------------	-----

Termination Features

Termination Method to Wire & Cable	Crimp
------------------------------------	-------

Mechanical Attachment

Strain Relief	Without
Panel Mount Feature Type	Mounting Ears
Mating Retention	With



Connector Mounting Type	Board Mount
Housing Features	
Housing Material	Polyester GF
Centerline (Pitch)	2.54 mm[.1 in]
Dimensions	
	.75 in
Usage Conditions	
Operating Temperature Range	-55 – 105 °C[-67 – 221 °F]
Operation/Application	
Circuit Application	Power & Signal
Industry Standards	
Glow Wire Rating	Standard Part - Not Glow Wire
UL Flammability Rating	UL 94V-0
Packaging Features	
Packaging Quantity	400
Packaging Method	Box
Product Compliance	
For compliance documentation, visit the product page on TE.com>	
EU RoHS Directive 2011/65/EU	Compliant
EU ELV Directive 2000/53/EC	Compliant
China RoHS 2 Directive MIIT Order No 32, 2016	No Restricted Materials Above Threshold
EU REACH Regulation (EC) No. 1907/2006	Current ECHA Candidate List: JUNE 2024 (241) Candidate List Declared Against: JUNE 2024 (241) Does not contain REACH SVHC
Halogen Content	Not Low Halogen - contains Br or Cl > 900 ppm.
Solder Process Capability	Not applicable for solder process capability

Product Compliance Disclaimer

This information is provided based on reasonable inquiry of our suppliers and represents our current actual knowledge based on the information they provided. This information is subject to change. The part numbers that TE has identified as EU RoHS compliant have a maximum concentration of 0.1% by weight in homogenous materials for lead, hexavalent chromium, mercury, PBB, PBDE, DBP, BBP, DEHP, DIBP, and 0.01% for cadmium, or qualify for an exemption to these



limits as defined in the Annexes of Directive 2011/65/EU (RoHS2). Finished electrical and electronic equipment products will be CE marked as required by Directive 2011/65/EU. Components may not be CE marked. Additionally, the part numbers that TE has identified as EU ELV compliant have a maximum concentration of 0.1% by weight in homogenous materials for lead, hexavalent chromium, and mercury, and 0.01% for cadmium, or qualify for an exemption to these limits as defined in the Annexes of Directive 2000/53/EC (ELV). Regarding the REACH Regulation, the information TE provides on SVHC in articles for this part number is based on the latest European Chemicals Agency (ECHA) 'Guidance on requirements for substances in articles' posted at this URL: <https://echa.europa.eu/guidance-documents/guidance-on-reach>

Compatible Parts

TE Part # 583857-7
TWIN LEAF L.P. TERM.

TE Part # 2-583861-9
20 D/P CSTL HOUSING 100 C/L

Also in the Series | AMP 100CL

Wire-to-Board Connector Assemblies
& Housings(1)

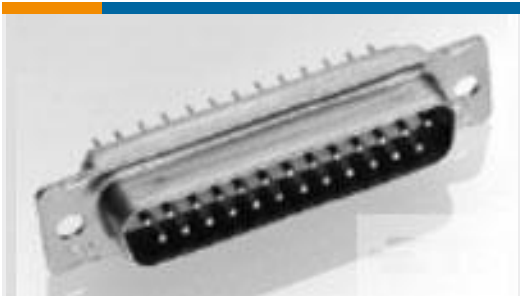
Customers Also Bought

TE Part #7-338069-6
MICRO-MATCH SMD FTE

TE Part #5748677-2
PLTD PLST CBL CLMP KIT,SZ 2

TE Part #5748677-3
PLTD PLST CBL CLMP KIT,SZ 3

TE Part #5748677-1
PLTD PLST CBL CLMP KIT,SZ 1



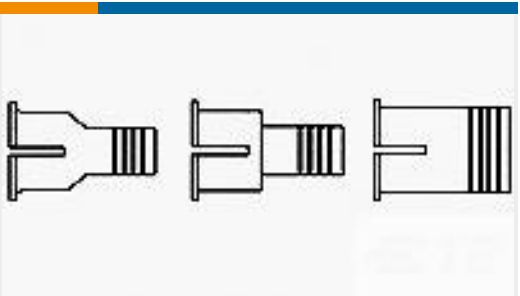
TE Part #204505-1
AMPLIMITE,ASY,PLUG,STD,90,3



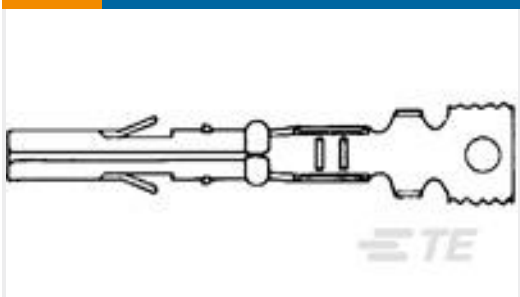
TE Part #3-1617029-2
HFW1131K04 = M39016/6-107L



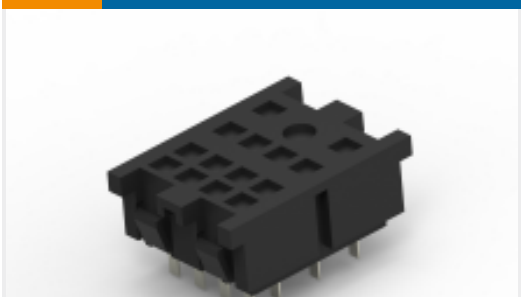
TE Part #D369-P99-NP0
369 9 WAY PLUG, NO CONTACTS, PIN



TE Part #7-745129-1
SHLDING FERRULE,PLTD,BULK PKG PIN



TE Part #794000-1
MR RECEPTACLE PTPPHBZ



TE Part #1419106-2
27E007=SOCKET,KH,14,PC,PHEN,BL

Documents

Product Drawings

10 POS. TWIN LEAF 100 C/L

English

CAD Files

Customer View Model

ENG_CVM_CVM_583861-7_AK.2d_dxf.zip

English

3D PDF

3D

Customer View Model

ENG_CVM_CVM_583861-7_AK.3d_igs.zip

English

Customer View Model

ENG_CVM_CVM_583861-7_AK.3d_stp.zip

English

By downloading the CAD file I accept and agree to the [Terms and Conditions](#) of use.

Product Specifications

Product Specification

English

Product Specification

English

Instruction Sheets

Instruction Sheet (U.S.)

English



Agency Approvals

UL

English