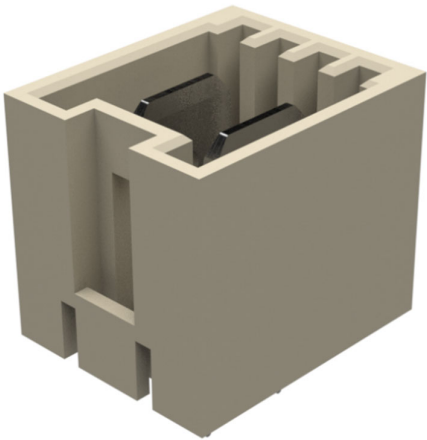




Part Number : 919991238
Product Description : GWconnect Metal Cable Gland - 5 Bar, for 14.00-21.00mm Cable, M32x1.5 Thread
Series Number : 93600
Status : Active
Product Category : Heavy-Duty Cable Glands
Engineering Number : 7000.6833.0




Documents & Resources

Drawings
[936000028_sd.pdf](#)

Product Environment Compliance

Compliance

GADSL/IMDS	Not Relevant
China RoHS	
EU ELV	Not Relevant
Low-Halogen Status	Low-Halogen per IEC 61249-2-21
REACH SVHC	Contains Lead per D(2024)4144-DC (27 June 2024)
EU RoHS	Compliant with Exemption 6(c) per EU 2015/863

Multiple Part Product Compliance Statements

- Eu RoHS
- REACH SVHC
- Low-Halogen

Multiple Part Industry Compliance Documents

- IPC 1752A Class C
- IPC 1752A Class D
- Molex Product Compliance Declaration
- IEC-62474

Part Details

General

Status	Active
Category	Heavy-Duty Cable Glands
Series	93600
Description	GWconnect Metal Cable Gland - 5 Bar, for 14.00-21.00mm Cable, M32x1.5 Thread
Cable Gland Type	IP68 - 5 Bar
IP Rating	IP68
Product Family	GWconnect Heavy Duty Connectors (HDC)
Product Name	GWconnect
UPC	887191822600

Physical

Cable Diameter	14.00-21.00mm
Material - Cable Gland	Brass
Material - Plating	Nickel
Net Weight	117.000/g
Packaging Type	Bag
Panel Cutout Diameter	32.50mm
Temperature Range - Operating	-40° to +125°C
Thread Size	M32x1.5
Thread Type	(M) Metric
Waterproof / Dustproof	Yes
Waterproof / Dustproof Type	IP68

Use with Part(s)

Description	Part Number
Use With	Industrial connector hoods and housings

Global

Description	Part Number
RAST 5 Power Semi-Automatic IDC Machine	<u>2166580200</u>