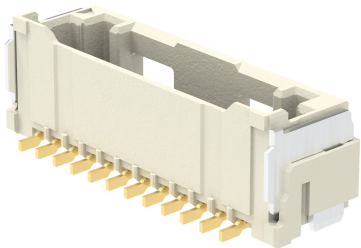




Part Number : [2132251270](#)
Product Description : 1.50mm Pitch CLIK-Mate Wire-to-Board PCB Receptacle, Single Row, Surface Mount, Vertical, 0.76µm Gold (Au) Plating, 12 Circuits, Natural
Series Number : 213225
Status : Active
Product Category : PCB Headers and Receptacles



Documents & Resources


Drawings
[2132251270_sd.pdf](#)

3D Models and Design Files
[2132251270.dxf](#)
[2132251270.pdf](#)
[2132251270_stp.zip](#)

Specifications
[2132259200-SPK-200.pdf](#)
[5025781004-PS-000.pdf](#)

Product Environment Compliance

Compliance

GADSL/IMDS	Not Relevant
China RoHS	
EU ELV	Not Relevant
Low-Halogen Status	Not Low-Halogen per IEC 61249-2-21
REACH SVHC	Not Contained per D(2024)4144-DC (27 June 2024)
EU RoHS	Compliant per EU 2015/863

Multiple Part Product Compliance Statements
- Eu RoHS
- REACH SVHC
- Low-Halogen

Multiple Part Industry Compliance Documents

- IPC 1752A Class C
- IPC 1752A Class D
- Molex Product Compliance Declaration
- IEC-62474
- chemSHERPA (xml)

EU RoHS Certificate of Compliance

Part Details

General

Status	Active
Category	PCB Headers and Receptacles
Series	213225
Description	1.50mm Pitch CLIK-Mate Wire-to-Board PCB Receptacle, Single Row, Surface Mount, Vertical, 0.76µm Gold (Au) Plating, 12 Circuits, Natural
Application	Signal, Wire-to-Board
Component Type	PCB Receptacle
Product Family	CLIK-Mate Wire-to-Board Connectors
Product Name	CLIK-Mate
UPC	193264240289

Electrical

Current - Maximum per Contact	2.0A
Voltage - Maximum	100V AC (RMS)/DC

Physical

Circuits (Loaded)	12
Circuits (maximum)	12
Color - Resin	Natural
Durability (mating cycles max)	30
Glow-Wire Capable	No
Guide to Mating Part	Yes
Keying to Mating Part	Yes
Lock to Mating Part	Yes

Material - Metal	Copper Alloy
Material - Plating Mating	Gold
Material - Resin	Polyamide
Net Weight	866.000/mg
Number of Rows	1
Orientation	Vertical
Packaging Type	Embossed Tape on Reel
PCB Locator	No
PCB Retention	Yes
Pitch - Mating Interface	1.50mm
Pitch - Termination Interface	1.50mm
Plating min - Mating	0.762µm
Plating min - Termination	0.762µm
Polarized to Mating Part	Yes
Polarized to PCB	No
Stackable	No
Temperature Range - Operating	-40° to +105°C
Termination Interface Style	Surface Mount

Mates With / Use With

Mates with Part(s)

Description	Part Number
1.50mm Pitch CLIK-Mate Single Row Plug Housings	<u>502578</u>