

Dual-Stage High Performance EMI Filter AMI-28 Series



- Rated current from 1 to 16 A
- Dual-stage filter with good low frequency attenuation
- High differential mode and common mode attenuation performance
- Optional medical version (Type B)
- Optional safety version (Type A)

Approvals:



Technical Specifications

Maximum continuous operating voltage: 250VAC, 50/60Hz

Operating frequency: DC to 400Hz

Rated currents: 1 to 16A @ 40°C max.

High potential test voltage: L → PE 3000VDC for 2 sec (standard types)

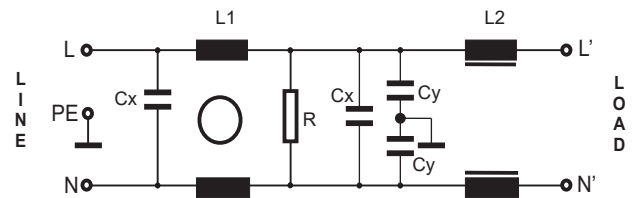
L → PE 3500VDC for 2 sec (B types)

L → N 1100VDC for 2 sec

Temperature range (operation and storage): -25°C to +100°C (25/100/21)

Design corresponding to: UL 1283.

CIRCUIT DIAGRAM:



Features and Benefits

- AMI-28 dual-stage filters are designed for easy and fast chassis mounting.
- The AMI-28 filters are also available as B versions with no Y-capacitors for medical applications as well as A versions with low capacitance for safety critical applications with requirements for low leakage currents.
- All filters provide a general purpose conducted attenuation performance, based on chokes with high saturation resistance and excellent thermal behavior.
- The AMI-28 filter are designed for good low frequency attenuation.
- Various terminal options allow you to select the desired connection style




Typical Applications

- Consumer electronics
- Computing & accessories
- Residential appliances
- Medical accessories
- Electronic data processing equipment
- Office automation equipment
- Industrial applications
- Power supplies
- Various noisy application requires good attenuation performance filter

General EMI Filter with High Attenuation Performance

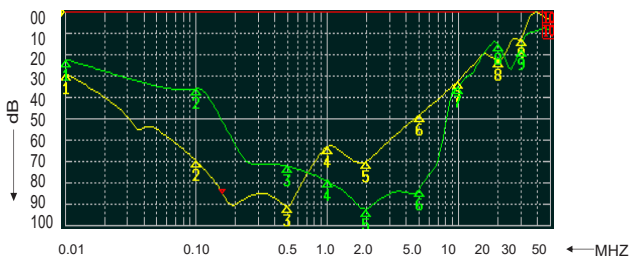


FILTER SELECTION TABLE

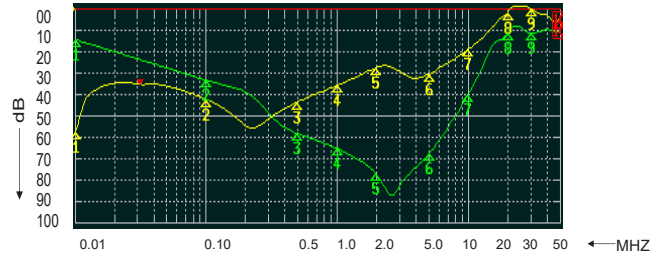
	Rated current @40°C (25°C) A	Leakage current @ 250VAC/50Hz @ 120VAC/60Hz mA	Inductance ΣL mH	Capacitance ΣCx µF	Capacitance ΣCy nF	Resistance ΣR KΩ	Connetion type		
									
AMI-28-1-X	1 (1.2)	0.73 (0.43)	22.4	0.66	9.4	1000	1	3	
AMI-28-3-X	3 (3.5)	0.73 (0.43)	9.96	0.94	9.4	470	1	3	
AMI-28-6-X	6 (6.9)	0.73 (0.43)	7.91	2	9.4	220	1	3	
AMI-28-10-X	10 (11.5)	0.73 (0.43)	4.56	2	9.4	220	1	3	
AMI-28-12-X	12 (13.8)	0.73 (0.43)	3.30	2	9.4	220	1	3	
AMI-28-16-X	16 (18.4)	0.73 (0.43)	2.84	2	9.4	220	1	3	6
AMI-28A-1-X	1 (1.2)	0.073 (0.04)	22.4	0.66	0.94	1000	1	3	
AMI-28A-3-X	3 (3.5)	0.073 (0.04)	9.96	0.94	0.94	470	1	3	
AMI-28A-6-X	6 (6.9)	0.073 (0.04)	7.91	2	0.94	220	1	3	
AMI-28A-10-X	10 (11.5)	0.073 (0.04)	4.56	2	0.94	220	1	3	
AMI-28A-12-X	12 (13.8)	0.073 (0.04)	3.30	2	0.94	220	1	3	
AMI-28A-16-X	16 (18.4)	0.073 (0.04)	2.84	2	0.94	220	1	3	6
AMI-28B-1-X	1 (1.2)	0.002 (0.001)	22.4	0.66		1000	1	3	
AMI-28B-3-X	3 (3.5)	0.002 (0.001)	9.96	0.94		470	1	3	
AMI-28B-6-X	6 (6.9)	0.002 (0.001)	7.91	2		220	1	3	
AMI-28B-10-X	10 (11.5)	0.002 (0.001)	4.56	2		220	1	3	
AMI-28B-12-X	12 (13.8)	0.002 (0.001)	3.30	2		220	1	3	
AMI-28B-16-X	16 (18.4)	0.002 (0.001)	2.84	2		220	1	3	6
Where X denotes connection style									

Insertion Loss: Common mode - —
 Differential mode - —

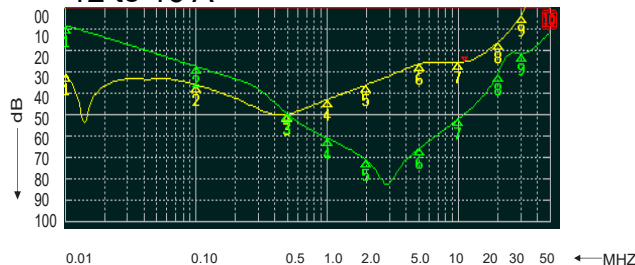
1 to 3 A



6A & 10A



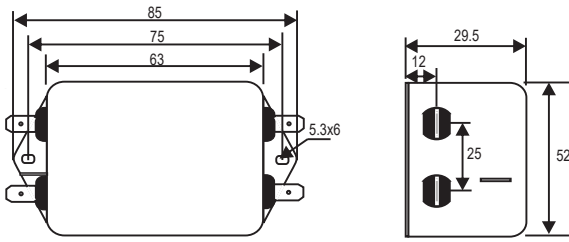
12 to 16 A



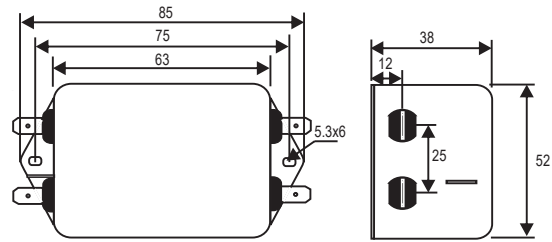
General EMI Filter with High Attenuation Performance

MECHANICAL DIMENSION (mm):

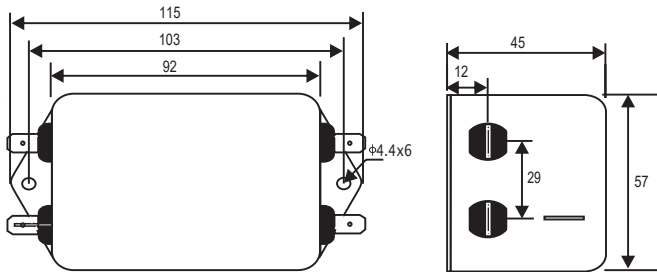
CONNECTION TYPE -1
1A



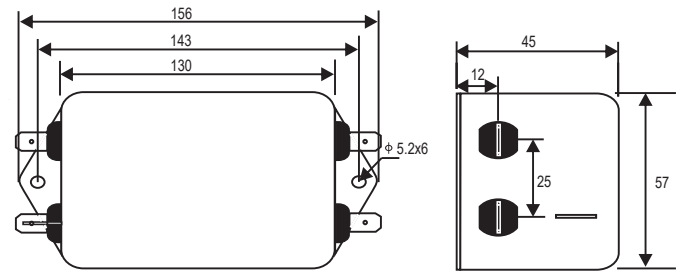
CONNECTION TYPE -1
3A



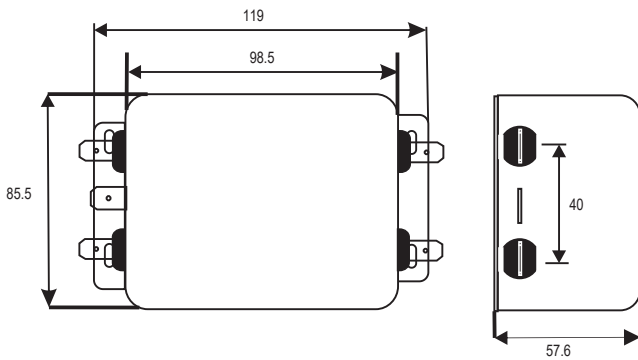
CONNECTION TYPE -1
6A



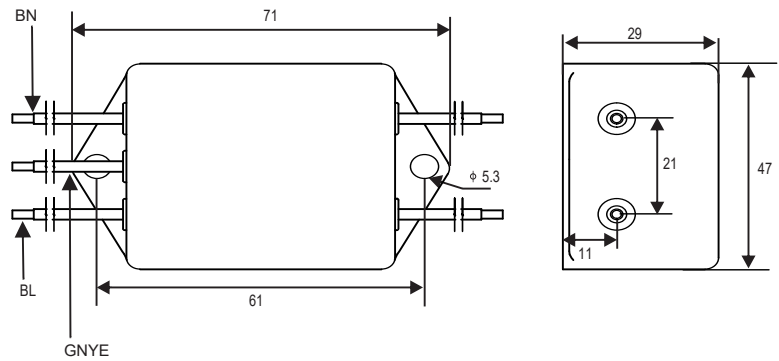
CONNECTION TYPE -1
10A & 12A



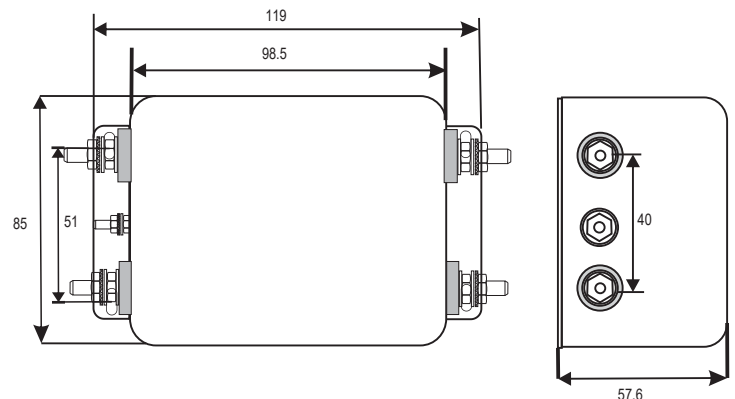
CONNECTION TYPE -1
16A



CONNECTION TYPE -3
16A



CONNECTION TYPE -6
16A



NOTE:

All Dimension in mm

- Connection type: 1 - Spade Terminals (6.3 x 0.8)
- 3 - Wire leads (140mm on both sides)
- 6 - Threaded Bolt Terminals (M4)