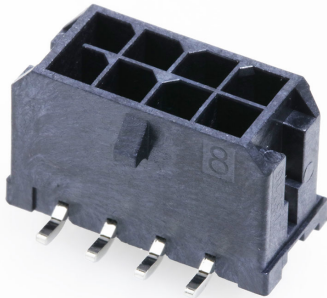




Part Number : [2182160630](#)
Product Description : Micro-Fit+ Vertical Header, Surface Mount, 3.00mm Pitch, Dual Row, 6 Circuits, Tin (Sn) Plating, Glow-Wire Capable, Press Clip, Black, Tape and Reel
Series Number : 218216
Status : Active
Product Category : PCB Headers and Receptacles



Documents & Resources

Drawings
[Drawing 2182160630_sd.pdf](#)
[Packaging Design Drawing 2182160001-PK-000.pdf](#)

3D Models and Design Files
[3D Model 2182160630_stp.zip](#)

Specifications
[Application Specification 2064600001-AS-000.pdf](#)
[Product Specification 2064600000-PS-000.pdf](#)
[Test Summary 2064600000-TS-000.pdf](#)
[Test Summary 2064600001-TS-000.pdf](#)

Product Environment Compliance

Compliance

GADSL/IMDS	Compliant with Exemption 44; 33
China RoHS	
EU ELV	Not Relevant
Low-Halogen Status	Low-Halogen per IEC 61249-2-21
REACH SVHC	Not Contained per D(2024)4144-DC (27 June 2024)
EU RoHS	Compliant per EU 2015/863

Multiple Part Product Compliance Statements
- Eu RoHS
- REACH SVHC
- Low-Halogen

Multiple Part Industry Compliance Documents

- IPC 1752A Class C
- IPC 1752A Class D
- Molex Product Compliance Declaration
- IEC-62474
- chemSHERPA (xml)

EU RoHS Certificate of Compliance

Part Details

General

Status	Active
Category	PCB Headers and Receptacles
Series	218216
Description	Micro-Fit+ Vertical Header, Surface Mount, 3.00mm Pitch, Dual Row, 6 Circuits, Tin (Sn) Plating, Glow-Wire Capable, Press Clip, Black, Tape and Reel
Application	Power, Wire-to-Board
Component Type	PCB Header
Product Family	Micro-Fit+ Connector System
Product Name	Micro-Fit+
UPC	195842887619

Electrical

Current - Maximum per Contact	12.5A
Voltage - Maximum	600V AC (RMS)/DC

Physical

Breakaway	No
Circuits (Loaded)	6
Circuits (maximum)	6
Color - Resin	Black
Durability (mating cycles max)	25
First Mate / Last Break	No
Glow-Wire Capable	Yes
Keying to Mating Part	None

Lock to Mating Part	Yes
Material - Metal	High Copper Alloy
Material - Plating Mating	Matte Tin
Material - Plating Termination	Matte Tin
Material - Resin	Liquid Crystal Polymer
Net Weight	1.150/g
Number of Rows	2
Orientation	Vertical
Packaging Type	Embossed Tape on Reel
PCB Retention	Yes
Pitch - Mating Interface	3.00mm
Pitch - Termination Interface	3.00mm
Polarized to Mating Part	Yes
Polarized to PCB	Yes
Shrouded	Yes
Temperature Range - Operating	-40° to +125°C
Termination Interface Style	Surface Mount

Mates With / Use With

Mates with Part(s)

Description	Part Number
Micro-Fit+ Dual Row Receptacle Housings	<u>206461</u>