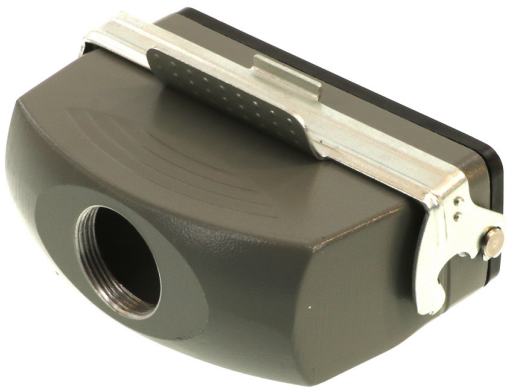




Part Number : 936013662
Product Description : GWconnect STD - Standard, Single Lever Coupler, Die-cast Aluminum, with 1 Lever, Top Entry, with Gasket, Size 24B «104x27», M32 Thread, High Construction, Grey
Series Number : 93601
Status : Active
Product Category : Heavy-Duty Connectors
Engineering Number : 7824.6464.5



Product Environment Compliance

Compliance

China RoHS	Not Reviewed
EU ELV	Not Reviewed
Low-Halogen Status	Not Reviewed
REACH SVHC	Not Reviewed
EU RoHS	Not Reviewed

Multiple Part Product Compliance Statements

- Eu RoHS
- REACH SVHC
- Low-Halogen

Multiple Part Industry Compliance Documents

- IPC 1752A Class C
- IPC 1752A Class D
- Molex Product Compliance Declaration
- IEC-62474
- chemSHERPA (xml)

EU RoHS Certificate of Compliance

Part Details

General

Status	Active
--------	--------

Category	Heavy-Duty Connectors
Series	93601
Description	GWconnect STD - Standard, Single Lever Coupler, Die-cast Aluminum, with 1 Lever, Top Entry, with Gasket, Size 24B «104x27», M32 Thread, High Construction, Grey
Component Type	Single Lever Coupler
IP Rating	IP66
Product Family	GWconnect Heavy Duty Connectors (HDC)
Product Name	GWconnect
Standard	ANSI/UL 50, ANSI/UL 50 E, CSA C22.2 No.94-1-2, EN 61984
Type	STD
UPC	887191852744

Agency

CSA	256883
UL	E249674

Electrical

Voltage - Maximum	500V
-------------------	------

Physical

Component Size	24B «104X27»
Entry Location	Top
Hood Coating	Polyester Powder
Hood Color	GREY RAL 7037
Lock to Mating Part	Yes
Material - Gasket	NBR
Material - Hood	Die-cast Aluminum
Material - Lever	Galvanized Steel
Number of Levers	1
Packaging Type	Bag
Thread Size	M32
Thread Type	(M) Metric

Use with Part(s)

Description	Part Number
Use With	Size 24B «104x27» S-D, S-DD, S-E, S-EE, S-EP, S-ES, S-HSB, S-ESHV, S-K, S-M, and S-EHV Inserts
