

ELR-TBUS-22,5-P - DIN rail bus connectors

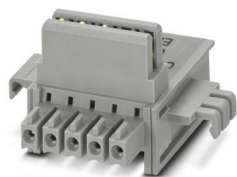


2203861

<https://www.phoenixcontact.com/us/products/2203861>

Please be informed that the data shown in this PDF document is generated from our online catalog. Please find the complete data in the user documentation. Our general terms of use for downloads are valid.

Special DIN rail connector only suitable for ELR H...-P and EM-...-P.



Commercial data

Item number	2203861
Packing unit	10 pc
Minimum order quantity	10 pc
Sales key	AC08
Product key	ACHACA
Catalog page	Page 26 (C-5-2019)
GTIN	4055626449685
Weight per piece (including packing)	6.54 g
Weight per piece (excluding packing)	6.54 g
Customs tariff number	85366990
Country of origin	DE

ELR-TBUS-22,5-P - DIN rail bus connectors



2203861

<https://www.phoenixcontact.com/us/products/2203861>

Technical data

Product properties

Product type	DIN rail connector
Type	DIN rail mounting

Material specifications

Color (Housing)	gray (RAL 7042)
-----------------	-----------------

ELR-TBUS-22,5-P - DIN rail bus connectors



2203861

<https://www.phoenixcontact.com/us/products/2203861>

Classifications

ECLASS

ECLASS-11.0	27460201
ECLASS-12.0	27460201
ECLASS-13.0	27460201

ETIM

ETIM 9.0	EC002637
----------	----------

UNSPSC

UNSPSC 21.0	39121400
-------------	----------

ELR-TBUS-22,5-P - DIN rail bus connectors



2203861
<https://www.phoenixcontact.com/us/products/2203861>

Environmental product compliance

EU RoHS	
Fulfills EU RoHS substance requirements	Yes, No exemptions
China RoHS	
Environment friendly use period (EFUP)	EFUP-E
	No hazardous substances above the limits
EU REACH SVHC	
REACH candidate substance (CAS No.)	No substance above 0.1 wt%

Phoenix Contact 2024 © - all rights reserved
<https://www.phoenixcontact.com>

Phoenix Contact USA
586 Fulling Mill Road
Middletown, PA 17057, United States
(+717) 944-1300
info@phoenixcon.com