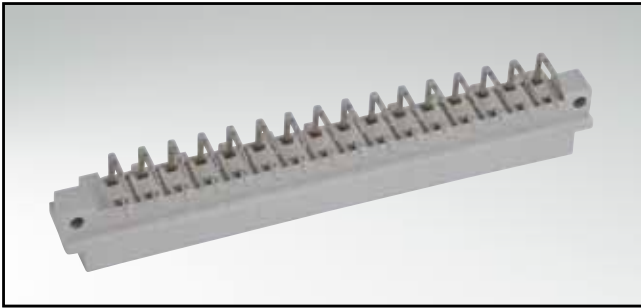


# TYPE D

Male connector – straight and angled – 16 and 32 positions

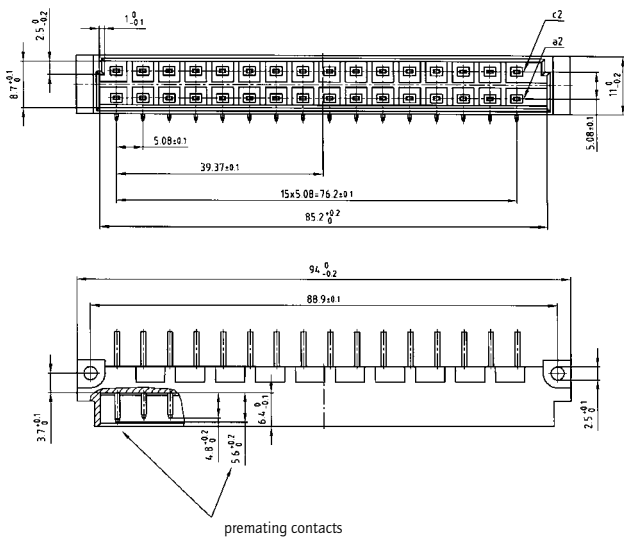


RoHS compliant

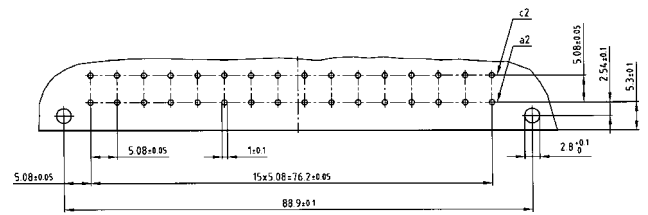
### DESCRIPTION

- Solder pin
- Quality class 3 (also available in quality class 2 or 1)
- premating contacts in row "a" available
- Special assembly on request

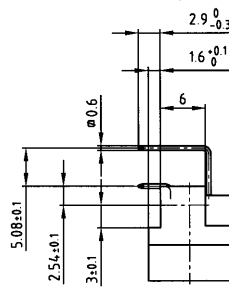
### PRODUCT DRAWING



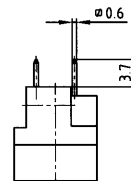
### PCB-hole pattern



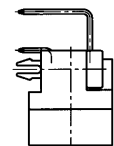
Solder pin angled



Solder pin straight



Solder pin angled with clip



### ORDER DATA

(Dim. = mm)

No. of Pos.	Row	• = contact, + = no contact				Solder pin angled	Solder pin straight	Solder pin angled with clip
		Pos.	2	4	6			
16	c		•	+	•	121 A 10639 X	121 A 10659 X	121 A 20979 X
	a		•	+	•			
32	c		•	•	•	121 A 10649 X	121 A 10669 X	121 A 20989 X
	a		•	•	•			

Clip for hole diameter 2.8 + 0.1 mm, PCB thickness = 1.6 mm

# Mouser Electronics

Authorized Distributor

Click to View Pricing, Inventory, Delivery & Lifecycle Information:

[Amphenol:](#)

[121A10649X](#) [121A10669X](#) [121A10639X](#) [121A10659X](#) [121A20989X](#) [121A20979X](#)