



## Specifications

Electrical Ratings	2A @ 24VDC 2A @ 125VAC 1A @ 250VAC	Operation Life	50,000 cycles typical
Sealing Degree	IP67	Dielectric Strength	2000Vrms min contact to contact 2000Vrms min contact to LED
Electrical Life	50,000 cycles typical	Insulation Resistance	≥ 100MΩ min
Contact Resistance	≤ 50mΩ initial	Operating Temperature	-40°C to +85°C
Actuation Force	550 ± 50gF	Storage Temperature	-40°C to +85°C
Actuation Travel	2.5 ± .3mm		

## Materials

Actuator	Stainless Steel or Anodized Aluminum
LED Lens	Polycarbonate (PC)
Threaded Body	Stainless Steel
Terminal Support	Polybutylene Terephthalate (PBT)
Inner Switch Body	Polycarbonate (PC)
Contacts	Silver Alloy
Terminals	Brass, Epoxy Sealed
Hardware	One Hex Nut & One “O” Ring Supplied

## Custom Capabilities Contact Factory

### Cable Assemblies



### Shine Through Symbols



### Custom Laser Etching



### Custom Plastic Convex Actuators



## Illuminated Anti-Vandal Pushbutton — 40mm

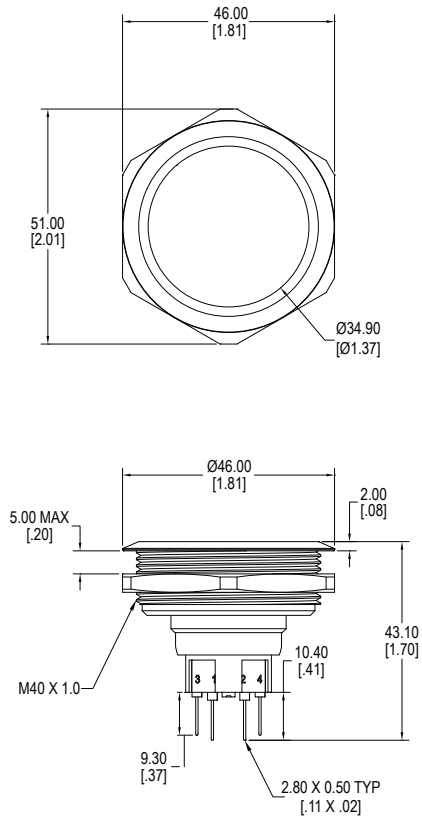
### Ordering Information

1. Series	DH40	1	N	B	S	B	12
DH40							
2. Number of Poles	1 = SPST NO + SPST NC 2 = DPST NO + DPST NC						
3. Bezel Style	Blank = Standard Bezel						
4. Latching Option	N = Momentary L = Latching						
5. Actuator Style	A = Flush actuator, non-illuminated B = Flush actuator, ring illuminated						
6. Actuator Finish	B = Black anodized aluminum G = Green anodized aluminum R = Red anodized aluminum S = Brushed stainless steel U = Blue anodized aluminum Y = Yellow anodized aluminum						
7. LED Color	Z = No LED R = Red Y = Yellow G = Green B = Blue W = White O = Orange  RO = Red / Orange dual LED RY = Red / Yellow dual LED RG = Red / Green dual LED RB = Red / Blue dual LED OY = Orange / Yellow dual LED OG = Orange / Green dual LED OB = Orange / Blue dual LED YG = Yellow / Green dual LED YB = Yellow / Blue dual LED GB = Green / Blue dual LED						
8. LED Voltage	Z = No LED N = No internal resistor in series with the LED 6 = 6V 12 = 12V 24 = 24V 110 = 110V 220 = 220V						
9. Terminal Option	Blank = .100" Quick Connect, standard						

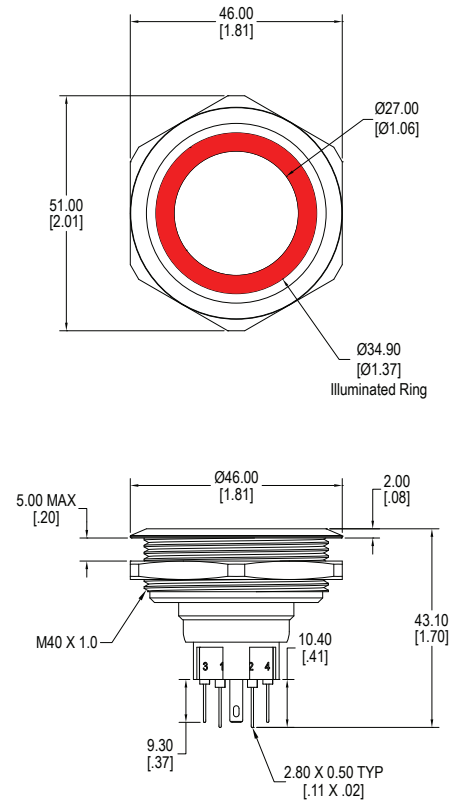
OPTIONAL Socket Housing available

## Dimensions

A Actuator

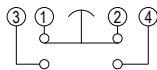


B Actuator

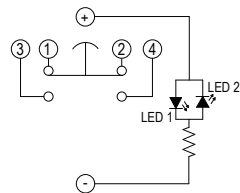


## Schematics

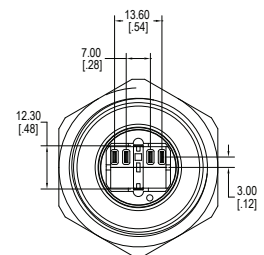
Single Pole, no LED



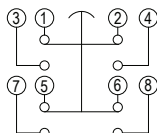
Single Pole, with LED



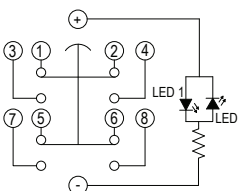
Single Pole Bottom View



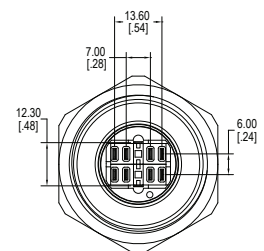
Double Pole, no LED



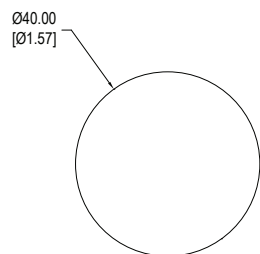
Double Pole, with LED



Double Pole Bottom View

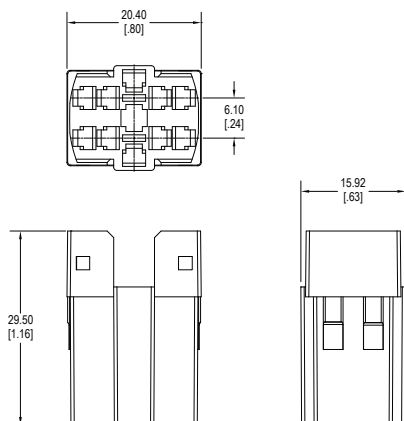


## Cutout

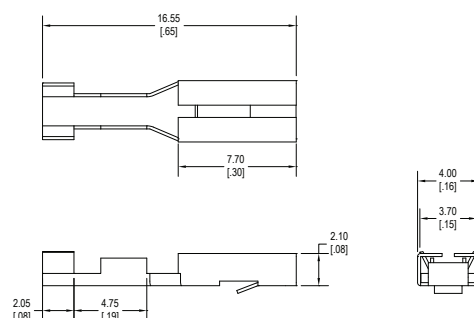


## Optional Terminal Block

SS2203



SS Terminal



## LED Characteristics

LED Ratings		Color						
		R	Y	G	B	O	W	Units
Reverse Voltage	$V_R$	5	5	5	5	5	5	V
Forward Current (peak)	$I_{FS}$	120	120	160	160	120	160	mA
Reverse Current $V_R = 5V$	$I_R$	10	10	10	10	10	10	$\mu A$
Power Dissipation	$P_T$	80	80	120	120	80	120	mW
Forward Voltage (typ) $I_F = 20mA$	$V_F$	2.1	2.1	3.3	3.3	2.0	3.0	V
Luminous Intensity, $I_F = 20mA$	$LI$	120	120	170	100	120	700	mcd