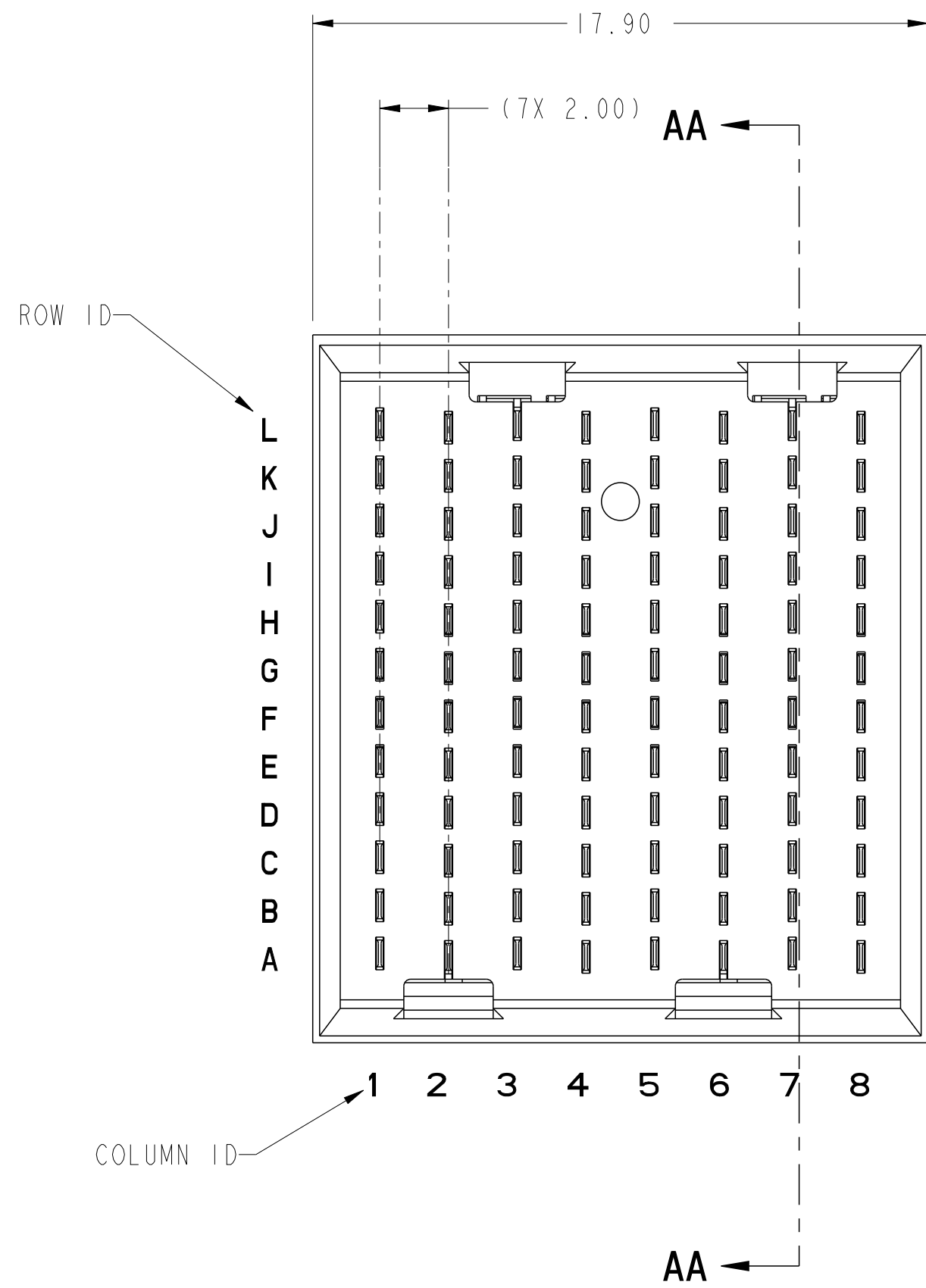


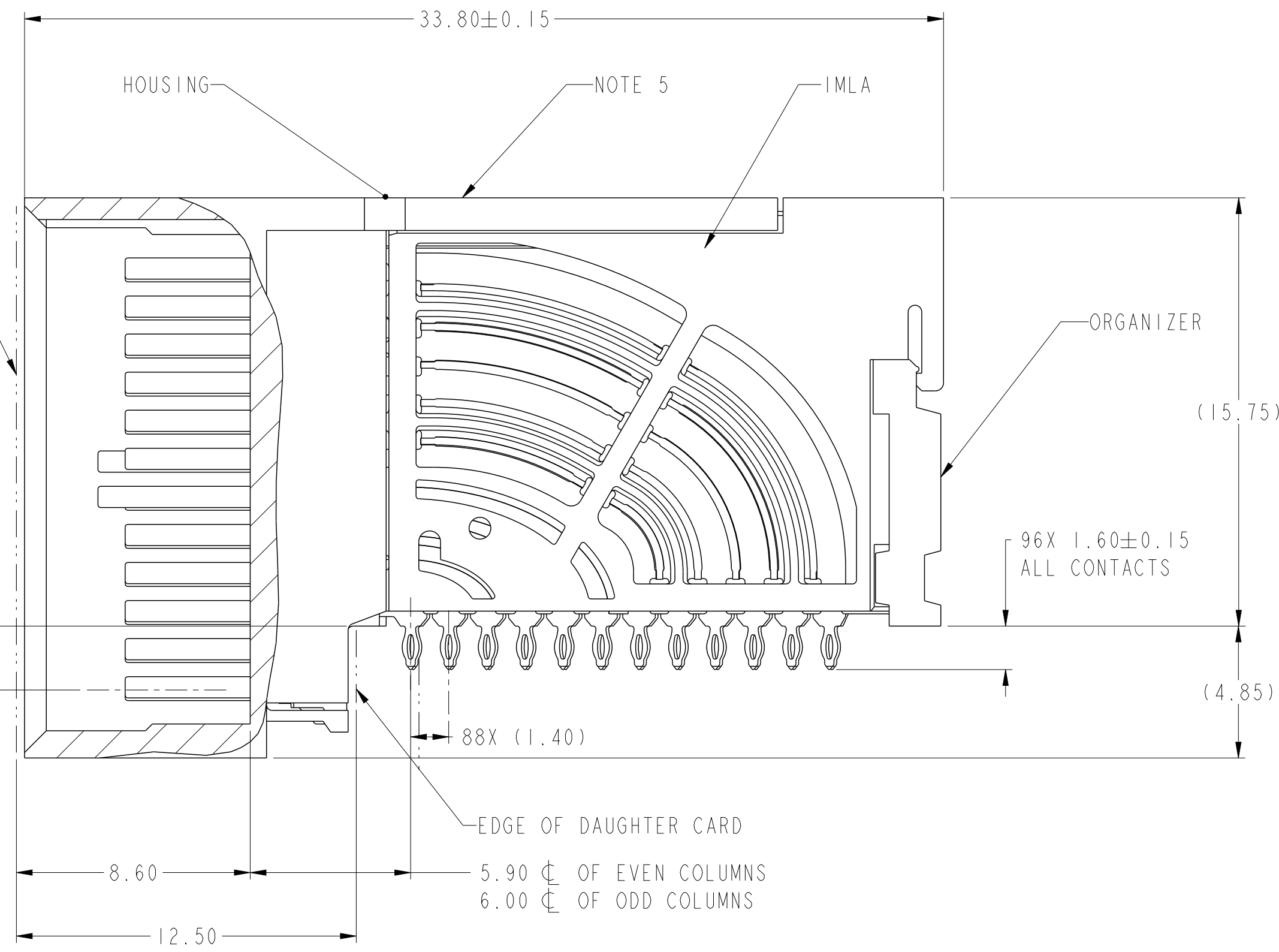
PRODUCT NUMBER
SEE SHEET 3



TOP SURFACE OF MOTHER BOARD

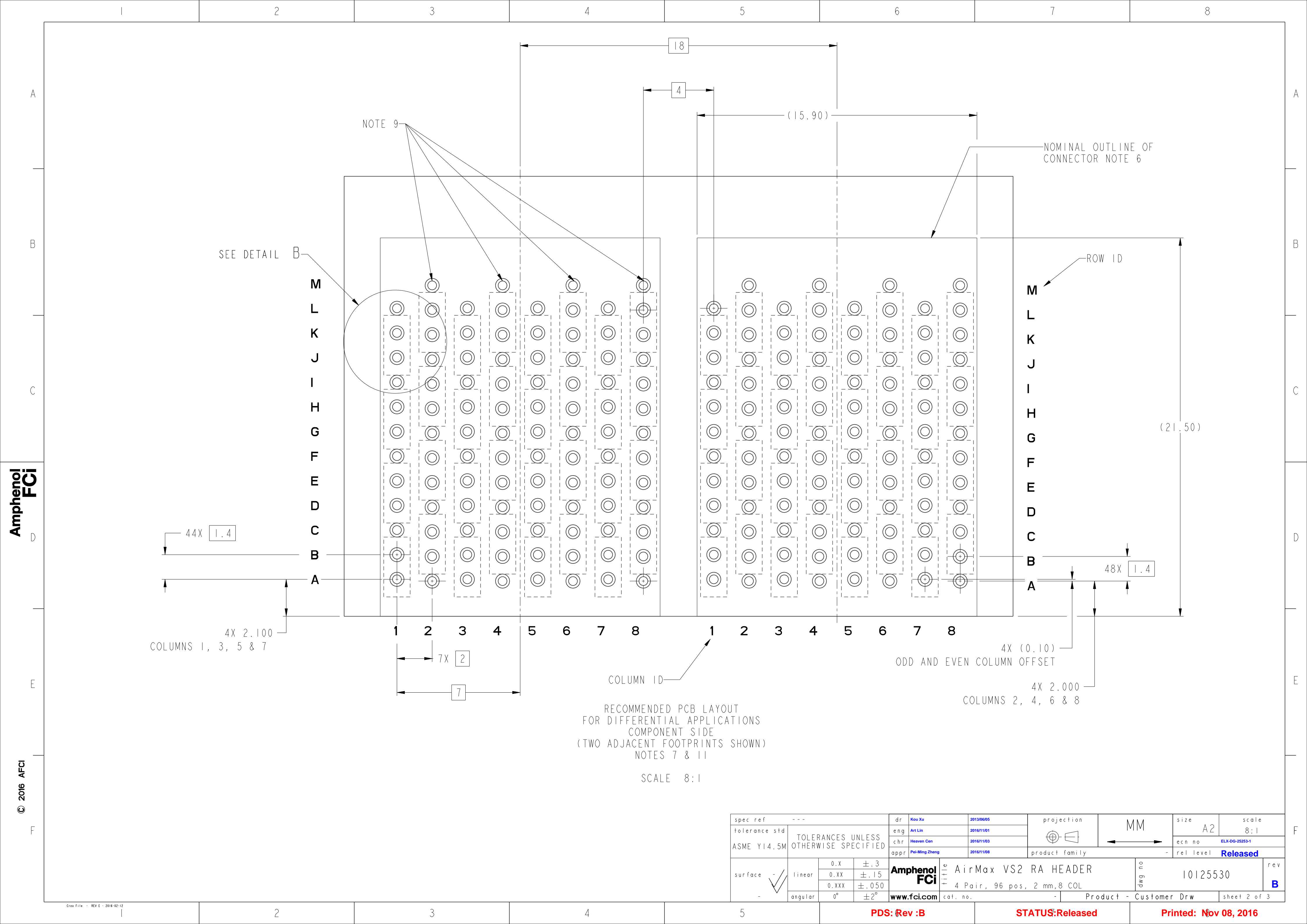
(20.60) TOP SURFACE OF DAUGHTER CARD

2.35 ϕ OF EVEN COLUMNS
2.25 ϕ OF ODD COLUMNS



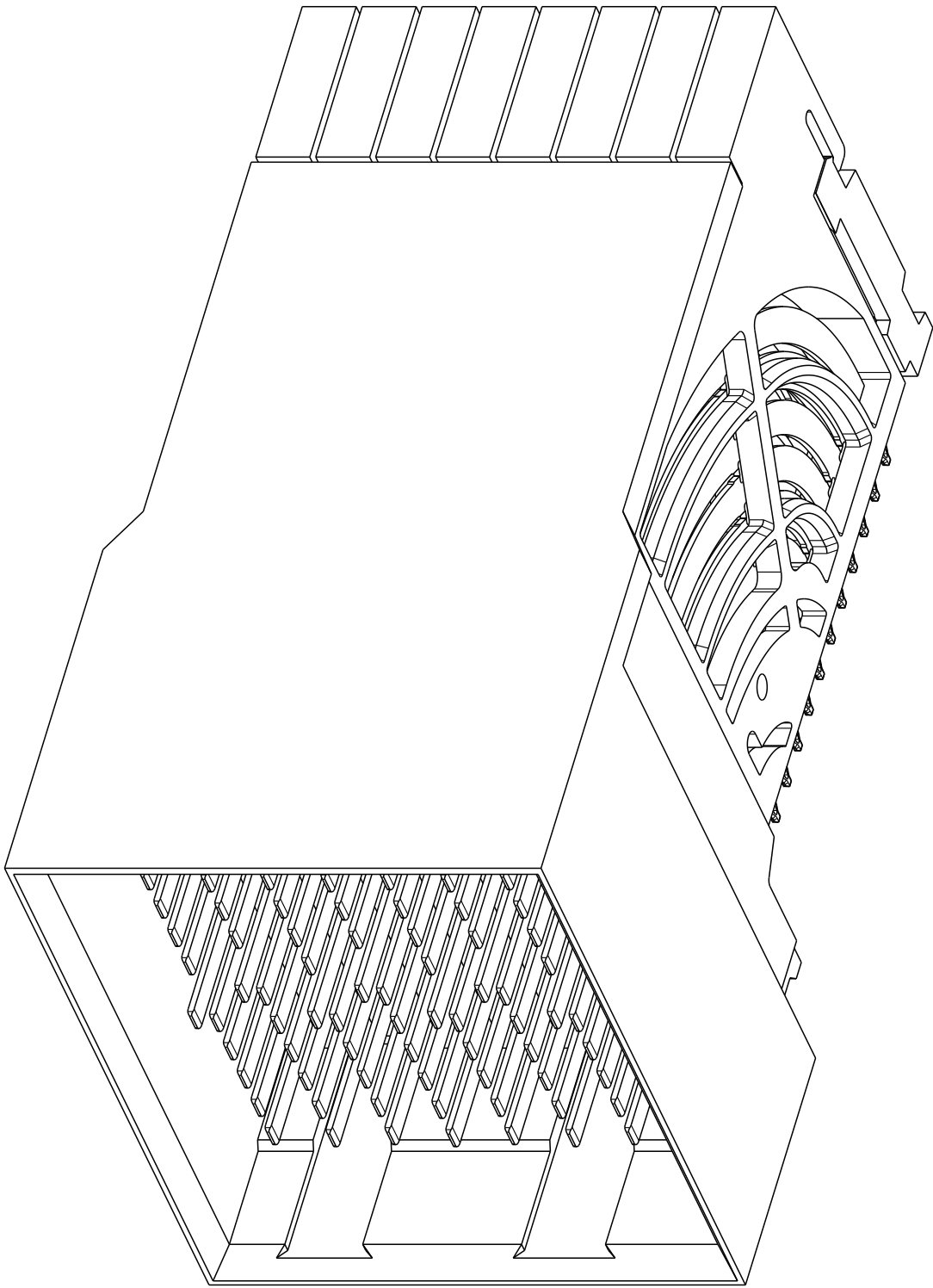
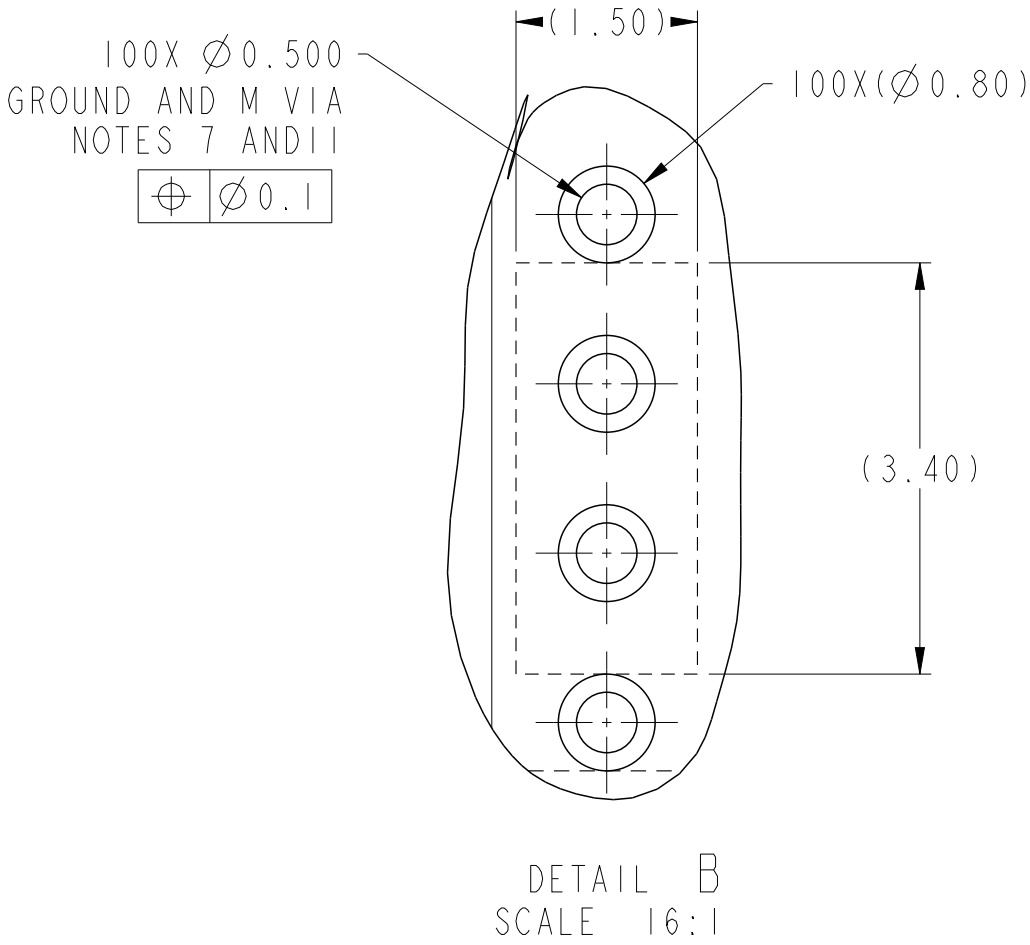
SECTION AA-AA

spec ref	---	dr	Kou Xu	2013/06/05	projection	MM	size	A2	scale	10:1
tolerance std	ASME Y14.5M	eng	Art Lin	2016/11/01	chr	Heaven Cen	ecn no	ELX-DG-25253-1		
		appr	Pei-Ming Zheng	2016/11/08	product family	-	rel level	Released		
surface	✓	linear	0.X	±.3	Amphenol FCI	title	AirMax VS2 RA HEADER	dwg no	10125530	rev
			0.XX	±.15	www.fci.com	4 Pair, 96 pos, 2 mm, 8 COL				B
			0.XXX	±.050						
		angular	0°	±2°						



PRODUCT NUMBER	PRESS-FIT TAIL PLATING TYPE	REMARKS
10125530-101	TIN/LEAD ALLOY OVER NICKEL	1-SIDE PLATING CUSTOMER SPECIAL
10125530-101LF	TIN OVER NICKEL (LEAD FREE)	
10125530-102	TIN/LEAD ALLOY OVER NICKEL	2-SIDES PLATING
10125530-102LF	TIN OVER NICKEL (LEAD FREE)	

- 1 - CONNECTOR MATERIALS:
HOUSING: HIGH TEMP THERMOPLASTIC, NATURAL, UL94-V0
IMLA PLASTIC: HIGH TEMP THERMOPLASTIC, BLACK, UL94-V0
CONTACT: COPPER ALLOY
ORGANIZER: HIGH TEMP THERMOPLASTIC, NATURAL, UL94-V0
- 2 - CONTACT PLATING:
SEPARABLE INTERFACE:
PERFORMANCE-BASED PLATING, QUALIFIED TO MEET THE REQUIREMENTS OF FCI PRODUCT SPECIFICATION GS-12-0956 INCLUDING TELCORDIA GR-1217-CORE (NOVEMBER 1995) CENTRAL OFFICE TEST SEQUENCE
- PRESS-FIT TAILS: SEE TABLE
- 3 - PRODUCT SPECIFICATION: GS-12-0956
- 4 - APPLICATION SPECIFICATION: GS-20-0305
- 5 - PRODUCT MARKING, (PROTOTYPE, PART NUMBER & LOT CODE), ON THIS SURFACE.
- 6 - CONNECTOR OUTLINE MAY BE SCREEN PRINTED ONTO CUSTOMER PCB TO BE USED AS A GUIDE FOR CONNECTOR PLACEMENT.
- 7 - REFER TO CUSTOMER DRAWING 10104444 FOR INFORMATION ON PCB HOLE DIAMETERS AND PLATING OPTIONS
- 8 - LEAD FREE PRODUCT MEETS THE EUROPEAN UNION DIRECTIVES & OTHER COUNTRY REGULATIONS AS DESCRIBED IN GS-22-008
- 9 - THESE OUTER VIAS (M) ARE OPTIONAL. WHILE NO CONNECTOR EONS ARE PRESSED INTO THESE HOLES WE RECCOMEND (Ø0.500) FINISHED HOLES AT THESE LOCATIONS TO PROVIDE GROUND SYMMETRY THROUGH THE PCB.
- 10 - PACKAGING MEETS GS-14-920 LEAD FREE LABELING SPECIFICATION.
- 11 - GROUND CONTACTS (C, F, I & L IN ODD COLUMNS AND A, D, G & J IN EVEN COLUMNS) REQUIRE (Ø0.50) FINISHED HOLES. SIGNAL LOCATIONS REQUIRE (Ø0.50) FINISHED HOLES



10125530-101 OR -101LF

spec ref	---	dr	Kou Xu	2013/06/05	projection	MM	size	A2	scale	10:1
tolerance std	ASME Y14.5M	eng	Art Lin	2016/11/01	chr	Heaven Cen	ecn no	ELX-DG-25253-1		
		appr	Pei-Ming Zheng	2016/11/08	product family		-	rel level	Released	
surface	✓	linear	0.X	±.3	Amphenol FCi AirMax VS2 RA HEADER 4 Pair, 96 pos, 2 mm, 8 COL www.fci.com			dwg no 10125530		rev B
			0.XX	±.15						
			0.XXX	±.050						
		angular	0°	±2°	cat. no.			Product - Customer Drw		sheet 3 of 3