

# KGS-MSTB 2,5/10 - Cable housing



1783740

<https://www.phoenixcontact.com/us/products/1783740>

Please be informed that the data shown in this PDF document is generated from our online catalog. Please find the complete data in the user documentation. Our general terms of use for downloads are valid.



Cable housing, color: green, product range: KGS-MSTB 2,5

## Commercial data

Item number	1783740
Packing unit	10 pc
Minimum order quantity	10 pc
Sales key	AA08
Product key	AAHZDD
Catalog page	Page 349 (C-1-2013)
GTIN	4017918041953
Weight per piece (including packing)	17.37 g
Weight per piece (excluding packing)	16.69 g
Customs tariff number	39269097
Country of origin	PL

# KGS-MSTB 2,5/10 - Cable housing

1783740

<https://www.phoenixcontact.com/us/products/1783740>



## Technical data

### Product properties

Product type	Cable housing
Product family	KGS-MSTB 2,5
Number of positions	10
Pitch	0 mm

### Mounting

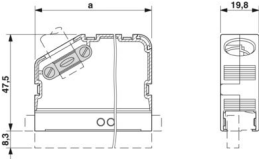
#### Cable clamp

Tightening torque	0.3 Nm
-------------------	--------

### Material specifications

Flammability rating according to UL 94	HB
--	----

### Dimensions

Dimensional drawing	
Pitch	0 mm

# KGS-MSTB 2,5/10 - Cable housing

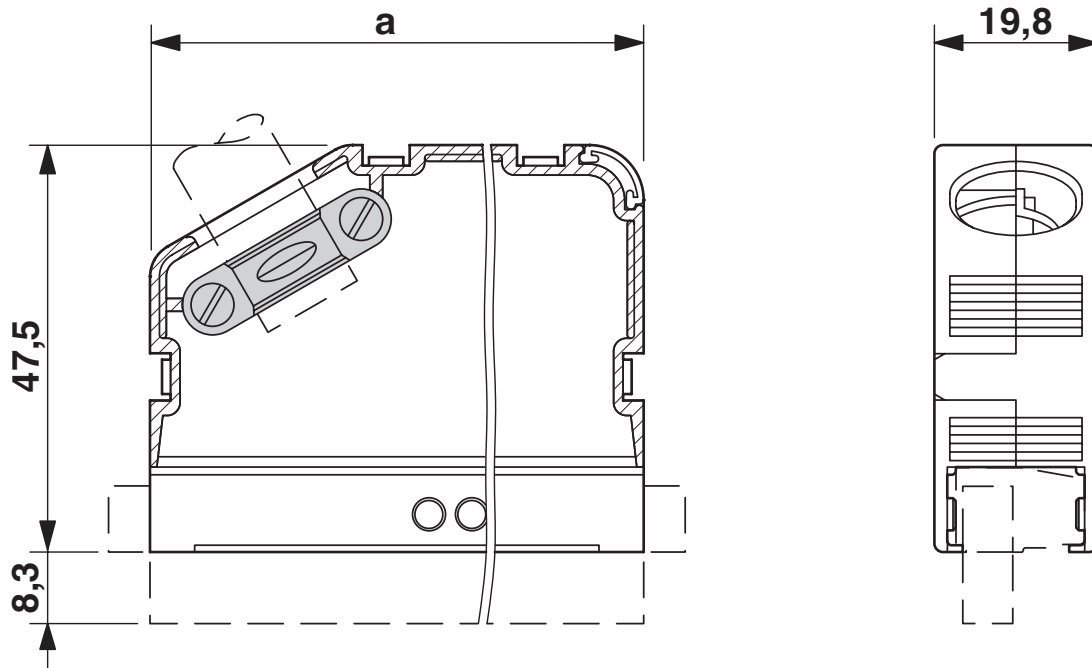
1783740

<https://www.phoenixcontact.com/us/products/1783740>



## Drawings

Dimensional drawing



# KGS-MSTB 2,5/10 - Cable housing



1783740

<https://www.phoenixcontact.com/us/products/1783740>

## Classifications

### ECLASS

ECLASS-11.0	27460402
ECLASS-13.0	27460402
ECLASS-12.0	27460402

### ETIM

ETIM 9.0	EC002943
----------	----------

### UNSPSC

UNSPSC 21.0	39121400
-------------	----------

# KGS-MSTB 2,5/10 - Cable housing



1783740

<https://www.phoenixcontact.com/us/products/1783740>

## Environmental product compliance

EU RoHS	
Fulfills EU RoHS substance requirements	Yes, No exemptions
China RoHS	
Environment friendly use period (EFUP)	EFUP-E
	No hazardous substances above the limits
EU REACH SVHC	
REACH candidate substance (CAS No.)	No substance above 0.1 wt%

# KGS-MSTB 2,5/10 - Cable housing

1783740

<https://www.phoenixcontact.com/us/products/1783740>

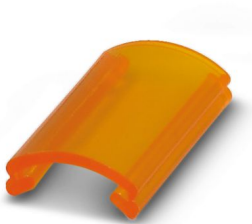


## Accessories

### KGS-MSTB 2,5/ DST - Cable housing

1784914

<https://www.phoenixcontact.com/us/products/1784914>



Transparent label carrier, can be marked with marker strips SBS 2.5/7.5

---

### KD-KGS-MSTB - Accessories

1804658

<https://www.phoenixcontact.com/us/products/1804658>



Molded cable strain relief, suitable for KGS-... cable housings, prevents the cable from being bent

# KGS-MSTB 2,5/10 - Cable housing



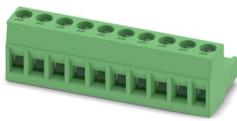
1783740

<https://www.phoenixcontact.com/us/products/1783740>

## MSTB 2,5/10-ST - PCB connector

1754601

<https://www.phoenixcontact.com/us/products/1754601>



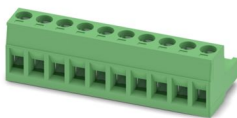
PCB connector, nominal cross section: 2.5 mm<sup>2</sup>, color: green, nominal current: 12 A, rated voltage (III/2): 320 V, contact surface: Tin, contact connection type: Socket, number of potentials: 10, number of rows: 1, number of positions: 10, number of connections: 10, product range: MSTB 2,5/..-ST, pitch: 5 mm, connection method: Screw connection with tension sleeve, screw head form: L Slotted, conductor/PCB connection direction: 0 °, locking clip: - Locking clip, plug-in system: COMBICON MSTB 2,5, locking: without, mounting: without, type of packaging: packed in cardboard

---

## MSTB 2,5/10-ST-5,08 - PCB connector

1757093

<https://www.phoenixcontact.com/us/products/1757093>



PCB connector, nominal cross section: 2.5 mm<sup>2</sup>, color: green, nominal current: 12 A, rated voltage (III/2): 320 V, contact surface: Tin, contact connection type: Socket, number of potentials: 10, number of rows: 1, number of positions: 10, number of connections: 10, product range: MSTB 2,5/..-ST, pitch: 5.08 mm, connection method: Screw connection with tension sleeve, screw head form: L Slotted, conductor/PCB connection direction: 0 °, locking clip: - Locking clip, plug-in system: COMBICON MSTB 2,5, locking: without, mounting: without, type of packaging: packed in cardboard

# KGS-MSTB 2,5/10 - Cable housing



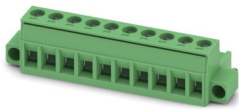
1783740

<https://www.phoenixcontact.com/us/products/1783740>

## MSTB 2,5/10-STF - PCB connector

1786912

<https://www.phoenixcontact.com/us/products/1786912>



PCB connector, nominal cross section: 2.5 mm<sup>2</sup>, color: green, nominal current: 12 A, rated voltage (III/2): 320 V, contact surface: Tin, contact connection type: Socket, number of potentials: 10, number of rows: 1, number of positions: 10, number of connections: 10, product range: MSTB 2,5/...-STF, pitch: 5 mm, connection method: Screw connection with tension sleeve, screw head form: L Slotted, conductor/PCB connection direction: 0 °, locking clip: - without locking clip, plug-in system: COMBICON MSTB 2,5, locking: Screw locking mechanism, mounting: Screw flange, type of packaging: packed in cardboard

---

## MSTB 2,5/10-STF-5,08 - PCB connector

1778069

<https://www.phoenixcontact.com/us/products/1778069>



PCB connector, nominal cross section: 2.5 mm<sup>2</sup>, color: green, nominal current: 12 A, rated voltage (III/2): 320 V, contact surface: Tin, contact connection type: Socket, number of potentials: 10, number of rows: 1, number of positions: 10, number of connections: 10, product range: MSTB 2,5/...-STF, pitch: 5.08 mm, connection method: Screw connection with tension sleeve, screw head form: L Slotted, conductor/PCB connection direction: 0 °, locking clip: - without locking clip, plug-in system: COMBICON MSTB 2,5, locking: Screw locking mechanism, mounting: Screw flange, type of packaging: packed in cardboard



# KGS-MSTB 2,5/10 - Cable housing



1783740

<https://www.phoenixcontact.com/us/products/1783740>

## IC 2,5/10-ST-5,08 - PCB connector

1786255

<https://www.phoenixcontact.com/us/products/1786255>



PCB connector, nominal cross section: 2.5 mm<sup>2</sup>, color: green, nominal current: 12 A, rated voltage (III/2): 320 V, contact surface: Tin, contact connection type: Pin, number of potentials: 10, number of rows: 1, number of positions: 10, number of connections: 10, product range: IC 2,5/...-ST, pitch: 5.08 mm, connection method: Screw connection with tension sleeve, screw head form: L Slotted, conductor/PCB connection direction: 0 °, locking clip: - without locking clip, plug-in system: COMBICON MSTB 2,5, locking: without, mounting: without, type of packaging: packed in cardboard

## IC 2,5/10-STF-5,08 - PCB connector

1825394

<https://www.phoenixcontact.com/us/products/1825394>



PCB connector, nominal cross section: 2.5 mm<sup>2</sup>, color: green, nominal current: 12 A, rated voltage (III/2): 320 V, contact surface: Tin, contact connection type: Pin, number of potentials: 10, number of rows: 1, number of positions: 10, number of connections: 10, product range: IC 2,5/...-STF, pitch: 5.08 mm, connection method: Screw connection with tension sleeve, screw head form: L Slotted, conductor/PCB connection direction: 0 °, locking clip: - without locking clip, plug-in system: COMBICON MSTB 2,5, locking: Screw locking mechanism, mounting: Screw flange, type of packaging: packed in cardboard

# KGS-MSTB 2,5/10 - Cable housing



1783740

<https://www.phoenixcontact.com/us/products/1783740>

## GMSTB 2,5/ 7-ST - PCB connector

1766932

<https://www.phoenixcontact.com/us/products/1766932>



PCB connector, nominal cross section: 2.5 mm<sup>2</sup>, color: green, nominal current: 12 A, rated voltage (III/2): 630 V, contact surface: Tin, contact connection type: Socket, number of potentials: 7, number of rows: 1, number of positions: 7, number of connections: 7, product range: GMSTB 2,5/...-ST, pitch: 7.5 mm, connection method: Screw connection with tension sleeve, screw head form: L Slotted, conductor/PCB connection direction: 0 °, locking clip: - Locking clip, plug-in system: COMBICON MSTB 2,5, locking: without, mounting: without, type of packaging: packed in cardboard

## GMSTB 2,5/ 7-ST-7,62 - PCB connector

1767054

<https://www.phoenixcontact.com/us/products/1767054>



PCB connector, nominal cross section: 2.5 mm<sup>2</sup>, color: green, nominal current: 12 A, rated voltage (III/2): 630 V, contact surface: Tin, contact connection type: Socket, number of potentials: 7, number of rows: 1, number of positions: 7, number of connections: 7, product range: GMSTB 2,5/...-ST, pitch: 7.62 mm, connection method: Screw connection with tension sleeve, screw head form: L Slotted, conductor/PCB connection direction: 0 °, locking clip: - Locking clip, plug-in system: COMBICON MSTB 2,5, locking: without, mounting: without, type of packaging: packed in cardboard

Phoenix Contact 2024 © - all rights reserved  
<https://www.phoenixcontact.com>

Phoenix Contact USA  
586 Fulling Mill Road  
Middletown, PA 17057, United States  
(+717) 944-1300  
[info@phoenixcon.com](mailto:info@phoenixcon.com)