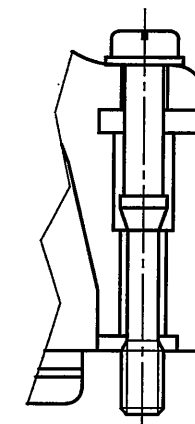
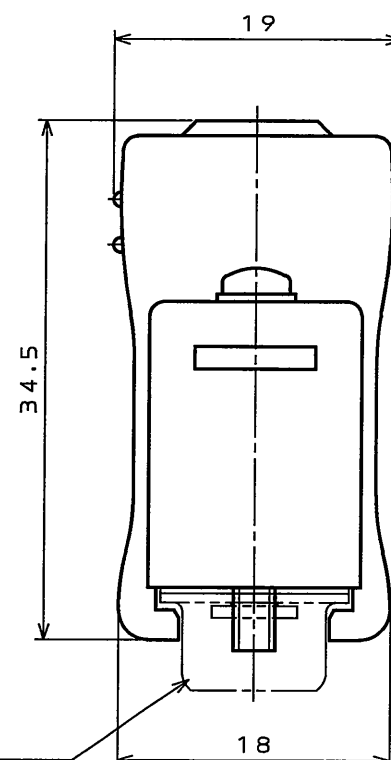
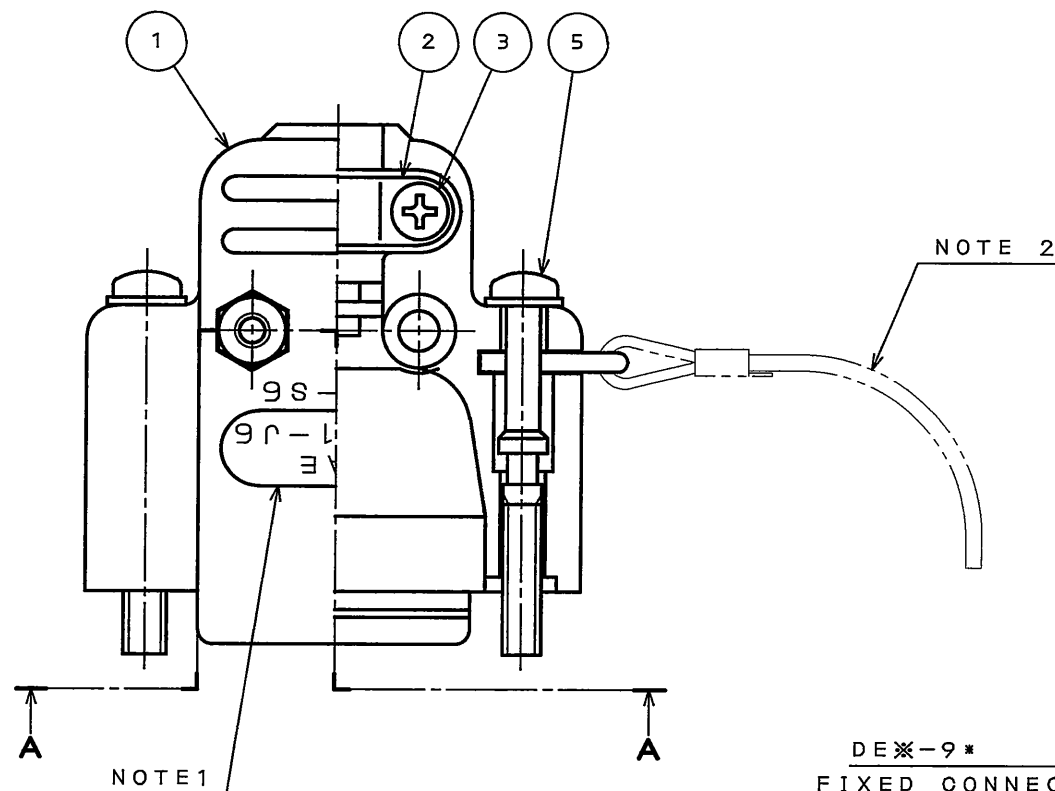


SJ102015  
(ON DRAWING) 台架図

版数 REV.	年月日 DATE	CON NO.	変更内容 DESCRIPTION	製図 DR.	担当 CHK.	査閲 APPD.	承認 APPD.
2	10.Nov.2005	058570	CHANGE TO BILINGUAL		Y.TAKA01	<i>A. Tago</i>	<i>Y. Kubota</i>

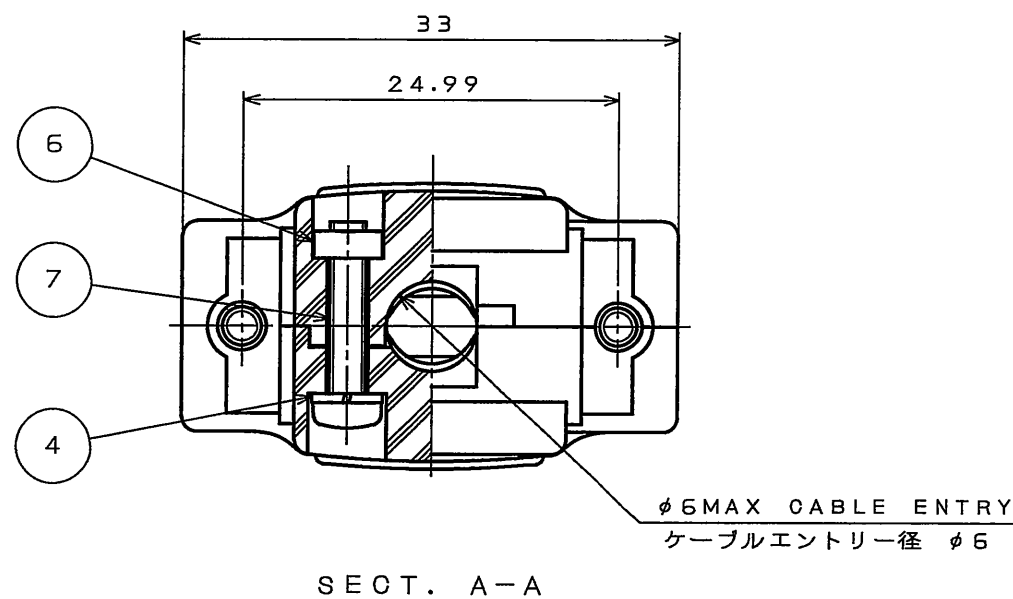
注1. 図示の位置に社名及び品名略称を表示する。  
2. ダストキャップ取付ヒモ取付例。

NOTE1. MARK THE COMPANY NAME AND ABBREVIATED PART NUMBER AT THE LOCATION SHOWN IN THE DRAWING.  
2. EXAMPLE OF DUST CAP MOUNTING CORD.



ANOTHER FORM OF SCREW LOCK  
嵌合固定ねじ別途形状

DE※-9\*  
FIXED CONNECTOR(REF.)  
コネクタ適用例(参考)



符号 NO.	名称 DESCRIPTION	個数 QTY.	材料 MATERIAL	仕上 FINISH	備考 REMARKS
7	CROSS PAN HEAD SCREW	2	STEEL	HEXAVALENT CHROMIUM FREE CHROMATE (TRIVALENT CHROMATE TREATMENT) ON ELECTROPLATED ZINC	M2.3×12
6	HEXAGON NUT	2	STEEL	HEXAVALENT CHROMIUM FREE CHROMATE (TRIVALENT CHROMATE TREATMENT) ON ELECTROPLATED ZINC	M2.3
5	SCREW LOCK MAIN SCREW	2	STEEL	HEXAVALENT CHROMIUM FREE CHROMATE (TRIVALENT CHROMATE TREATMENT) ON ELECTROPLATED ZINC	#4-40
	SPRING ASSY	2	STEEL	HEXAVALENT CHROMIUM FREE CHROMATE (TRIVALENT CHROMATE TREATMENT) ON ELECTROPLATED ZINC	
4	SPRING WASHER	2	STEEL	HEXAVALENT CHROMIUM FREE CHROMATE (TRIVALENT CHROMATE TREATMENT) ON ELECTROPLATED ZINC	FOR M2.3
3	CROSS PAN HEAD SCREW	2	STEEL	HEXAVALENT CHROMIUM FREE CHROMATE (TRIVALENT CHROMATE TREATMENT) ON ELECTROPLATED ZINC	M2×7
2	CLAMP SADDLE	2	STEEL	HEXAVALENT CHROMIUM FREE CHROMATE (TRIVALENT CHROMATE TREATMENT) ON ELECTROPLATED ZINC	
1	MAIN HOOD	2	ABS RESIN		

仕様書 (SPECIFICATION)	第1版 (ORIGINAL DATE) 15.Sep.2005	尺度 (SCALE) 2:1	シリーズ (SERIES) D-sub	日本航空電子工業株式会社 JAPAN AVIATION ELECTRONICS INDUSTRY, LTD.
公差 (GENERAL TOLERANCE)	製図 (DRAWING) Y.TAKA01	名称 (TITLE) DE-C1-J6-S6R		
寸法 (DIMENSION)	担当 (CHECKER) Y.TAKA01	査閲 (APPD.)		図面番号 (DRAWING NO.) SJ102015
角度 (ANGLES)	承認 (APPD.) Y.KUBOTA	質量 (MASS)		

DOF-0-212F(05.08)

