

# PLC-RPT- 24DC/21-21/EX - Relay Module



2909514

<https://www.phoenixcontact.com/us/products/2909514>

Please be informed that the data shown in this PDF document is generated from our online catalog. Please find the complete data in the user documentation. Our general terms of use for downloads are valid.



PLC-INTERFACE, consisting of DIN-rail-mountable basic terminal block in 14 mm with Push-in connection and plug-in relay with power contact, 2 changeover contacts, 24 V DC input voltage. Approved according to ATEX/IECEX (Zone 2) and Ex Zone Class I, Div. 2.

## Commercial data

|                                      |                     |
|--------------------------------------|---------------------|
| Item number                          | 2909514             |
| Packing unit                         | 10 pc               |
| Minimum order quantity               | 10 pc               |
| Sales key                            | C462                |
| Product key                          | CK62BK              |
| Catalog page                         | Page 386 (C-5-2019) |
| GTIN                                 | 4055626363172       |
| Weight per piece (including packing) | 73.31 g             |
| Weight per piece (excluding packing) | 64.13 g             |
| Customs tariff number                | 85364190            |
| Country of origin                    | DE                  |

# PLC-RPT- 24DC/21-21/EX - Relay Module



2909514

<https://www.phoenixcontact.com/us/products/2909514>

## Technical data

### Notes

#### Utilization restriction

|          |   |
|----------|---|
| EMC note | EMC: class A product, see manufacturer's declaration in the download area |
|----------|---|

### Product properties

|                         |  |
|-------------------------|--|
| Product type            | Relay Module                                       |
| Product family          | PLC-INTERFACE                                      |
| Application             | Class I, Division 2<br>potentially explosive areas |
| Operating mode          | 100% operating factor                              |
| Mechanical service life | $3 \times 10^7$ cycles                             |

#### Insulation characteristics

|            |                                       |
|------------|---------------------------------------|
| Insulation | Safe isolation, reinforced insulation |
|------------|---------------------------------------|

#### Insulation characteristics: Standards/regulations

|                      |                                       |
|----------------------|---------------------------------------|
| Insulation           | Safe isolation, reinforced insulation |
| Overvoltage category | III                                   |
| Pollution degree     | 3                                     |

### Electrical properties

|  |  |
|--|--|
| Maximum power dissipation for nominal condition      | 0.43 W   |
| Test voltage (Winding/contact)                       | 4 kV AC (50 Hz, 1 min., winding/contact)                         |
| Test voltage (Changeover contact/changeover contact) | 2.5 kV AC (50 Hz, 1 min., changeover contact/changeover contact) |

#### Standards/regulations

|                          |          |
|--------------------------|----------|
| Rated insulation voltage | 250 V AC |
| Rated surge voltage      | 6 kV     |

### Input data

#### Coil side

|  |  |
|--|--|
| Nominal input voltage $U_N$                              | 24 V DC  |
| Input voltage range                                      | 20.2 V DC ... 33.6 V DC (20 °C)                        |
| Nominal voltage_GRP (plugged-in electromechanical relay) | 24 V DC  |
| Drive and function                                       | monostable   |
| Drive (polarity)   | polarized  |
| Typical input current at $U_N$                           | 18 mA  |
| Typical response time                                    | 8 ms   |
| Typical release time                                     | 10 ms  |
| Protective circuit                                       | Reverse polarity protection; Polarity protection diode |

# PLC-RPT- 24DC/21-21/EX - Relay Module



2909514

<https://www.phoenixcontact.com/us/products/2909514>

|                           |                                      |
|---------------------------|--------------------------------------|
|                           | Surge protection; Freewheeling diode |
| Operating voltage display | Yellow LED                           |

## Output data

### Switching

|                                       |   |
|---------------------------------------|---|
| Contact switching type                | 2 changeover contacts   |
| Type of switch contact                | Single contact  |
| Contact material                      | AgNi  |
| Maximum switching voltage             | 250 V AC/DC (The separating plate PLC-ATP should be installed for voltages larger than 250 V (L1, L2, L3) between identical terminal blocks in adjacent modules. Potential bridging is then carried out with FBST 8-PLC... or ...FBST 500...) |
| Minimum switching voltage             | 5 V AC/DC (10 mA)   |
| Limiting continuous current           | 6 A   |
| Maximum inrush current                | 15 A (300 ms)   |
| Min. switching current                | 10 mA (5 V)   |
| Interrupting rating (ohmic load) max. | 140 W (at 24 V DC)<br>85 W (at 48 V DC)<br>60 W (at 60 V DC)<br>44 W (at 110 V DC)<br>60 W (at 220 V DC)<br>1500 VA (for 250 V AC)  |
| Switching capacity                    | 2 A (at 24 V, DC13)<br>0.2 A (at 250 V, DC13)<br>3 A (at 24 V, AC15)<br>3 A (at 120 V, AC15)<br>3 A (at 250 V, AC15)  |

## Connection data

|                                  |   |
|----------------------------------|---|
| Connection method                | Push-in connection  |
| Stripping length                 | 10 mm   |
| Conductor cross section rigid    | 0.14 mm <sup>2</sup> ... 2.5 mm <sup>2</sup>  |
| Conductor cross section flexible | 0.14 mm <sup>2</sup> ... 2.5 mm <sup>2</sup><br>0.2 mm <sup>2</sup> ... 2.5 mm <sup>2</sup> (Single ferrule)<br>2x 0.5 mm <sup>2</sup> ... 1 mm <sup>2</sup> (TWIN ferrule) |
| Conductor cross section AWG      | 26 ... 14   |

## Dimensions

|        |       |
|--------|-------|
| Width  | 14 mm |
| Height | 80 mm |
| Depth  | 94 mm |

## Material specifications

|  |                 |
|--|-----------------|
| Color                                  | gray (RAL 7042) |
| Flammability rating according to UL 94 | V0 (Housing)    |

# PLC-RPT- 24DC/21-21/EX - Relay Module



2909514

<https://www.phoenixcontact.com/us/products/2909514>

## Environmental and real-life conditions

### Ambient conditions

|   |  |
|---|--|
| Degree of protection (Relay)            | RT III (Relay)   |
| Degree of protection (Relay base)       | IP20 (Relay base)  |
| Ambient temperature (operation)         | -40 °C ... 70 °C (UL)<br>-40 °C ... 70 °C (ATEX / IECEx) |
| Ambient temperature (storage/transport) | -40 °C ... 85 °C   |

## Approvals

### CE

|             |              |
|-------------|--------------|
| Certificate | CE-compliant |
|-------------|--------------|

### ATEX

|                |                            |
|----------------|----------------------------|
| Identification | Ⓔ II 3G Ex ec nC IIC T4 Gc |
| Certificate    | IBExU16ATEXB015 X          |

### IECEx

|                |                    |
|----------------|--------------------|
| Identification | Ex ec nC IIC T4 Gc |
| Certificate    | IECEx IBE 16.0029X |

### UKCA Ex (UKEX)

|                |                             |
|----------------|-----------------------------|
| Identification | Ⓔ II 3 G Ex ec nC IIC T4 Gc |
| Certificate    | PxCIF21UKEX2909514X         |

### UL, USA

|                |                                   |
|----------------|-----------------------------------|
| Identification | Class I, Zone 2, AEx nA nC IIC T6 |
|----------------|-----------------------------------|

### UL, USA/Canada

|                |                                    |
|----------------|------------------------------------|
| Identification | Class I, Div. 2, Groups A, B, C, D |
|----------------|------------------------------------|

### UL, Canada

|                |                                       |
|----------------|---------------------------------------|
| Identification | Class I, Zone 2, Ex nA nC IIC Gc T6 X |
|----------------|---------------------------------------|

### Shipbuilding approval

|             |            |
|-------------|------------|
| Certificate | TAE0000196 |
|-------------|------------|

### Corrosive gas test

|                |   |
|----------------|---|
| Identification | ISA-S71.04. G3 Harsh Group<br>EN 60068-2-60 |
|----------------|---|

### DNV GL data

|             |   |
|-------------|---|
| Temperature | D   |
| Humidity    | A   |
| Vibration   | B/C   |
| EMC         | B   |
| Enclosure   | Required protection according to the Rules shall be provided upon installation on board |

# PLC-RPT- 24DC/21-21/EX - Relay Module



2909514

<https://www.phoenixcontact.com/us/products/2909514>

## EMC data

|                               |  |
|-------------------------------|--|
| Low Voltage Directive         | Conformance with Low Voltage Directive |
| Electromagnetic compatibility | Conformance with EMC directive         |

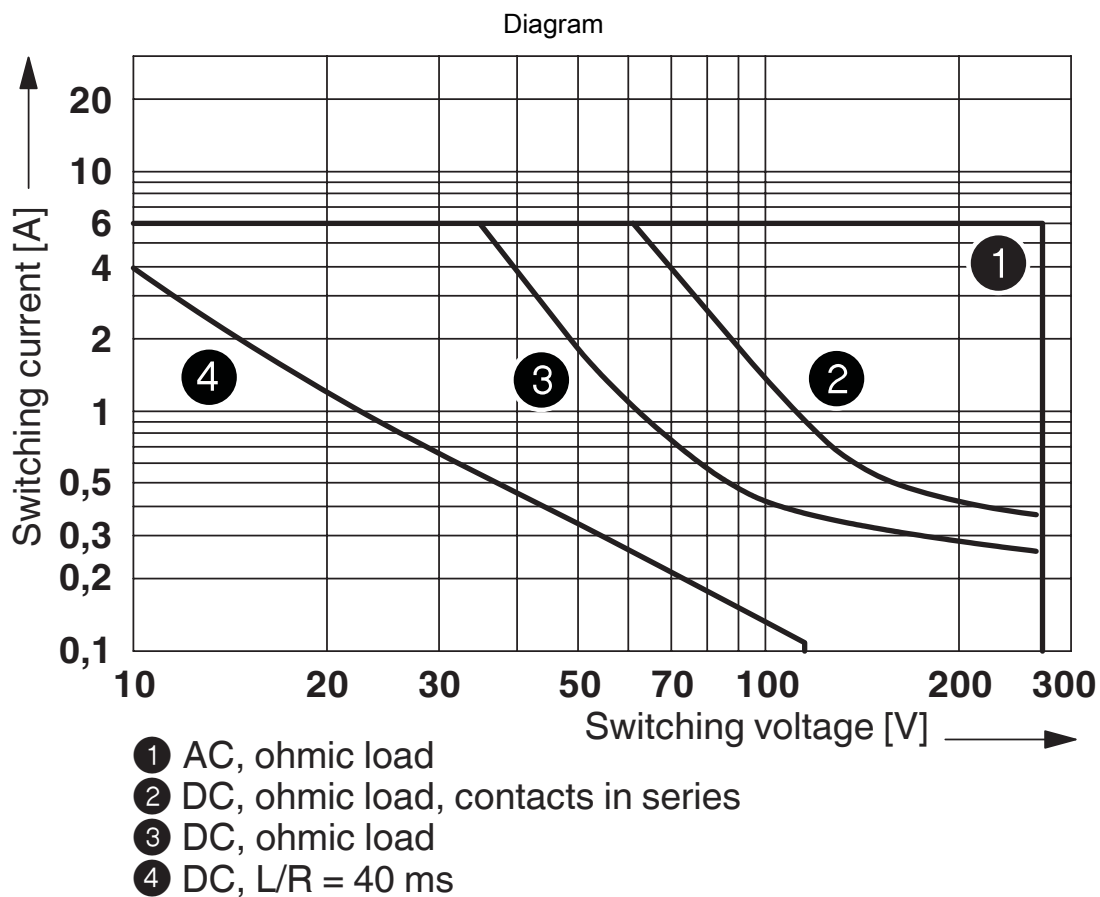
## Standards and regulations

|                       |               |
|-----------------------|---------------|
| Standards/regulations |               |
| Standards/regulations | IEC 60947-5-1 |
|                       | EN 60079-0    |
|                       | EN 60079-7    |
|                       | EN 60079-15   |

## Mounting

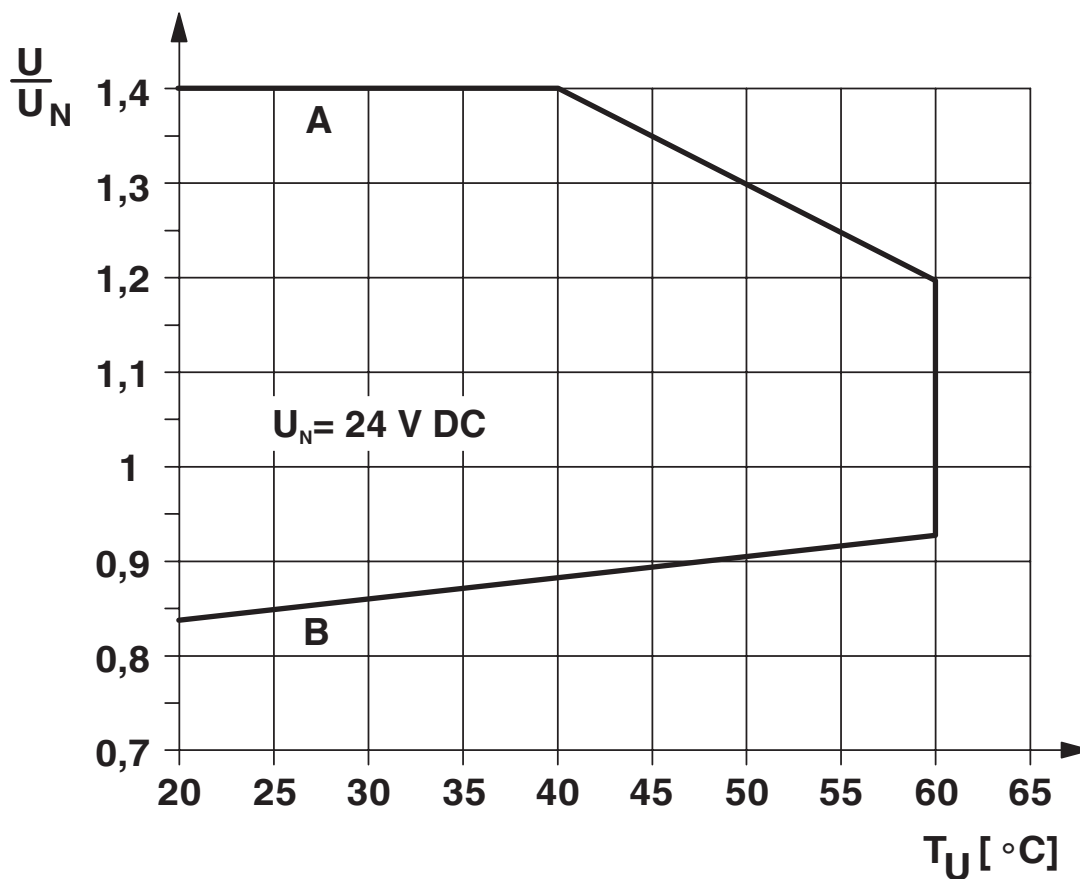
|                   |                           |
|-------------------|---------------------------|
| Mounting type     | DIN rail mounting         |
| Assembly note     | in rows with zero spacing |
| Mounting position | any                       |

## Drawings



Interrupting rating

Diagram



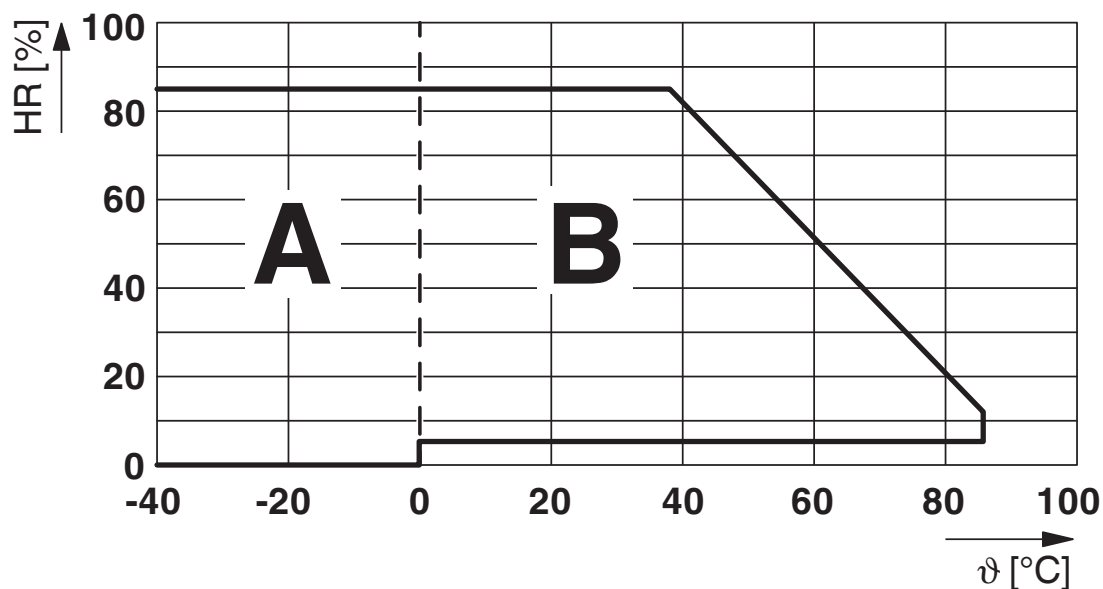
## Curve A

Maximum permissible continuous voltage  $U_{\max}$  with limiting continuous current on the contact side (see relevant technical data)

## Curve B

Minimum permissible operate voltage  $U_{\text{op}}$  after pre-excitation (see relevant technical data)

Diagram



Permissible humidity for operation and storage.

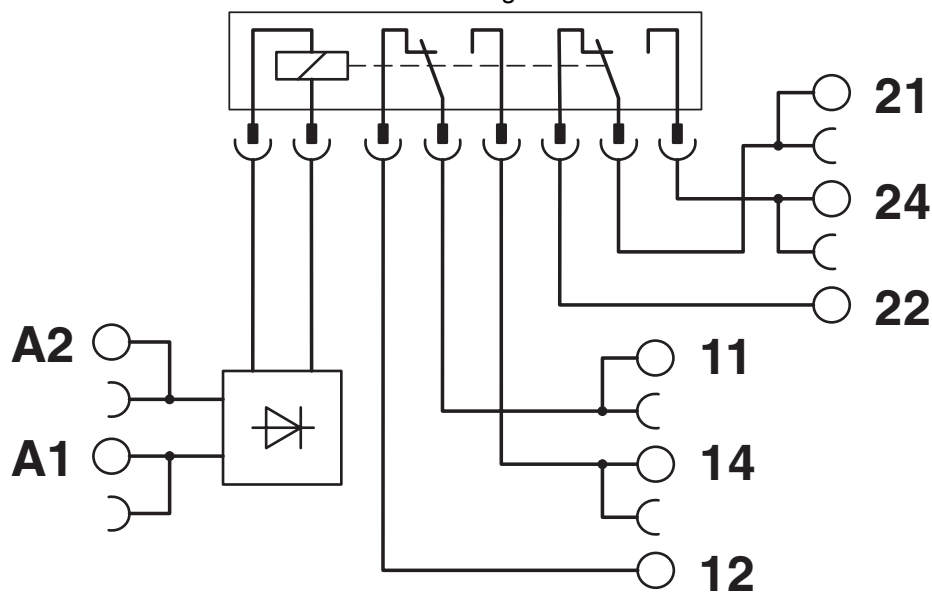
The maximum permissible ambient temperature as specified in the data sheet must be observed.

Area A: Ice buildup at ambient temperatures  $\leq 0^{\circ}\text{C}$  must be prevented

Area B: Condensation at ambient temperatures  $> 0^{\circ}\text{C}$  must be prevented

On 30 full days that are naturally distributed across an entire year, a humidity level of 95% is permissible at an ambient temperature  $\leq 25^{\circ}\text{C}$ .

Circuit diagram



# PLC-RPT- 24DC/21-21/EX - Relay Module



2909514

<https://www.phoenixcontact.com/us/products/2909514>

## Approvals

To download certificates, visit the product detail page: <https://www.phoenixcontact.com/us/products/2909514>



**DNV GL**

Approval ID: TAE0000196



**CCC**

Approval ID: 2021122304114118



**cULus Listed**

Approval ID: E140324



**IECEx**

Approval ID: IECEx IBE 16.0029X



**ATEX**

Approval ID: IBExU 16 ATEX B015 X



**EAC Ex**

Approval ID: RU C-DE.AB72.B.02328



**IECEx**

Approval ID: IECEx IBE 16.0029X



**cUL Listed**

Approval ID: FILE E 199827



**UL Listed**

Approval ID: FILE E 199827



**ATEX**

Approval ID: 16ATEXB015X



**cULus Listed**

Approval ID: E199827

# PLC-RPT- 24DC/21-21/EX - Relay Module



2909514

<https://www.phoenixcontact.com/us/products/2909514>



**KC-s**

Approval ID: 18-KA4BO-0620X

**cULus Listed**

# PLC-RPT- 24DC/21-21/EX - Relay Module



2909514

<https://www.phoenixcontact.com/us/products/2909514>

## Classifications

### ECLASS

|             |          |
|-------------|----------|
| ECLASS-11.0 | 27371601 |
| ECLASS-12.0 | 27371601 |
| ECLASS-13.0 | 27371601 |

### ETIM

|          |          |
|----------|----------|
| ETIM 9.0 | EC001437 |
|----------|----------|

### UNSPSC

|             |          |
|-------------|----------|
| UNSPSC 21.0 | 39122300 |
|-------------|----------|

Environmental product compliance

|   |   |
|---|---|
| EU RoHS                                 |   |
| Fulfills EU RoHS substance requirements | Yes   |
| Exemption                               | 7(a), 7(c)-I  |
| China RoHS                              |   |
| Environment friendly use period (EFUP)  | EFUP-50   |
|   | An article-related China RoHS declaration table can be found in the download area for the respective article under "Manufacturer declaration". For all articles with EFUP-E, no China RoHS declaration table issued and required. |
| EU REACH SVHC                           |   |
| REACH candidate substance (CAS No.)     | Hexahydromethylphthalic anhydride(CAS: n/a)   |
|   | Lead(CAS: 7439-92-1)  |
| SCIP                                    | b0637d75-cd8f-4708-9869-4fc631b101fe  |

# PLC-RPT- 24DC/21-21/EX - Relay Module



2909514

<https://www.phoenixcontact.com/us/products/2909514>

## Accessories

**i** Note: Applying some accessories below might limit this product.

### FBST 500-PLC RD - Continuous plug-in bridge

2966786

<https://www.phoenixcontact.com/us/products/2966786>



Continuous plug-in bridge, length: 500 mm, color: red

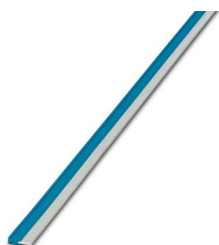
**i** Max. current carrying capacity: 32 A

---

### FBST 500-PLC BU - Continuous plug-in bridge

2966692

<https://www.phoenixcontact.com/us/products/2966692>



Continuous plug-in bridge, length: 500 mm, color: blue

**i** Max. current carrying capacity: 32 A

# PLC-RPT- 24DC/21-21/EX - Relay Module



2909514

<https://www.phoenixcontact.com/us/products/2909514>


## FBST 500-PLC GY - Continuous plug-in bridge

2966838

<https://www.phoenixcontact.com/us/products/2966838>



Continuous plug-in bridge, length: 500 mm, color: gray

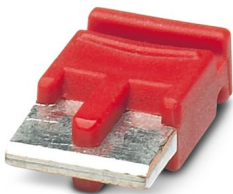
 Max. current carrying capacity: 32 A

---

## FBST 6-PLC RD - Single plug-in bridge

2966236

<https://www.phoenixcontact.com/us/products/2966236>



Single plug-in bridge, number of positions: 2, length: 6 mm, color: red

 Max. current carrying capacity: 6 A

# PLC-RPT- 24DC/21-21/EX - Relay Module



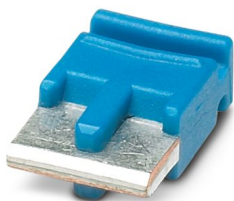
2909514

<https://www.phoenixcontact.com/us/products/2909514>

## FBST 6-PLC BU - Single plug-in bridge

2966812

<https://www.phoenixcontact.com/us/products/2966812>



Single plug-in bridge, number of positions: 2, length: 6 mm, color: blue

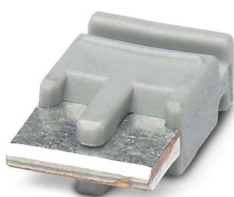
 Max. current carrying capacity: 6 A

---

## FBST 6-PLC GY - Single plug-in bridge

2966825

<https://www.phoenixcontact.com/us/products/2966825>



Single plug-in bridge, number of positions: 2, length: 6 mm, color: gray

 Max. current carrying capacity: 6 A

# PLC-RPT- 24DC/21-21/EX - Relay Module



2909514

<https://www.phoenixcontact.com/us/products/2909514>

## PLC-V8L/FLK14/OUT - System connection

2299660

<https://www.phoenixcontact.com/us/products/2299660>



V8 adapter for 8 x PLC-INTERFACE (14 mm), controller: PLC system cabling of output cards, connection 1: IDC/FLK pin strip 1x 14-position, connection 2: Plug-in connection (Can be snapped onto 8x PLC-INTERFACE terminals), connection 3: Screw connection 1x 2-position, number of channels: 8, control logic: positive switching

---

## PLC-V8L/FLK14/OUT/M - System connection

2304306

<https://www.phoenixcontact.com/us/products/2304306>



V8 adapter for 8 x PLC-INTERFACE (14 mm), controller: PLC system cabling of output cards, connection 1: IDC/FLK pin strip 1x 14-position, connection 2: Plug-in connection (Can be snapped onto 8x PLC-INTERFACE terminals), connection 3: Screw connection 1x 2-position, number of channels: 8, control logic: minusschaltend

# PLC-RPT- 24DC/21-21/EX - Relay Module



2909514

<https://www.phoenixcontact.com/us/products/2909514>

## ZB 10:UNBEDRUCKT - Zack marker strip

1053001

<https://www.phoenixcontact.com/us/products/1053001>



Zack marker strip, Strip, white, unlabeled, can be labeled with: PLOTMARK, CMS-P1-PLOTTER, mounting type: snapped, for terminal block width: 10.2 mm, lettering field size: 10.5 x 10.15 mm, Number of individual labels: 10

---

## ZB 10 CUS - Zack marker strip

0824941

<https://www.phoenixcontact.com/us/products/0824941>



Zack marker strip, can be ordered: Strip, white, labeled according to customer specifications, mounting type: snap into tall marker groove, for terminal block width: 10.2 mm, lettering field size: 10,15 x 10,5 mm, Number of individual labels: 10

# PLC-RPT- 24DC/21-21/EX - Relay Module



2909514

<https://www.phoenixcontact.com/us/products/2909514>

## ZB10,LGS:FORTL.ZAHLEN - Zack marker strip

1053014

<https://www.phoenixcontact.com/us/products/1053014>



Zack marker strip, Strip, white, labeled, can be labeled with: CMS-P1-PLOTTER, printed horizontally: consecutive numbers 1 ... 10, 11 ... 20, etc. up to 91 ... 100, mounting type: snapped, for terminal block width: 10.2 mm, lettering field size: 10,15 x 10,5 mm, Number of individual labels: 10

---

## ZB10,QR:FORTL.ZAHLEN - Zack marker strip

1053027

<https://www.phoenixcontact.com/us/products/1053027>



Zack marker strip, Strip, white, labeled, can be labeled with: CMS-P1-PLOTTER, Printed vertically: consecutive numbers 1 ... 10, 11 ... 20, etc. up to 91 ... 100, mounting type: snapped, for terminal block width: 10.2 mm, lettering field size: 10,15 x 10,5 mm, Number of individual labels: 10

# PLC-RPT- 24DC/21-21/EX - Relay Module



2909514

<https://www.phoenixcontact.com/us/products/2909514>

## ZB10,LGS:L1-N,PE - Marker for terminal blocks

1053412

<https://www.phoenixcontact.com/us/products/1053412>



Marker for terminal blocks, Strip, white, labeled, can be labeled with: CMS-P1-PLOTTER, horizontal: L1, L2, L3, N, PE, L1, L2, L3, N, PE, mounting type: snapped, for terminal block width: 10.2 mm, lettering field size: 10,15 x 10,5 mm, Number of individual labels: 10

---

## ZB10,LGS:U-N - Marker for terminal blocks

1053438

<https://www.phoenixcontact.com/us/products/1053438>



Marker for terminal blocks, Strip, white, labeled, can be labeled with: CMS-P1-PLOTTER, horizontal: U, V, W, N, GND, U, V, W, N, GND, mounting type: snapped, for terminal block width: 10.2 mm, lettering field size: 10,15 x 10,5 mm, Number of individual labels: 10

# PLC-RPT- 24DC/21-21/EX - Relay Module



2909514

<https://www.phoenixcontact.com/us/products/2909514>

## UC-TM 10 - Marker for terminal blocks

0818069

<https://www.phoenixcontact.com/us/products/0818069>



Marker for terminal blocks, Sheet, white, unlabeled, can be labeled with: BLUEMARK ID COLOR, BLUEMARK ID, BLUEMARK CLED, PLOTMARK, CMS-P1-PLOTTER, mounting type: snapped, for terminal block width: 10.2 mm, lettering field size: 9.6 x 10.5 mm, Number of individual labels: 48

---

## UC-TM 10 CUS - Marker for terminal blocks

0824605

<https://www.phoenixcontact.com/us/products/0824605>



Marker for terminal blocks, can be ordered: by sheet, white, labeled according to customer specifications, mounting type: snap into tall marker groove, for terminal block width: 10.2 mm, lettering field size: 9.6 x 10.5 mm, Number of individual labels: 48

# PLC-RPT- 24DC/21-21/EX - Relay Module



2909514

<https://www.phoenixcontact.com/us/products/2909514>

## UCT-TM 10 - Marker for terminal blocks

0829142

<https://www.phoenixcontact.com/us/products/0829142>



Marker for terminal blocks, Sheet, white, unlabeled, can be labeled with: TOPMARK NEO, TOPMARK LASER, BLUEMARK ID COLOR, BLUEMARK ID, BLUEMARK CLED, THERMOMARK PRIME, THERMOMARK CARD 2.0, THERMOMARK CARD, mounting type: snapped, for terminal block width: 10.2 mm, lettering field size: 8.9 x 9.6 mm, Number of individual labels: 36

---

## UCT-TM 10 CUS - Marker for terminal blocks

0829623

<https://www.phoenixcontact.com/us/products/0829623>



Marker for terminal blocks, can be ordered: by sheet, white, labeled according to customer specifications, mounting type: snap into tall marker groove, for terminal block width: 10.2 mm, lettering field size: 8.9 x 9.6 mm, Number of individual labels: 36

# PLC-RPT- 24DC/21-21/EX - Relay Module



2909514

<https://www.phoenixcontact.com/us/products/2909514>

## ZB 12:UNPRINTED - Zack marker strip

0812120

<https://www.phoenixcontact.com/us/products/0812120>



Zack marker strip, Strip, white, unlabeled, can be labeled with: PLOTMARK, CMS-P1-PLOTTER, mounting type: snapped, for terminal block width: 12.2 mm, lettering field size: 12 x 10.5 mm, Number of individual labels: 5

---

## ZB 12 CUS - Zack marker strip

0824942

<https://www.phoenixcontact.com/us/products/0824942>



Zack marker strip, can be ordered: Strip, white, labeled according to customer specifications, mounting type: snap into tall marker groove, for terminal block width: 12.2 mm, lettering field size: 10.5 x 12.15 mm, Number of individual labels: 5

# PLC-RPT- 24DC/21-21/EX - Relay Module



2909514

<https://www.phoenixcontact.com/us/products/2909514>

## ZB 12,LGS:L1-N,PE - Zack marker strip

0812146

<https://www.phoenixcontact.com/us/products/0812146>



Zack marker strip, Strip, white, labeled, printed horizontally: L1, L2, L3, N, PE, mounting type: snapped, for terminal block width: 12.2 mm, lettering field size: 10.5 x 12.15 mm, Number of individual labels: 5

---

## UC-TM 12 - Marker for terminal blocks

0819194

<https://www.phoenixcontact.com/us/products/0819194>



Marker for terminal blocks, Sheet, white, unlabeled, can be labeled with: BLUEMARK ID COLOR, BLUEMARK ID, BLUEMARK CLED, PLOTMARK, CMS-P1-PLOTTER, mounting type: snapped, for terminal block width: 12 mm, lettering field size: 11.45 x 10.5 mm, Number of individual labels: 40

# PLC-RPT- 24DC/21-21/EX - Relay Module



2909514

<https://www.phoenixcontact.com/us/products/2909514>

## UC-TM 12 CUS - Marker for terminal blocks

0824613

<https://www.phoenixcontact.com/us/products/0824613>



Marker for terminal blocks, can be ordered: by sheet, white, labeled according to customer specifications, mounting type: snap into tall marker groove, for terminal block width: 12 mm, lettering field size: 11.45 x 10.5 mm, Number of individual labels: 40

---

## UCT-TM 12 - Marker for terminal blocks

0829144

<https://www.phoenixcontact.com/us/products/0829144>



Marker for terminal blocks, Sheet, white, unlabeled, can be labeled with: TOPMARK NEO, TOPMARK LASER, BLUEMARK ID COLOR, BLUEMARK ID, BLUEMARK CLED, THERMOMARK PRIME, THERMOMARK CARD 2.0, THERMOMARK CARD, mounting type: snapped, for terminal block width: 12 mm, lettering field size: 10.8 x 9.6 mm, Number of individual labels: 30

# PLC-RPT- 24DC/21-21/EX - Relay Module



2909514

<https://www.phoenixcontact.com/us/products/2909514>

## UCT-TM 12 CUS - Marker for terminal blocks

0829630

<https://www.phoenixcontact.com/us/products/0829630>



Marker for terminal blocks, can be ordered: by sheet, white, labeled according to customer specifications, mounting type: snap into tall marker groove, for terminal block width: 12 mm, lettering field size: 10.8 x 9.6 mm, Number of individual labels: 30

---

## NS 35/ 7,5 PERF 2000MM - DIN rail perforated

0801733

<https://www.phoenixcontact.com/us/products/0801733>



DIN rail perforated, Pack of 25 (50 m), acc. to EN 60715, material: Steel, galvanized, passivated with a thick layer, Standard profile, color: silver

# PLC-RPT- 24DC/21-21/EX - Relay Module



2909514

<https://www.phoenixcontact.com/us/products/2909514>

## NS 35/ 7,5 UNPERF 2000MM - DIN rail, unperforated

0801681

<https://www.phoenixcontact.com/us/products/0801681>



DIN rail, unperforated, Pack of 25 (50 m), acc. to EN 60715, material: Steel, galvanized, passivated with a thick layer, Standard profile, color: silver

---

## NS 35/ 7,5 WH PERF 2000MM - DIN rail perforated

1204119

<https://www.phoenixcontact.com/us/products/1204119>



DIN rail perforated, Pack of 25 (50 m), acc. to EN 60715, material: Steel, Galvanized, white passivated, Standard profile, color: silver

# PLC-RPT- 24DC/21-21/EX - Relay Module



2909514

<https://www.phoenixcontact.com/us/products/2909514>

## NS 35/ 7,5 WH UNPERF 2000MM-VPE 10 - DIN rail, unperforated

1204122

<https://www.phoenixcontact.com/us/products/1204122>



DIN rail, unperforated, Pack of 10 (20 m), acc. to EN 60715, material: Steel, Galvanized, white passivated, Standard profile, color: silver

---

## NS 35/ 7,5 AL UNPERF 2000MM - DIN rail, unperforated

0801704

<https://www.phoenixcontact.com/us/products/0801704>



DIN rail, unperforated, Pack of 25 (50 m), acc. to EN 60715, material: Aluminum, uncoated, Standard profile, color: silver

# PLC-RPT- 24DC/21-21/EX - Relay Module



2909514

<https://www.phoenixcontact.com/us/products/2909514>

## NS 35/ 7,5 ZN PERF 2000MM - DIN rail perforated

1206421

<https://www.phoenixcontact.com/us/products/1206421>



DIN rail perforated, Pack of 25 (50 m), acc. to EN 60715, material: Steel, galvanized, Standard profile, color: silver

---

## NS 35/ 7,5 ZN UNPERF 2000MM - DIN rail, unperforated

1206434

<https://www.phoenixcontact.com/us/products/1206434>



DIN rail, unperforated, Pack of 25 (50 m), acc. to EN 60715, material: Steel, galvanized, Standard profile, color: silver

# PLC-RPT- 24DC/21-21/EX - Relay Module



2909514

<https://www.phoenixcontact.com/us/products/2909514>

## NS 35/ 7,5 CU UNPERF 2000MM-VPE 10 - DIN rail, unperforated

0801762

<https://www.phoenixcontact.com/us/products/0801762>



DIN rail, unperforated, Pack of 10 (20 m), acc. to EN 60715, material: Copper, uncoated, Standard profile, color: copper-colored

---

## NS 35/ 7,5 CAP - End cap

1206560

<https://www.phoenixcontact.com/us/products/1206560>



DIN rail end piece, for DIN rail NS 35/7.5

# PLC-RPT- 24DC/21-21/EX - Relay Module



2909514

<https://www.phoenixcontact.com/us/products/2909514>

## NS 35/15 PERF 2000MM - DIN rail perforated

1201730

<https://www.phoenixcontact.com/us/products/1201730>



DIN rail perforated, Pack of 25 (50 m), similar to EN 60715, material: Steel, galvanized, passivated with a thick layer, Standard profile, color: silver

---

## NS 35/15 UNPERF 2000MM - DIN rail, unperforated

1201714

<https://www.phoenixcontact.com/us/products/1201714>



DIN rail, unperforated, Pack of 25 (50 m), similar to EN 60715, material: Steel, galvanized, passivated with a thick layer, Standard profile, color: silver

# PLC-RPT- 24DC/21-21/EX - Relay Module



2909514

<https://www.phoenixcontact.com/us/products/2909514>

## NS 35/15 WH PERF 2000MM - DIN rail perforated

0806602

<https://www.phoenixcontact.com/us/products/0806602>



DIN rail perforated, Pack of 25 (50 m), similar to EN 60715, material: Steel, Galvanized, white passivated, Standard profile, color: white

---

## NS 35/15 WH UNPERF 2000MM-VPE 10 - DIN rail, unperforated

1204135

<https://www.phoenixcontact.com/us/products/1204135>



DIN rail, unperforated, Pack of 10 (20 m), similar to EN 60715, material: Steel, Galvanized, white passivated, Standard profile, color: silver

# PLC-RPT- 24DC/21-21/EX - Relay Module



2909514

<https://www.phoenixcontact.com/us/products/2909514>

## NS 35/15 AL UNPERF 2000MM - DIN rail, unperforated

1201756

<https://www.phoenixcontact.com/us/products/1201756>



DIN rail, unperforated, similar to EN 60715, material: Aluminum, uncoated, Standard profile, color: silver

---

## NS 35/15 ZN PERF 2000MM - DIN rail perforated

1206599

<https://www.phoenixcontact.com/us/products/1206599>



DIN rail perforated, Pack of 25 (50 m), similar to EN 60715, material: Steel, galvanized, Standard profile, color: silver

# PLC-RPT- 24DC/21-21/EX - Relay Module



2909514

<https://www.phoenixcontact.com/us/products/2909514>

## NS 35/15 ZN UNPERF 2000MM - DIN rail, unperforated

1206586

<https://www.phoenixcontact.com/us/products/1206586>



DIN rail, unperforated, Pack of 25 (50 m), similar to EN 60715, material: Steel, galvanized, Standard profile, color: silver

---

## NS 35/15 CU UNPERF 2000MM-VPE 10 - DIN rail, unperforated

1201895

<https://www.phoenixcontact.com/us/products/1201895>



DIN rail, unperforated, Pack of 10 (20 m), similar to EN 60715, material: Copper, uncoated, Standard profile, color: copper-colored

# PLC-RPT- 24DC/21-21/EX - Relay Module

2909514

<https://www.phoenixcontact.com/us/products/2909514>



## NS 35/15 CAP - End cap

1206573

<https://www.phoenixcontact.com/us/products/1206573>

DIN rail end piece, for DIN rail NS 35/15



---

## NS 35/15-2,3 UNPERF 2000MM-VPE 10 - DIN rail, unperforated

1201798

<https://www.phoenixcontact.com/us/products/1201798>



DIN rail, unperforated, Pack of 10 (20 m), acc. to EN 60715, material: Steel, galvanized, passivated with a thick layer, Standard profile 2.3 mm, color: silver

# PLC-RPT- 24DC/21-21/EX - Relay Module



2909514

<https://www.phoenixcontact.com/us/products/2909514>

## PLC-ATP BK - Separating plate

2966841

<https://www.phoenixcontact.com/us/products/2966841>



Separating plate, 2 mm thick, required at the start and end of a PLC terminal strip. Furthermore, it is used for: visual separation of groups, safe isolation of different voltages of neighboring PLC relays in acc. with DIN VDE 0106-101, isolation

---

## PLC-ESK GY - Power terminal block

2966508

<https://www.phoenixcontact.com/us/products/2966508>



Power terminal block, for the input of up to four potentials, for mounting on NS 35/7.5

# PLC-RPT- 24DC/21-21/EX - Relay Module



2909514

<https://www.phoenixcontact.com/us/products/2909514>

## SZF 1-0,6X3,5 - Screwdriver

1204517

<https://www.phoenixcontact.com/us/products/1204517>



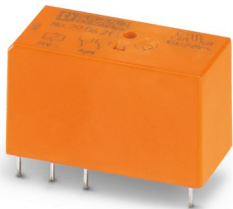
Actuation tool, for ST terminal blocks, also suitable for use as a bladed screwdriver, size: 0.6 x 3.5 x 100 mm, 2-component grip, with non-slip grip

---

## REL-MR-24DC/21-21/ATEX - Single relay

2906213

<https://www.phoenixcontact.com/us/products/2906213>



Plug-in miniature power relay, RT III sealed with power contacts, 2 changeover contacts, input voltage: 24 V DC, in connection with the corresponding PLC base approved in accordance with ATEX/IECEx (zone 2) and Ex zone class I, div. 2.

---

Phoenix Contact 2024 © - all rights reserved  
<https://www.phoenixcontact.com>

Phoenix Contact USA  
586 Fulling Mill Road  
Middletown, PA 17057, United States  
(+717) 944-1300  
[info@phoenixcon.com](mailto:info@phoenixcon.com)