

KGG-MC 1,5/ 8 - Cable housing



1834408

<https://www.phoenixcontact.com/us/products/1834408>

Please be informed that the data shown in this PDF document is generated from our online catalog. Please find the complete data in the user documentation. Our general terms of use for downloads are valid.



Cable housing, color: green, product range: KGG-MC 1,5, width: 14.5 mm

Commercial data

Item number	1834408
Packing unit	10 pc
Minimum order quantity	10 pc
Sales key	AA08
Product key	AAHZDB
Catalog page	Page 243 (C-1-2013)
GTIN	4017918051921
Weight per piece (including packing)	9.44 g
Weight per piece (excluding packing)	9.25 g
Customs tariff number	39269097
Country of origin	PL

KGG-MC 1,5/ 8 - Cable housing

1834408

<https://www.phoenixcontact.com/us/products/1834408>



Technical data

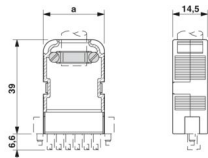
Product properties

Product type	Cable housing
Product family	KGG-MC 1,5
Number of positions	8
Pitch	3.81 mm

Material specifications

Flammability rating according to UL 94	HB
----------------------------------------	----

Dimensions

Dimensional drawing	
Width	14.5 mm
Height	45.6 mm
Pitch	3.81 mm

KGG-MC 1,5/ 8 - Cable housing

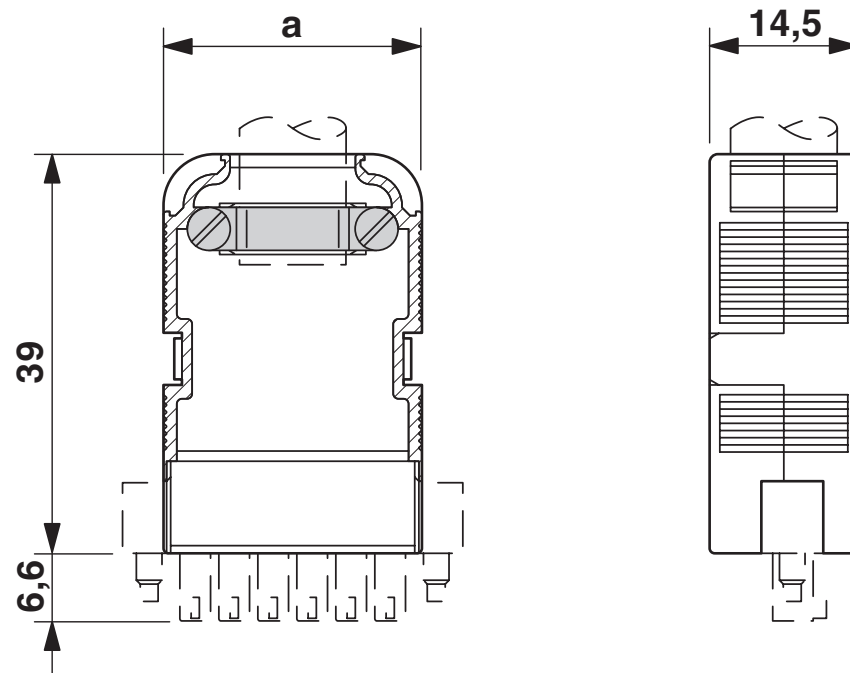
1834408

<https://www.phoenixcontact.com/us/products/1834408>



Drawings

Dimensional drawing



KGG-MC 1,5/ 8 - Cable housing

1834408

<https://www.phoenixcontact.com/us/products/1834408>



Classifications

ECLASS

ECLASS-11.0	27460402
ECLASS-12.0	27460402
ECLASS-13.0	27460402

ETIM

ETIM 9.0	EC002943
----------	----------

UNSPSC

UNSPSC 21.0	39121400
-------------	----------

KGG-MC 1,5/ 8 - Cable housing

1834408

<https://www.phoenixcontact.com/us/products/1834408>



Environmental product compliance

EU RoHS	
Fulfills EU RoHS substance requirements	Yes, No exemptions
China RoHS	
Environment friendly use period (EFUP)	EFUP-E
	No hazardous substances above the limits
EU REACH SVHC	
REACH candidate substance (CAS No.)	No substance above 0.1 wt%

KGG-MC 1,5/ 8 - Cable housing

1834408

<https://www.phoenixcontact.com/us/products/1834408>



Accessories

SBS10:UNBEDRUCKT - Marker card

1007248

<https://www.phoenixcontact.com/us/products/1007248>



Marker card, Card, white, unlabeled, can be labeled with: Marker pen, perforated, mounting type: snapped, snap into flat marker groove, for terminal block width: 10 mm, lettering field size: 6 x 10.1 mm, Number of individual labels: 250

KGG-MC 1,5/ DST - Marking material

1839050

<https://www.phoenixcontact.com/us/products/1839050>



Transparent label carrier, can be marked with marker strips SBS 10

KGG-MC 1,5/ 8 - Cable housing

1834408

<https://www.phoenixcontact.com/us/products/1834408>



CUC-DST-ABK-CP7,5 - Bend protection sleeve

1419794

<https://www.phoenixcontact.com/us/products/1419794>



Bend protection sleeve, degree of protection: IP20, color: black

CUC-DST-ABK-CP9 - Bend protection sleeve

1419792

<https://www.phoenixcontact.com/us/products/1419792>



Bend protection sleeve, degree of protection: IP20, color: black

KGG-MC 1,5/ 8 - Cable housing

1834408

<https://www.phoenixcontact.com/us/products/1834408>



CUC-DST-ABK-CP9,7 - Bend protection sleeve

1419793

<https://www.phoenixcontact.com/us/products/1419793>

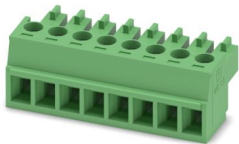
Bend protection sleeve, degree of protection: IP20, color: black



MC 1,5/ 8-ST-3,81 - PCB connector

1803633

<https://www.phoenixcontact.com/us/products/1803633>



PCB connector, nominal cross section: 1.5 mm², color: green, nominal current: 8 A, rated voltage (III/2): 160 V, contact surface: Tin, contact connection type: Socket, number of potentials: 8, number of rows: 1, number of positions: 8, number of connections: 8, product range: MC 1,5/-ST, pitch: 3.81 mm, connection method: Screw connection with tension sleeve, screw head form: L Slotted, conductor/PCB connection direction: 0 °, plug-in system: COMBICON MC 1,5, locking: without, mounting: without, type of packaging: packed in cardboard

KGG-MC 1,5/ 8 - Cable housing

1834408

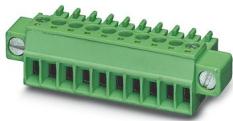
<https://www.phoenixcontact.com/us/products/1834408>



MC 1,5/ 8-STF-3,81 - PCB connector

1827761

<https://www.phoenixcontact.com/us/products/1827761>

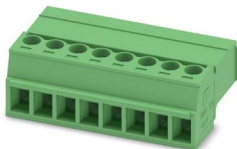


PCB connector, nominal cross section: 1.5 mm², color: green, nominal current: 8 A, rated voltage (III/2): 160 V, contact surface: Tin, contact connection type: Socket, number of potentials: 8, number of rows: 1, number of positions: 8, number of connections: 8, product range: MC 1,5/...-STF, pitch: 3.81 mm, connection method: Screw connection with tension sleeve, screw head form: L Slotted, conductor/PCB connection direction: 0 °, plug-in system: COMBICON MC 1,5, locking: Screw locking mechanism, mounting: Screw flange, type of packaging: packed in cardboard

IMC 1,5/ 8-ST-3,81 - PCB connectors

1857948

<https://www.phoenixcontact.com/us/products/1857948>



PCB connector, nominal cross section: 1.5 mm², color: green, nominal current: 8 A, rated voltage (III/2): 160 V, contact surface: Tin, contact connection type: Pin, number of potentials: 8, number of rows: 1, number of positions: 8, number of connections: 8, product range: IMC 1,5/...-ST, pitch: 3.81 mm, connection method: Screw connection with tension sleeve, screw head form: L Slotted, conductor/PCB connection direction: 0 °, plug-in system: COMBICON MC 1,5, locking: without, mounting: without, type of packaging: packed in cardboard

Phoenix Contact 2024 © - all rights reserved
<https://www.phoenixcontact.com>

Phoenix Contact USA
586 Fulling Mill Road
Middletown, PA 17057, United States
(+717) 944-1300
info@phoenixcon.com