



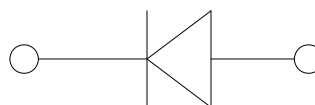
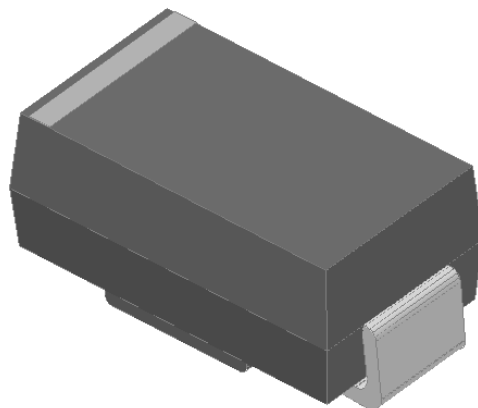
**Schottky Diodes**  
**Reverse Voltage-40to200v**  
**Forward current-3A**

**Features**

Schottky chip  
Ideal for surface mounted applications  
Low forward voltage drop, Low power loss, high efficiency  
Plastic Case Material has UL Flammability

**Mechanical Data**

Package: SMA  
Terminals: Tin Plated leads, solderable per  
Mil-STD-750 Method 2026  
Polarity: As marked  
Molding compound meets UL 94 V-0 flammability rating,  
ROHS-compliant



**Maximum Ratings (Ta=25°C Unless otherwise specified)**

Type Number	SYMBOL	SS34A	SS36A	SS38A	SS310A	SS315A	SS320A	Umit
Maximum Recurrent Peak Reverse Voltage	V <sub>RRM</sub>	40	60	80	100	150	200	V
Maximum RMS Voltage	V <sub>RMS</sub>	28	42	56	70	105	140	V
Maximum DC Blocking Voltage	V <sub>DC</sub>	40	60	80	100	150	200	V
Maximum Average Forward Rectified Current	IO(AV)	3.0						A
Peak Forward Surge Current 8.3ms Single half-sine-wave superimposed on rated load(JEDEC Method) on rated	IFSM	60.0						A
Forward Surge Current (Non-repetitive) @1ms, square wave, 1 cycle, Tj=25℃		120.0						A
Current squared time @1ms≤t≤8.3≤ms Tj=25℃, Rating of per diode	I²t	14.9						A²S
Maximum Forward Voltage at 3.0A DC	V <sub>FM</sub>	0.55	0.75	0.85		0.92		V
Maximum Reverse Current TA = 25℃	IR	0.1		0.05				mA
at Rated DC Blocking Voltage TA = 100℃		20		10				mA
Typical Thermal Resistance	R <sub>QJA</sub>	65.0						℃/W
Operating Junction Temperature Range	T <sub>J</sub>	—55to+150						℃
Storage Temperature Range	T <sub>STG</sub>	—55to+150						℃



FIG. 1 MAXIMUM AVERAGE FORWARD CURRENT DERATING

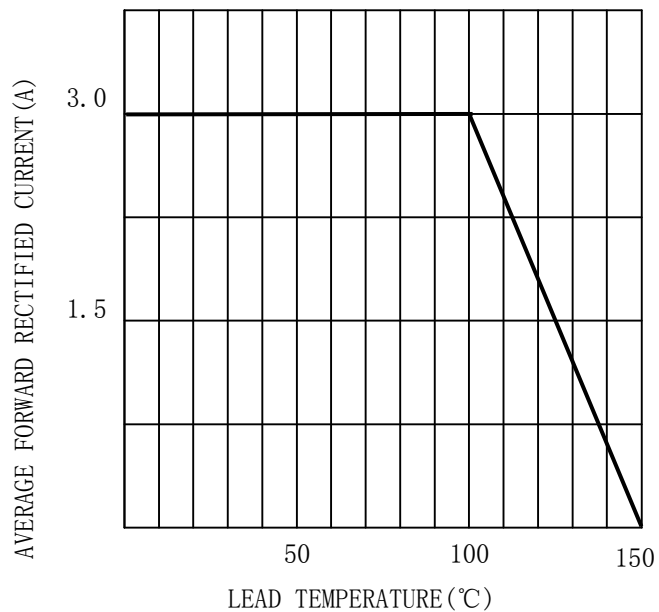


FIG. 2 TYPICAL FORWARD CHARACTERISTICS

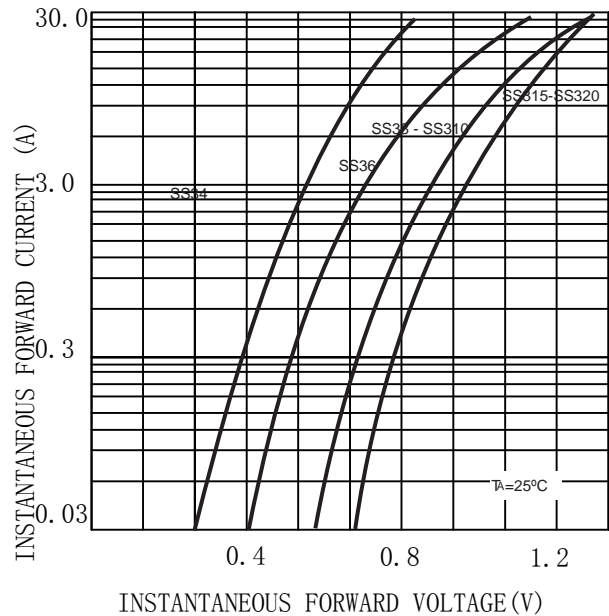


FIG. 3 MAXIMUM NON-REPEITIVE SURGE CURRENT

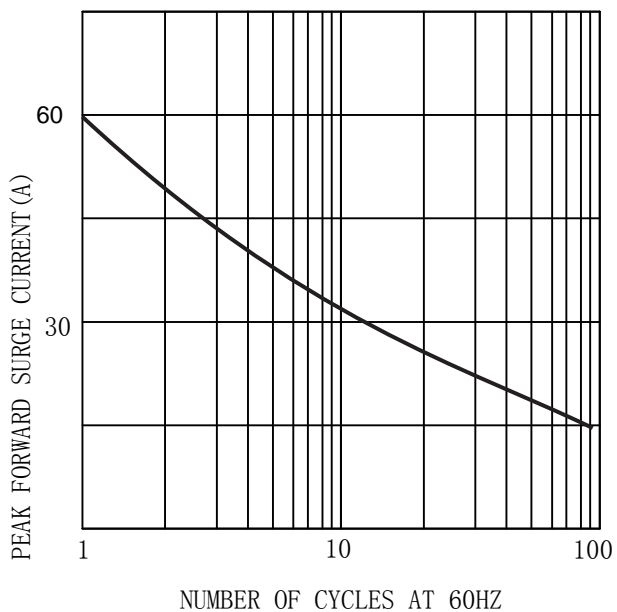
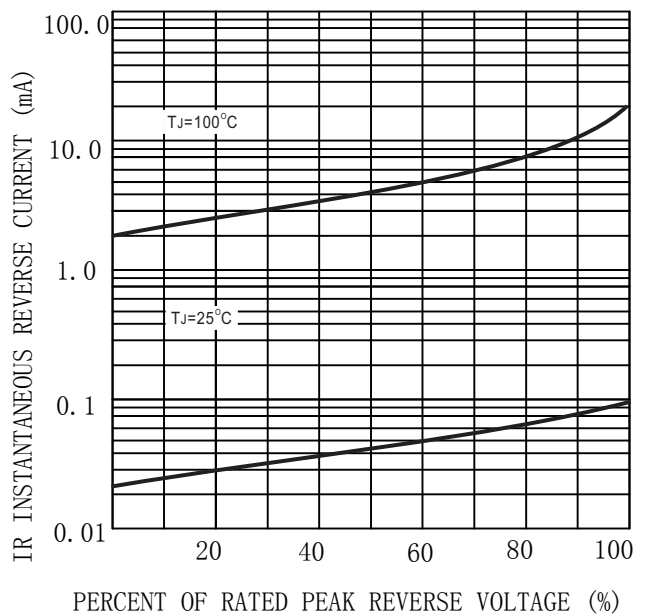



FIG. 4 TYPICAL REVERSE CHARACTERISTICS (per element)





## MARKING INFORMATION



 = Logo

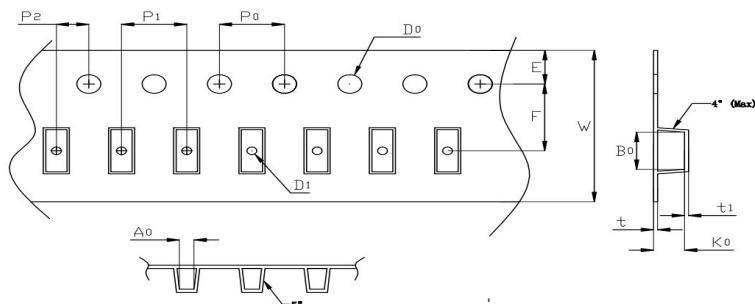
\*\*\*\* = Date Code Marking

SS\*\*\* = Marking Code

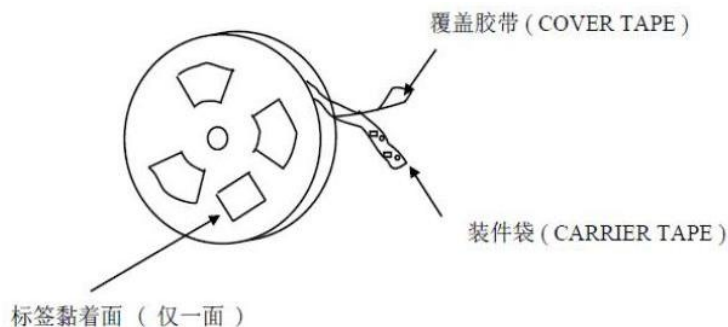
Print according to customer request

## PACKING REQUIRMENTS

- Carrier tape packing



Specificati ons	Carrier tape type	Ao	Bo	Ko	Po	W	t	Explain
SMA	Anti-static	2.65± 0.10	5.20± 0.10	2.30± 0.10	4.00± 0.10	12.0± 0.10	0.20± 0.05	

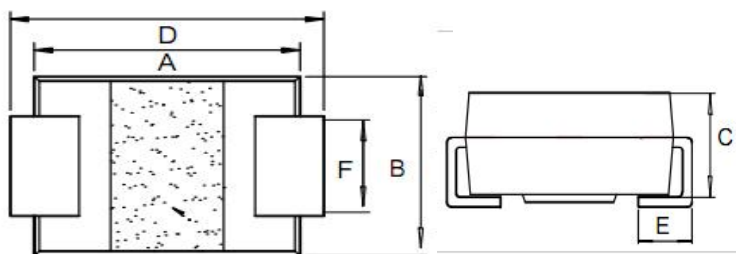


DEVICE TYPE	Tape width	11"Reel			11"Reel		
		Q'TY/REEL (pcs)	BOX/CAR TOON	Q'TY/REEL (pcs)	Q'TY/REEL (pcs)	BOX/CAR TOON	Q'TY/REEL (pcs)
SMA	12mm	5000	20	100000	5000	18	90000



## Outline Dimensions

SMA



SMA				
DIM	INCHES		MM	
	MIN	MAX	MIN	MAX
A	0.16	0.18	4.05	4.65
B	0.09	0.11	2.4	2.8
C	0.07	0.09	1.8	2.3
D	0.18	0.21	4.67	5.27
E	0.04	0.06	1	1.4
F	0.05	0.06	1.2	1.6





## **Important Statements and disclaimers.**

Do not copy or modify file information without permission.

Xumao Micro reserves the right to modify this document and its products.

Specifications are available without prior notice. Customer shall obtain and confirm the latest product information and specifications prior to final design, purchase or use.

Xumao Micro does not assume any implied warranties, including warranties of fitness for special purposes, non-infringement and merchantability.

The products shown here are not designed and licensed for demanding equipment at a level of reliability or for human life and any life-saving related applications or life-sustaining, such as medical devices, transportation equipment, aerospace machinery, and so on. Customers who use or sell these products for such applications do so at their own risk.

As Xumao Micro uses batch number as tracking benchmark, please provide batch number for tracking in case of exception.