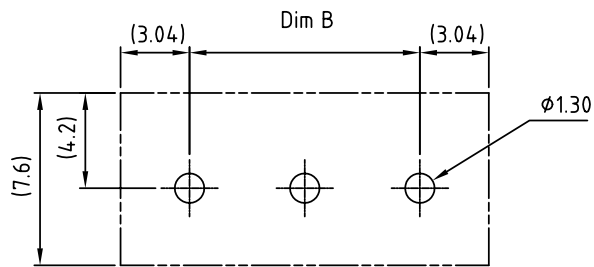
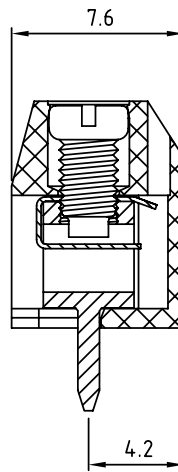


N=NUMBER OF CONTACTS



RECOMMENDED PCB LAYOUT



N = Number of poles
 Dim A=Nx5.08
 Dim B=(N-1)x5.08

	Dim A	Dim B
2-6p	±0.15	±0.10
7-12p	±0.20	±0.20
13-18p	±0.30	±0.25
19-24p	±0.40	±0.30

SIGN	DATE	DESCRIPTION	APPROVER
△	02/09'06	Part No. is changed.	Marvin
△	06/23'06	Touque standard is changed from 3.5 Lb-In to 2.6 Lb-In	Marvin
△	06/23'06	Added cULus logo	Marvin
△	04/03'10	Part No. is changed.	Tason

THIS IS CAD DRAWING, DO NOT REVISE MANUALLY!!!

Material

- Terminal body (metal housing): Brass(CuZn)
- Terminal screw: Steel Zinc plating "-" slot type
- Wire guard: Stainless steel
- Surface of solder tail: Tin plated
- Insulator (housing): Thermoplastic (UL94V-0)

Electrical cULus

- Voltage rating: 300VAC
- Current rating: 15A
- Wire range:
 - Solid wire(AWG): 14-22
 - Stranded wire(AWG): 14-22
- △ Torque: 2.6Lb-In
- Screw: M2.6
- Wire strip length: 5-6mm
- Withstanding Voltage: 1.6KV
- Operating temperature: -40°C to +115°C
- Soldering temperature: 250°C±10°C/5 Sec
- △ Safety Approval: cULus

TC [△]xx 2 3 x x [△]xxxx G [△] [△]

POLES	COLOR	DIM C Length	000 0 Standard
02 02 CONTACTS	0 BLACK	0 4.4mm	Any special item by
03 03 CONTACTS	5 GREEN(RAL6018/T)	1 3.8mm	customer request,
...	6 BLUE	2 3.5mm	please contact sales
24 24 CONTACTS			department.

ANYTEK

CUSTOMER COPY

ALL RIGHTS RESERVED. REPRODUCTION OR ISSUE TO THIRD PARTIES IN ANY FORM WHATSOEVER IS NOT PERMITTED WITHOUT WRITTEN AUTHORITY FROM THE PROPRIETOR. PROPERTY OF ANYTEK TECHNOLOGY CO., LTD

TITLE		TC-5.08 Series 2-Interlock				
PART NO.		TCxx23xxxxxxG [△]		DWG NO.		8TC0603
APPROVED		CHECKED	DESIGNED	DRAWN	CUST NO.	
		Tason 2010.04.03	Tason 2010.04.03		Tolerance	
					UNIT: mm	X. ±0.50
				SHEET: 01/01	SCALE: NONE	X.X ±0.30
					REV.: B	X.XX ±0.10
						X° ±1°

Mouser Electronics

Authorized Distributor

Click to View Pricing, Inventory, Delivery & Lifecycle Information:

Amphenol:

[TC0223620000G](#) [TC0323620000G](#) [TC0423620000G](#) [TC0523620000G](#) [TC0623620000G](#) [TC0723620000G](#)
[TC0823620000G](#) [TC0923620000G](#) [TC1023620000G](#) [TC1123620000G](#) [TC1223620000G](#) [TC1323620000G](#)
[TC1423620000G](#) [TC1523620000G](#) [TC1623620000G](#) [TC1723620000G](#) [TC1823620000G](#) [TC1923620000G](#)
[TC2023620000G](#) [TC2123620000G](#) [TC2223620000G](#) [TC2323620000G](#) [TC2423620000G](#) [TC0623020000G](#)
[TC0723020000G](#) [TC0323500000G](#) [TC0223500000G](#) [TC0323020000G](#) [TC0423020000G](#) [TC0223020000G](#)
[TC0423320000G](#)