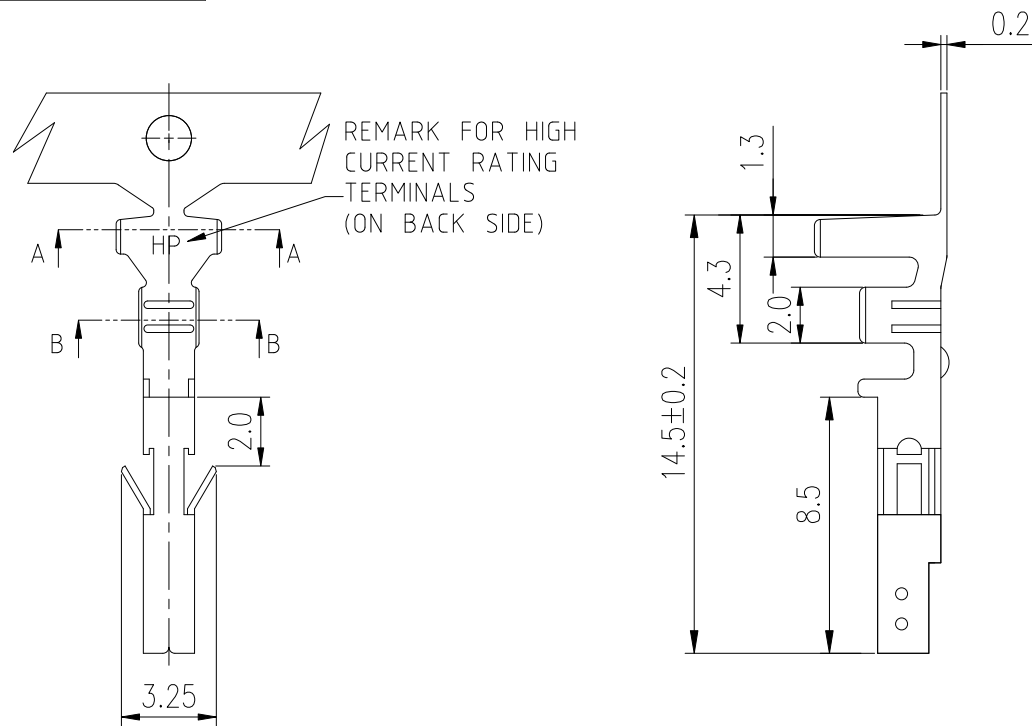


PRODUCT NUMBER

SEE PART NO. TABLE



NOTES:

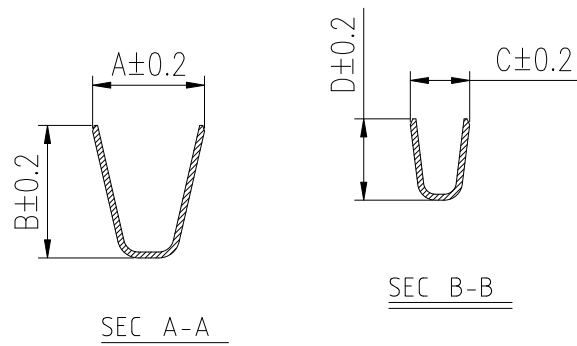
1. MATERIAL: HIGH CONDUCTIVITY COPPER ALLOY.
2. THIS TERMINAL IS USED WITH FCI RECEPTACLE HSG 10127815 AND 10122956 SERIES.
3. MATE WITH FCI HCC HEADERS AND PLUG TERMINALS FOR HIGH CURRENT APPLICATION.
4. PRODUCT SPECIFICATION: GS-12-1333.
5. PACKAGE SPECIFICATION: GS-14-2362.
6. PART NUMBER SCHEME:
10136289- 1 X 1 X LF

PLATING TYPE:
P: PRE-PLATED
BLANK: POST-PLATED

PLATING CODE:
1: GOLD FLASH
2: TIN

7. DIMENSIONAL & PART NO. TABLE:

PART NO.	A	B	C	D	APPLICABLE WIRES
10136289-1X1XLF	3.7	4.5	1.8	2.7	#16~#20 MAX. OD: 3.1mm



mat'l. code				surface	tolerance	projection	product family			
				✓			MINITEK PWR4.2 HCC			
ltr	ecn no	dr	date	tolerances unless otherwise specified			title			
A		TAI	2015-07-27	angles	mm		MINITEK PWR4.2 REC. TERMINAL			
				mm	mm		HIGH CURRENT RATING			
				X°±1°		scale				
		dr	KENNY TAI	2015-07-23			dwg no		sheet 1 of 1	size
		enr	KENNY TAI	2015-07-23			10136289			A4
		chr	KENNY TAI	2015-07-23						
		appd	PM ZHENG	2015-07-27			type		CUSTOMER Drawing	
sheet index	revision sheet	A	1							