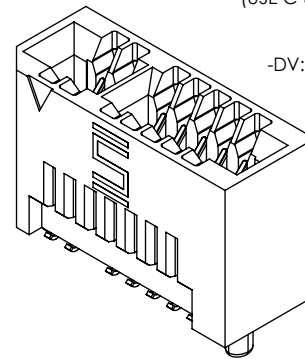
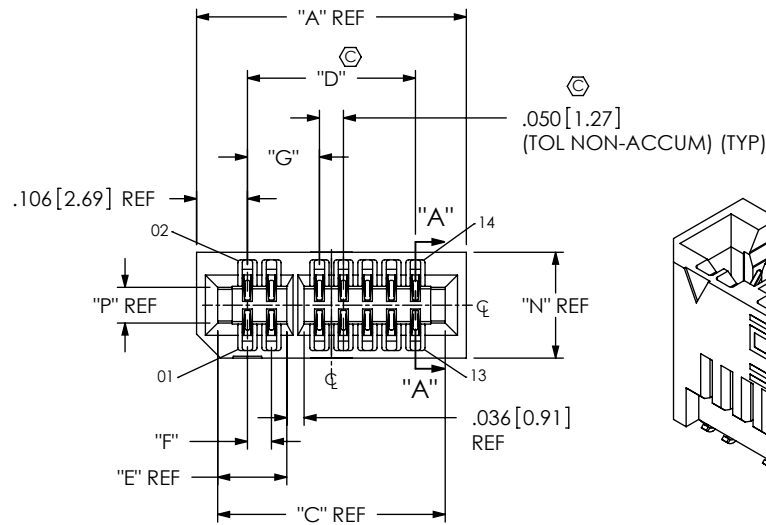


DO NOT  
SCALE FROM  
THIS PRINT

No OF POSITIONS (PER ROW)  
-05, -08, -20, -30, -40, -50, \*-60, \*-70  
(SEE TABLE 2 FOR POSITION  
REMOVED TO POLARIZE)

CARD THICKNESS  
-01: .062" [1.57mm] THICK  
-02: .093" [2.36mm] THICK

PLATING SPECIFICATION  
-L: SELECTIVE LIGHT GOLD/TIN TAIL  
(USE C-308-01-L)

ROW SPECIFICATION  
-DV: DOUBLE ROW VERTICAL

## PACKAGING

-K: POLYIMIDE FILM PAD (SEE TABLE 6, SHT 2)  
AVAILABLE WITH -TR ONLY.  
(-05 THRU -50 POS ONLY)  
-TR: TAPE & REEL (-05 THRU -50 POS ONLY)

## OPTION

-NP: NON-POLARIZED  
(-05, -08, -20 & -30 POSITIONS ONLY)  
(USE MECF-XX-XX-DV-NP)  
-WT: WELD TABS  
(STANDARD ON -02 CARD THICKNESS)  
(OPTIONAL ON -01 CARD THICKNESS)

(\* = NOT TOOLED)

TABLE 1	
No OF POS	COPLANARITY
-05 THRU -30	.0040 [0.102]
-40 THRU -70	.0060 [0.157]

TABLE 2

No OF POS	POLARIZED POSITIONS	"Y"
**05	3, 4	2
**08	5, 6	2
**20	15, 16	2
**30	21, 22	2
**40	31, 32	2
**50	41, 42	2
***60	31, 32 & 63, 64	4
***70	53, 54 & 115, 116	4

(\* = NOT TOOLED)  
(\*\* = TOTAL NUMBER OF POSITIONS  
WILL BE REDUCED BY "Y" FOR  
POLARIZATION)

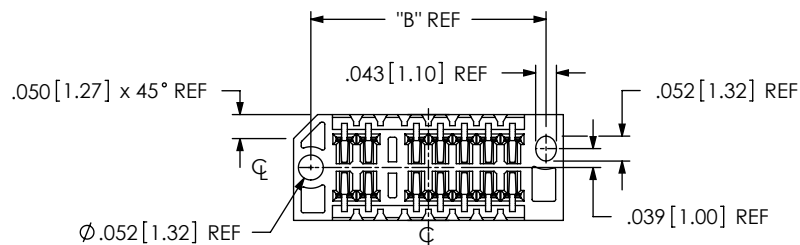
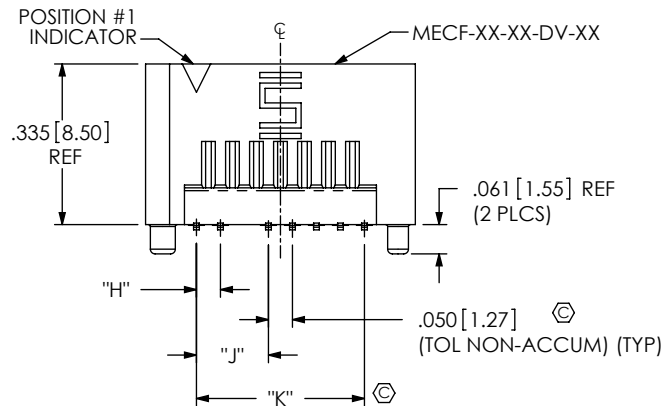


TABLE 3						
No. OF POS. PER ROW	"A"	"B"	"C"	"D"	"E"	
-05	0.412 [10.46]	0.340 [8.64]	0.3240 [8.230]	0.200 [5.08]	0.094 [2.39]	
-08	0.562 [14.27]	0.490 [12.45]	0.4740 [12.040]	0.350 [8.89]	0.144 [3.66]	
-20	1.162 [29.51]	1.090 [27.69]	1.0740 [27.280]	0.950 [24.13]	0.394 [10.01]	
-30	1.662 [42.21]	1.590 [40.39]	1.5740 [39.980]	1.450 [36.83]	0.544 [13.82]	
-40	2.162 [54.91]	2.090 [53.09]	2.0740 [52.680]	1.950 [49.53]	0.794 [20.17]	
-50	2.662 [67.61]	2.590 [65.79]	2.5740 [65.380]	2.450 [62.23]	1.044 [26.52]	
*-60	3.162 [80.31]	3.090 [78.49]	3.0740 [78.080]	2.950 [74.93]	0.794 [20.17]	
*-70	3.662 [93.01]	3.590 [91.19]	3.5740 [90.780]	3.450 [87.63]	1.344 [34.14]	
No. OF POS. PER ROW	"F"	"G"	"H"	"J"	"K"	
-05	N/A	N/A	0.1000 [2.540]	N/A	0.100 [2.54]	0.200 [5.08]
-08	0.0500 [1.270]	0.1500 [3.810]	0.050 [1.27]	0.150 [3.81]	0.350 [8.89]	
-20	0.3000 [7.620]	0.4000 [10.160]	0.300 [7.62]	0.400 [10.16]	0.950 [24.13]	
-30	0.4500 [11.430]	0.5500 [13.970]	0.450 [11.43]	0.550 [13.97]	1.450 [36.83]	
-40	0.7000 [17.780]	0.8000 [20.320]	0.700 [17.78]	0.800 [20.32]	1.950 [49.53]	
-50	0.9500 [24.130]	1.0500 [26.670]	0.950 [24.13]	1.050 [26.67]	2.450 [62.23]	
*-60	0.7000 [17.780]	0.8000 [20.320]	0.700 [17.78]	0.800 [20.32]	2.950 [74.93]	
*-70	1.2500 [31.750]	1.3500 [34.290]	1.250 [31.75]	1.350 [34.29]	3.450 [87.63]	

(\* = NOT TOOLED)

TABLE 4				
CARD THICKNESS	"N"	"P"	"R"	"S"
-01 (.062 in)	0.220 [5.60]	0.074 [1.89]	0.022 [0.55]	0.183 [4.66]
-02 (.093 in)	0.248 [6.30]	0.106 [2.68]	0.053 [1.34]	0.215 [5.45]

FIG 1

(MECF-08-01-XX-DV-XX SHOWN)

## NOTES:

- ① REPRESENTS A CRITICAL DIMENSION.
- BURR ALLOWANCE: .0015 [0.04] MAX.
- MINIMUM PUSHOUT FORCE: 0.50 LBS.
- ALL TAIL TO TAIL DIMENSIONS MEASURED TIP TO TIP.
- ASSEMBLIES TO BE PACKAGED IN TUBES, UNLESS -TR IS SPECIFIED.
- MATING EDGE CARD THICKNESS TOLERANCE NOT TO EXCEED ±10%

UNLESS OTHERWISE SPECIFIED,  
DIMENSIONS ARE IN INCHES  
[MILLIMETERS]

TOLERANCES ARE:  
DECIMALS ANGLES  
.XX: ± .01 [0.3]  
.XXX: ± .005 [0.13]  
.XXXX: ± .0020 [0.051]

## PROPRIETARY NOTE

THIS DOCUMENT CONTAINS INFORMATION  
CONFIDENTIAL AND PROPRIETARY TO  
SAMTEC, INC. AND SHALL NOT BE REPRODUCED  
OR TRANSFERRED TO OTHER DOCUMENTS OR  
DISCLOSED TO OTHERS OR USED FOR ANY  
PURPOSE OTHER THAN THAT WHICH IT WAS  
OBTAINED WITHOUT THE EXPRESSED WRITTEN  
CONSENT OF SAMTEC, INC.

MATERIAL: DO NOT SCALE DRAWING

SHEET SCALE: 1:0.4

INSULATOR: LCP,  
COLOR: -01 CARD THICKNESS BLACK,  
-02 CARD THICKNESS NATURAL  
CONTACT: BeCu ALLOY

**samtec**

520 PARK EAST BLVD, NEW ALBANY, IN 47150  
PHONE: 812-944-6733 FAX: 812-948-5047  
e-Mail: info@SAMTEC.com code: 55322

DESCRIPTION:

MECF .050" EDGE CARD ASSEMBLY

DWG. NO.

MECF-XX-XX-XX-DV-XX-XX

BY: KNOWLDEN

3/12/10

SHEET 1 OF 3

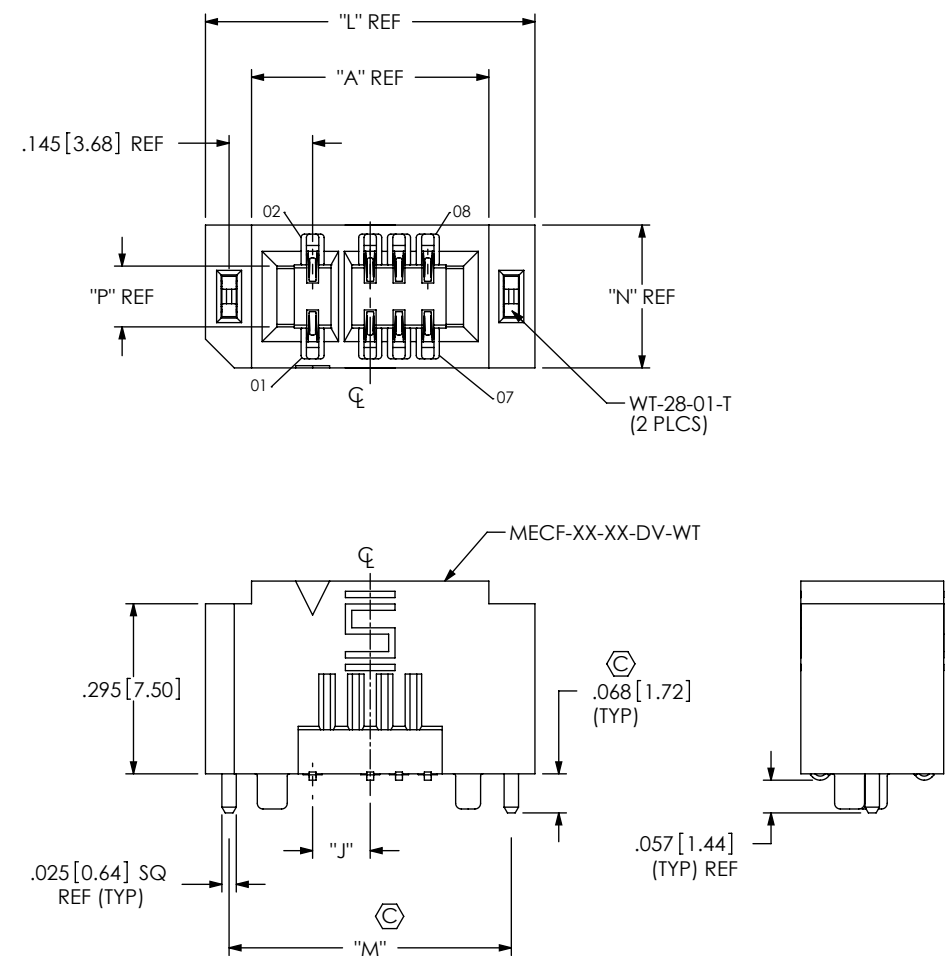


TABLE 5				
No. OF POS. PER ROW	"L"		"M"	
-05	0.572	[14.53]	0.490	[12.45]
-08	0.722	[18.34]	0.640	[16.26]
-20	1.322	[33.58]	1.240	[31.50]
-30	1.822	[46.28]	1.740	[44.20]
-40	2.322	[58.98]	2.240	[56.90]
-50	2.822	[71.68]	2.740	[69.60]
*-60	3.322	[84.38]	3.240	[82.30]
*-70	3.822	[97.08]	3.740	[95.00]

(\* = NOT TOOLED)

FIG 2  
(MECE-05-02-XX-DV-WT SHOWN)  
(SAME AS FIG 1, EXCEPT AS SHOWN)

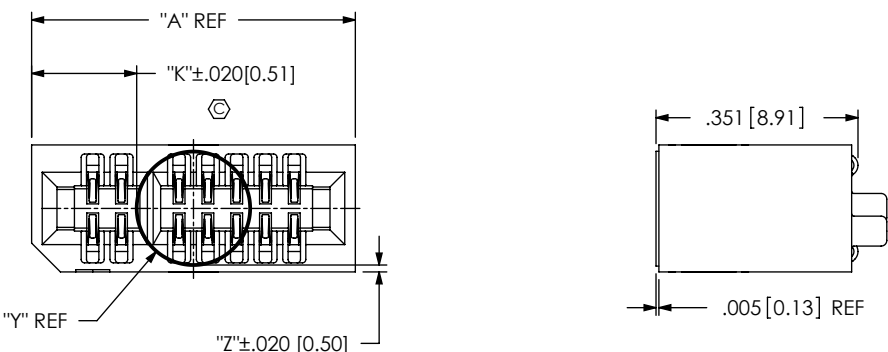
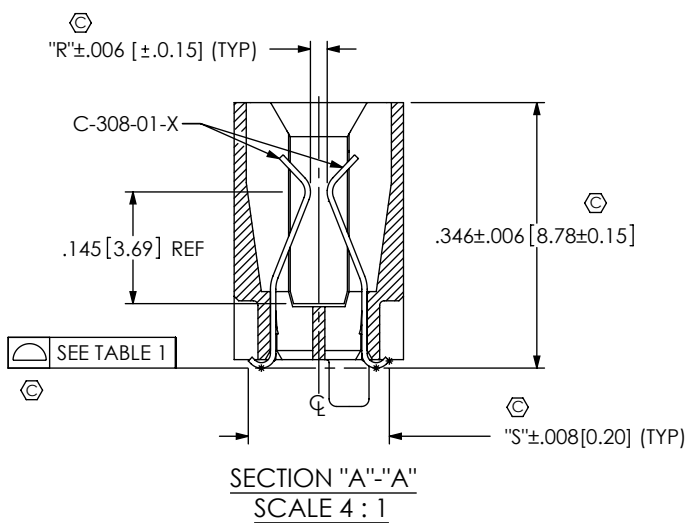


FIG 3  
-K OPTION  
(MECE-08-02-XX-DV-WT SHOWN)

TABLE 6									
BOARD THICKNESS	"Y"	"Z"	"K"						KAPTON CALL-OUT
			No OF POSITIONS PER ROW						
			-05	-08	-20	-30	-40	-50	
-01	.197 [5.00]	.012 [3.0]	.108 [2.74]	.183 [4.65]	.483 [12.27]	.733 [18.62]	.983 [24.97]	1.233 [31.32]	K-DOT-.197-.344-.005
-02	.236 [5.70]	.006 [1.5]	.088 [2.24]	.163 [4.14]	.463 [11.76]	.713 [18.11]	.963 [24.46]	1.213 [30.81]	K-DOT-.236-.343-.005
-01 WITH -WT	.197 [5.00]	.012 [3.0]	.188 [4.78]	.263 [6.68]	.563 [14.30]	.813 [20.65]	1.063 [27.00]	1.313 [33.35]	K-DOT-.197-.344-.005
-02 WITH -WT	.236 [5.72]	.006 [1.5]	.168 [4.42]	.243 [6.32]	.543 [13.94]	.793 [20.29]	1.043 [26.64]	1.293 [32.99]	K-DOT-.236-.343-.005

PROPRIETARY NOTE  
THIS DOCUMENT CONTAINS INFORMATION  
CONFIDENTIAL AND PROPRIETARY TO  
SAMTEC, INC. AND SHALL NOT BE REPRODUCED  
OR TRANSFERRED TO OTHER DOCUMENTS OR  
DISCLOSED TO OTHERS OR USED FOR ANY  
PURPOSE OTHER THAN THAT WHICH IT WAS  
OBTAINED WITHOUT THE EXPRESSED WRITTEN  
CONSENT OF SAMTEC, INC.

DO NOT SCALE DRAWING

SHEET SCALE: 1:0.444444

520 PARK EAST BLVD, NEW ALBANY, IN 47150  
PHONE: 812-944-6733 FAX: 812-948-5047  
e-Mail: info@SAMTEC.com code: 55322

DESCRIPTION:  
MECE .050" EDGE CARD ASSEMBLY

DWG. NO.  
MECE-XX-XX-XX-DV-XX-XX

BY: KNOWLDEN 3/12/10 SHEET 2 OF 3

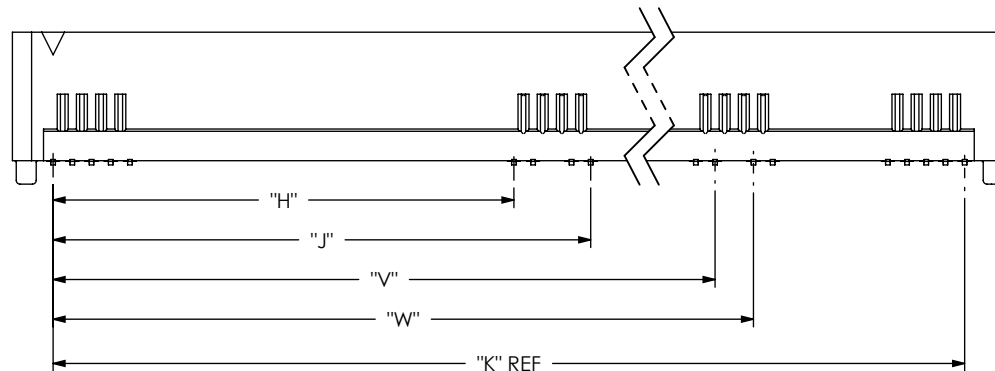
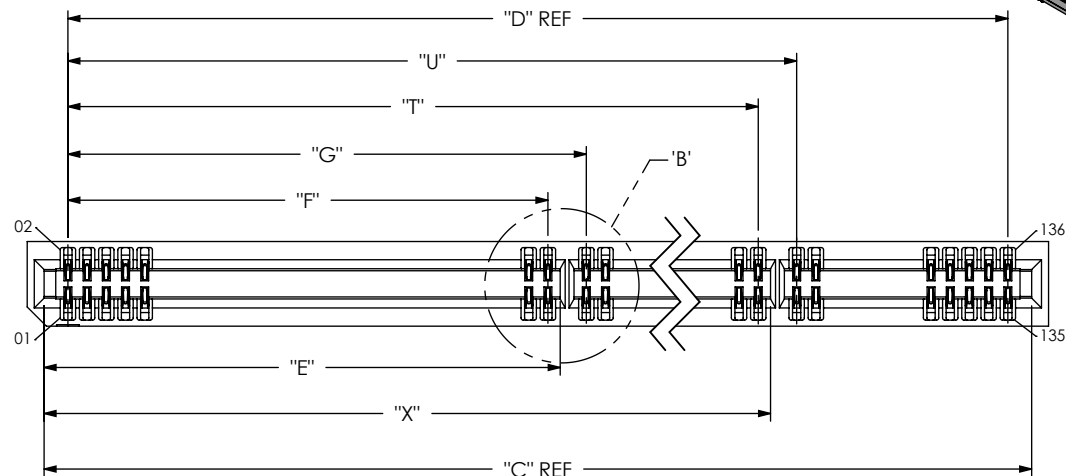
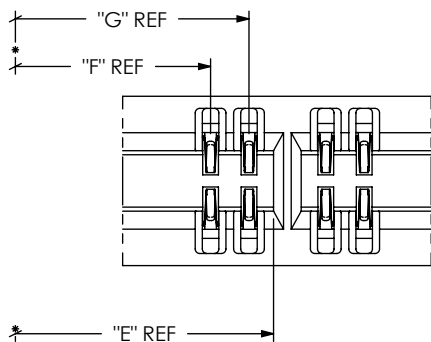
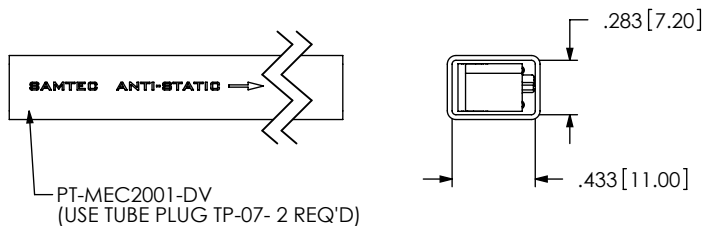
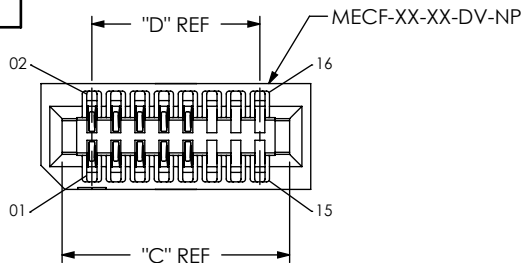


TABLE 7

No. OF POS. PER ROW	"T"		"U"		"V"		"W"		"X"	
*-60	1.5000	[38.100]	1.600	[40.640]	1.500	[38.10]	1.600	[40.64]	1.594	[40.49]
*-70	2.8000	[71.120]	2.900	[73.660]	2.800	[71.12]	2.900	[73.66]	2.894	[73.51]

(\* = NOT TOOLED)

FIG 5  
(MECF-70-01-XX-DV-XX SHOWN)  
(SAME AS FIG 1, EXCEPT AS SHOWN)  
(SOME CENTER FEATURES REMOVED FOR CLARITY)  
(NOT TOOLED)

PROPRIETARY NOTE  
THIS DOCUMENT CONTAINS INFORMATION  
CONFIDENTIAL AND PROPRIETARY TO  
SAMTEC, INC. AND SHALL NOT BE REPRODUCED  
OR TRANSFERRED TO OTHER DOCUMENTS OR  
DISCLOSED TO OTHERS OR USED FOR ANY  
PURPOSE OTHER THAN THAT WHICH IT WAS  
OBTAINED WITHOUT THE EXPRESSED WRITTEN  
CONSENT OF SAMTEC, INC.

DO NOT SCALE DRAWING

SHEET SCALE: 1:0.4

**samtec**

520 PARK EAST BLVD, NEW ALBANY, IN 47150  
PHONE: 812-944-6733 FAX: 812-948-5047  
e-Mail: info@SAMTEC.com code: 55322

DESCRIPTION:  
MECF .050" EDGE CARD ASSEMBLY

DWG. NO.  
**MECF-XX-XX-XX-DV-XX-XX**

BY: KNOWLDEN3/12/10 SHEET 3 OF 3