



TAI-SAW TECHNOLOGY CO., LTD.

No. 3, Industrial 2nd Rd., Ping-Chen Industrial District,
Taoyuan, 324, Taiwan, R.O.C.

TEL: 886-3-4690038 FAX: 886-3-4697532

E-mail: tstsales@mail.taisaw.com Web: www.taisaw.com

Product Specification Approval Sheet

Product Name: SAW Filter 446MHz 8MHz BW SMD 3.8x3.8mm

TST Parts No.:TA0381A

Customer Parts No.:_____

Customer signature required
Company:_____
Division:_____
Approved by :_____
Date:_____

Checked by:_____ Anne Chen 

Approved by:_____ Bob Chau 

Date:_____ 05, 08, 2014

1. Customer signed back is required before TST can proceed with sample build and receive orders.
2. Orders received without customer signed back will be regarded as agreement on the specifications.
3. Any specifications changes must be approved upon by both parties and a new revision of specifications shall be released to reflect the changes.



TAI-SAW TECHNOLOGY CO., LTD.

No. 3, Industrial 2nd Rd., Ping-Chen Industrial District,
Taoyuan, 324, Taiwan, R.O.C.

TEL: 886-3-4690038 FAX: 886-3-4697532

E-mail: tstsales@mail.taisaw.com Web: www.taisaw.com

SAW Filter 446 MHz

MODEL NO.: TA0381A

REV.NO.:2

A. MAXIMUM RATING:

1. Input Power Level: 15 dB_m
2. DC voltage: 3 V
3. Operating Temperature: -10°C to +50°C
4. Storage Temperature: -40°C to +85°C

RoHS Compliant
Lead free
Lead-free soldering

Electrostatic Sensitive Device (ESD)

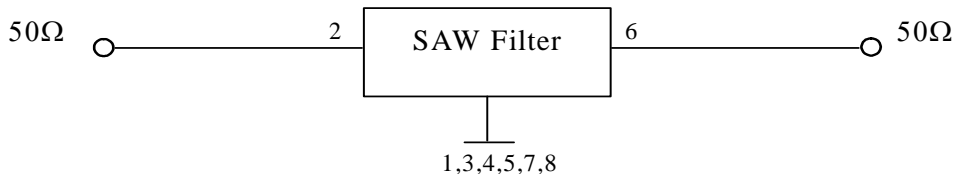
B. ELECTRICAL CHARACTERISTICS:

Item	Min.	Typ.	Max.
Center frequency Fc MHz	-	446	-
Insertion loss (Fc +/- 4MHz) IL (dB)	-	2.3	4.5
Amplitude ripple (Fc +/- 4MHz) (dB)	-	0.3	2.5
Attenuation (Reference level from 0 dB)			
Fc-100 ~ Fc-40.8 MHz (dB)	43	50	-
Fc+40 ~ Fc+100 MHz (dB)	38	44	-
Source impedance Z _s (Ω)	-	50	-
Load impedance Z _L (Ω)	-	50	-

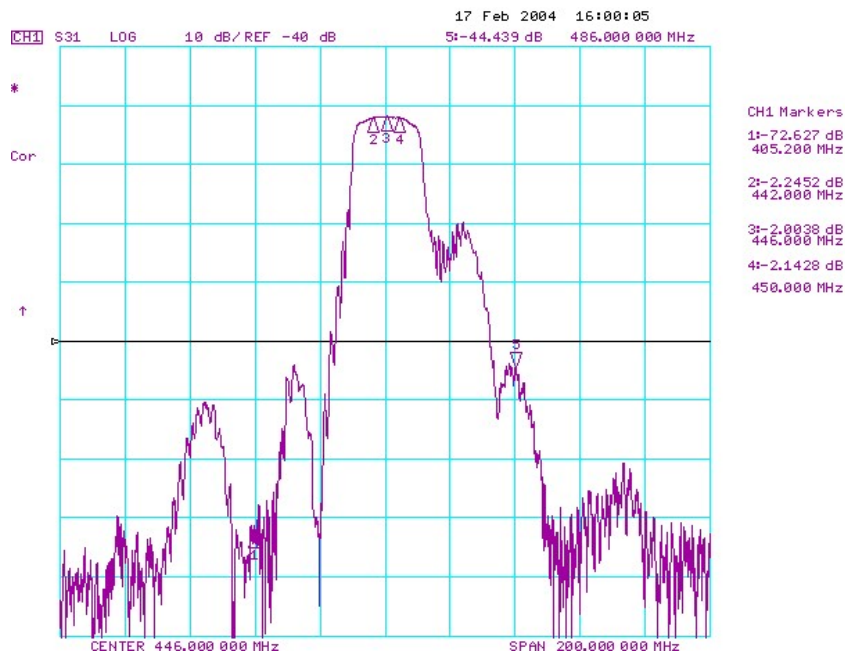
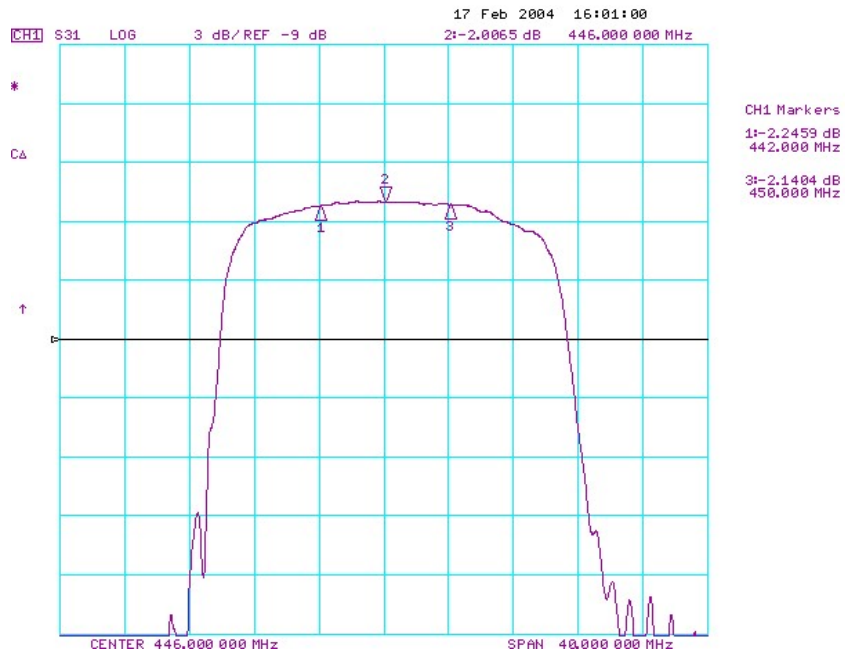
Note1. No matching network required for operation at 50 Ω

C. MEASUREMENT CIRCUIT:

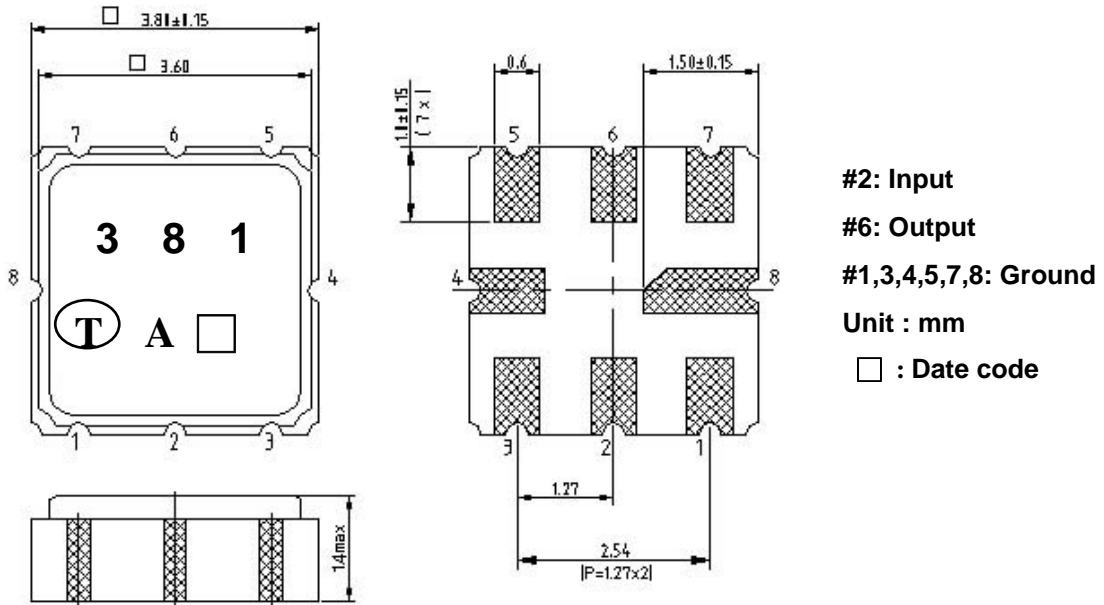
HP Network analyzer



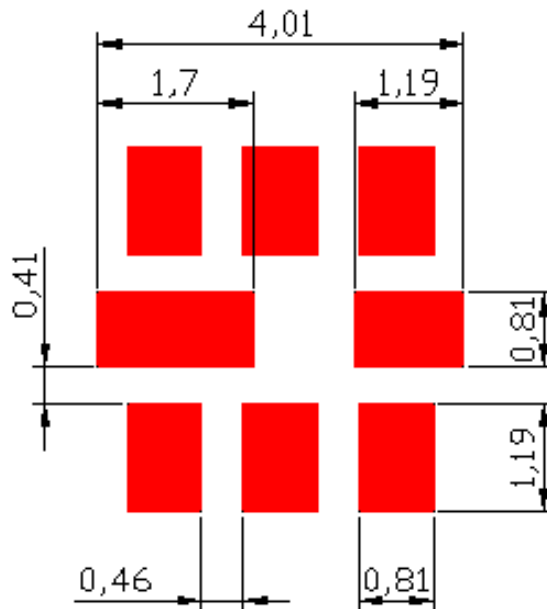
D. Frequency Characteristics :



E. OUTLINE DRAWING:



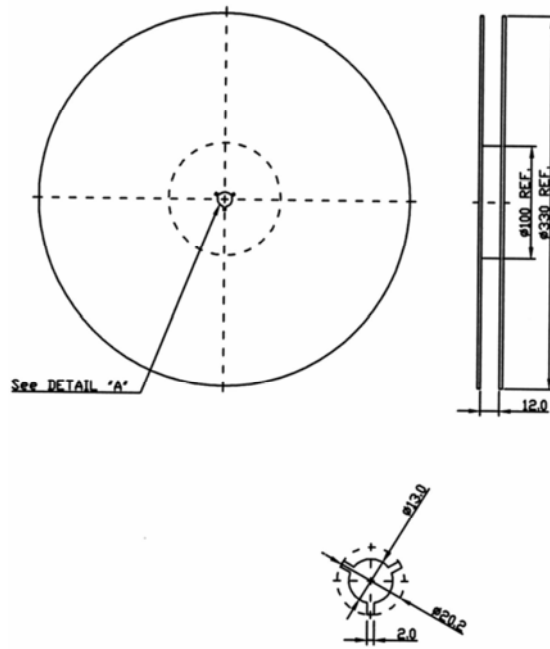
F. PCB FOOTPRINT:



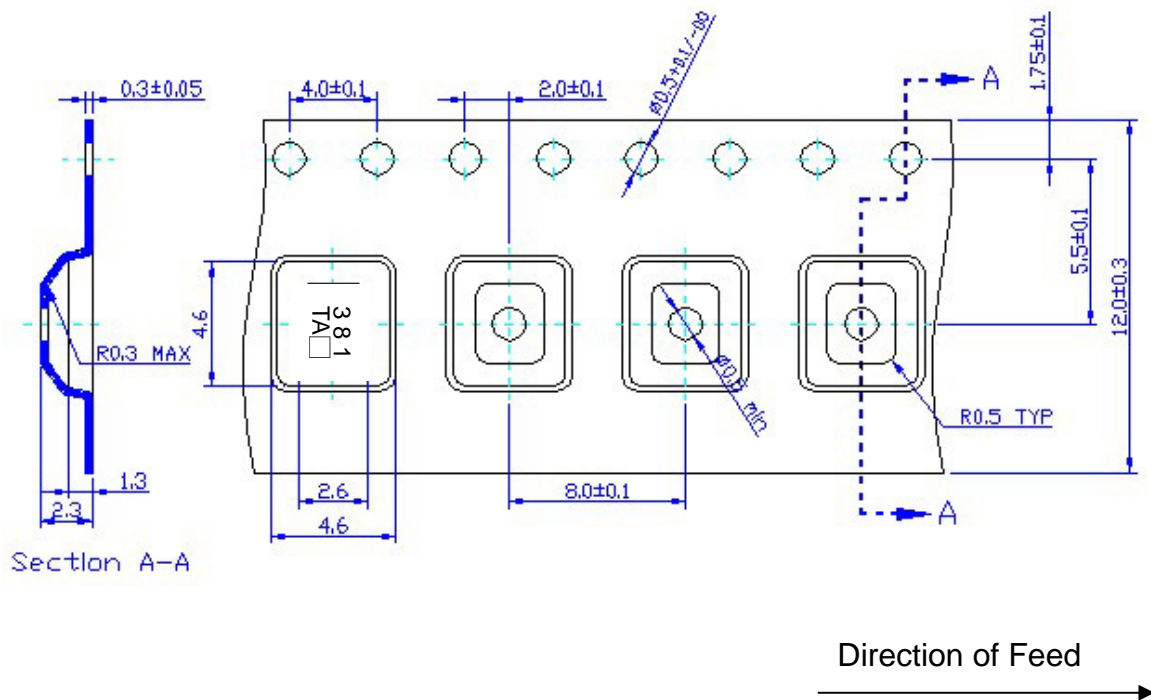
G. PACKING:

1. REEL DIMENSION

(Reel Count : 7"=1000 ; 13"=3000)



2. TAPE DIMENSION



H. RECOMMENDED REFLOW PROFILE :

1. Preheating shall be fixed at 150~180°C for 60~90 seconds.
2. Ascending time to preheating temperature 150°C shall be 30 seconds min.
3. Heating shall be fixed at 220°C for 50~80 seconds and at 245~260°C peak (min. 10sec).
4. Time : 2 times.

