

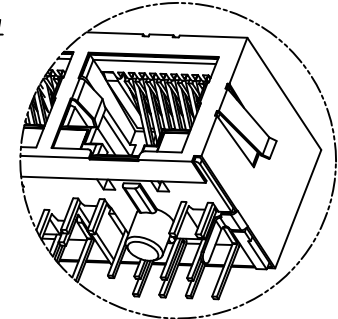
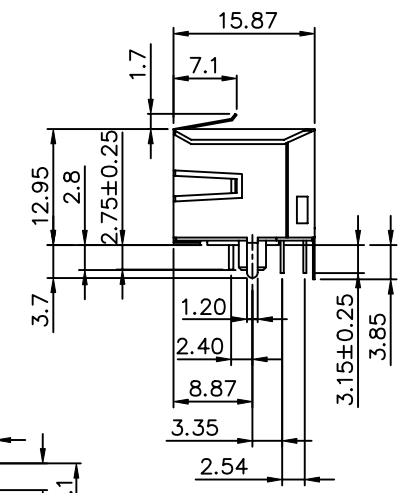
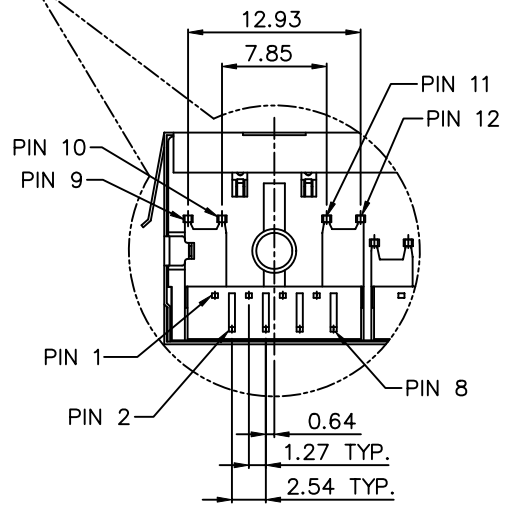
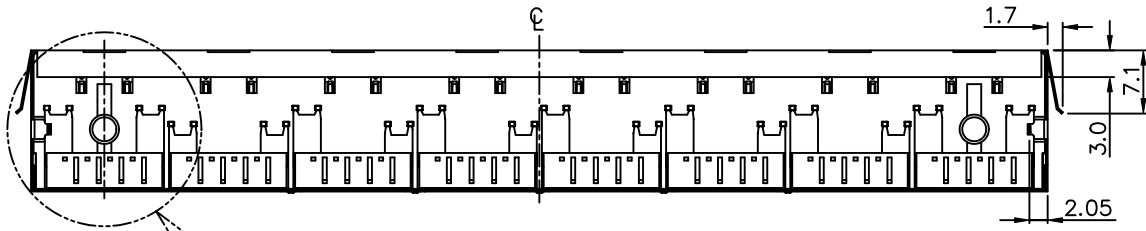
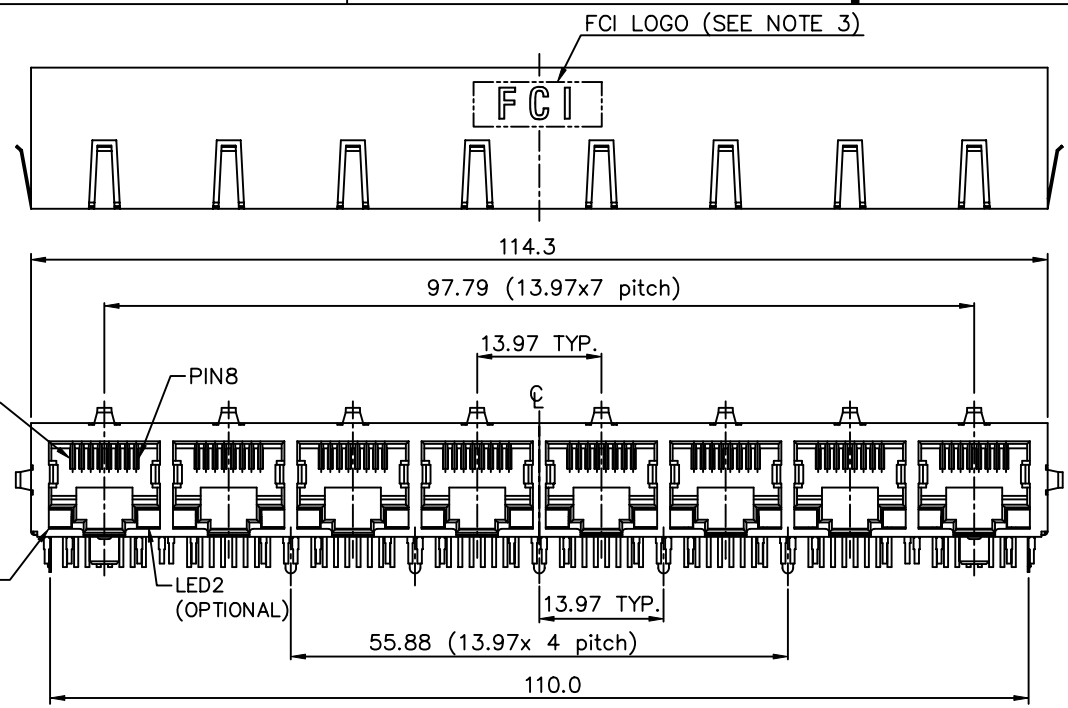
Tous droits strictement reserves. Reproduction ou communication a des tiers interdite sous quelque forme que ce soit sans autorisation écrite du propriétaire. Propriete de c FCI. Droits de reproduction FCI.



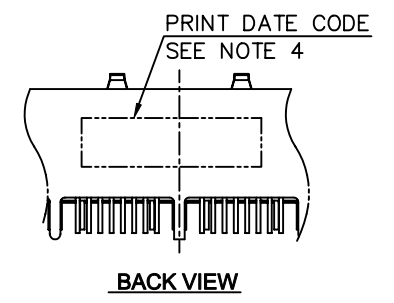
All rights strictly reserved. Reproduction or issue to third parties in any form whatever is not permitted without written authority from the proprietor. Property of Fci. Copyright FCI.

A

B



PARTIAL VIEW

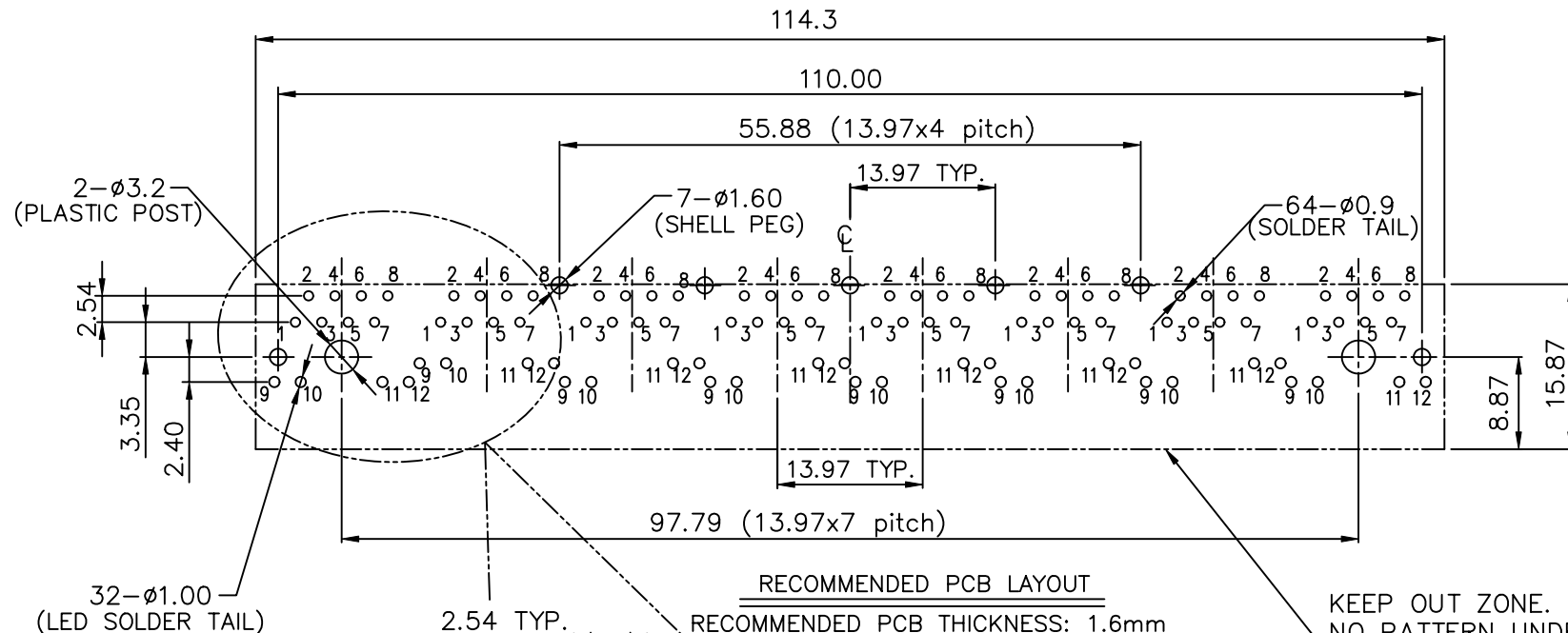


BACK VIEW

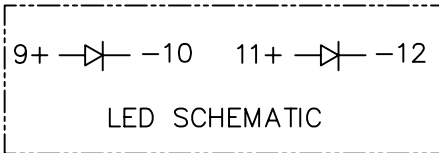
mat'l. code				tolerances unless otherwise specified				CUSTOMER COPY		FCI www.fciconnect.com						
ltr	ecn no	dr	date	linear	.X ±0.25				projection 	title RJ 1x8 TAB DOWN WITH LED & EMI WITHOUT TRANSFORMER						
A	T10-0122	WL	08/02/10		.XX ±0.20											
B	T10-0125	WL	08/05/10		.XXX ±0.15											
				angles						product family size dwg no A4 10113616		code TWN sheet 1 of 3				
				dr	WENDY CHEN	02/25/10										
				enrg	WENDY CHEN	02/25/10										
				chr	GARY HSIEH	02/25/10										
				appd	JOSEPH HSIA	02/25/10										
sheet index	revision sheet	B 1	B 2	B 3												

A

B



RECOMMENDED PCB LAYOUT
RECOMMENDED PCB THICKNESS: 1.6mm
TOLERANCE: ±0.05 (TOP VIEW)



mat'l. code				tolerances unless otherwise specified		CUSTOMER COPY		FCI	
ltr	ecn no	dr	date	linear	.X ±0.25	projection	MM	www.fciconnect.com	
B					.XX ±0.20			title	
					.XXX ±0.15			RJ 1x8 TAB DOWN WITH LED & EMI WITHOUT TRANSFORMER	
				angles		scale	A4	product family	
				dr	WENDY CHEN 02/25/10			size	
				enr	WENDY CHEN 02/25/10			dwg no	
				chr	GARY HSIEH 02/25/10	scale	A4	10113616	
				appd	JOSEPH HSIA 02/25/10			sheet 2 of	
sheet index	revision sheet							code	
								22526	

Tous droits strictement reserves. Reproduction ou communication a des tiers
interdite sous quelque forme que ce soit sans autorisation écrite du propriétaire.
Propriete de c FCI. Droits de reproduction FCI.

All rights strictly reserved. Reproduction or issue to third parties in any
form whatever is not permitted without written authority from the proprietor.
Property of Fci. Copyright FCI.



NOTE:

1. MATERIAL:
HOUSING: THERMOPLASTIC HIGH TEMPERATURE,
UL 94V-0, COLOR-BLACK.
INSERT HOUSING: THERMOPLASTIC HIGH TEMPERATURE,
UL 94V-0, COLOR-BLACK.
CONTACTS: COPPER ALLOY.
LED: STEEL.
SHIELD: COPPER ALLOY.
2. FINISH:
CONTACTS: 50u" MIN. NICKEL UNDER PLATED OVER ALL.
SELECTIVE GOLD PLATED ON CONTACT AREA,
1u" GOLD PLATED ON SOLDER TAIL.
LED SOLDER TAIL: 100u" MIN. MATTE TIN OVER
50u" NICKEL UNDER PLATED.
SHELL: 20u" MIN. NICKEL OVER ALL.
3. "FCI" LOGO IS STAMPED ON THE SHIELD.
4. "DATE CODE" DESCRIPTION:
XX XX
WEEK
YEAR (EX. : 10--2010)
5. PART NUMBER DESCRIPTION:
10113616-X X X X LF
LEAD FREE
OPTIONAL GROUND SPRING
0 : WITHOUT
1 : WITH
LED COLOR
0 : WITHOUT LED
1 : LED1: GREEN / LED2:YELLOW
2 : LED1: YELLOW / LED2:GREEN
3 : LED1: GREEN / LED2:GREEN
CONTACT AREA PLATING
1 : 15u" GOLD PLATING
2 : 30u" GOLD PLATING
3 : 50u" GOLD PLATING
4 : 6u" GOLD PLATING
5 : 1u" GOLD FLASH PLATING
ELECTRICAL CIRCUIT
01: SEE FIGURE 1

6. PRODUCT PERFORMANCE PER SPEC. : GS-12-659.
7. PACKING SPEC. : GS-14-1503.
8. THIS PRODUCT MEETS THE EUROPEAN UNION DIRECTIVE AS DESCRIBED
IN GS-22-008.
9. THE HOUSING WILL WITHSTAND EXPOSURE TO 265°C PEAK TEMPERATURE
FOR 5 SECONDS IN A WAVE SOLDER APPLICATION WITH A CIRCUIT BOARD.

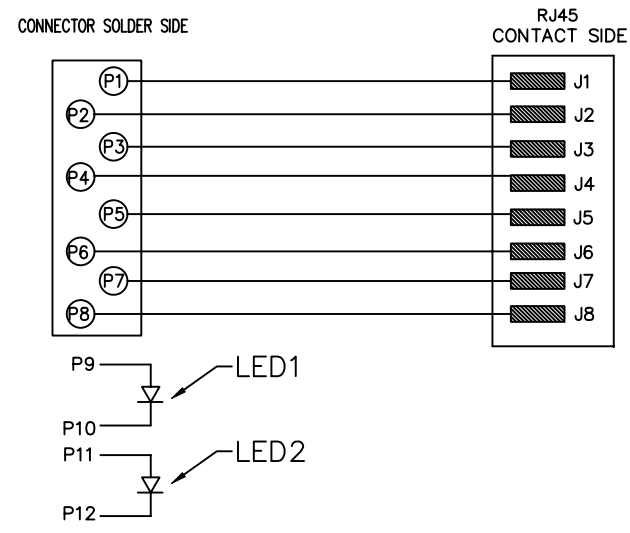


FIGURE 1

mat'l. code				tolerances unless otherwise specified			CUSTOMER COPY		FCI	
ltr	ecn no	dr	date		.X	±0.25				www.fciconnect.com
B				linear	.XX	±0.20		projection	title	
				angles	.XXX	±0.15			RJ 1x8 TAB DOWN WITH LED & EMI WITHOUT TRANSFORMER	
				dr	WENDY CHEN	02/25/10		MM	product family	code
				enrg	WENDY CHEN	02/25/10			size	TWN
				chr	GARY HSIEH	02/25/10		scale	dwg no	sheet
				appd	JOSEPH HSIA	02/25/10			10113616	3 of
sheet index	revision sheet									