

## REVISION T

DO NOT  
SCALE FROM  
THIS PRINT

QFS-XXX-XX-XX-D-DP-RA-XXX-XX

No OF POSITIONS—  
-016, -032, -048, -064  
(PER ROW)

LEAD STYLE  
-01  
-02

PACKAGING OPTION  
-TR: TAPE & REEL PACKAGING  
(-016 & -032 WITH NO OPTIONS)  
(-016 & -032 WITH -PC4)  
(-016 WITH -PC8)

OPTION  
-K: KAPTON PAD  
(USE K-DOT-.310-.406-.005)  
-PC4: 4 POWER PINS  
(NOT AVAILABLE WITH  
-064 POSITION)  
-PC8: 8 POWER PINS  
(NOT AVAILABLE WITH  
-064 POSITION)

-RA: RIGHT ANGLE

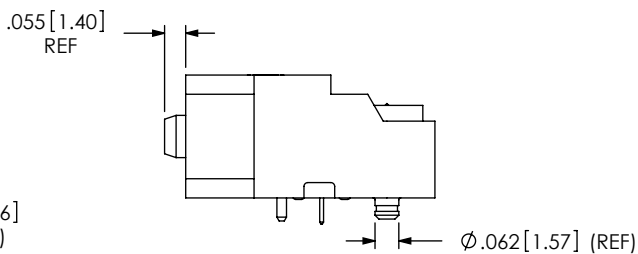
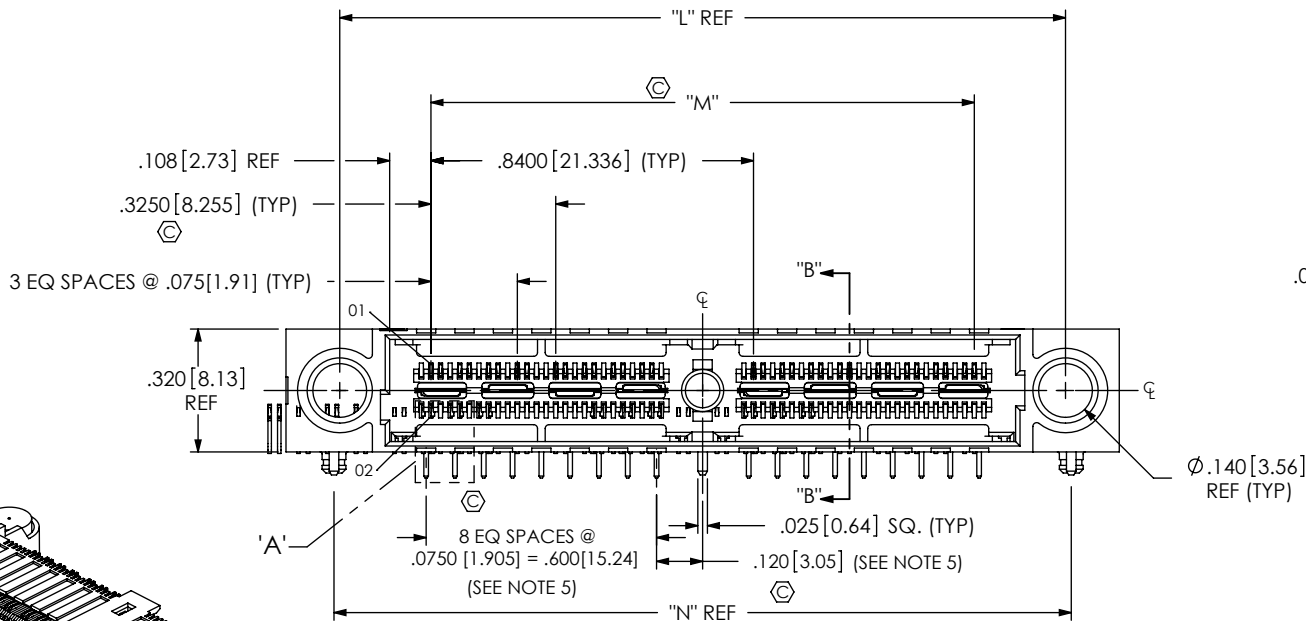
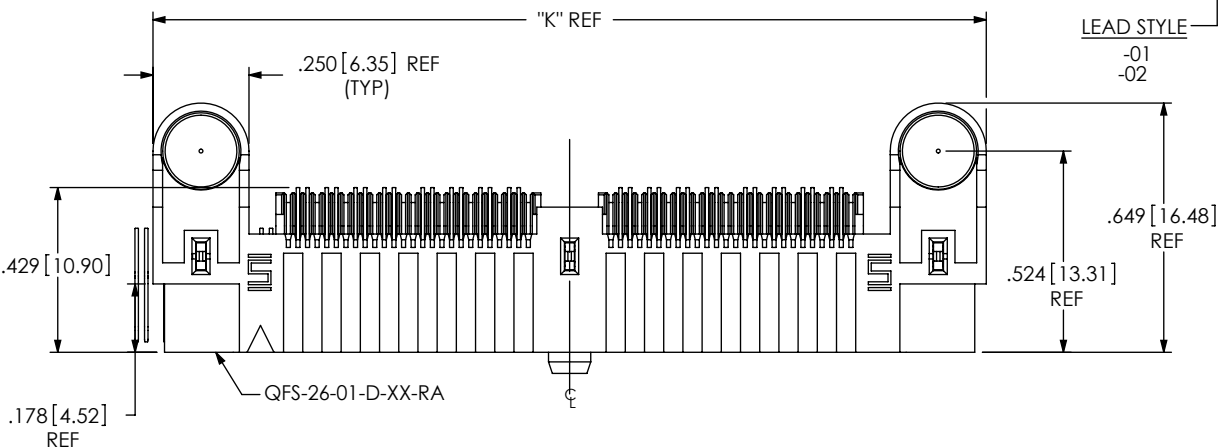
-DP: DIFFERENTIAL PAIRS

ROW SPECIFICATION


-D: DOUBLE (USE QFS-26-01-D-XX-RA)

PLATING SPECIFICATION  
(SEE TABLE 7, SHEET 4)

-SL: 10µ" GOLD IN CONTACT AREA, MATTE TIN TAIL  
-S: 30µ" GOLD IN CONTACT AREA, MATTE TIN TAIL  
-L: 10µ" GOLD IN CONTACT AREA, 3µ" GOLD ON TAIL  
-H: 30µ" GOLD IN CONTACT AREA, 3µ" GOLD ON TAIL



NOTES:

1.  REPRESENTS A CRITICAL DIMENSION.
2. BURR ALLOWANCE: .0010[0.02] MAX.
3. MINIMUM PUSHOUT FORCE: SIGNAL: .5 LB [2.22 N],  
GROUND AND COUNTERWEIGHT: 1 LB [4.45 N].
4. PARTS TO BE PACKAGED IN TRAYS AS STANDARD.
5. DOES NOT APPLY TO 1 BANK.

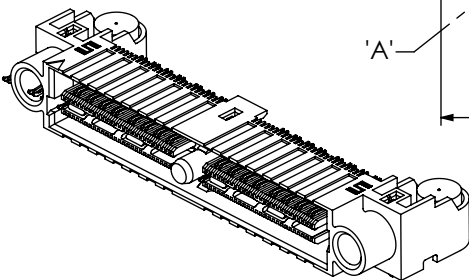


FIG 1  
(QFS-032-01-XX-D-DP-RA SHOWN)

TABLE 5

No OF POS	"K"	"L"	"M"	"N"
-16	1.330 [33.78]	1.050 [26.67]	0.575 [14.61]	1.080 [27.43]
-32	2.170 [55.12]	1.890 [48.01]	1.415 [35.94]	1.920 [48.77]
-48	3.010 [76.45]	2.730 [69.34]	2.255 [57.28]	2.760 [70.10]
-64	3.850 [97.79]	3.570 [90.68]	3.095 [78.61]	3.600 [91.44]

UNLESS OTHERWISE SPECIFIED,  
DIMENSIONS ARE IN INCHES.

TOLERANCES ARE:

DECIMALS	ANGLES
.XX: $\pm .01$ [.3]	2°
.XXX: $\pm .005$ [.13]	
.XXXX: $\pm .0020$ [.051]	

PROPRIETARY NOTE

THIS DOCUMENT CONTAINS INFORMATION  
CONFIDENTIAL AND PROPRIETARY TO  
SAMTEC, INC. AND SHALL NOT BE REPRODUCED  
OR TRANSFERRED TO OTHER DOCUMENTS OR  
DISCLOSED TO OTHERS OR USED FOR ANY  
PURPOSE OTHER THAN THAT WHICH IT WAS  
OBTAINED WITHOUT THE EXPRESSED WRITTEN  
CONSENT OF SAMTEC, INC.

**MATERIAL:** DO NOT SCALE DRAWING  
INSULATOR: LCP, UL94V-0, COLOR BLACK  
CONTACT & GROUND PLANE:  
PHOS BRONZE  
COUNTERWEIGHT: BRASS

SHEET SCALE: 2:1

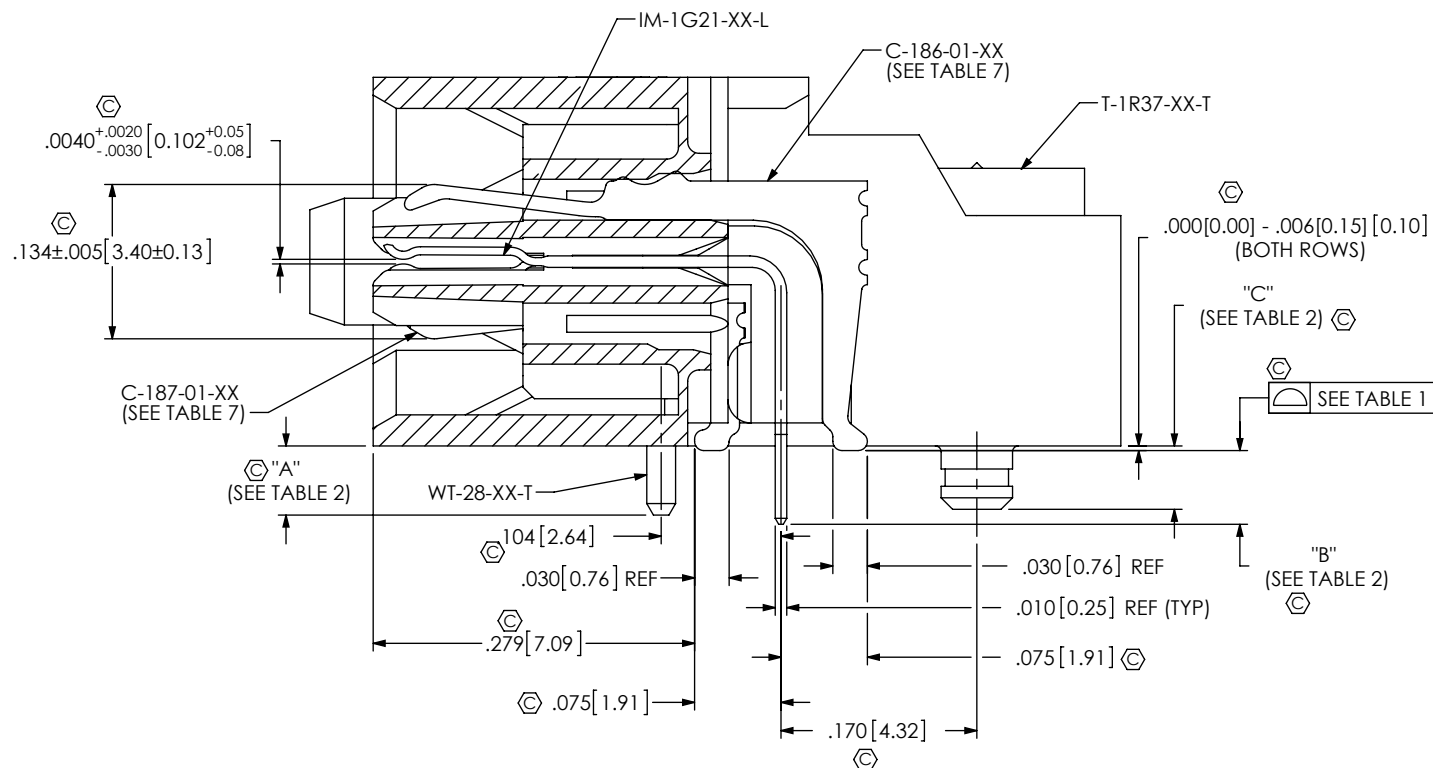
DESCRIPTION:

### .635mm RA DIFFERENTIAL PAIRS SOCKET ASSEMBLY

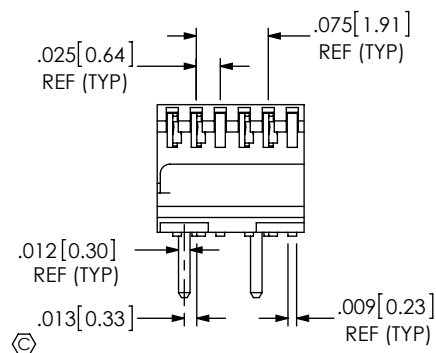
DWG. NO.

QFS-XXX-XX-XX-D-DP-RA-XXX-XX

BY: BRATCHER 01/02/2007	SHEET 1 OF 4
-------------------------	--------------



SECTION "B"-"B"



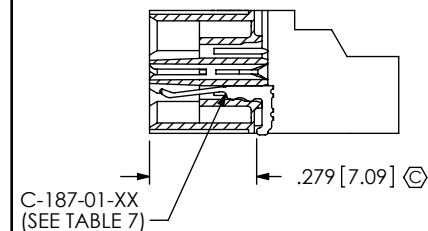
DETAIL 'A'  
SCALE 5:1

TABLE 1

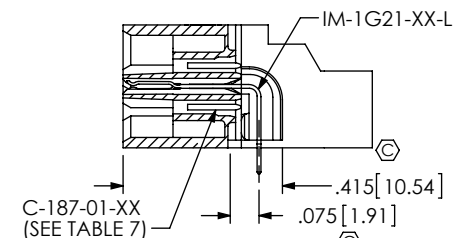
No OF POSITIONS	COPLANARITY
-016 & -032	.004[0.10]
-048 & -064	.006[0.15]

TABLE 2

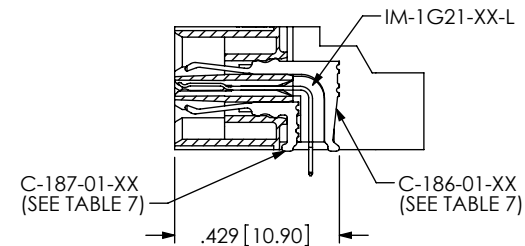
LEAD STYLE	"A"	"B"	"C"	WT-28-XX-T
-01	.060[1.52]	.064[1.63]	.055[1.40]	WT-28-01-T
-02	.091[2.31]	.095[2.41]	.086[2.18]	WT-28-02-T



IN-PROCESS 1



IN-PROCESS 2



IN-PROCESS 3

PROPRIETARY NOTE

THIS DOCUMENT CONTAINS INFORMATION CONFIDENTIAL AND PROPRIETARY TO SAMTEC, INC. AND SHALL NOT BE REPRODUCED OR TRANSFERRED TO OTHER DOCUMENTS OR DISCLOSED TO OTHERS OR USED FOR ANY PURPOSE OTHER THAN THAT WHICH IT WAS OBTAINED WITHOUT THE EXPRESSED WRITTEN CONSENT OF SAMTEC, INC.

DO NOT SCALE DRAWING

SHEET SCALE: 6:1

**samtec**

520 PARK EAST BLVD, NEW ALBANY, IN 47150  
PHONE: 812-944-6733 FAX: 812-948-5047  
e-Mail: info@SAMTEC.com code 55322

DESCRIPTION:

.635mm RA DIFFERENTIAL PAIRS SOCKET ASSEMBLY

DWG. NO.

QFS-XXX-XX-XX-D-DP-RA-XXX-XX

BY: BRATCHER 01/02/2007

SHEET 2 OF 4

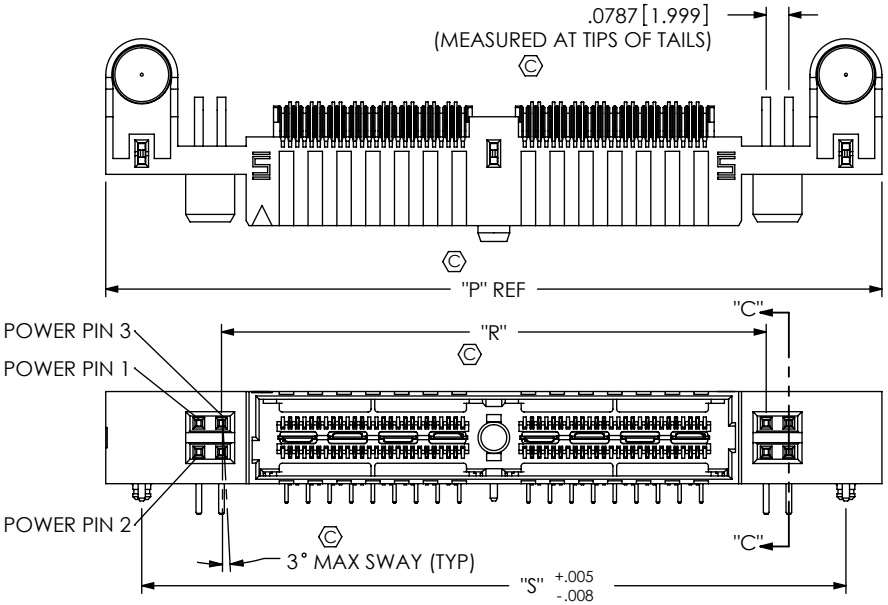


FIG 2  
(QFS-032-01-XX-D-DP-RA-PC4 SHOWN)  
(SAME AS FIG 1, DIFFERENT AS SHOWN)

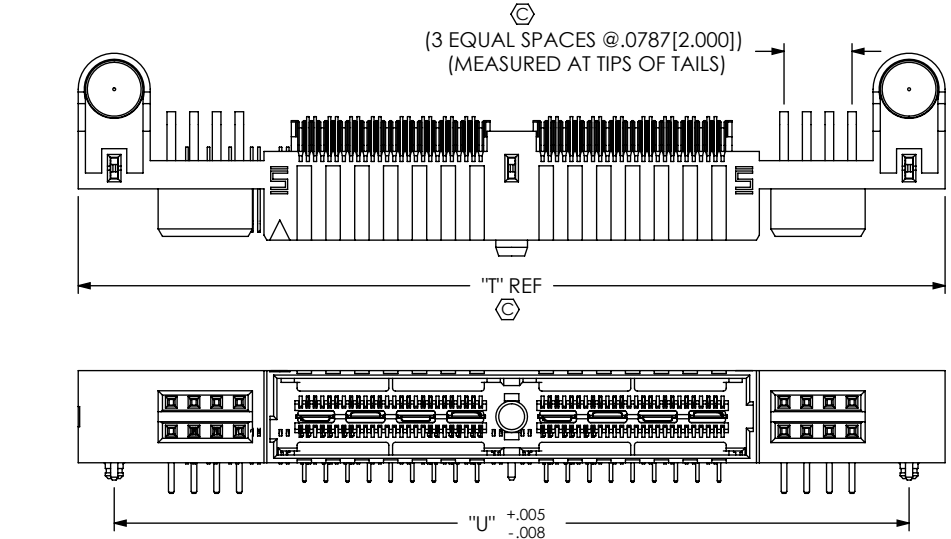


TABLE 6					
No OF POS	"P"	"R"	"S"	"T"	"U"
-16	1.855 [47.12]	1.051 [26.70]	1.605 [40.77]	2.170 [55.12]	1.920 [48.77]
-32	2.695 [68.45]	1.891 [48.03]	2.445 [62.10]	3.010 [76.45]	2.760 [70.10]
-48	3.535 [89.79]	2.731 [69.37]	3.285 [83.44]	3.850 [97.79]	3.600 [91.44]
-64	4.375 [111.13]	3.571 [90.70]	4.125 [104.78]	4.690 [119.13]	4.440 [112.78]

TABLE 3							
LEAD STYLE	CONTACT 1	CONTACT 2	"D"	"E"	"F"	"G"	"H"
-01	C-79-28-XX	C-79-29-XX	.261[6.63]	.484[12.29]	.461[11.71]	.684[17.37]	.106[2.69]
-02	C-79-20-XX	C-79-20A-XX	.287[7.29]	.510[12.95]	.487[12.37]	.710[18.03]	.132[3.35]

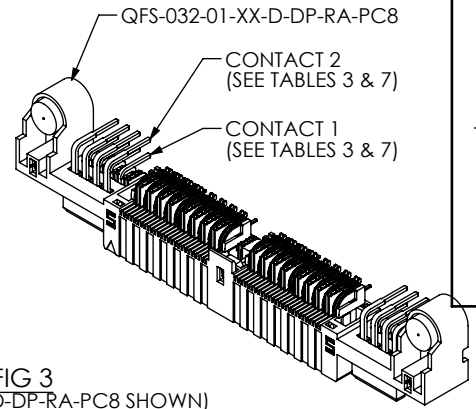
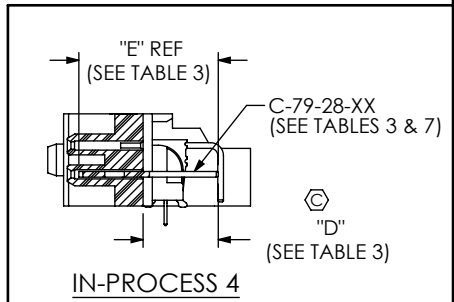
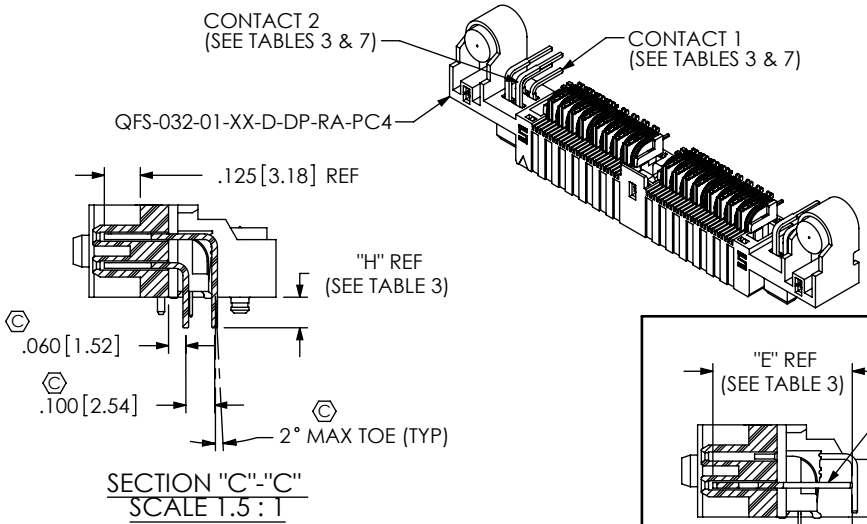
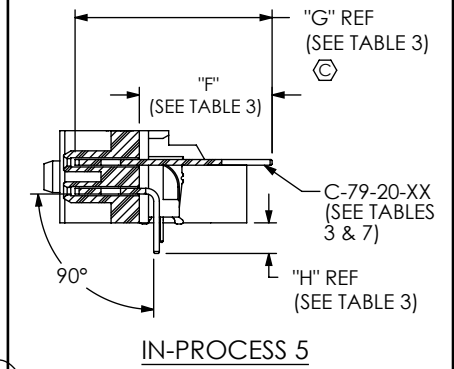


FIG 3  
(QFS-032-01-XX-D-DP-RA-PC8 SHOWN)  
(SAME AS FIG 1, DIFFERENT AS SHOWN)



PROPRIETARY NOTE  
THIS DOCUMENT CONTAINS INFORMATION  
CONFIDENTIAL AND PROPRIETARY TO  
SAMTEC, INC. AND SHALL NOT BE REPRODUCED  
OR TRANSFERRED TO OTHER DOCUMENTS OR  
DISCLOSED TO OTHERS OR USED FOR ANY  
PURPOSE OTHER THAN THAT WHICH IT WAS  
OBTAINED WITHOUT THE EXPRESSED WRITTEN  
CONSENT OF SAMTEC, INC.

DO NOT SCALE DRAWING

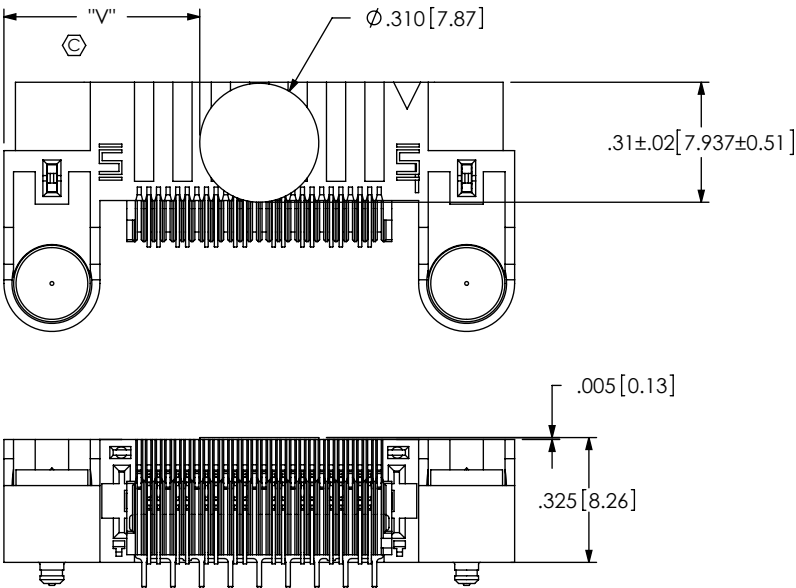
SHEET SCALE: 1:1

520 PARK EAST BLVD, NEW ALBANY, IN 47150  
PHONE: 812-944-6733 FAX: 812-948-5047  
e-Mail info@SAMTEC.com code 55322

DESCRIPTION:  
.635mm RA DIFFERENTIAL PAIRS SOCKET ASSEMBLY

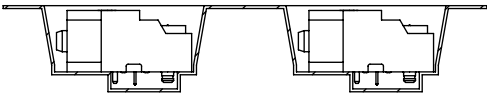
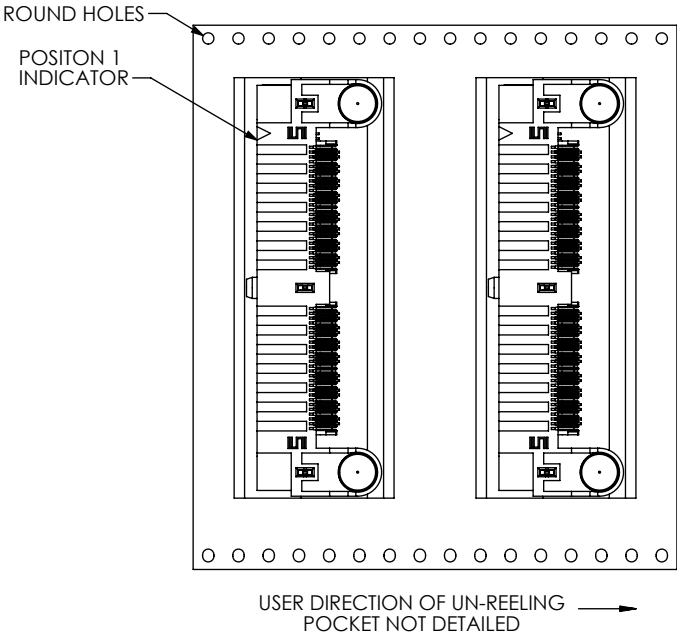
DWG. NO.  
QFS-XXX-XX-XX-D-DP-RA-XXX-XX

BY: BRATCHER 01/02/2007 SHEET 3 OF 4



-K: KAPTON PAD  
QFS-016-01-XX-D-DP-RA-K SHOWN

TABLE 4			
No OF POS	"V" - NO OPTION	"V" - PC 4 OPTION	"V" - PC 8 OPTION
-16	0.511 [12.98]	0.773 [19.63]	0.931 [23.65]
-32	0.931 [23.65]	1.193 [30.30]	1.351 [34.32]
-48	1.351 [34.32]	1.613 [40.97]	1.771 [44.98]
-64	1.771 [44.98]	N/A	N/A



PACKAGING VIEW  
-TR: TAPE & REEL OPTION  
(QFS-032-01-XX-D-DP-RA-TR SHOWN)

TABLE 7: PLATING SPECIFICATIONS			
	BOTTOM ROW CONTACT	TOP ROW CONTACT	-PCX OPTION CONTACT
-SL	C-186-01-SL	C-187-01-SL	C-79-XX-L: 10μ" GOLD CONTACT, MATTE TIN TAIL
-S	C-186-01-S	C-187-01-S	C-79-XX-S: 30μ" GOLD CONTACT, MATTE TIN TAIL
-L	C-186-01-L	C-187-01-L	C-79-XX-L: 10μ" GOLD CONTACT, MATTE TIN TAIL
-H	C-186-01-H	C-187-01-H	C-79-XX-H: 50μ" GOLD CONTACT, 3μ" LIGHT GOLD TAIL

PROPRIETARY NOTE  
THIS DOCUMENT CONTAINS INFORMATION  
CONFIDENTIAL AND PROPRIETARY TO  
SAMTEC, INC. AND SHALL NOT BE REPRODUCED  
OR TRANSFERRED TO OTHER DOCUMENTS OR  
DISCLOSED TO OTHERS OR USED FOR ANY  
PURPOSE OTHER THAN THAT WHICH IT WAS  
OBTAINED WITHOUT THE EXPRESSED WRITTEN  
CONSENT OF SAMTEC, INC.

DO NOT SCALE DRAWING

SHEET SCALE: 2:1



520 PARK EAST BLVD, NEW ALBANY, IN 47150  
PHONE: 812-944-6733 FAX: 812-948-5047  
e-Mail info@SAMTEC.com code 55322

DESCRIPTION:  
.635mm RA DIFFERENTIAL PAIRS SOCKET ASSEMBLY

DWG. NO.  
QFS-XXX-XX-XX-D-DP-RA-XXX-XX

BY: BRATCHER 01/02/2007 SHEET 4 OF 4