

1596900

<https://www.phoenixcontact.com/us/products/1596900>

Please be informed that the data shown in this PDF document is generated from our online catalog. Please find the complete data in the user documentation. Our general terms of use for downloads are valid.



M23, Device connector front mounting, series: RC, straight, shielded: yes, Screw locking mechanism, No. of pos.: 12, Direction of rotation: Standard, contact connection type: Pin, Solder cup, Flat gasket, 4x Ø 2.7 mm, flange dimensions: 25 mm x 25 mm, Panel thickness min.: 1 mm, coding: N, Alternative product in accordance with RoHS II without Exemption 6c (Pb < 0.1 %) item no.: 1240752

Commercial data

Item number	1596900
Packing unit	40 pc
Minimum order quantity	1 pc
Sales key	AB31
Product key	ABRAFL
GTIN	4046356213233
Weight per piece (including packing)	33.04 g
Weight per piece (excluding packing)	33.04 g
Customs tariff number	85366990
Country of origin	DE

RC-12P1N122200 - Device connector front mounting



1596900

<https://www.phoenixcontact.com/us/products/1596900>

Technical data

Product properties

Product type	Circular connectors (device side)
Data management status	
Article revision	04

Connector

Insulating body	
Coding	N
Insertion/withdrawal cycles	100
Connection method	Solder cup
Contact switching type	Pin
Application	Signal
Number of positions	12
Direction of rotation	Standard
Connection profile	12
Contact diameter	1 mm
Power contacts	
Litz wire cross-section Power contacts min.	0.08 mm²
Litz wire cross-section Power contacts max.	1 mm²
Rated current Power contacts	8 A
Rated voltage	48 V AC
	74 V DC
Rated surge voltage	1.5 kV
Overvoltage category	III
Degree of pollution	3

Housing

Housing material	Metal
Flange dimensions	25 mm x 25 mm
Type of locking	Screw locking mechanism
Pg screw connection	none
Degree of protection (plugged in)	IP67
Thread type	M23

RC-12P1N122200 - Device connector front mounting

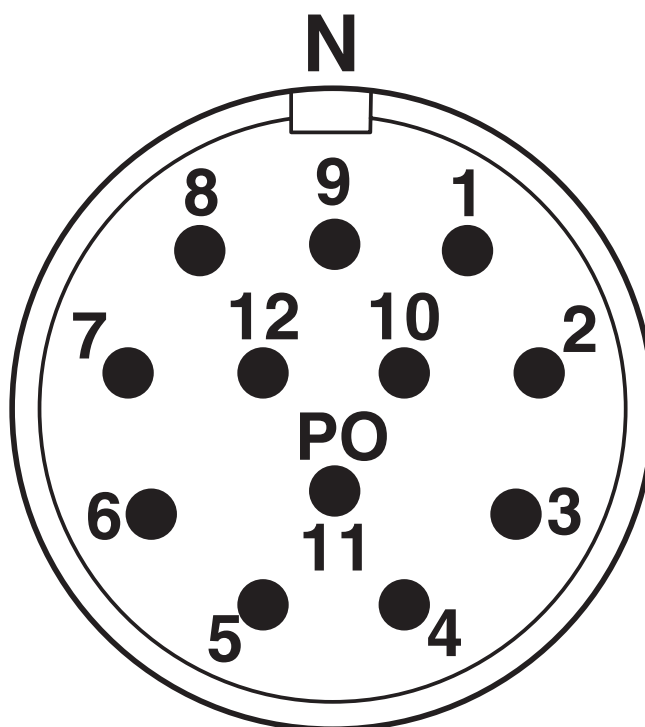
1596900

<https://www.phoenixcontact.com/us/products/1596900>



Drawings

Schematic diagram

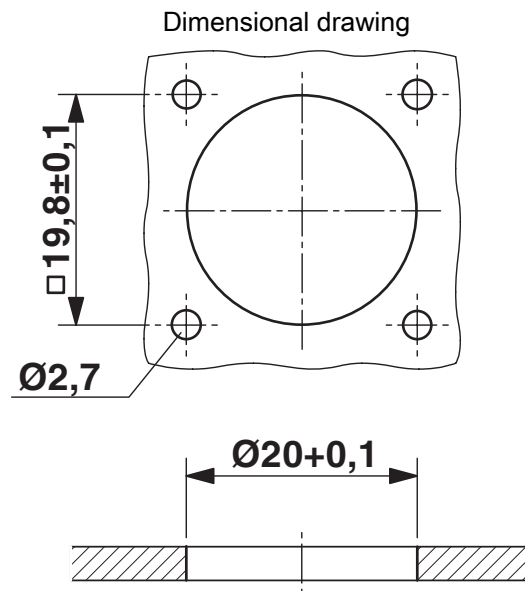


Connector pin assignment

RC-12P1N122200 - Device connector front mounting

1596900

<https://www.phoenixcontact.com/us/products/1596900>



Installation dimensions

RC-12P1N122200 - Device connector front mounting



1596900

<https://www.phoenixcontact.com/us/products/1596900>

Classifications

ECLASS

ECLASS-11.0	27440102
ECLASS-12.0	27440116
ECLASS-13.0	27440116

ETIM

ETIM 9.0	EC002635
----------	----------

UNSPSC

UNSPSC 21.0	39121400
-------------	----------

RC-12P1N122200 - Device connector front mounting



1596900
<https://www.phoenixcontact.com/us/products/1596900>

Environmental product compliance

EU RoHS	
Fulfills EU RoHS substance requirements	Yes
Exemption	6(c)

China RoHS	
Environment friendly use period (EFUP)	EFUP-50
	An article-related China RoHS declaration table can be found in the download area for the respective article under "Manufacturer declaration". For all articles with EFUP-E, no China RoHS declaration table issued and required.

EU REACH SVHC	
REACH candidate substance (CAS No.)	Lead(CAS: 7439-92-1)
SCIP	daafdace-88e2-4191-a69d-3b6b82042e37

Phoenix Contact 2024 © - all rights reserved
<https://www.phoenixcontact.com>

Phoenix Contact USA
586 Fulling Mill Road
Middletown, PA 17057, United States
(+717) 944-1300
info@phoenixcon.com