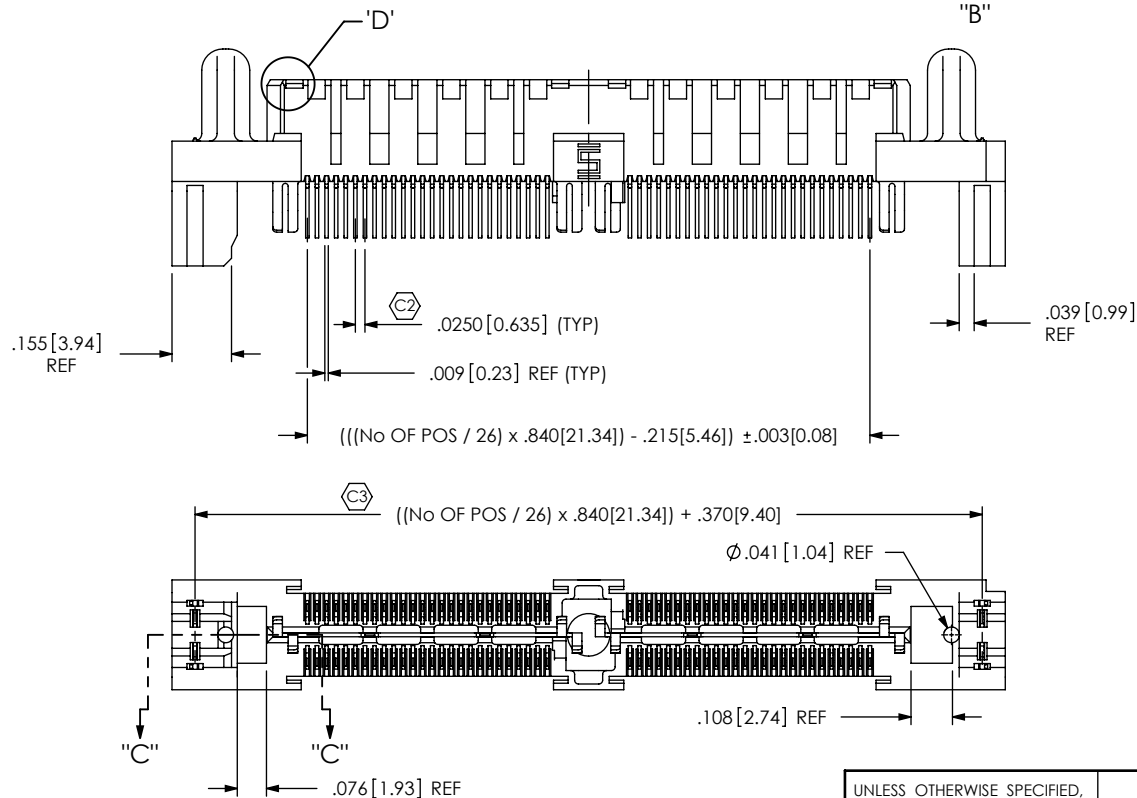
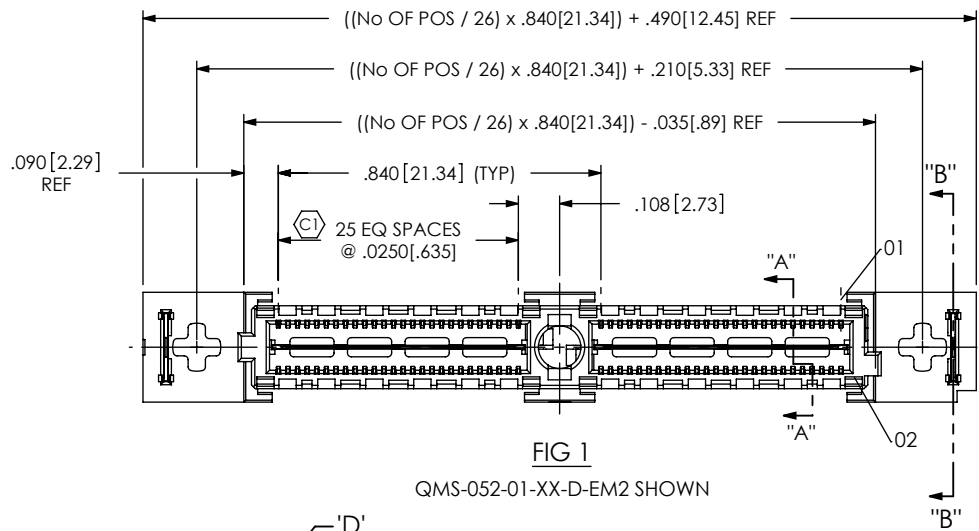


DO NOT
SCALE FROM
THIS PRINT



QMS-XXX-XX-XX-D-EM2-XXX-XX

No OF POSITIONS

-026, -052, -078,
-104, * -130
(PER ROW)

LEAD STYLE

-01

PLATING SPECIFICATION

-S: 30μ" SELECTIVE GOLD IN
CONTACT AREA, MATTE TIN ON TAIL
-SL: 10μ" SELECTIVE LIGHT GOLD IN
CONTACT AREA, MATTE TIN ON TAIL
-H: 30μ" HEAVY GOLD IN CONTACT AREA,
3μ" ON TAIL
-L: 10μ" LIGHT GOLD IN CONTACT AREA,
3μ" GOLD ON TAIL

PACKAGING OPTION

-TR: TAPE AND REEL PACKAGING
(-026 & -052 WITH NO OPTIONS
(-026 & -052 WITH -PC4)
(-026 WITH -PC8)

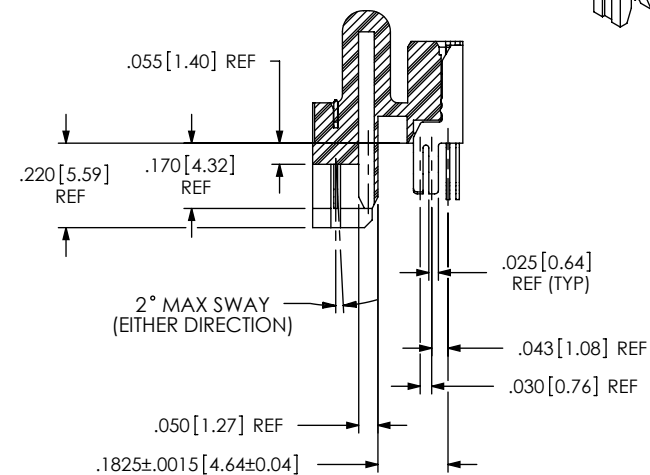
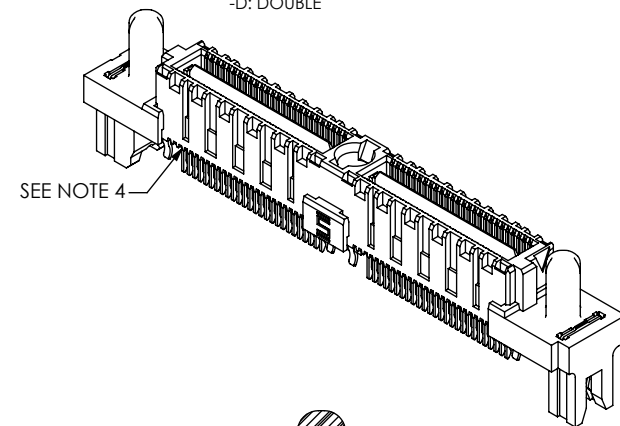
POWER COMBO OPTION

-PC4: 4 POWER POS PER END
-PC8: 8 POWER POS PER END
(SEE FIG. 2, SHEET 3)
[-PCX AVAILABLE ON POSITIONS
-026, -052 & -078 ONLY]

-EM2: EDGE MOUNT

ROW SPECIFICATION

-D: DOUBLE



NOTES:

1. Ⓢ REPRESENTS A CRITICAL DIMENSION.
2. MAXIMUM BURR ALLOWANCE: .0015[0.038].
3. MINIMUM PUSHOUT FORCE: SIGNAL: .5 LB,
GROUND: 1 LB.
4. TERMINALS IN ALL POSITIONS TO BE
SHEARED.
5. MAXIMUM VARIANCE OF .002[0.05].
6. DIMENSION APPLIES TO GROUND PLANE &
SIGNAL PINS.
7. PARTS TO BE PACKAGED IN TRAYS AS STANDARD

UNLESS OTHERWISE SPECIFIED,
DIMENSIONS ARE IN INCHES.

TOLERANCES ARE:

DECIMALS ANGLES
.XX: ±.01 [.3] 2°
.XXX: ±.005 [.13]
.XXXX: ±.0020 [.051]

PROPRIETARY NOTE

THIS DOCUMENT CONTAINS INFORMATION
CONFIDENTIAL AND PROPRIETARY TO
SAMTEC, INC. AND SHALL NOT BE REPRODUCED
OR TRANSFERRED TO OTHER DOCUMENTS OR
DISCLOSED TO OTHERS OR USED FOR ANY
PURPOSE OTHER THAN THAT WHICH IT WAS
OBTAINED WITHOUT THE EXPRESSED WRITTEN
CONSENT OF SAMTEC, INC.

MATERIAL: DO NOT SCALE DRAWING
INSULATOR: LCP, UL 94 VO
COLOR: BLACK
TERMINAL & GROUND PLANE:
PHOS BRONZE

SHEET SCALE: 2:1

DESCRIPTION:

.635mm DOUBLE ROW EDGE MOUNT TERMINAL STRIP

DWG. NO.

QMS-XXX-XX-XX-D-EM2-XXX-XX

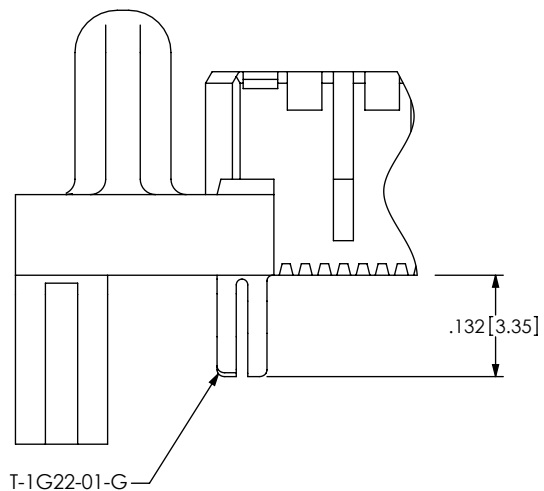
BY: E.L.S.

6/18/2003

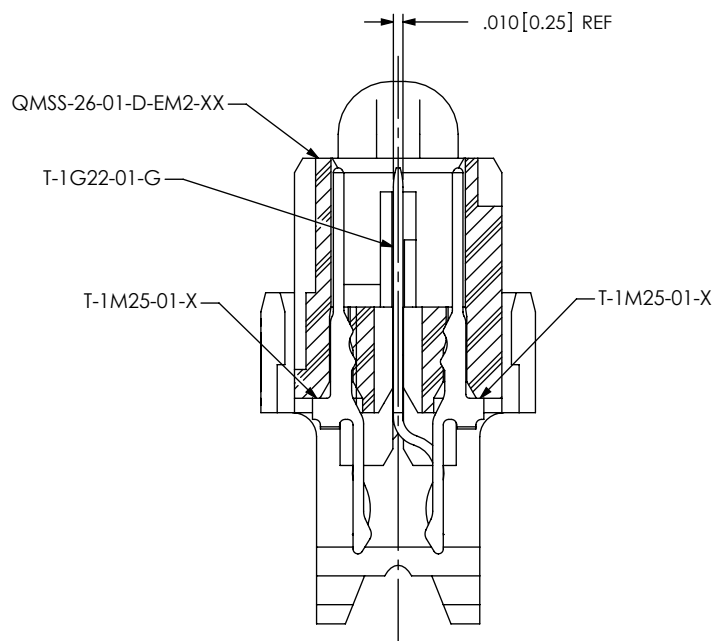
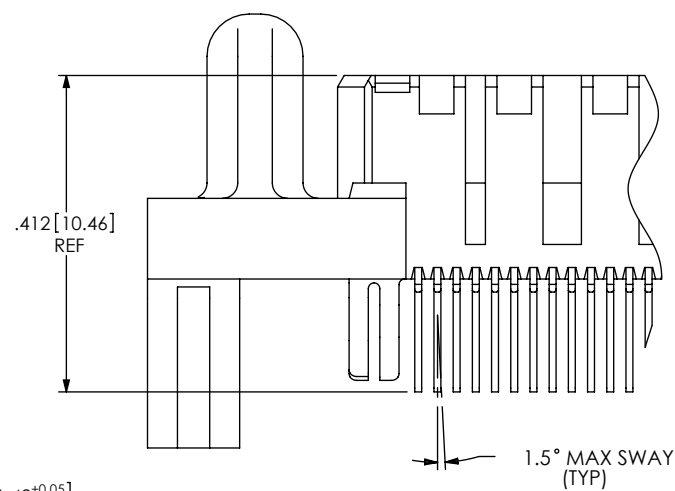
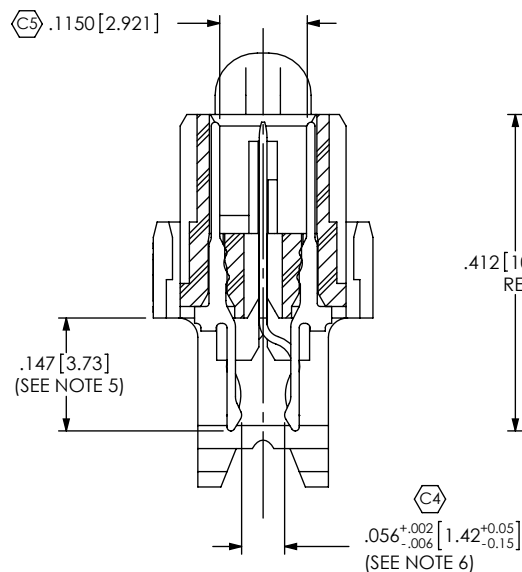
SHEET 1 OF 3

REVISION T

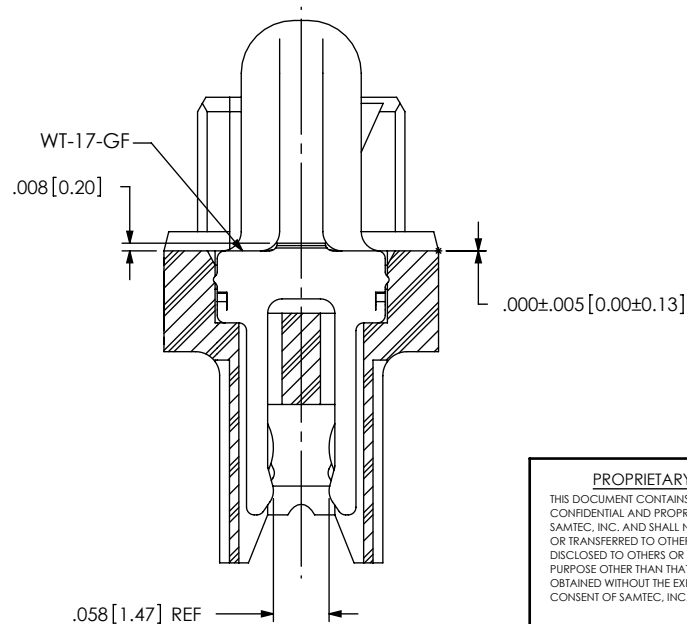
IN-PROCESS 1



IN-PROCESS 2

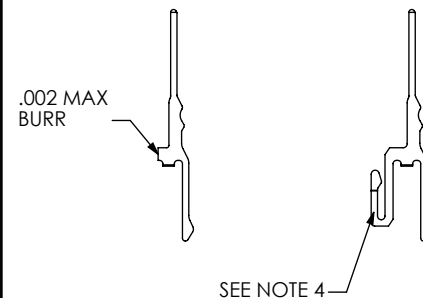


SECTION "A"-"A"
SCALE 5:1



SECTION "B"-"B"
SCALE 5:1

TERMINAL DETAILS



PROPRIETARY NOTE

THIS DOCUMENT CONTAINS INFORMATION
CONFIDENTIAL AND PROPRIETARY TO
SAMTEC, INC. AND SHALL NOT BE REPRODUCED
OR TRANSFERRED TO OTHER DOCUMENTS OR
DISCLOSED TO OTHERS OR USED FOR ANY
PURPOSE OTHER THAN THAT WHICH IT WAS
OBTAINED WITHOUT THE EXPRESSED WRITTEN
CONSENT OF SAMTEC, INC.

DO NOT SCALE DRAWING

SHEET SCALE: 2.5:1

samtec

520 PARK EAST BLVD, NEW ALBANY, IN 47150
PHONE: 812-944-6733 FAX: 812-948-5047
e-Mail info@SAMTEC.com code 55322

DESCRIPTION:
.635mm DOUBLE ROW EDGE MOUNT TERMINAL STRIP

DWG. NO.
QMS-XXX-XX-XX-D-EM2-XXX-XX

BY: E.L.S. 6/18/2003 SHEET 2 OF 3

FIG 2 -PCX OPTION
QMS-052-01-XX-D-EM2-PC4 SHOWN
[DIFFERENT AS SHOWN, OTHERWISE SAME AS FIG 1]

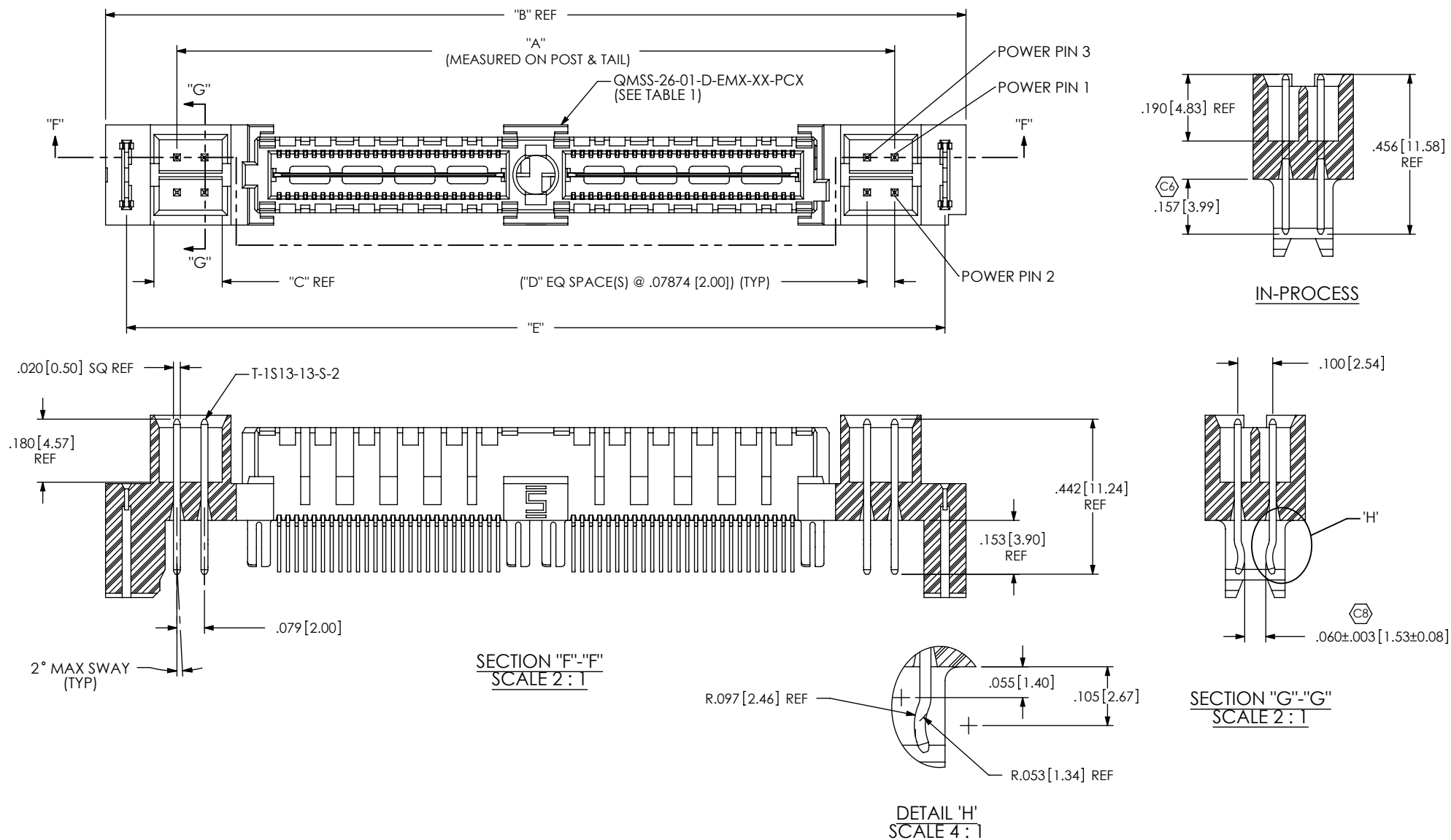


TABLE 1

ASSEMBLY	USE BODY	"A"	"B"	"C"	"D"	"E"
QMS-026-01-X-D-EM2-PC4	QMSS-26-01-D-EM2-01-PC4	1.209 [30.70]	1.616 [41.05]	.180 [4.57]	1	1.496 [38.00]
QMS-026-01-X-D-EM2-PC8	QMSS-26-01-D-EM2-01-PC8	1.524 [38.70]	1.931 [49.05]	.337 [8.57]	3	1.811 [46.00]
QMS-052-01-X-D-EM2-PC4	QMSS-26-01-D-EM2-02-PC4	2.049 [52.04]	2.456 [62.38]	.180 [4.57]	1	2.336 [59.34]
QMS-052-01-X-D-EM2-PC8	QMSS-26-01-D-EM2-02-PC8	2.364 [60.04]	2.771 [70.38]	.337 [8.57]	3	2.651 [67.34]
QMS-078-01-X-D-EM2-PC4	QMSS-26-01-D-EM2-03-PC4	2.889 [73.37]	3.296 [83.72]	.180 [4.57]	1	3.176 [80.67]
QMS-078-01-X-D-EM2-PC8	QMSS-26-01-D-EM2-03-PC8	3.204 [81.37]	3.611 [91.72]	.337 [8.57]	3	3.491 [88.67]

PROPRIETARY NOTE

THIS DOCUMENT CONTAINS INFORMATION CONFIDENTIAL AND PROPRIETARY TO SAMTEC, INC. AND SHALL NOT BE REPRODUCED OR TRANSFERRED TO OTHER DOCUMENTS OR DISCLOSED TO OTHERS OR USED FOR ANY PURPOSE OTHER THAN THAT WHICH IT WAS OBTAINED WITHOUT THE EXPRESSED WRITTEN CONSENT OF SAMTEC, INC.

DO NOT SCALE DRAWING

SHEET SCALE: 5:2

samtec

520 PARK EAST BLVD, NEW ALBANY, IN 47150
PHONE: 812-944-6733 FAX: 812-948-5047
e-Mail: info@SAMTEC.com code 55322

DESCRIPTION:

.635mm DOUBLE ROW EDGE MOUNT TERMINAL STRIP

DWG. NO.

QMS-XXX-XX-XX-D-EM2-XXX-XX

BY: E.L.S.

6/18/2003

SHEET 3 OF 3