

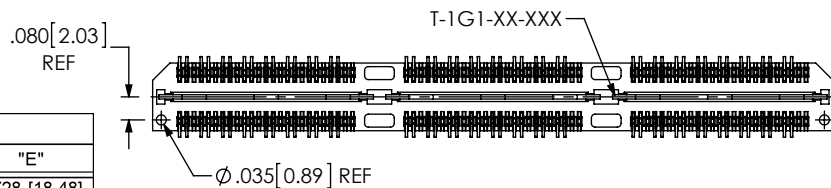
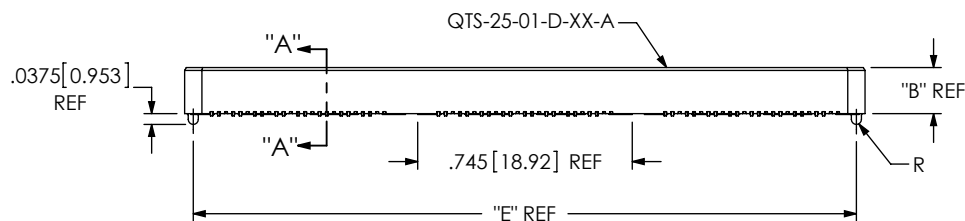
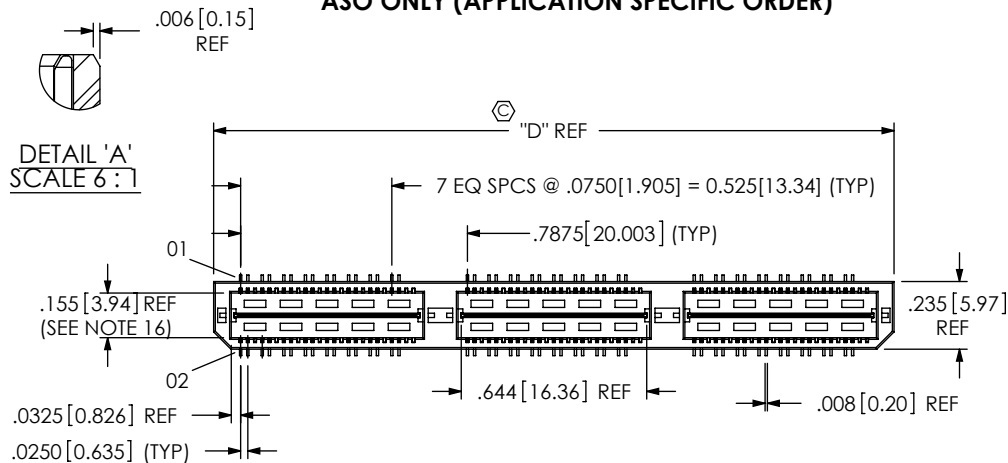
DO NOT
SCALE FROM
THIS PRINT

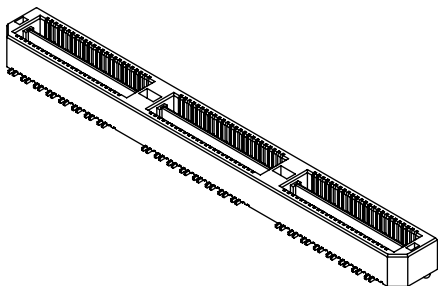
TABLE 6			
No. OF POS	"D"	"E"	
-016	.788 [20.00]	.728 [18.48]	
-032	1.575 [40.01]	1.515 [38.48]	
-048	2.363 [60.01]	2.303 [58.48]	
**-.064	3.150 [80.01]	3.090 [78.49]	
**-.080	3.938 [100.01]	3.878 [98.49]	

** = SEE NOTE 14 & 17

TABLE 1						MATED HEIGHT WITH QSS-01-DP
STYLE	"A"	"B"	BODY	GROUND PLANE	TERMINAL	
-01	.1680	.1600	QTS-25-01-D-XX	T-1G1-01-XXX	T-1S56-01-XXX	.197 [5.00] REF
-02	.2861	.2781	QTS-25-02-D-XX	T-1G1-02-XXX	T-1S56-22-XXX	.315 [8.00] REF

TABLE 2	
No OF POSITIONS	COPLANARITY (INCLUDES GP)
-016 THRU -048	.004 [10]
**-.064 & **-.080	.006 [15]

** = SEE NOTE 14 & 17



No OF POSITIONS
-016, -032, -048,
**-064, **-080
(PER ROW)

**SEE NOTE 14 & 17

LEAD STYLE
-01: .1680 [4.267]
-02: .2861 [7.264]
-03: .4042 [1.123]
-04: .6000 [15.240]
-05: .7180 [18.237]
-06: .8360 [21.234]

PLATING SPECIFICATION

-F: 3µ" FLASH SELECTIVE GOLD, MATTE TIN TAILS
(USE T-1SXX-XX-F & T-1G1-XX-F) (SEE NOTE 11)
-L: 10µ" LIGHT SELECTIVE GOLD, MATTE TIN TAILS
(USE T-1SXX-XX-L & T-1G1-XX-L)
-H: 30µ" HEAVY GOLD, 3µ" GOLD TAILS
(USE T-1SXX-XX-H & T-1G1-XX-G)
-STL: 30µ" HEAVY SELECTIVE GOLD, TIN LEAD TAILS
(USE T-1SXX-XX-STL & T-1G1-XX-STL)
-FTL: 3µ" FLASH SELECTIVE GOLD, TIN LEAD TAILS
(USE T-1SXX-XX-FTL & T-1G1-XX-FTL)

OPTION

-A: ALIGNMENT PINS (SEE FIG 1)
(USE QTS-25-01-D-XX-A)
-LC: LOCKING CLIPS (SEE FIG 2, NOTE 15)
(USE LC-08-TM-01)
-K: POLYIMIDE FILM PAD OPTION
(SEE FIG 3, SHT 2)
(USE K-500-300)
-TR: TAPE & REEL OPTION
(48 POS MAX)

-DP: DIFFERENTIAL PAIRS

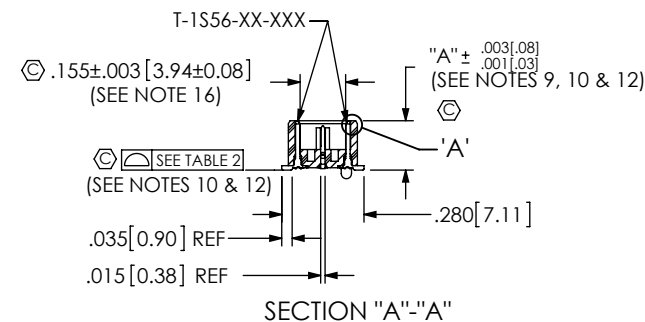
ROW SPECIFICATION

-D: DOUBLE (USE QTS-25-XX-D-XX
& QTS-25-XX-D-XX)

No OF BANKS

☒ = SEE SHEET 3

* = NOT ENGINEERING APPROVED



NOTES:

1. Ⓢ REPRESENTS A CRITICAL DIMENSION.
2. NOTE DELETED.
3. NOTE DELETED.
4. MINIMUM TERMINAL RETENTION: 5 OZ.
5. MINIMUM GROUND PLANE RETENTION: 1 LB.
6. NOTE WAS DELETED.
7. PARTS TO BE MOLDED TO POSITION.
8. NOTE DELETED.
9. MAXIMUM VARIANCE OF .002 [0.05].
10. DIMENSION APPLIES TO TERMINALS AND GROUND PLANES INDEPENDENT OF THE GROUND PLANE OR TERMINAL RESPECTIVELY.
11. -L PLATING CAN BE SUBSTITUTED FOR -F PLATING.
12. GROUND PLANE PRESS HEIGHT MUST BE .003 [0.08] LESS THAN THE MAX HEIGHT OR .001 [0.03] GREATER THAN THE MINIMUM HEIGHT OF THE TERMINALS.
13. LEAD STYLES -03 THRU -06: TOP BODY (QTS) CANNOT HAVE -A OPTION.
14. FOR NEW APPLICATIONS REQUIRING THESE POSITIONS, PLEASE CONTACT SAMTEC INTERCONNECT PROCESSING GROUP.
15. DUE TO THE HIGH AMOUNT OF INSERTION FORCE NEEDED, THE -LC OPTION IS NOT COMPATIBLE WITH AUTO PLACEMENT. SAMTEC RECOMMENDS MANUAL PLACEMENT FOR ALL ASSEMBLIES WITH THE -LC OPTION.
16. MINIMUM ROW TO ROW IS .152. PIN CAN EXTEND PAST WALL .003 MAX.
17. AVAILABLE FOR EXISTING CUSTOMERS ONLY.

UNLESS OTHERWISE SPECIFIED,
DIMENSIONS ARE IN INCHES.
TOLERANCES ARE:
DECIMALS ANGLES
.XX: ± .01 [3]
.XXX: ± .005 [13]
.XXXX: ± .0020 [0.51]

PROPRIETARY NOTE

THIS DOCUMENT CONTAINS INFORMATION
CONFIDENTIAL AND PROPRIETARY TO
SAMTEC, INC. AND SHALL NOT BE REPRODUCED
OR TRANSFERRED TO OTHER DOCUMENTS OR
DISCLOSED TO OTHERS OR USED FOR ANY
PURPOSE OTHER THAN THAT WHICH IT WAS
OBTAINED WITHOUT THE EXPRESSED WRITTEN
CONSENT OF SAMTEC, INC.

samtec

520 PARK EAST BLVD, NEW ALBANY, IN 47150
PHONE: 812-944-6733 FAX: 812-948-5047
e-Mail: info@SAMTEC.com code: 55322

MATERIAL:

DO NOT SCALE DRAWING

SHEET SCALE: 1.5:1

DESCRIPTION:

.635mm DIFFERENTIAL PAIRS HS TERMINAL ASSEMBLY

INSULATOR: LCP, UL94V-0; COLOR: BLACK
TERMINAL & GROUND PLANE: PHOS BRONZE

DWG. NO.

QTS-XXX-XX-XXX-D-DP-XX

BY: KEVIN B

09-14-2010

SHEET 1 OF 3

F:\DWG\MISC\MKTG\QTS-XXX-XX-XXX-D-DP-XX-MKT.SLDDRW

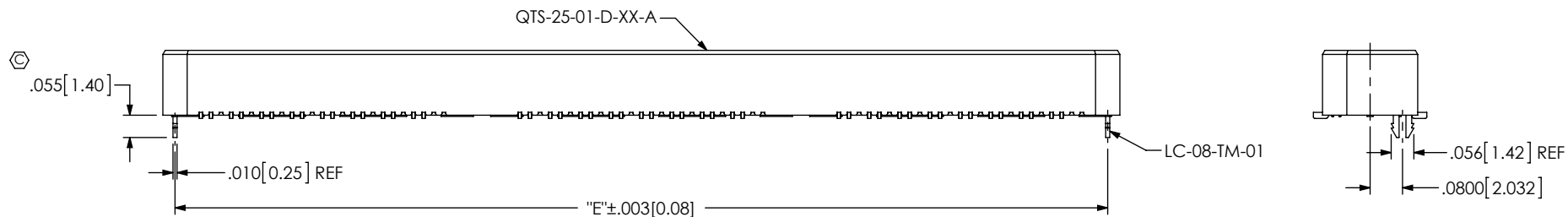


FIG 2
-LC: LOCKING CLIP OPTION
(QTS-048-01-XXX-D-DP-LC SHOWN)
(DIFFERENT AS SHOWN, OTHERWISE SAME AS FIG 1)

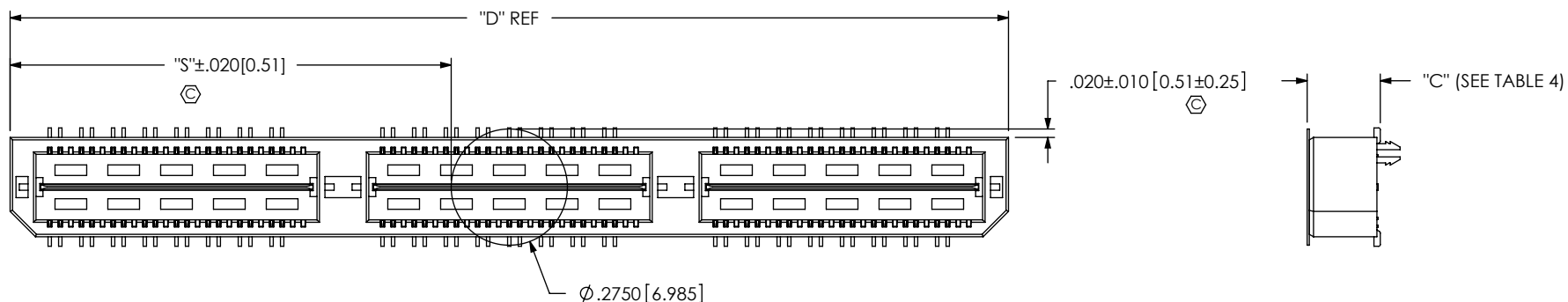


FIG 3
-K: POLYIMIDE FILM PAD
(USE K-DOT-500-300)

TABLE 7	
No OF POS	"S"
-016	.256 [6.50]
-032	.650 [16.51]
-048	1.043 [26.49]
** -064	1.437 [36.50]
** -080	1.831 [46.51]

** = SEE NOTE 14 & 17

TABLE 4	
STYLE	"C"
-01	.173 [4.39]
-02	.291 [7.39]
-03	.409 [10.39]
-04	.605 [15.37]
* -05	.723 [18.36]
* -06	.841 [21.36]

*

*

* =NOT ENGINEERING APPROVED

PROPRIETARY NOTE

THIS DOCUMENT CONTAINS INFORMATION
CONFIDENTIAL AND PROPRIETARY TO
SAMTEC, INC. AND SHALL NOT BE REPRODUCED
OR TRANSFERRED TO OTHER DOCUMENTS OR
DISCLOSED TO OTHERS OR USED FOR ANY
PURPOSE OTHER THAN THAT WHICH IT WAS
OBTAINED WITHOUT THE EXPRESSED WRITTEN
CONSENT OF SAMTEC, INC.

DO NOT SCALE DRAWING

SHEET SCALE: 2.5:1

samtec

520 PARK EAST BLVD, NEW ALBANY, IN 47150
PHONE: 812-944-6733 FAX: 812-948-5047
e-Mail: info@SAMTEC.com code: 55322

DESCRIPTION:
.635mm DIFFERENTIAL PAIRS HS TERMINAL ASSEMBLY

DWG. NO.
QTS-XXX-XX-XXX-D-DP-XX

BY: KEVIN B 09-14-2010 SHEET 2 OF 3

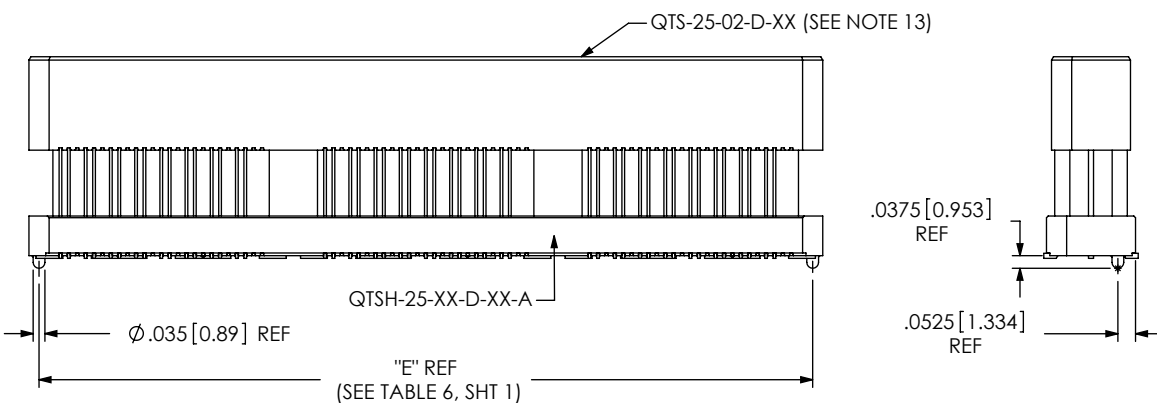
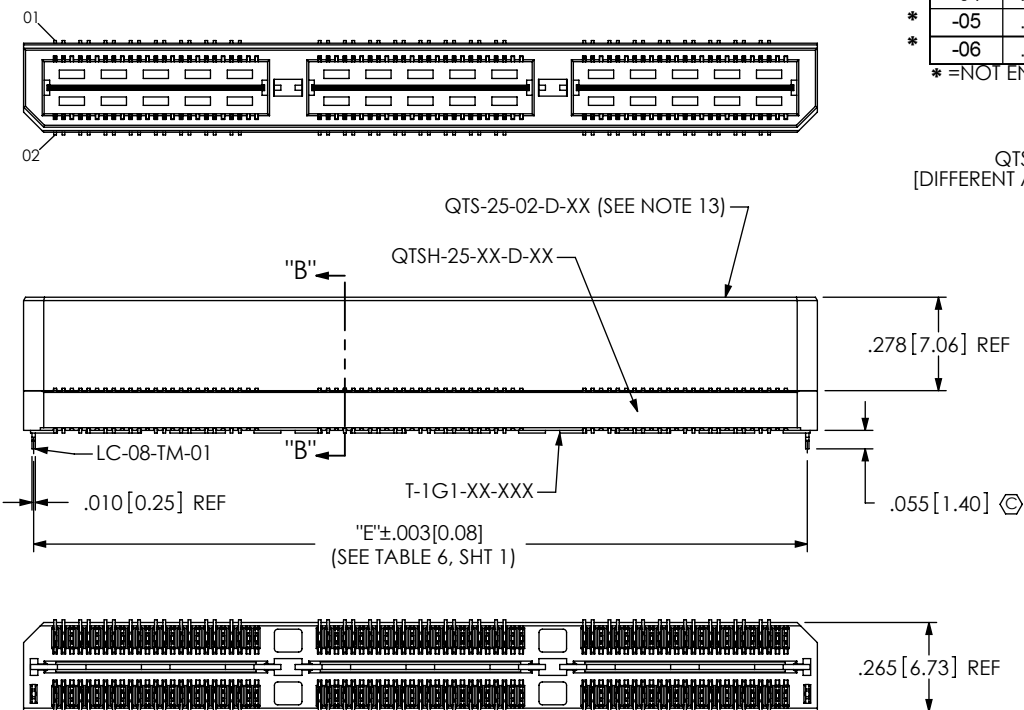


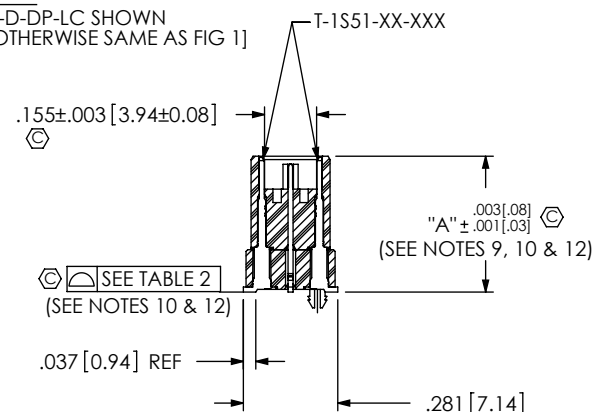
FIG 5
(QTS-048-04-XXX-D-DP-A SHOWN)
(DIFFERENT AS SHOWN, OTHERWISE SAME AS FIG 1)
(STYLE -03, -04, -05 & -06)

F:\DWG\MISC\MKTG\QTS-XXX-XX-XXX-D-DP-XX-MKT.SLDDRW

TABLE 5					MATED HEIGHT WITH QSS-01-DP
STYLE	"A"	GROUND PLANE	TERMINAL	SPACER BODY	
-03	.4042 [10.267]	T-1G1-03-XXX	T-1S51-03-XXX	QTS-25-01-D-XX-X	.433 [11.00] REF
-04	.6000 [15.240]	T-1G1-04-XXX	T-1S51-04-XXX	QTS-25-01-D-XX-X	.630 [16.00] REF
-05	.7180 [18.237]	T-1G1-05-XXX	T-1S51-05-XXX	QTS-25-02-D-XX-X	.748 [19.00] REF
-06	.8360 [21.234]	T-1G1-06-XXX	T-1S51-06-XXX	QTS-25-02-D-XX-X	.866 [22.00] REF

* =NOT ENGINEERING APPROVED

FIG 4
QTS-048-03-XXX-D-DP-LC SHOWN
(DIFFERENT AS SHOWN, OTHERWISE SAME AS FIG 1)



SECTION "B"-"B"

PROPRIETARY NOTE
THIS DOCUMENT CONTAINS INFORMATION
CONFIDENTIAL AND PROPRIETARY TO
SAMTEC, INC. AND SHALL NOT BE REPRODUCED
OR TRANSFERRED TO OTHER DOCUMENTS OR
DISCLOSED TO OTHERS OR USED FOR ANY
PURPOSE OTHER THAN THAT WHICH IT WAS
OBTAINED WITHOUT THE EXPRESSED WRITTEN
CONSENT OF SAMTEC, INC.

DO NOT SCALE DRAWING

SHEET SCALE: 1.75:1

samtec

520 PARK EAST BLVD, NEW ALBANY, IN 47150
PHONE: 812-944-6733 FAX: 812-948-5047
e-Mail: info@SAMTEC.com code: 55322

DESCRIPTION:
.635mm DIFFERENTIAL PAIRS HS TERMINAL ASSEMBLY

DWG. NO.
QTS-XXX-XX-XXX-D-DP-XX

BY: KEVIN B 09-14-2010 SHEET 3 OF 3