

List of "SFW__R-1/2STE5LF" customer document

DOCUMENT NO.	LIST
10100522(SHEET1)	DOCUMENT LIST
10100522(SHEET2)	CAT.NO.TABLE FOR 1mm SPACING SMT CONNECTOR (SFW__R-1/2ST__LF)
10100522(SHEET3)	1mm SPACING SMT CONNECTOR (SFW__R-1ST_LF)
10100522(SHEET4)	1mm SPACING SMT CONNECTOR (SFW__R-2ST_LF)
10100522(SHEET5)	CAT.NO.TABLE FOR PLASTIC TAPE PACKAGED 1mm SPACING SMT CONNECTOR (SFW__R-1/2STE5LF)
10100522(SHEET6)	PLASTIC TAPE PACKAGED 1mm SPACING SMT CONNECTOR (SFW__R-1STE5LF)
10100522(SHEET7)	PLASTIC TAPE PACKAGED 1mm SPACING SMT CONNECTOR (SFW__R-2STE5LF)
10100522(SHEET8)	RECOMMENDED CABLE (FPC) (SFW__R-1/2ST_)
10100522(SHEET9)	RECOMMENDED CABLE (FFC) (SFW__R-1/2ST_)
SC-SFW10	PRODUCT SPECIFICATION
BJM-SFW101	HANDLING PROCEDURES

This document is the property of and embodies CONFIDENTIAL and PROPRIETARY information of FCI. No part of the information shown on this document may be used in any way or disclosed to others without the written consent of FCI.
 Copyright FCI.

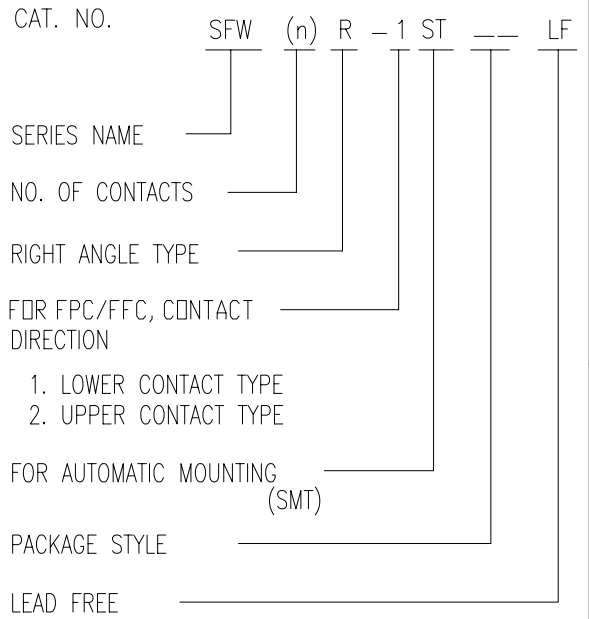


FCIconnect.com

mat'l. code				surface <input checked="" type="checkbox"/> ISO 1302 <input checked="" type="checkbox"/> ISO 406 <input checked="" type="checkbox"/> ISO 1101				tolerance		projection		product family 58RF				CODE JP							
ltr		ecn no		dr		date		tolerances unless otherwise specified				title											
A		S09-0120		DGOH		09-04-17		angles		linear		mm		1mm SPACING SMT CONNECTOR DOCUMENT LIST (Cat. No. : SFW__R-1/2STE5LF)									
								dr		DENNIS GOH		09-04-17		dwg no				sheet 1 of 9		size			
								engr		DENNIS GOH		09-04-17		10100522				A4					
								chr		DENNIS GOH		09-04-17		type				Product Customer Drawing					
								appd		JOEY NG		09-04-17											
sheet index		revision sheet		A 1		A 2		A 3		A 4		A 5		A 6		A 7		A 8		A 9		Rev. A	

CAT. NO. & DIMENSIONS

NO. OF CONTACTS (n)	CAT. NO.	DIMENSIONS (NOTE2)			
		A ± 0.2	B ± 0.2	C ± 0.2	D ± 0.1
4	SFW4R-1/2ST__LF	9.8	8.6	3.0	5.3
5	SFW5R-1/2ST__LF	10.8	9.6	4.0	6.3
6	SFW6R-1/2ST__LF	11.8	10.6	5.0	7.3
7	SFW7R-1/2ST__LF	12.8	11.6	6.0	8.3
8	SFW8R-1/2ST__LF	13.8	12.6	7.0	9.3
9	SFW9R-1/2ST__LF	14.8	13.6	8.0	10.3
10	SFW10R-1/2ST__LF	15.8	14.6	9.0	11.3
11	SFW11R-1/2ST__LF	16.8	15.6	10.0	12.3
12	SFW12R-1/2ST__LF	17.8	16.6	11.0	13.3
13	SFW13R-1/2ST__LF	18.8	17.6	12.0	14.3
14	SFW14R-1/2ST__LF	19.8	18.6	13.0	15.3
15	SFW15R-1/2ST__LF	20.8	19.6	14.0	16.3
16	SFW16R-1/2ST__LF	21.8	20.6	15.0	17.3
17	SFW17R-1/2ST__LF	22.8	21.6	16.0	18.3
18	SFW18R-1/2ST__LF	23.8	22.6	17.0	19.3
19	SFW19R-1/2ST__LF	24.8	23.6	18.0	20.3
20	SFW20R-1/2ST__LF	25.8	24.6	19.0	21.3
21	SFW21R-1/2ST__LF	26.8	25.6	20.0	22.3
22	SFW22R-1/2ST__LF	27.8	26.6	21.0	23.3
23	SFW23R-1/2ST__LF	28.8	27.6	22.0	24.3
24	SFW24R-1/2ST__LF	29.8	28.6	23.0	25.3
25	SFW25R-1/2ST__LF	30.8	29.6	24.0	26.3
26	SFW26R-1/2ST__LF	31.8	30.6	25.0	27.3
27	SFW27R-1/2ST__LF	32.8	31.6	26.0	28.3
28	SFW28R-1/2ST__LF	33.8	32.6	27.0	29.3
29	SFW29R-1/2ST__LF	34.8	33.6	28.0	30.3
30	SFW30R-1/2ST__LF	35.8	34.6	29.0	31.3



NOTES

1. THIS PRODUCT IS THE CONNECTOR USED FOR FPC/FFC AND COPE WITH AUTOMATIC MOUNTING (SMT).
2. SEE PART DRAWINGS FOR DIMENSIONS A~D.

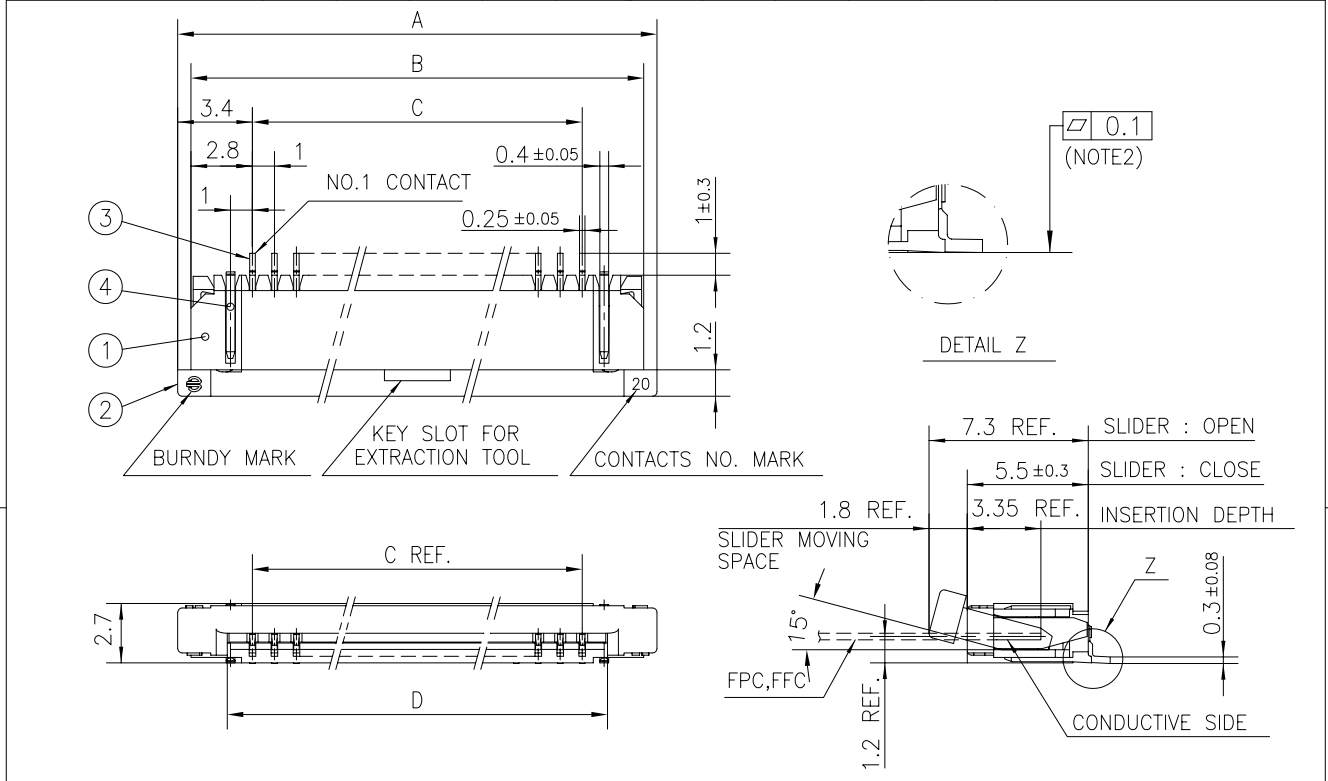
mat'l. code		surface ISO 1302 <input checked="" type="checkbox"/> ISO 406 <input checked="" type="checkbox"/> ISO 1101		tolerance unless otherwise specified		projection		product family 58RF		CODE JP	
ltr	ecn no	dr	date	angles	linear	mm		title CAT. NO. TABLE FOR 1mm SPACING SMT CONNECTOR (Cat. No. SFW__R-1/2ST__LF)			
A						scale \times		dwg no 10100522		sheet 2 of 9 size A4	
				dr	DENNIS GOH	09-04-17		type Product Customer Drawing		Rev. A	
				engr	DENNIS GOH	09-04-17					
				chr	DENNIS GOH	09-04-17					
				appd	JOEY NG	09-04-17					
sheet index	revision sheet										

FCI CONFIDENTIAL



FCIconnect.com

This document is the property of and embodies CONFIDENTIAL and PROPRIETARY information of FCI. No part of the information shown on this document may be used in any way or disclosed to others without the written consent of FCI. Copyright FCI.



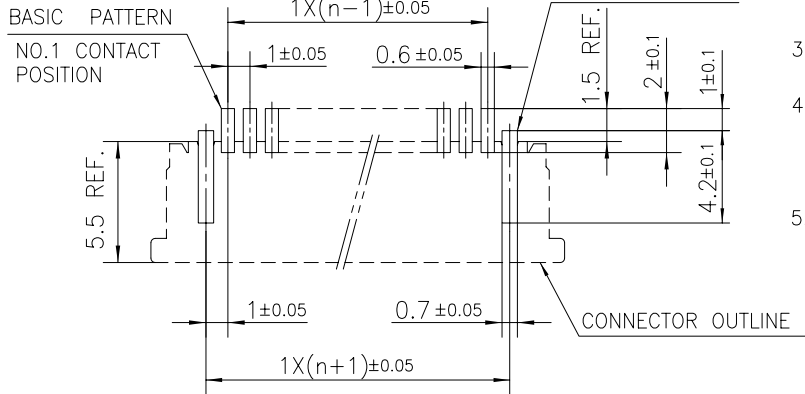
PT. NO.	PARTS NAME	MATERIAL	Q'TY	NOTE
1	HOUSING	PPS RESIN GLASS REINFORCED (UL94V-0)	1	COLOR : BROWN
2	SLIDER	PPS RESIN GLASS REINFORCED (UL94V-0)	1	COLOR : BLACK
3	CONTACT	PHOSPHOR BRONZE	n	PLATING : TIN
4	MOUNTING PLATE	PHOSPHOR BRONZE	2	PLATING : TIN

n : NO. OF CONTACTS

NOTES

1. THIS PRODUCT IS THE CONNECTOR USED FOR FPC/FFC AND COPES WITH AUTOMATIC MOUNTING (SMT).
2. FLATNESS FOR CONTACT TERMINAL HOUSING MUST BE WITHIN TOLERANCE IN Z PORTION DETAILED DRAWING.
3. THIS PRODUCT IS LOWER CONTACT TYPE CONNECTOR.
4. THIS PRODUCT MEETS EUROPEAN UNION DIRECTIVES AND OTHER COUNTRY REGULATIONS AS DESCRIBED IN GS-22-008
5. THE HOUSING WILL WITHSTAND EXPOSURE TO 260°C PEAK TEMPERATURE FOR 10 SECONDS IN A REFLOW SOLDERING OVEN.

RECOMMENDED PC BOARD LAYOUT (COMPONENT SIDE)



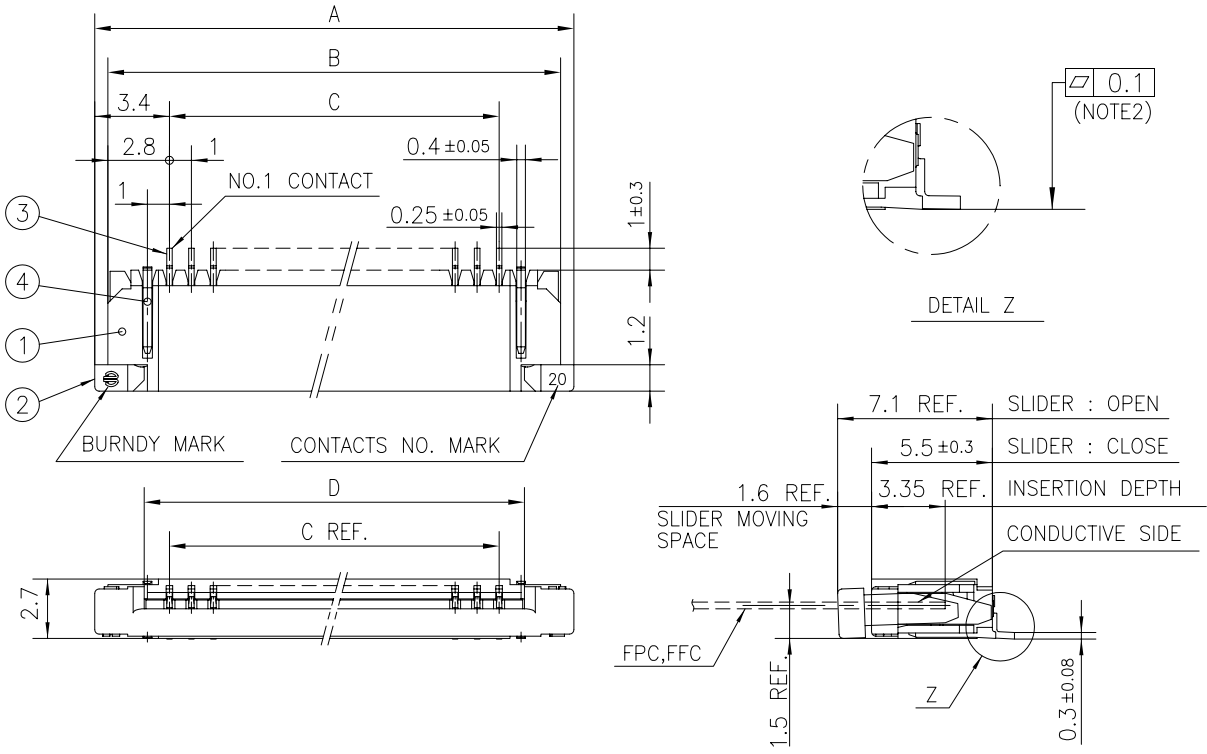
mat'l. code				surface ISO 1302		tolerance ISO 406 ISO 1101		projection		product family 58RF		CODE JP	
ltr				ecn no		dr		date		title			
A										1mm SPACING SMT CONNECTOR (Cat. No. SFW__R-1ST__LF)			
				angles		linear		scale		dwg no		sheet 3 of 9	
				dr		DENNIS GOH		09-04-17		10100522		A4	
				enr		DENNIS GOH		09-04-17		type		Product Customer Drawing	
				chr		DENNIS GOH		09-04-17					
				appd		JOEY NG		09-04-17					
sheet index		revision sheet										Rev. A	

FCI CONFIDENTIAL



This document is the property of and embodies CONFIDENTIAL and PROPRIETARY information of FCI. No part of the information shown on this document may be used in any way or disclosed to others without the written consent of FCI.
Copyright FCI.

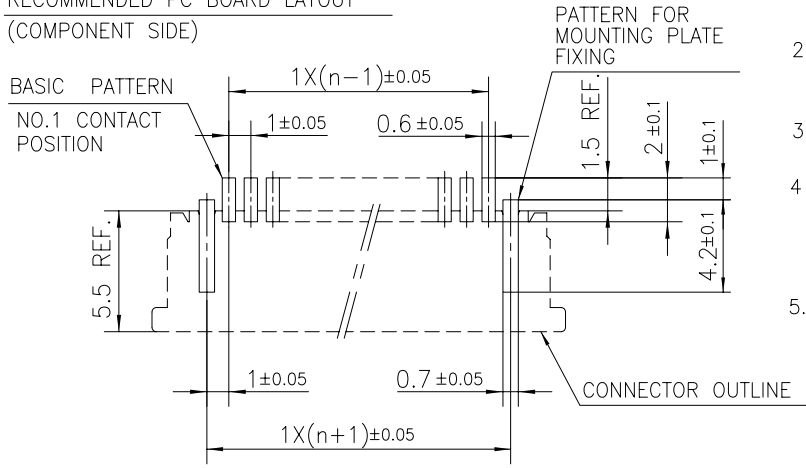
FCIconnect.com



PT. NO.	PARTS NAME	MATERIAL	Q'TY	NOTE
1	HOUSING	PPS RESIN GLASS	1	COLOR : BROWN
2	SLIDER	REINFORCED (UL94V-0)	1	COLOR : BLACK
3	CONTACT	PHOSPHOR BRONZE	n	PLATING : TIN
4	MOUNTING PLATE		2	

n : NO. OF CONTACTS

RECOMMENDED PC BOARD LAYOUT
(COMPONENT SIDE)



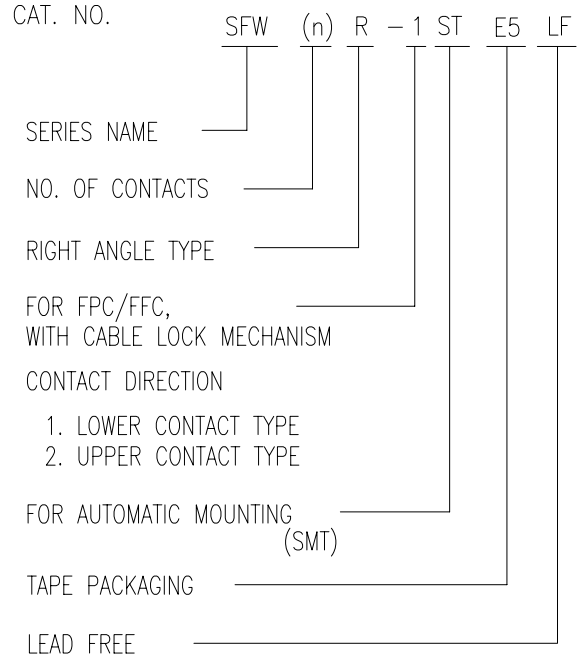
NOTES

1. THIS PRODUCT IS THE CONNECTOR USED FOR FPC/FFC AND COPEs WITH AUTOMATIC MOUNTING (SMT).
2. FLATNESS FOR CONTACT TERMINAL HOUSING MUST BE WITHIN TOLERANCE IN Z PORTION DETAILED DRAWING.
3. THIS PRODUCT IS UPPER CONTACT TYPE CONNECTOR.
4. THIS PRODUCT MEETS EUROPEAN UNION DIRECTIVES AND OTHER COUNTRY REGULATIONS AS DESCRIBED IN GS-22-008
5. THE HOUSING WILL WITHSTAND EXPOSURE TO 260°C PEAK TEMPERATURE FOR 10 SECONDS IN A REFLOW SOLDERING OVEN.

mat'l. code		surface		tolerance		projection		product family		CODE	
		ISO 1302		ISO 406		mm		58RF		JP	
ltr		ecn no		dr		date		title			
A								1mm SPACING SMT CONNECTOR			
								(Cat. No. SFW__R-2ST__LF)			
				dr		DENNIS GOH		09-04-17		sheet 4 of 9	
				enr		DENNIS GOH		09-04-17		size	
				chr		DENNIS GOH		09-04-17		A4	
				appd		JOEY NG		09-04-17		type	
										Product Customer Drawing	
sheet index		revision sheet								Rev. A	

CAT. NO. & DIMENSIONS

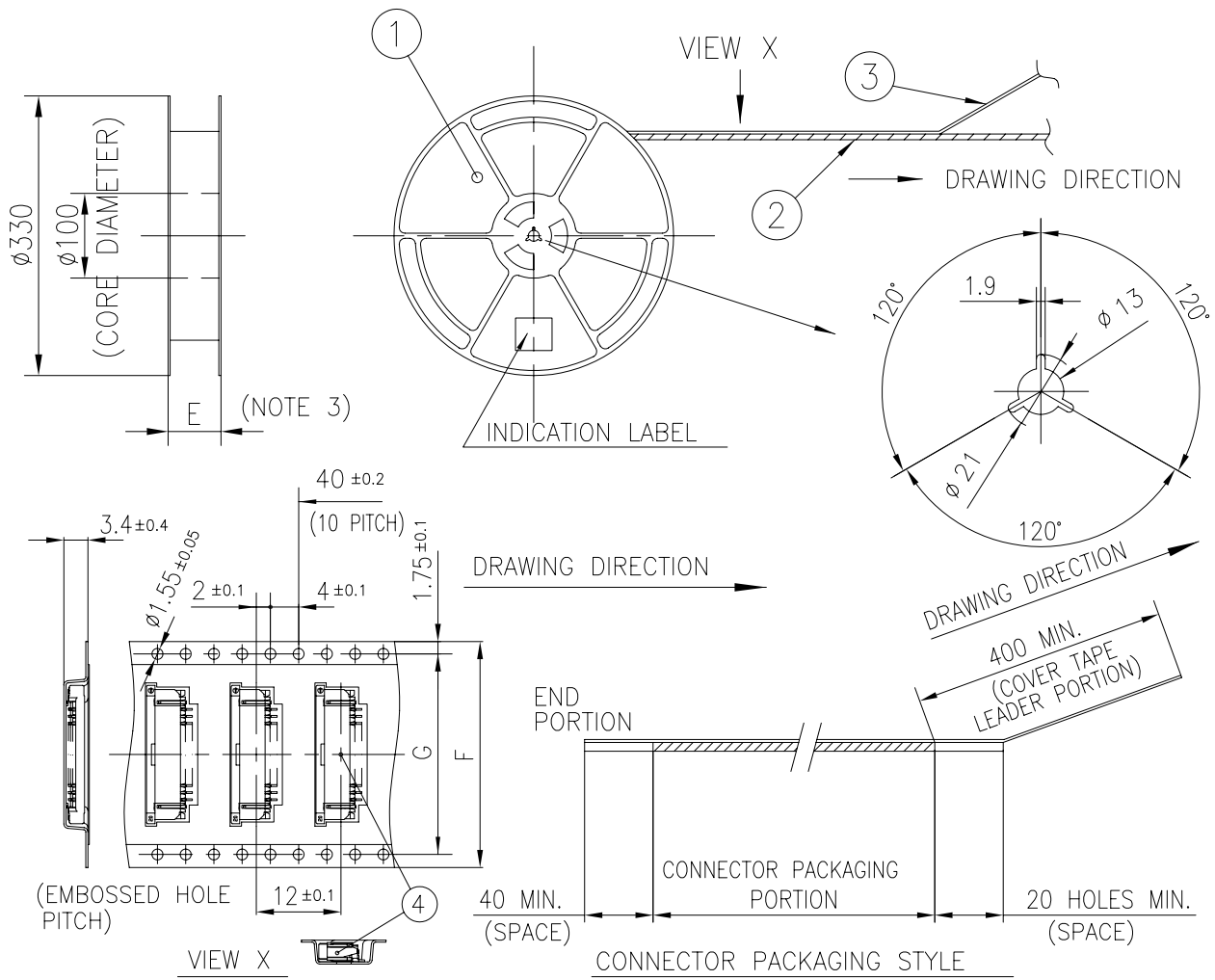
NO. OF CONTACTS (n)	CAT. NO. (NOTE2)	DIMENSIONS (NOTE3)		
		E MAX.	F ± 0.3	G ± 0.1
4	SFW4R-1/2STE5LF	22.4	16	—
5	SFW5R-1/2STE5LF	30.4	24	—
6	SFW6R-1/2STE5LF	30.4	24	—
7	SFW7R-1/2STE5LF	30.4	24	—
8	SFW8R-1/2STE5LF	30.4	24	—
9	SFW9R-1/2STE5LF	30.4	24	—
10	SFW10R-1/2STE5LF	30.4	24	—
11	SFW11R-1/2STE5LF	30.4	24	—
12	SFW12R-1/2STE5LF	30.4	24	—
13	SFW13R-1/2STE5LF	38.4	32	28.4
14	SFW14R-1/2STE5LF	38.4	32	28.4
15	SFW15R-1/2STE5LF	38.4	32	28.4
16	SFW16R-1/2STE5LF	38.4	32	28.4
17	SFW17R-1/2STE5LF	50.4	44	40.4
18	SFW18R-1/2STE5LF	50.4	44	40.4
19	SFW19R-1/2STE5LF	50.4	44	40.4
20	SFW20R-1/2STE5LF	50.4	44	40.4
21	SFW21R-1/2STE5LF	50.4	44	40.4
22	SFW22R-1/2STE5LF	50.4	44	40.4
23	SFW23R-1/2STE5LF	50.4	44	40.4
24	SFW24R-1/2STE5LF	50.4	44	40.4
25	SFW25R-1/2STE5LF	50.4	44	40.4
26	SFW26R-1/2STE5LF	50.4	44	40.4
27	SFW27R-1/2STE5LF	50.4	44	40.4
28	SFW28R-1/2STE5LF	62.4	56	52.4
29	SFW29R-1/2STE5LF	62.4	56	52.4
30	SFW30R-1/2STE5LF	62.4	56	52.4



NOTES

1. THIS PRODUCT IS THE CONNECTOR USED FOR FPC/FFC AND COPER WITH AUTOMATIC MOUNTING (SMT).
2. THIS CATALOG NO. INDICATES PLASTIC TAPE PACKAGED CONNECTOR.
3. SEE PART DRAWINGS FOR DIMENSIONS E~G.

mat'l. code				surface <input checked="" type="checkbox"/> ISO 1302 <input type="checkbox"/> tolerance <input checked="" type="checkbox"/> ISO 406 <input type="checkbox"/> ISO 1101		projection		product family 58RF				CODE JP		
ltr	ecn no	dr	date	tolerances unless otherwise specified				mm		title CAT NO. TABLE FOR PLASTIC TAPE PACKAGED 1mm SPACING SMT CONNECTOR (Cat. No. SFW__R-1/2STE5LF)				
A				angles	linear	scale \times		dwg no 10100522				sheet 5 of 9	size A4	
				dr	DENNIS GOH	09-04-17			type Product Customer Drawing					
				enr	DENNIS GOH	09-04-17								
				chr	DENNIS GOH	09-04-17								
				appd	JOEY NG	09-04-17								
sheet index	revision sheet													Rev. A



PT. NO.	PARTS NAME	CAT. NO.	MATERIAL	Q'TY	NOTE
1	REEL	_____	POLYSTYRENE	1	COLOR : WHITE or BLACK
2	PLASTIC (EMBOSS) TAPE	_____	PET	_____	COLOR : TRANSPARENCY
3	COVER	_____	POLYESTER	_____	COLOR : TRANSPARENCY
4	CONNECTOR	SFW__R-1ST__LF	SEE ATTACHED DWG.	1500	LOWER CONTACT TYPE

NOTES

- THIS IS PLASTIC TAPE PACKAGED CONNECTOR USED FOR FPC/FFC AND COPES WITH AUTOMATIC MOUNTING (SMT).
- SEE JIS C 0806 (PACKING OF ELECTRONIC COMPONENTS ON CONTINUOUS TAPES (SURFACE MOUNTING DEVICES)) FOR SHAPE AND DIMENSIONS OF PLASTIC (EMBOSS) TAPE AND REEL.
- E DIMENSION IS PORTION OF THE CORE.

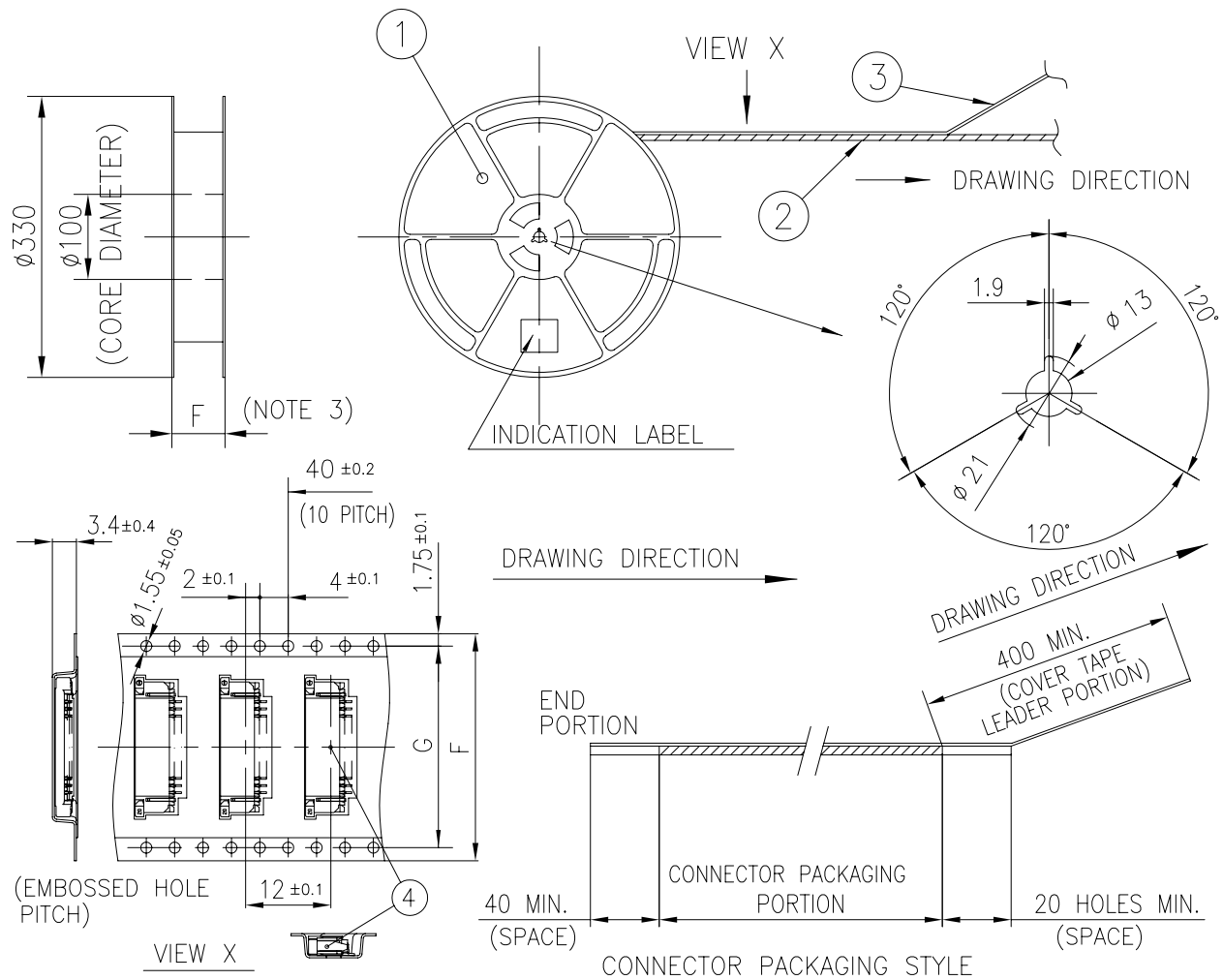
mat'l. code				surface ISO 1302 ✓ tolerances unless otherwise specified		tolerance ISO 406 ISO 1101		projection		product family 58RF		CODE JP	
ltr	ecn no	dr	date	angles linear ±5°		mm		scale		title PLASTIC TAPE PACKAGED 1mm SPACING SMT CONNECTOR (Cat. No. SFW__R-1STE5LF)			
A				±5°		mm		scale		dwg no 10100522		sheet 6 of 9 size A4	
				dr DENNIS GOH 09-04-17		engr DENNIS GOH 09-04-17		chr DENNIS GOH 09-04-17		appd JOEY NG 09-04-17		type Product Customer Drawing	
sheet index		revision sheet										Rev. A	



FCIconnect.com

Copyright FCI.





PT. NO.	PARTS NAME	CAT. NO.	MATERIAL	Q'TY	NOTE
1	REEL	_____	POLYSTYRENE	1	COLOR : WHITE or BLACK
2	PLASTIC (EMBOSS) TAPE	_____	PET	_____	COLOR : TRANSPARENCY
3	COVER	_____	POLYESTER	_____	COLOR : TRANSPARENCY
4	CONNECTOR	SFW__R-2ST__LF	SEE ATTACHED DWG.	1500	UPPER CONTACT TYPE

NOTES

- THIS IS PLASTIC TAPE PACKAGED CONNECTOR USED FOR FPC/FFC AND COPES WITH AUTOMATIC MOUNTING (SMT).
- SEE JIS C 0806 (PACKING OF ELECTRONIC COMPONENTS ON CONTINUOUS TAPES (SURFACE MOUNTING DEVICES)) FOR SHAPE AND DIMENSIONS OF PLASTIC (EMBOSS) TAPE AND REEL.
- E DIMENSION IS PORTION OF THE CORE.

mat'l. code				surface <input checked="" type="checkbox"/> ISO 1302 <input type="checkbox"/> tolerance <input type="checkbox"/> ISO 406 <input type="checkbox"/> ISO 1101		projection		product family 58RF		CODE JP	
ltr	ecn no	dr	date	tolerances unless otherwise specified				title PLASTIC TAPE PACKAGED 1mm SPACING SMT CONNECTOR (Cat. No. SFW__R-2STE5LF)			
A				angles ±5°	linear ±5	mm		dwg no 10100522		sheet 7 of 9 size A4	
				dr DENNIS GOH 09-04-17	enr DENNIS GOH 09-04-17			sheet 7 of 9		size A4	
				chr DENNIS GOH 09-04-17	appd JOEY NG 09-04-17			dwg no 10100522		type Product Customer Drawing	
sheet index	revision sheet										Rev. A



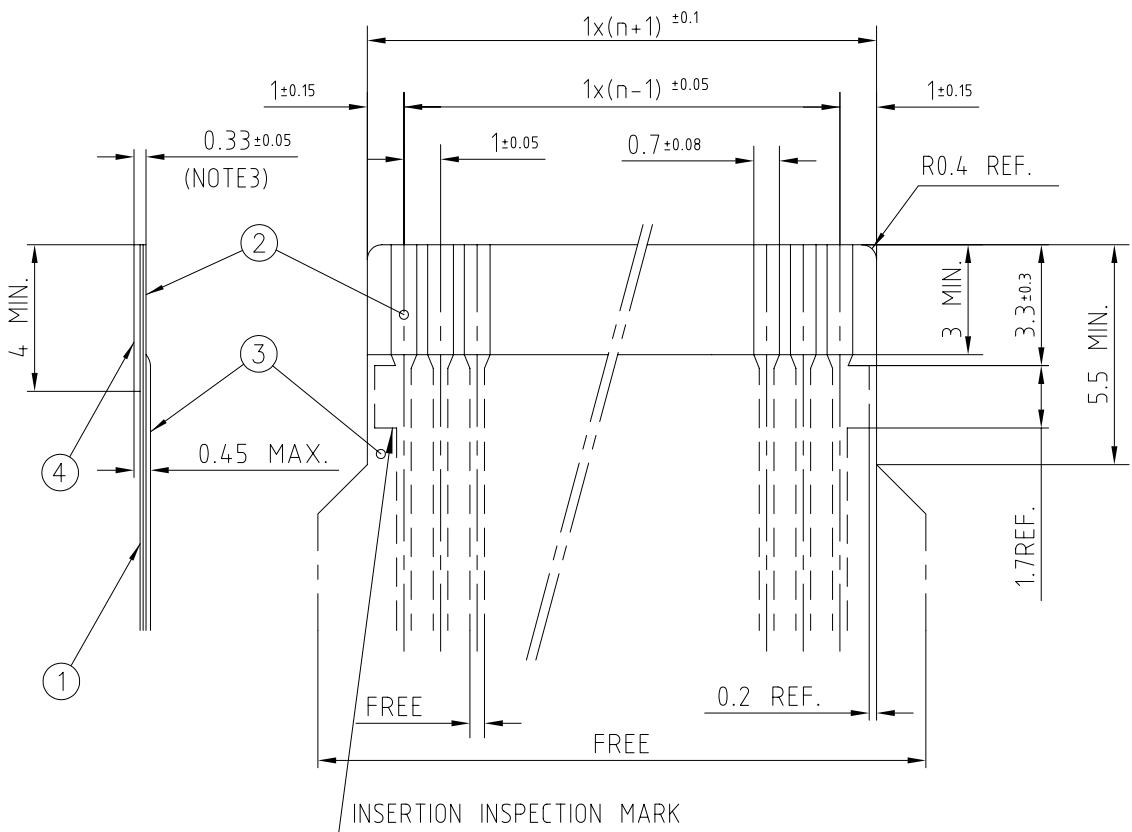
FCIconnect.com

Copyright FCI.



RECOMMENDED CABLE (FPC)

n : NO. OF CONDUCTOR



PT. NO.	PARTS NAME	MATERIAL	THICKNESS (um)
1	BASE FILM	POLYIMIDE OR POLYESTER OR EQUAL	25
2	CONDUCTOR	COPPER FOIL(PLATING:SOLDER 1um MIN.)	35
3	OVERLAY	POLYIMIDE OR POLYESTER OR EQUAL	—
4	SUPPORTING TAPE	POLYESTER OR POLYIMIDE OR EQUAL	188

NOTES

1. NO BURR AT EACH PORTION.
2. NO PEELING IN COMMON USE.
3. TOTAL THICKNESS LIMIT OF EACH MATERIAL (INCLUDING ADHESIVE AGENT) IS SPECIFIED.

mat'l. code		surface ISO 1302		tolerance ISO 406 ISO 1101		projection		product family 58RF		CODE JP	
ltr	ecn no	dr	date	tolerances unless otherwise specified		mm		title			
A				angles	linear	scale X		RECOMMENDED CABLE (Cat. No. SFW__R-1/2__)			
				dr	DENNIS GOH	09-04-17		dwg no		sheet 8 of 9	size
				engr	DENNIS GOH	09-04-17		10100522		A4	
				chr	DENNIS GOH	09-04-17		type Product Customer Drawing			
				appd	JOEY NG	09-04-17					
sheet index	revision sheet										Rev. A

FCI CONFIDENTIAL

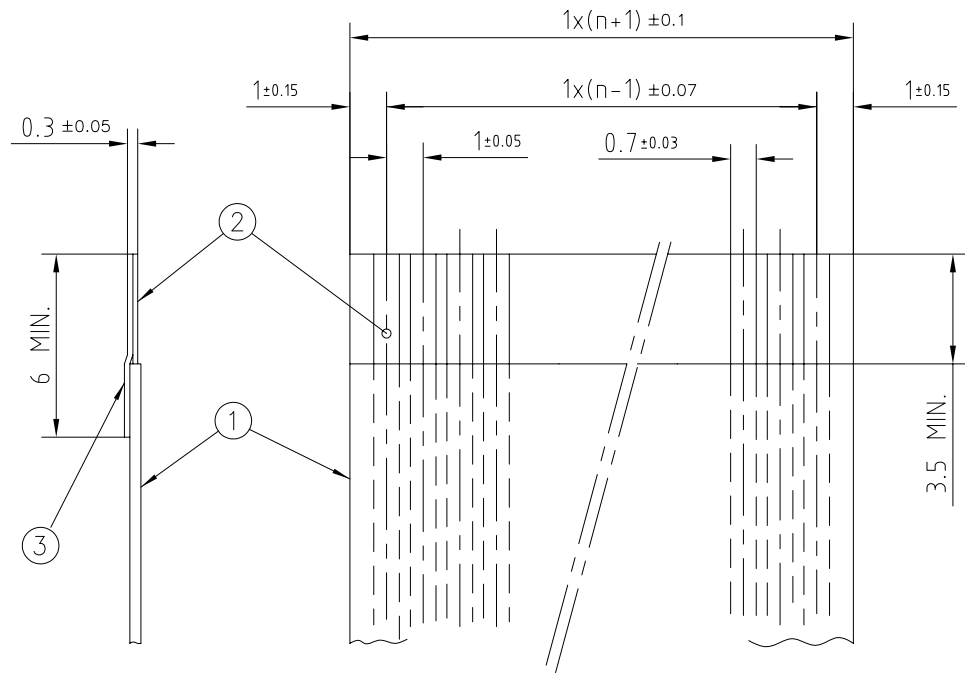


FCIconnect.com

This document is the property of and embodies CONFIDENTIAL and PROPRIETARY information of FCI. No part of the information shown on this document may be used in any way or disclosed to others without the written consent of FCI.
Copyright FCI.

RECOMMENDED CABLE (FFC)

n : NO. OF CONDUCTOR



PT. NO.	PARTS NAME	MATERIAL	NOTE
1	INSULATOR	FLAME RESISTING POLYESTER OR EQUAL	_____
2	CONDUCTOR	COPPER FOIL	PLATING:TIN OR SOLDER 1um MIN.
3	SUPPORTING TAPE	FLAME RESISTING POLYESTER OR EQUAL	_____

NOTES

1. NO BURR AT EACH PORTION.
2. NO PEELING IN COMMON USE.

mat'l. code			surface ISO 1302 ✓ tolerance ISO 406 ISO 1101			projection		product family 58RF			CODE JP	
ltr	ecn no	dr	date			tolerances unless otherwise specified		title		RECOMMENDED CABLE (Cat. No. SFW__R-1/2__)		
A						angles linear		mm				
								scale X				
			dr	DENNIS GOH	09-04-17			dwg no		sheet 9 of 9		size
			engr	DENNIS GOH	09-04-17			10100522				A4
			chr	DENNIS GOH	09-04-17							
			appd	JOEY NG	09-04-17							
sheet index		revision sheet										Rev. A

FCI CONFIDENTIAL



FCIconnect.com

This document is the property of and embodies CONFIDENTIAL and PROPRIETARY information of FCI. No part of the information shown on this document may be used in any way or disclosed to others without the written consent of FCI.
Copyright FCI.