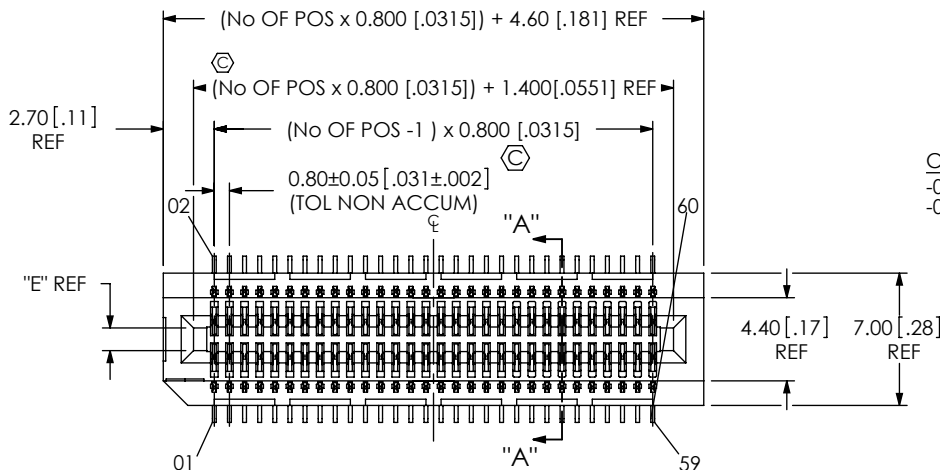


DO NOT
SCALE FROM
THIS PRINT



MEC8-1XX-XX-XX-DV-XX

No OF POSITIONS
-10, -20, -30, -35, -40,
-45, -50, -60, -70

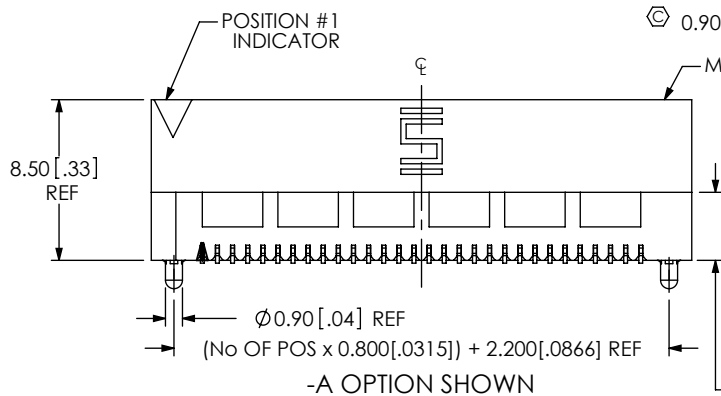
CARD THICKNESS
-01: 1mm [.039] THICK CARD
-02: 1.57mm [.062] THICK CARD

OPTION
-A: ALIGNMENT PINS
(USE MEC8-XX-XX-DV-A)
-LC: LOCKING CLIP (SEE NOTE 5)
(USE LC-05-TM)
-K: POLYAMIDE FILM PAD
(USE K-DOT-.217-.313-.005) (SEE FIG. 3)
-TR: TAPE & REEL

ROW SPECIFICATION
-DV: DUAL VERTICAL
(USE MEC8-XX-XX-DV-XX)

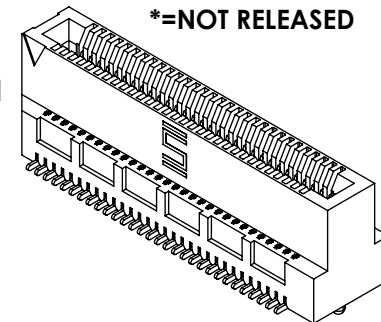
PLATING SPECIFICATION

-L: 10μ" SELECTIVE GOLD, IN CONTACT AREA,
MATTE TIN ON TAIL
-S: 30μ" SELECTIVE GOLD IN CONTACT AREA,
MATTE TIN ON TAIL
-LM: 10μ" SELECTIVE GOLD IN CONTACT AREA,
MATTE TIN ON TAIL
-SM: 30μ" SELECTIVE GOLD IN CONTACT AREA,
MATTE TIN ON TAIL
-C: 50μ" ELECTRO-POLISHED SELECTIVE GOLD,
IN CONTACT AREA, MATTE TIN ON TAIL



*=NOT RELEASED

*=NOT RELEASED



SECTION "A"-"A"

FIG 1
FOR POSITIONS -10, -20, -30 & -35
(SHOWN: MEC8-130-01-XX-DV-XX AS NOTED)

DESIGNED & DIMENSIONED
IN MILLIMETERS
(INCHES FOR REFERENCE ONLY)

TABLE 1	
No OF POS	COPLANARITY
-10 THRU -50	0.102 [.0040]
-60 & -70	0.152 [.0060]

TABLE 4					
CARD	"E"	"F"	"G"	BODY	CONTACT
-01	1.20 [.047]	.50 [.020]	3.400 [.1338]	MEC8-XX-01-DV-XX	C-199-01-XX
-02	1.80 [.071]	1.00 [.039]	4.000 [.1575]	MEC8-XX-02-DV-XX	C-182-02-XX

NOTES:

1. Ⓢ REPRESENTS A CRITICAL DIMENSION.
2. BURR ALLOWANCE: 0.04 [.0015] MAX.
3. MINIMUM PUSHOUT FORCE: .5 LB.
4. ASSEMBLIES TO BE PACKAGED IN TRAYS UNLESS
-TR OPTION IS SPECIFIED.
5. DUE TO THE HIGH AMOUNT OF INSERTION FORCE NEEDED, THE -LC OPTION IS NOT COMPATIBLE WITH
AUTO PLACEMENT. SAMTEC RECOMMENDS MANUAL PLACEMENT FOR ALL ASSEMBLIES WITH
THE -LC OPTION."

-LC OPTION SHOWN

UNLESS OTHERWISE SPECIFIED,
DIMENSIONS ARE IN MILLIMETERS.
TOLERANCES ARE:
DECIMALS ANGLES
X.X: ±0.3 [.01]
X.XX: ±0.13 [.005]
X.XXX: ±0.051 [.0020]

PROPRIETARY NOTE

THIS DOCUMENT CONTAINS INFORMATION
CONFIDENTIAL AND PROPRIETARY TO
SAMTEC, INC. AND SHALL NOT BE REPRODUCED
OR TRANSFERRED TO OTHER DOCUMENTS OR
DISCLOSED TO OTHERS OR USED FOR ANY
PURPOSE OTHER THAN THAT WHICH IT WAS
OBTAINED WITHOUT THE EXPRESSED WRITTEN
CONSENT OF SAMTEC, INC.

samtec

520 PARK EAST BLVD, NEW ALBANY, IN 47150
PHONE: 812-944-6733 FAX: 812-948-5047
e-Mail: info@SAMTEC.com code: 55322

MATERIAL: DO NOT SCALE DRAWING
INSULATOR: LCP
-01: COLOR: NATURAL
-02: COLOR: BLACK
CONTACT: PHOS BRONZE

SHEET SCALE: 1:0.4

DESCRIPTION:
0.8mm DUAL VERTICAL MOUNT MINI-EDGE CARD ASSEMBLY

DWG. NO.
MEC8-1XX-XX-XX-DV-XX

BY: CHAD F 04/09/2002 SHEET 1 OF 2

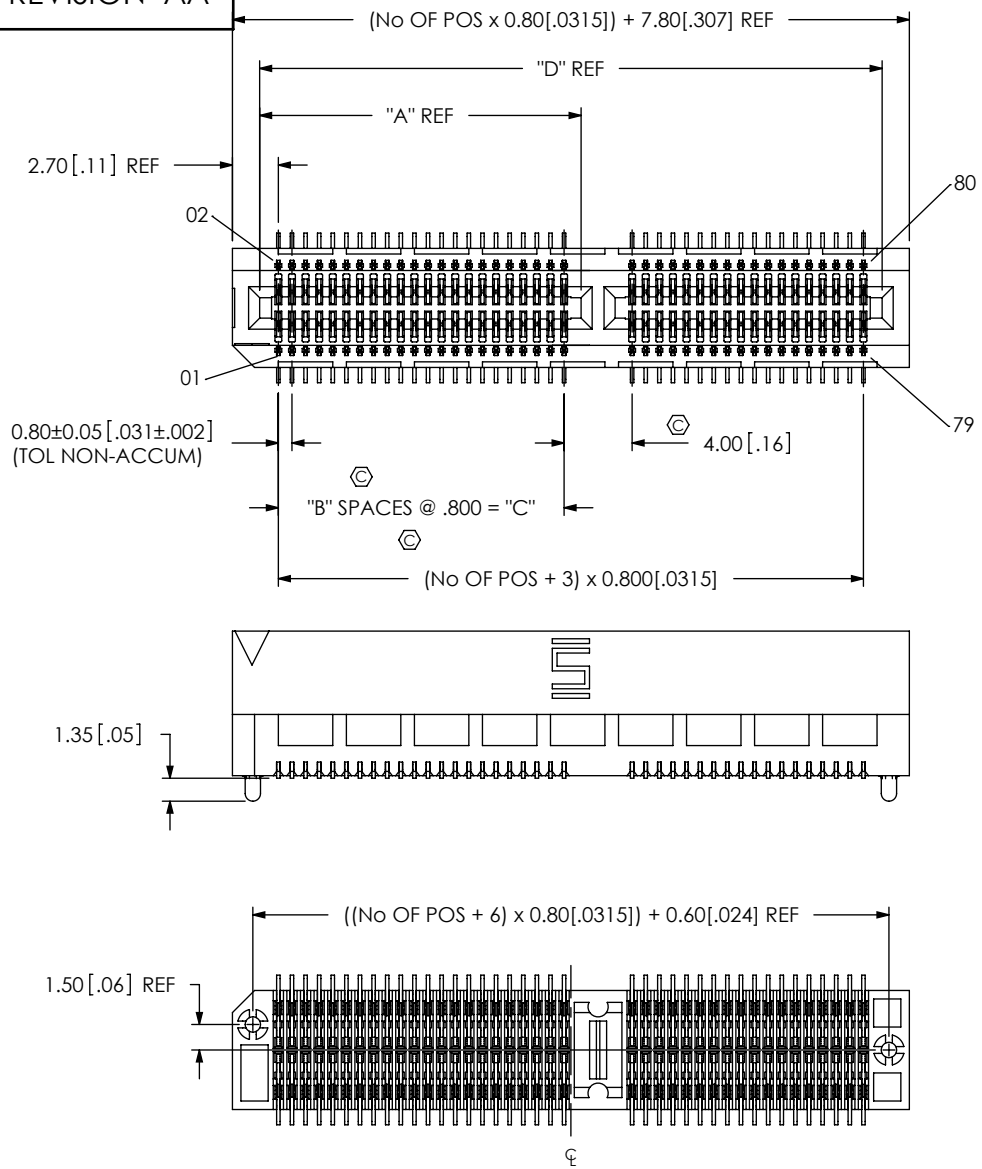


FIG 2
FOR POSITIONS -40 THRU 70
(SAME AS FIG 1, UNLESS OTHERWISE STATED)
(SHOWN: MEC8-140-01-XX-DV-A)

TABLE 2				
No OF POS	"A" REF	"B"	"C"	"D" REF
-40	18.900[.744]	21	16.800[.661]	36.600[1.441]
-45	20.500[.807]	23	18.400[.724]	40.600[1.598]
-50	22.900[.902]	26	20.800[.819]	44.600[1.756]
-60	26.900[1.059]	31	24.800[.976]	52.600[2.071]
-70	30.900[1.217]	36	28.800[1.134]	60.600[2.386]

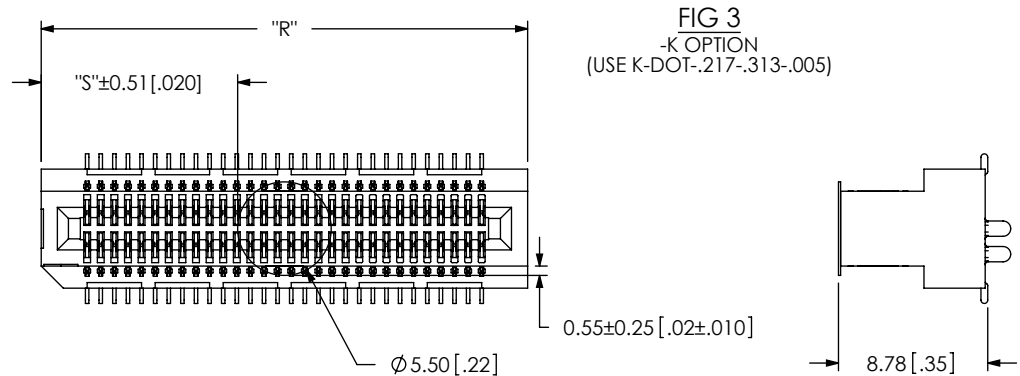



FIG 3
-K OPTION
(USE K-DOT-.217-.313-.005)

TABLE 3		
No OF POS	"R"	"S"
-10 THRU *-35	(No OF POS x 0.80[.0315]) + 4.60[.181] REF	(("R" - 5.50[.217]) / 2) +/-0.51[.020]
-40 THRU -70	(No OF POS x 0.80[.0315]) + 7.80[.307] REF	

* = NOT RELEASED FOR SALE

F:\DWG\MISC\MKTG\MEC8-1XX-XX-XX-DV-XX-MKT.SLDDRW

<p>PROPRIETARY NOTE THIS DOCUMENT CONTAINS INFORMATION CONFIDENTIAL AND PROPRIETARY TO SAMTEC, INC. AND SHALL NOT BE REPRODUCED OR TRANSFERRED TO OTHER DOCUMENTS OR DISCLOSED TO OTHERS OR USED FOR ANY PURPOSE OTHER THAN THAT WHICH IT WAS OBTAINED WITHOUT THE EXPRESSED WRITTEN CONSENT OF SAMTEC, INC.</p> <p>DO NOT SCALE DRAWING</p> <p>SHEET SCALE: 1:0.444444</p>	 <p>520 PARK EAST BLVD, NEW ALBANY, IN 47150 PHONE: 812-944-6733 FAX: 812-948-5047 e-Mail: info@SAMTEC.com code: 55322</p>
	<p>DESCRIPTION: 0.8mm DUAL VERTICAL MOUNT MINI-EDGE CARD ASSEMBLY</p>
	<p>DWG. NO. MEC8-1XX-XX-XX-DV-XX</p>
	BY: CHAD F 04/09/2002