

8C 1BCH
G7 5@9: FC A
H< €D F=BH

E G<!\$*\$!\$%L!8!8D!9A L'G<C K B

Technical drawing of a mechanical assembly, likely a conveyor system component. The drawing shows a side view of a long, rectangular assembly with three internal rollers or guides. Dimensions are indicated by arrows and numbers. Key labels include:

- Top Dimensions:**
 - Overall length: 1000
 - Distance from left end to first roller: 100
 - Distance between rollers: 300
 - Distance from last roller to right end: 100
- Internal Components:**
 - Three rollers/guides are shown, each with a width of 50.
 - Roller spacing is 300.
- Bottom Dimensions:**
 - Overall width: 100
 - Distance from left end to first roller: 100
 - Distance between rollers: 300
 - Distance from last roller to right end: 100
- Labels and Notes:**
 - Top Left:** "(\$(&\$[%\$*+]) F9.
 - Top Center:** "E 'GD5 7 9G'4 "\$) - (%%) \$ \$Q
 - Top Right:** "+, +) [&\$"\$'\$] fHMDL
 - Bottom Left:** "%+) [('\$)] F9.
 - Bottom Center:** "&\$ [%\$' , +)] F9.
 - Bottom Right:** "H % !\$%L
 - Bottom Center:** "5 " (twice)
 - Bottom Left:** "%&\$ [' '\$)] F9.
 - Bottom Center:** "&\$ [%\$' (%) F9.
 - Bottom Right:** "\$\$* [%\$'] F9.
 - Bottom Center:** "&\$ A 5 L 'CK 5 M fHMDL

[illegible]

Bc'C: 'D5#G—
!\$&\$z!\$('\$!*\$ '\$z
! '\$, '\$z!%\$\$
fD9f FCK Ł
' G99BC H9'%
@958 ('
!\$% "%, \$

D5HB: GD97 ÷ 7 5HC B
 !: ∴ 5G< G997HJ 9; C 8ž
 [>] ∴ A 5H97HB H5 @
 ∴ fl G971% & LL! / H% % ! \$% : Ł
 ∴ fG99BC H9 * Ł
 [>] ! @ & < HG997HJ 9; C 8ž
 ∴ A 5H97HB H5 @
 ∴ fl G971% & LL! @ / H% % ! \$% @
 ! < < 95J M; C 8
 ∴ fl G971% & LL! < / H% % ! \$% : Ł

98: 9' A C I B H K - 7 ? B 9 G G
! 9 A & " \$ * (0 " * ' Q Z # \$ \$ ' D 7 6
' f I G 9 E G - ! \$ % 8 ! 9 A & L L / 7 ! % & \$ % L L
! 9 A ' ' f I G 9 E G - ! \$ % 8 ! 9 A ' I L L
..... / 7 ! % & \$ % L L G 9 9 B C H 9 % \$
9: 9 F 9 B H 5 @ D 5 F

FCK 'GD97 ÷ 7 5HC B
!8.8C I 6@9fl G9E G<! ' \$!\$%8!9A L!LLt
Bc'C : '65B?G

```
%: 7 F9DF 909BH5:7 F#7 5@8A 9BGCB"
&:7 C B H57 HF9BHHC B." CNA B"
": F C I B8 D@5B9F9BHHC B.; CNA B"
("D5FHG5F9"A C@H C" DC GHC B"
")A 5 L J 5F-5B79C: "$S&0$) Q
[>*]@D@HB; 75B 69G 6G#H H8: C F I: D@H8 G- B5@D-B"
+"BC H 89@H8"
+"BC H 89@H8"
-"G9k k k k dJa hYVWca #dfcwWmb] #YX[ Ya HSHWU" #bXYI"\ha
": C F B: CFA 5HC B C B DFC 79GB; 98; 9A C I BHD5FHGC
...6C5F8G"
%$:"I9A" :GBCH5:GH5B85F8C: :9F B; /5J5-@6@95G5B5GD C B @M
.....D@5G97 C B H57 H G5A H7 :BH9F 7 C B B97 HDFC 79GB; ; F C I D K #k
.....C F 89F :B E I f -9G"
%G: C F B 9K 5D D@7 5HC B G F 9E I f B; :H: 9G9 DC GHC B G D@95G9 7 C B H57 H
.....G5A H7 :BH9F 7 C B B97 HDFC 79GB; ; F C I D
.....69: C F 989G- B@: B"
```

TABLE 1		
7.		
No OF PAIRS	ASSEMBLY BOW	GND PLANE COPLANARITY
-020 THRU -060	.004 [.10]	.004 [.10]
-080 THRU -100	.005[1.27]	.005[1.27]

```
HC @F5B7 9G 5F9.  
897 A 5G.....5B; @G  
"LL. ± "$% Q ..... &  
"LLL. ± "$$ 0% Q  
"LLLL. ± "$$&$0$ %Q
```

H: 68C71A 9B H7CBH6BG:B: CFA 5HC B
7CB: 89BH6@5B8 DFCDF 96FMHC
GSA H7Z:B7*5B8 G:5@BCH69F9DC8I 79B
CF H5BG 9F98 H: 6:9F 8C71A 9B H6CF
8:67@C G98 HC'CH:9FGCF I G98: CF 5BM
DI FDC G9CH:9F H:5B H:5HK <7< :HK 5G
C 6H5:B98 K H:CI H:9K DFC9G98 K F H9B
7CB G98HC: GSA H7Z:B7*

BG 5HCF: @DZ7C@CF:657?
7CBH57H/: FCI B8'D5B9'D<C G6FCBN9

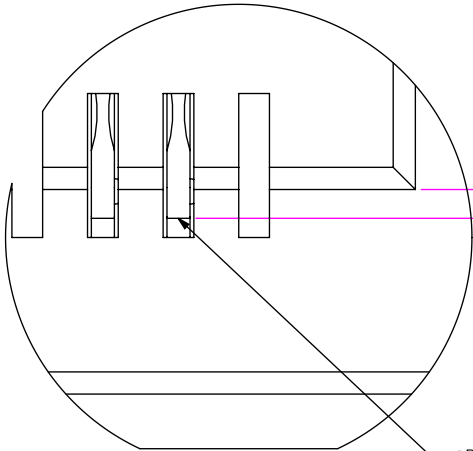


)&\$D5F?`95GH6@ 8zB9K`5@5BMzB`(+)\$
D<C B9,`%&-((!*+': 5L.,`%&-(, !)\$(+
Y!A U].`bZ: 4 G5A H97`WcaWcXY.)`&&

a 98; 9A C I B H 8 9: 9F 9B H 5 @ D 5 # < # < G D 998 G C 7 ? 9 H 5 G 9 A 6 4 M


E G<!LLL!\$%L!8!8D!9A L

6M	8 95 B`D)# %&\$\$\$	G<99H%`C: &
----	----------	-------------	-------------



@B9'K <9F9FC I B898 'HC D'C: '7 C B H5 7 H
HF5BGHC BGHC GF5 ÷ <H695A

89H5 @fif
G75@9&\$'. %

<p>DFC.DF-9H5FMBC H9</p> <p>H-68C71A 98H7C B16BG B- CFA 5HC B</p> <p>7CB- 898H6@5B8 DFC DF 4H5FMHC</p> <p>GSA H97Z47*5B8 G-5000BC H69F90FC 81798</p> <p>CF HF5BG 9FF98 HC CH-9F 8C71A 98H6CF</p> <p>847 @G98 HC CH-9FGCF I G98 : CF 5BM</p> <p>DI FDC G9CH-9F H-5B H-5HK <7 < HK 5G</p> <p>C6H5B98 K H-C I HH-99LDF 9G98 K F-H98</p> <p>7CBG98HC : GSA H97Z47*</p>	 <p>)&\$D5F? '95GH6@ 8ZB9K '5@5BMZ-B'(+)% \$</p> <p>D<C B9', %&L-((!'+''''''''': 5L', %&L-(-,!)\$(+)</p> <p>YIA UJ]. j&4 GSA H97 Wc a ''''''''''WcXY..))' &&</p>
<p>8C 'BCH G7 5@9 8F5K -B;</p>	<p>89G7 F-0HC B.</p> <p>7a a '98: 9A C I BH8 ÷: 9F 9BH6 @D5 F'<÷ <GD998 GC 7?9H5 G9A 60M</p>
<p>G<99HG7 5@9 (. %</p>	<p>8K : "'BC"</p> <p>E G<!LLL!\$%L!8!8D!9A L</p>
	<p>6M 895B 'D)# %&\$\$\$ G<99H &'C: &</p>