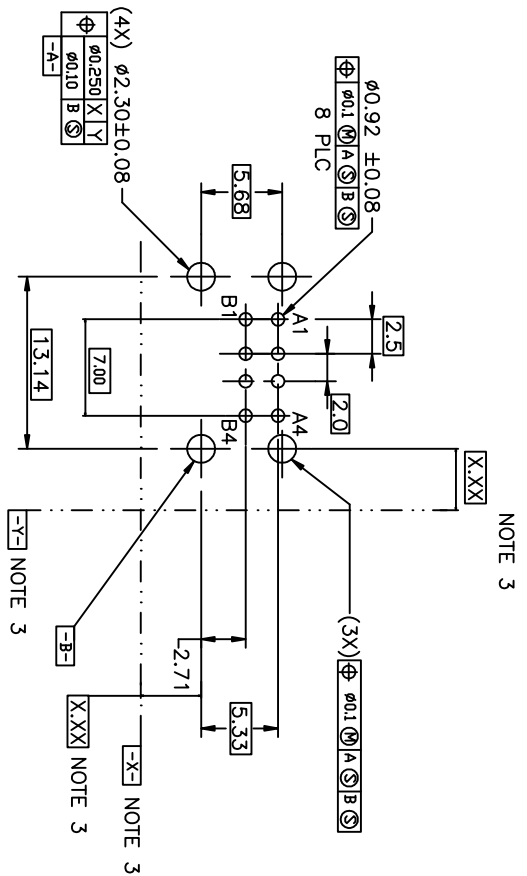
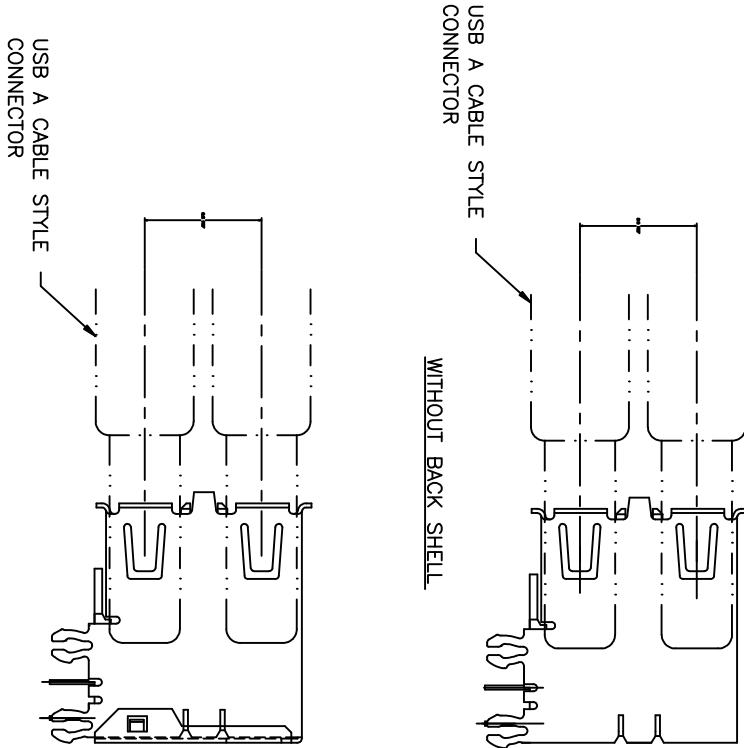


form no. 7530-001-103

1 | 2



RECOMMENDED PC DIMENSIONS

NOTES:

1. MATERIAL:
CONTACTS-COPPER ALLOY
SHELL-COPPER ALLOY
HOUSING-UL 94-V-0 RATED THERMOPLASTIC.

2. PLATING:

CONTACTS-0.76um MINIMUM GLOD FLASH OVER PALLADIUM
NICKEL IN CONTACT AREA OR 0.76um MIN GOLD FLASH
3.8um MINIMUM TIN-LEAD ON SOLDER TAILS
ALL OVER 1.27um MINIMUM NICKEL.
SHELL, 5um MINIMUM BRIGHT TIN
OVER 2.5um MINIMUM NICKEL.

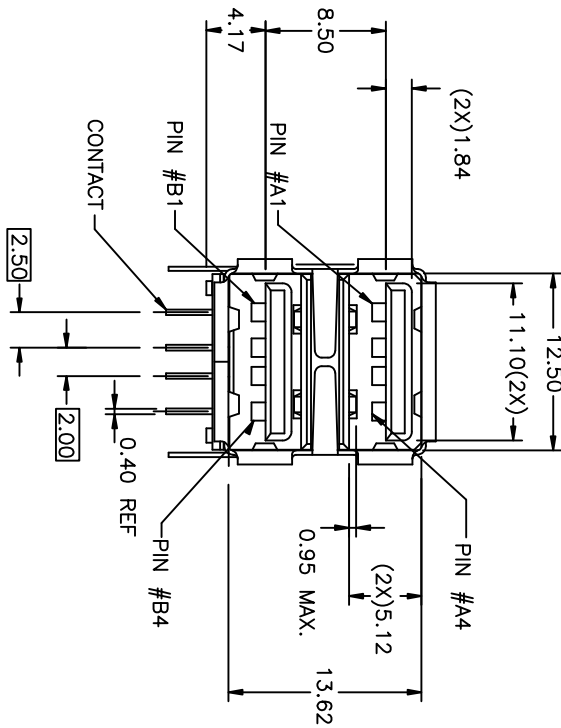
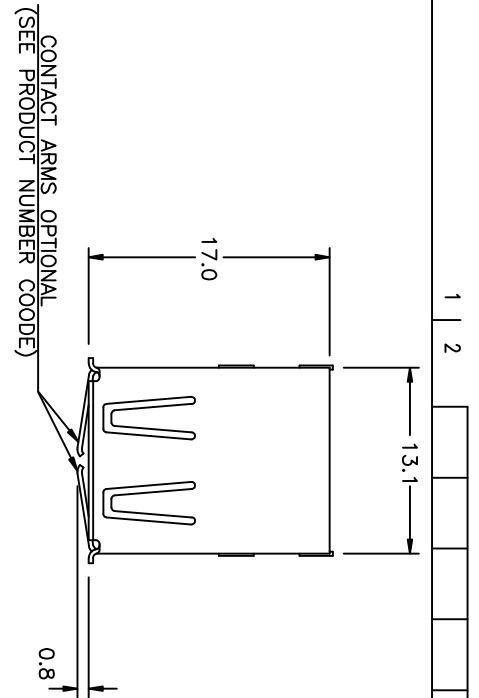
3. DATUM AND BASIC DIMENSIONS ESTABLISHED BY CUSTOMER.

4. RECOMMENDED PC BOARD THICKNESS OF 1.57mm.

5. P/N SEE PRODUCT NUMBER CODE.
(TO BE CONTINUED)

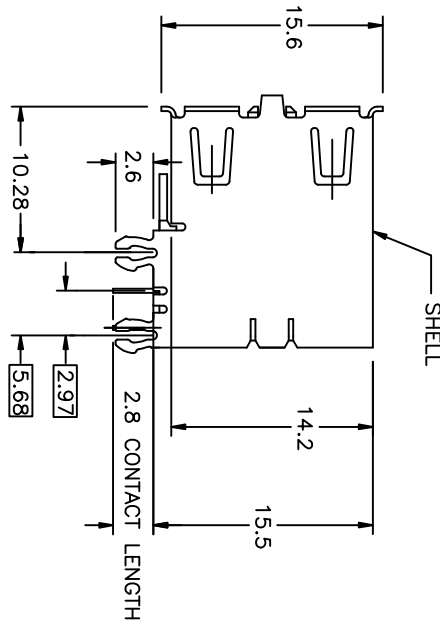
mat'l. code	NOTE 1 & 2	tolerances unless otherwise specified	CUSTOMER COPY	FCI	UNIV. SERIAL BUS DOUBLE DECK RECEPTACLE	code
ltr	ecn no	dr	date	line art	projection	title
AC	N05-0086	PH	03/09/05	.XX ±.30	1:1	UNIV. SERIAL BUS
AD	N05-0106	PH	04/13/05	.XX ±.20	2:1	DOUBLE DECK RECEPTACLE
AE	N06-0101	HB	04/13/06	0° ±.3°	1:1	UNIV. SERIAL BUS
AF	N06-0133	HB	05/17/06	0° ±.3°	1:1	UNIV. SERIAL BUS
AA	T04-0206	WL	05/13/04	engr	mm	product family
AB	N04-0086	PH	11/09/04	R Y LUU	12/10/97	size dwg no
sheet	revision	AF	AA	Y	AE	code
index	sheet	1	2	3	4	code

code code
22526



ASSEMBLY WITHOUT BACK SHIELD
72309-XX3XX SHOWN

- (CONTINUED)
6. FOR LEAD FREE P/N, A LEAD FREE LABEL WILL APPEAR AT PACKING.
 7. FOR LEAD FREE P/N, THE HOUSING WILL WITHSTAND EXPOSURE TO 260°C PEAK TEMPERATURE FOR 40 SECONDS IN A CONVECTION, INFRARED OR VAPOR PHASE REFLUX OVEN.
 8. FOR LEAD FREE P/N, THE PRODUCT MEET EUROPEAN UNION DIRECTIVES AND OTHER COUNTRY REGULATION AS DESCRIBED IN GS-22-008



mat'l. code			tolerances unless otherwise specified			CUSTOMER COPY			FCI		
ltr	ecr	no	dr	date	linear	projection	title	www.fciconnect.com	UNIV. SERIAL BUS	DOUBLE DECK RECEPTACLE	code
AA					.XX ±.20	mm	size dwg no		72309		sheet 2 of 4
					angles 0° ±.5°		product family		USB		
					dr PETER PM	12/10/97					
					engr R Y LU	12/10/97					
					chr R Y LU	12/10/97					
					appd JENN TSAO	12/10/97					
sheet index	revision	sheet									



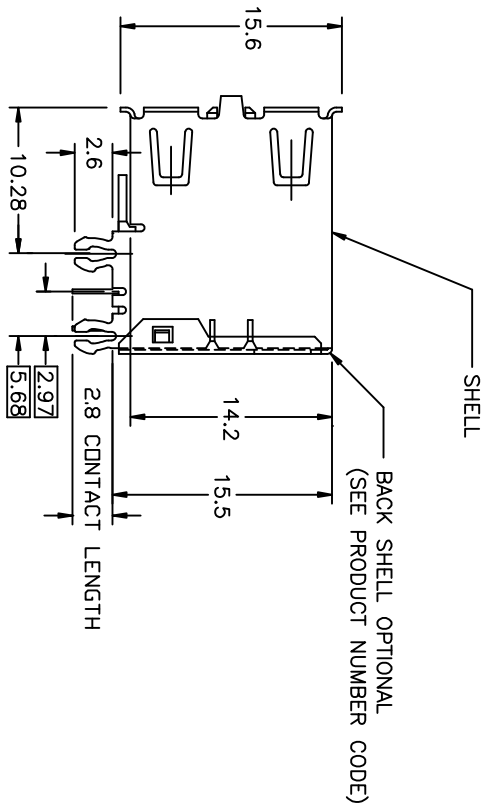
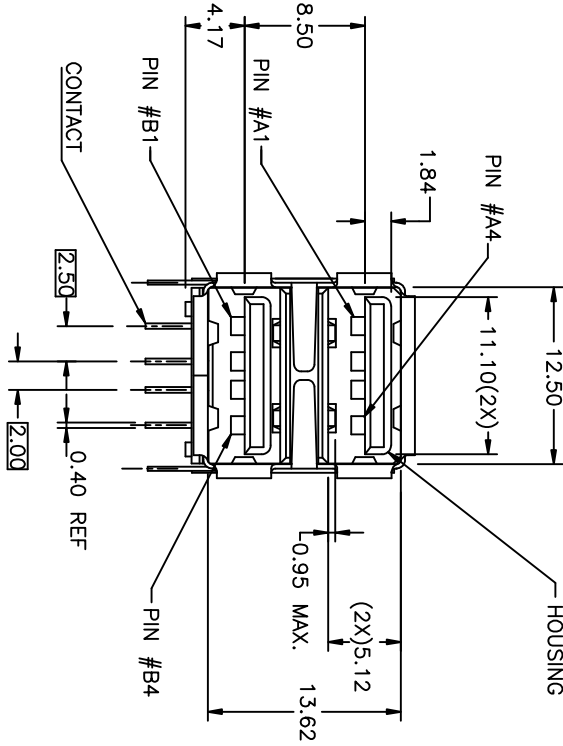
B

A

form no. 7530-001-103

1 | 2

ASSEMBLY WITH BACK SHIELD
 72309 - XX4XX SHOWN



1 | 2

3 |

4





mat'l. code	ecr no	dr	date	tolerances unless otherwise specified	CUSTOMER COPY	FCI	www.fci.com
Y				.XX ±.30	projection	UNIV. SERIAL BUS	
				.XXX ±.10	2.8 CONTACT LENGTH	DOUBLE DECK RECEPTACLE	
				angles 0° ±.5°	mm	product family	code
				dr PETER PMM 12/01/97	size	dwg no	code
				engr R Y LIU 12/10/97	scale	72309	sheet
				chr R Y LIU 12/10/97	2 : 1	A4	3 of
				appd JENN TSAO 12/10/97			
sheet index	revision	sheet					

code 22526

4

B

4

mat'l. code		NOTE 1 & 2		tolerances unless otherwise specified		CUSTOMER COPY		 www.fciconnect.com	
ltr	ecn no	dr	date			projection		title	
AE				linear				UNIV. SERIAL BUS	
				angles				DOUBLE DECK RECEPTACLE	
						 mm		product family USB	
				engr J. DAVID		5/10/96		code	
				chr J.DAVID		6/29/96		—	
				pppl J.DAVID		6/29/96		sheet	
				scale 2:1		A4		4 of	
sheet	revision								
in day	in day								

72309-010X/80134MF	72309-010X/20134MF
72309-012X/80134MF	72309-2012X/20134MF
72309-0020X/80244MF	72309-2020X/20244MF
72309-0022X/80244MF	72309-2022X/20234MF
72309-0030X/80344MF	
72309-0032X/80334MF	72309-2030X/20344MF
72309-0040X/80434MF	72309-2032X/20334MF
72309-0042X/80434MF	72309-2040X/20444MF
72309-0100X/70144MF	72309-2042X/20434MF
72309-0102X/70144MF	72309-3010X/30144MF
72309-0102X/70234MF	72309-3012X/30134MF
72309-1022X/70234MF	72309-3020X/30244MF
72309-1022X/70234MF	72309-3022X/30234MF
72309-1030X/70344MF	
72309-1032X/70334MF	72309-3030X/30344MF
72309-1040X/70444MF	72309-3032X/30334MF
72309-1042X/70434MF	72309-3040X/30444MF
72309-0110X/81144MF	72309-3042X/30434MF
72309-0112X/81134MF	72309-4040X/40144MF
72309-0120X/81144MF	72309-4042X/40134MF
72309-0122X/81144MF	
72309-0130X/81344MF	72309-5040X/50144MF
72309-0132X/81334MF	72309-5042X/50134MF
72309-0140X/81444MF	
72309-0142X/81434MF	
72309-1100X/71144MF	
72309-1102X/71134MF	
72309-1120X/71244MF	
72309-1122X/71234MF	
72309-1130X/71344MF	
72309-1132X/71334MF	
72309-1140X/71444MF	
72309-1142X/71434MF	